

THIS DRAWING IS UNPUBLISHED. RELEASED FOR PUBLICATION

© COPYRIGHT 20 BY TYCO ELECTRONICS CORPORATION. ALL RIGHTS RESERVED.

PART NUMBER	REV	TERMINATOR	FEED TYPE	DESCRIPTION
2114127-1	C	LEADMAKER	MECH POST FEED	CUTS CARRIER
2114127-2	C	BENCH	MECH PRE FEED	CUTS CARRIER
2114127-6	C	LEADMAKER	MECH POST FEED	CONTINUOUS CARRIER
7-2114127-1	C	LEADMAKER	MECH POST FEED	-1 AND SPARE PARTS
7-2114127-2	C	BENCH	MECH PRE FEED	-2 AND SPARE PARTS
7-2114127-6	C	LEADMAKER	MECH POST FEED	-6 AND SPARE PARTS
7-2114127-7	B	-	-	SPARE PARTS KIT

CRIMP DATA TE TERMINAL TE CRIMP SPECS

TERMINAL NAME: 2.5mm SIGNAL DBL LOCK CONT

CRIMP	SIZE	TYPE	RANGE
WIRE	1.16 [.046 IN]	F	26-22 AWG
INSUL	1.70 [.067 IN]	F	Ø.93 - 1.50 [.037-.059 IN]

WIRE STRIP LENGTH 2.20-2.80 [.087-.110 IN] APPL INSTRUCTIONS 408-8322

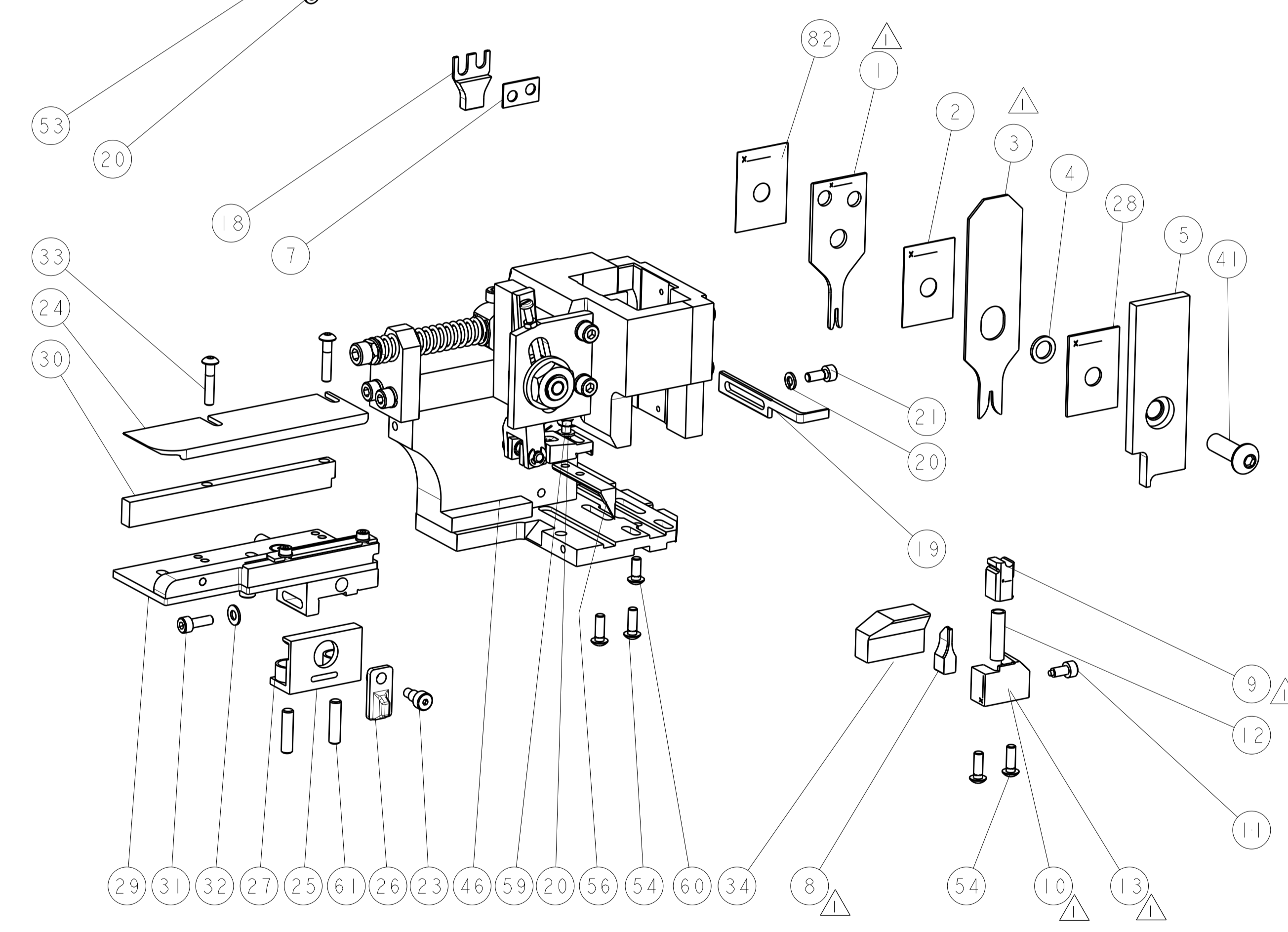
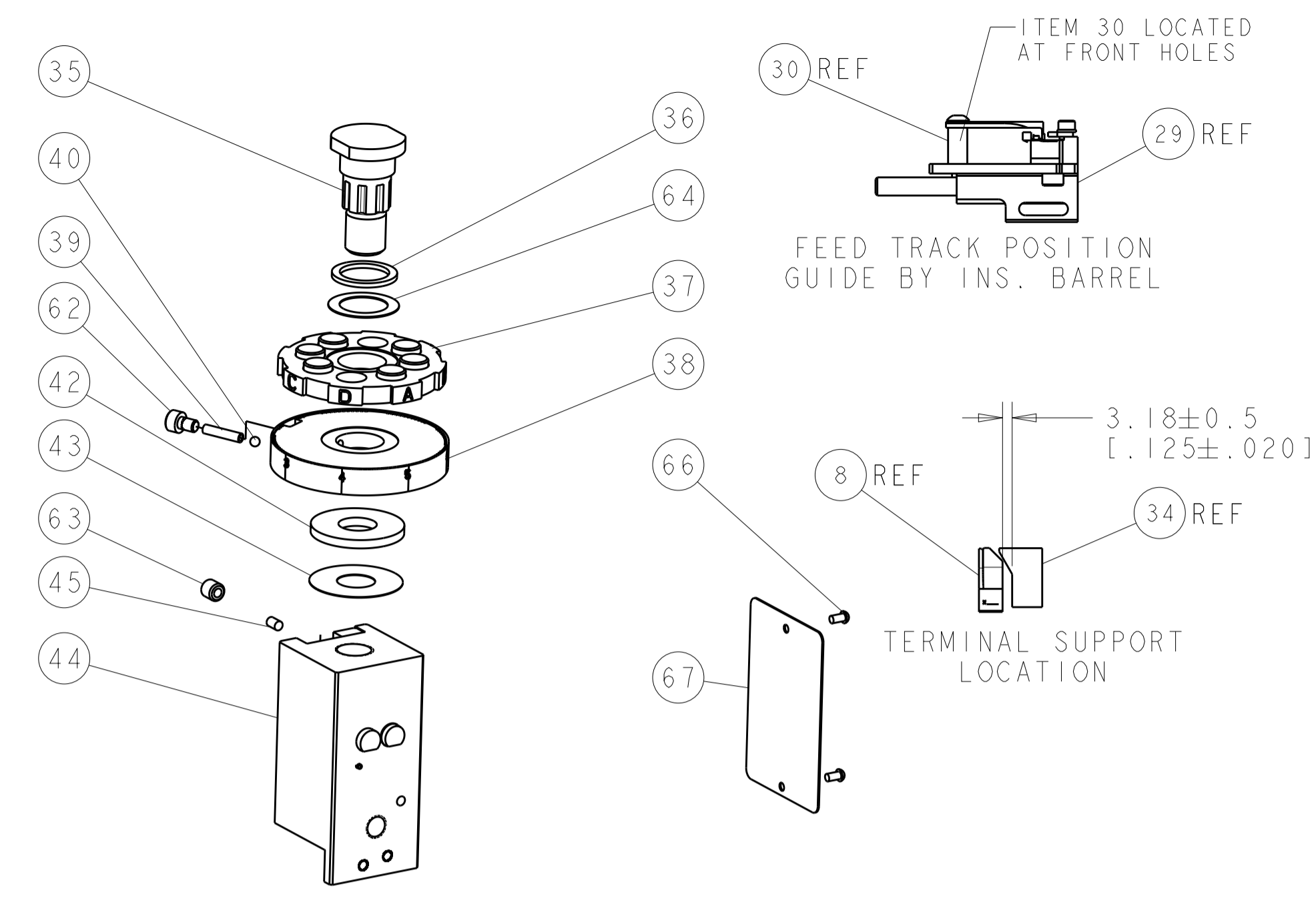
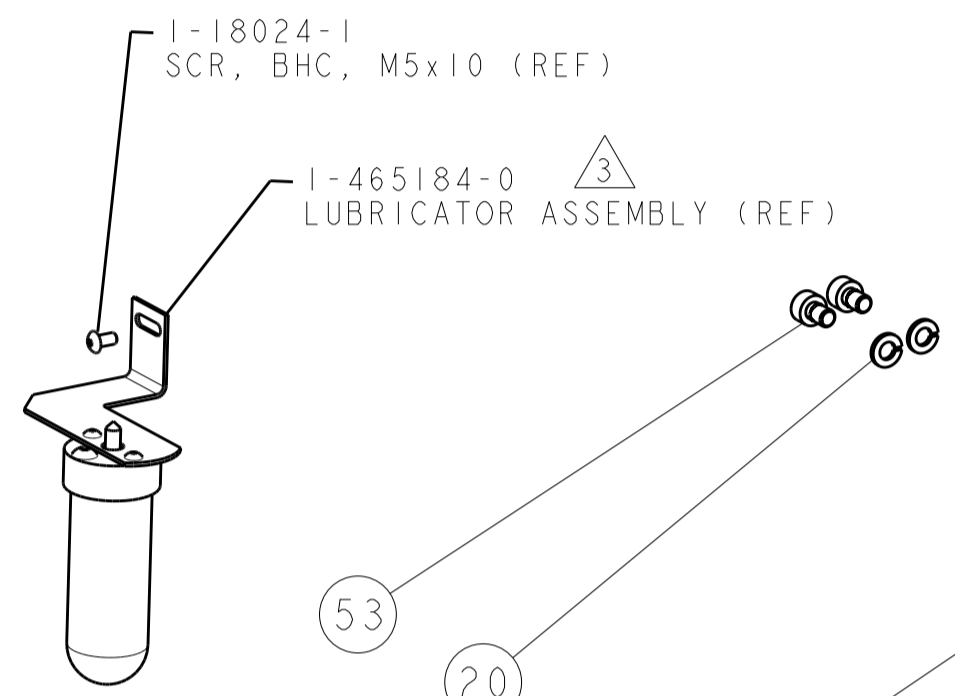
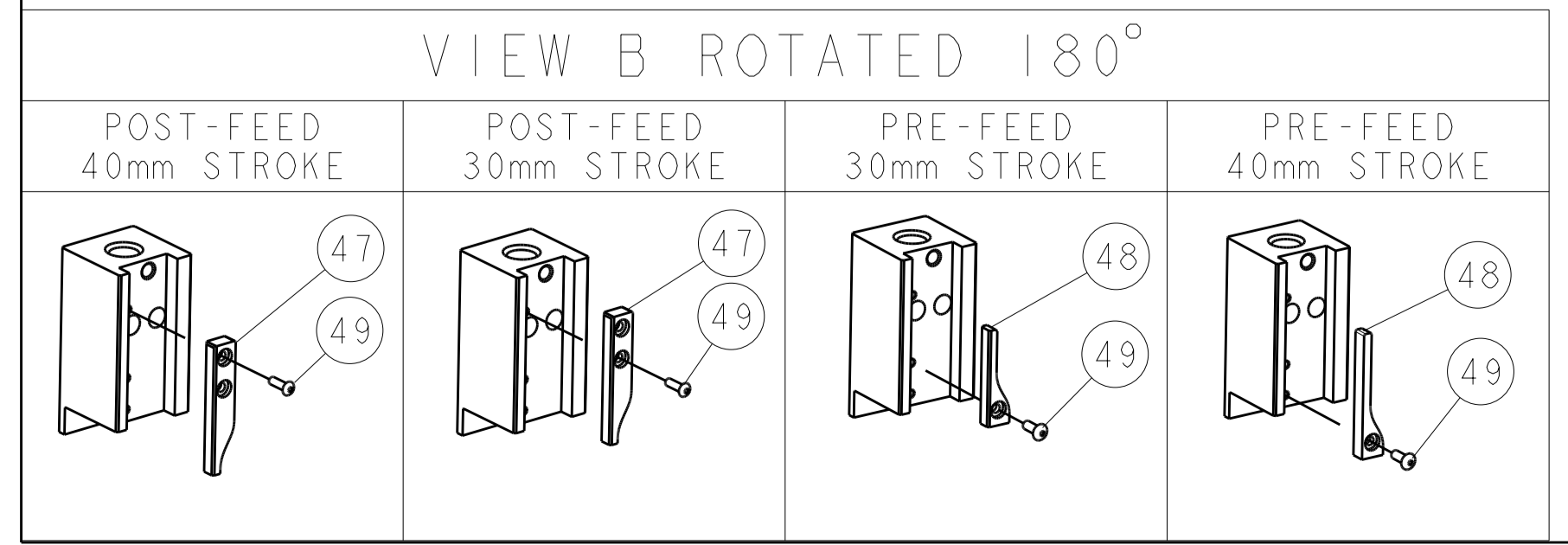
TERMINAL APPL SPEC	114-5203	FEED
		8.20 [.323 IN]

TERMINALS APPLIED

RECEPT.	TAB		
917684-1	917765-1	-	-
917684-2	917765-2	-	-
5-917684-1	-	-	-

WIRE SIZE	CRIMP HEIGHT	PIN PN & LENGTH [IN]
0.34mm ² or 22AWG	.82 ±0.05 [.032 ±.002 IN]	4-354779-6 [.3220]
0.22mm ² or 24AWG	.75 ±0.05 [.030 ±.002 IN]	5-354779-1 [.3245]
0.14mm ² or 26AWG	.69 ±0.05 [.027 ±.002 IN]	5-354779-6 [.3270]

- △ RECOMMENDED SPARE PARTS.
- 2. GREASE RAM, CAM, CAM FOLLOWER AND FEED ROD LIGHTLY.
- △ CERTAIN TERMINALS REQUIRE LUBRICATION. REFER TO THE APPLICATOR INSTRUCTION SHEET FOR MORE INFORMATION.
- 4. LUBRICATE DAILY PER THE APPLICATOR INSTRUCTION SHEET SUPPLIED WITH THE APPLICATOR.



SET UP GAGE 458637-3

LOC	DIST	REV	DATE	APPV
A	66	C	07MAY2015	MR GB

QTY	REV	DESCRIPTION	DATE	APPV
-	1	455888-3	SPACER, CRIMPER	82
-	1	1338705-1	DOCUMENTATION PACKAGE	71
-	1	461264-1	PLATE, IDENTIFICATION	67
-	2	21017-2	SCREW, DRIVE	66
-	1	986950-1	WASHER, FLAT PRECISION	64
-	1	3-18031-0	SCR, SET, CUP POINT M6 X 6.0	63
-	1	18023-9	SCR, SKT HD CAP M4 X 6.0	62
-	2	2-18032-5	SCR, SET, FLT POINT M5 X 20.0	61
-	1	18024-7	SCR, BTN SKT HD CAP (M4 X 10.0)	60
-	1	5-18022-2	SCR, HEX HD CAP M4 X 8.0	59
-	1	1338685-1	PAWL, FEED	56
-	4	18024-8	SCR, BTN SKT HD CAP (M4 X 12.0)	54
-	2	18023-9	SCR, SKT HD CAP M4 X 6.0	53
-	1	18024-3	SCR, BTN SKT HD CAP (M3 X 10.0)	49
-	-	1338675-1	CAM, UNIVERSAL PRE FEED	48
-	1	1338676-1	CAM, UNIVERSAL POST-FEED	47
-	1	1320999-3	APPLICATOR SUBASSEMBLY, HDI	46
-	1	690191-1	PLUG, NYLON	45
-	1	1633724-1	RAM, (SIDE FEED)	44
-	1	690125-1	SHIM SUB-ASSY	43
-	1	690124-1	WASHER, RAM (.115)	42
-	1	2-18024-6	SCR, BTN SKT HD CAP (M8 X 25.0)	41
-	1	23241-1	BALL, STEEL	40
-	1	2-22278-7	SPRING, COMPRESSION	39
-	1	1320922-1	DISC, ADJUST, INSULATION CRIMP	38
-	1	354777-1	WIRE DISC, ASSEMBLY	37
-	1	22480-5	SPRING, COMPRESSION	36
-	1	690212-1	POST, RAM	35
-	1	2-1752356-5	SUPPORT, TERMINAL	34
-	2	1-18024-0	SCR, BTN SKT HD CAP (M4 X 20.0)	33
-	1	18027-2	WASHER, FLAT, REG M4	32
-	1	1-18023-2	SCR, SKT HD CAP M4 X 12.0	31
-	1	1320908-4	SPACER, STRIP GUIDE	30
-	1	1633073-1	STRIP GUIDE ASSEMBLY	29
-	1	1-455888-0	SPACER, CRIMPER	28
-	2	1-22284-0	SPRING, COMPRESSION	27
-	1	356835-1	LEVER, DRAG RELEASE	26
-	1	240792-1	DRAG, TERMINAL	25
-	1	1320928-1	STRIP GUIDE	24
-	1	980371-4	SCR, SKT HD SHLDR 5.0 DIA X 6.0	23
-	1	1-18023-1	SCR, SKT HD CAP M4 X 10.0	21
-	4	18025-2	WASHER, SPRG LOCK, REG M4	20
-	1	690472-6	STRIPPER	19
-	1	2-690518-6	HOLD DOWN, TERMINAL	18
-	1	1338684-1	SHEAR HOLDER, FRONT	13
-	1	3-22280-3	SPRING, COMPRESSION	12
-	1	356885-4	STOP, SHEAR	11
-	1	1320921-1	SHEAR HOLDER, FRONT, CUT	10
-	1	462006-1	FLOATING SHEAR, FRONT	9
1	2	5-1333200-5	ANVIL, COMBINATION	8
-	1	1-240641-9	SPACER	7
-	-	-	-	6
-	1	2-455889-0	DEPRESSOR, SHEAR	5
-	1	2-238011-0	BLOCK, CRIMPER SPACER	4
1	2	1-722557-3	CRIMPER, INSULATION	3
-	1	455888-4	SPACER, CRIMPER	2
1	2	5-1633609-3	CRIMPER, WIRE	1

QTY	REV	PART NO	DESCRIPTION	ITEM NO				
-77	-76	-72	-71	-6	-2	-1		

THIS IS THE PROPERTY OF TYCO ELECTRONICS CORPORATION. IT IS TO BE USED ONLY FOR THE PURPOSES AND IN THE MANNER AND UNDER THE CONDITIONS SPECIFIED IN THE DRAWING. IT IS TO BE RETURNED TO TYCO ELECTRONICS CORPORATION OR ITS SUCCESSORS IF IT IS NOT USED IN THE MANNER AND UNDER THE CONDITIONS SPECIFIED IN THE DRAWING.

APV	02AUG2011	NAME	STE	TE Connectivity
CHK	02AUG2011	NAME	Harrisburg, PA 17105-3608	
APV	02AUG2011	NAME	SIDE FEED HDI APPLICATOR	
PRODUCT SPEC				
APPLICATION SPEC	See Table			
MATERIAL				
FINISH				
WEIGHT	A1 00779 C=2114127			
CUSTOMER ACCESSIBLE PRODUCTION DRAWING			SCALE	3:5
			SHEET	1 of 1
			REV	C