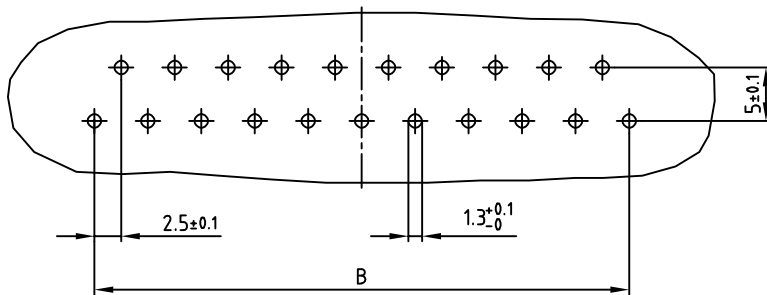
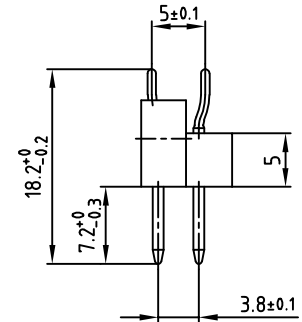
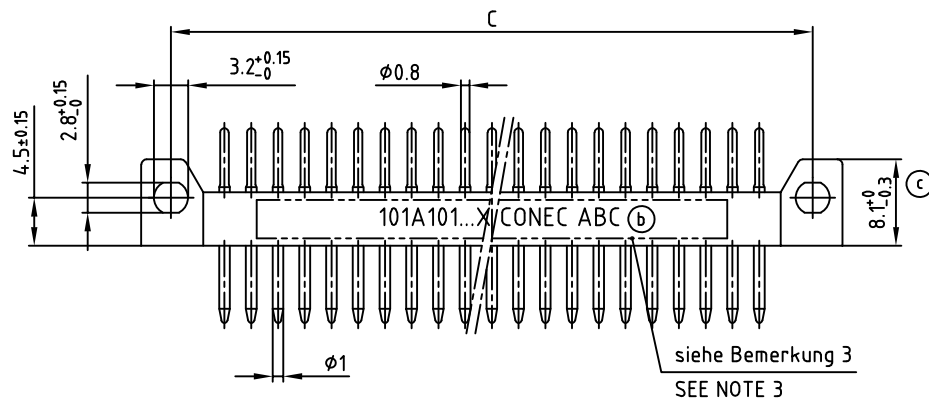
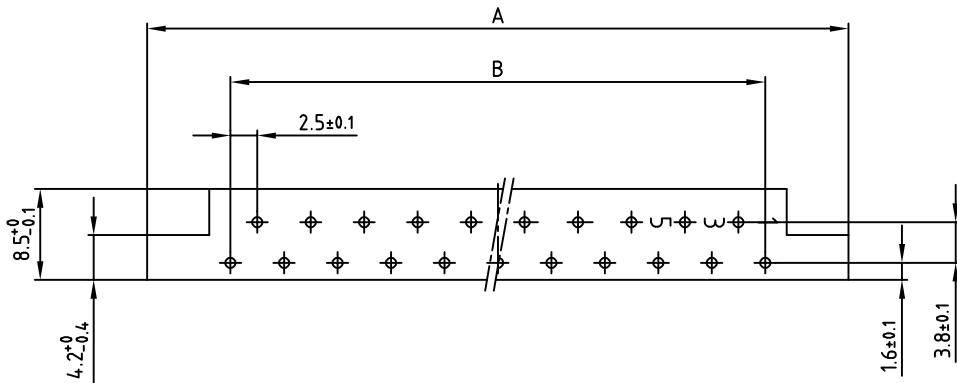


Polzahl No. of pos.	A ±0.2	B ±0.1	C ±0.1	Art.-Nr. Part-No.
13	45.6	12x2.5=30	40	101A10169X
31	90.6	30x2.5=75	85	101A10189X



- Bemerkung:
1. Isolierkörper: PC GF UL 94 V-1, grau (b)
 2. Kontakte: Cu-Legierung
Veredelung: Au über Ni
 3. Bedruckung: Art.-Nr. CONEC ABC

- NOTES:
1. INSULATOR: PC GF UL 94 V-1, GREY (b)
 2. CONTACTS: COPPER ALLOY
PLATING: GOLD FLASH over NICKEL
 3. CONNECTOR IS PART MARKED: PART-NO. CONEC ABC

Leiterplattenbohrbild
P.C.B.-HOLE DRILLINGS

Directive 2002/95/EC RoHS compliant

THIS DRAWING MAY NOT BE COPIED OR REPRODUCED IN ANY WAY, AND MAY NOT BE PASSED ON TO A THIRD PARTY WITHOUT WRITTEN PERMISSION. OWNERSHIP AND COPYRIGHT OF CONEC GmbH DO NOT ALTER CAD DRAWING BY HAND

1 x c	Ä4688	15.03.2013	E.Mick.	d-old
3 x b	Ä4154	08.11.2011	K.H.	
a	Original			
rev.	description	date	name	

tolerance	dim. in mm
2002	date
drawn	02.12.
name	Parei
appd.	02.12.
name	Labus
norm	DIN 41617

scale:	2:1
material:	SEE NOTES
title:	MALE CONNECTOR 13-31pos. with straight solder pins
dwg no:	10K1A004
part no:	SEE TABLE

DIN-A
3
sh: 1/1