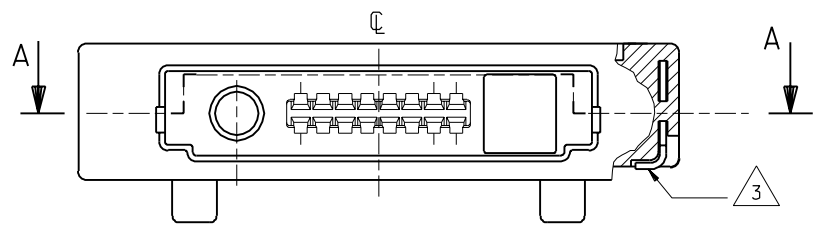
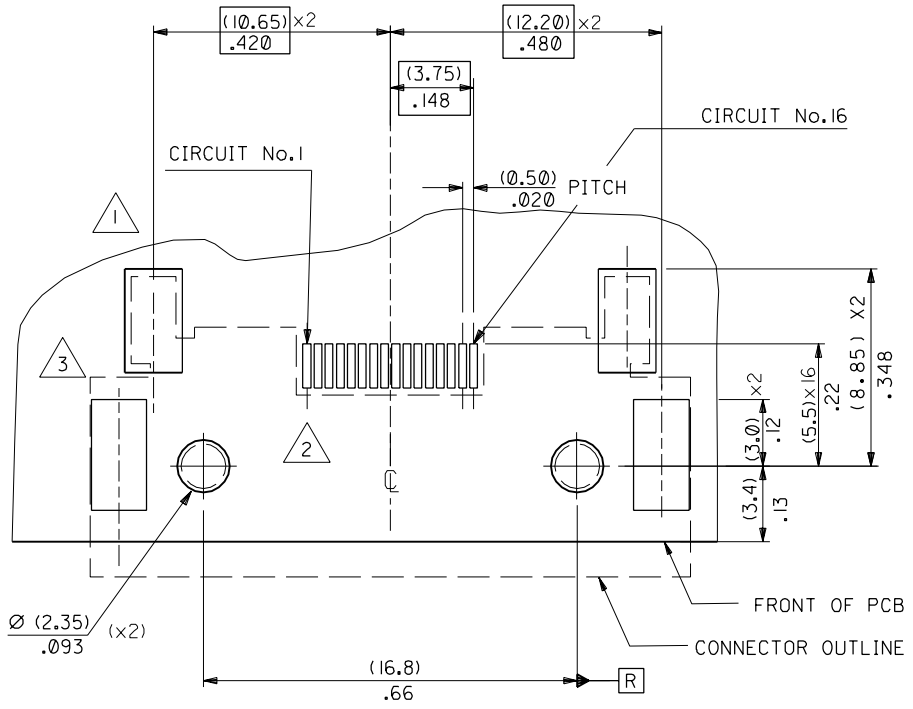
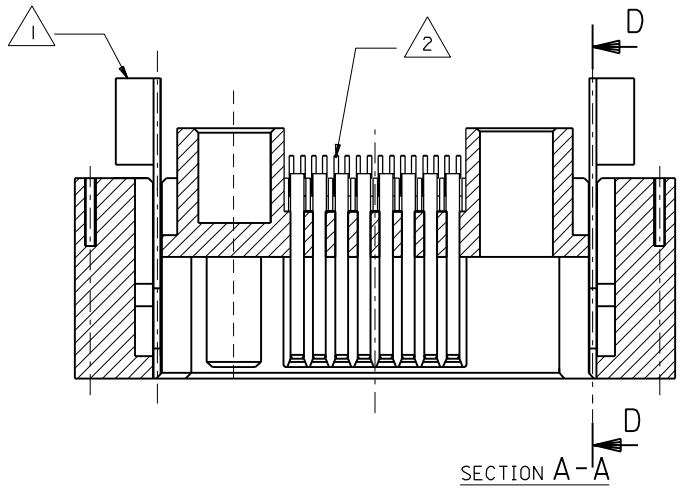


PART NO. SDA-90811-0107
 DWG. NO. 90811-0107



FOR MISSING DIMENSIONS SEE DRAWING SDA-90811-0109

COMPONENT	PCB PAD DIMENSION	QTY
LOCKING LATCHES 1	(2.60)/.102 x (4.65)/.183	$\text{⌀} (0.10) / .004 \text{ R} (x2)$
SIGNAL CONTACTS 2	$(0.35 \pm 0.05) / .014 \pm 0.002 \times (2.0) / .08$	$\text{⌀} (0.10) / .004 \text{ R} (x16)$
SMT RETENTION PADS 3	(2.50)/.098 x (5.0)/.197	$\text{⌀} (0.10) / .004 \text{ R} (x2)$

FOR PREVIOUS DRAWING ISSUES SEE MRI.

ORIGINAL RELEASE ECN E50434 95.03.29 HDU	DIMENSIONS SHOWN (METRIC) INCH UNLESS OTHERWISE SPECIFIED TOLERANCES: ANGULAR $\pm \frac{1}{2}^\circ$	DRWG BY HDU												
LTR REVISIONS	<table border="1"> <thead> <tr> <th></th> <th>INCH</th> <th>(METRIC)</th> </tr> </thead> <tbody> <tr> <td>3 PLACE</td> <td>$\pm .002$</td> <td></td> </tr> <tr> <td>2 PLACE</td> <td>$\pm .004$</td> <td>± 0.05</td> </tr> <tr> <td>1 PLACE</td> <td></td> <td>± 0.10</td> </tr> </tbody> </table>		INCH	(METRIC)	3 PLACE	$\pm .002$		2 PLACE	$\pm .004$	± 0.05	1 PLACE		± 0.10	CHK'D BY
		INCH	(METRIC)											
3 PLACE	$\pm .002$													
2 PLACE	$\pm .004$	± 0.05												
1 PLACE		± 0.10												
	DRAFT WHERE APPLICABLE MUST REMAIN WITHIN DIMENSIONS	APP'D BY												
	DESIGN DIMENSION (PRIMARY) <input checked="" type="checkbox"/> (MM) <input type="checkbox"/> IN.	SCALE												
	EQUIVALENT DIMENSION (SECONDARY) <input type="checkbox"/> (MM) <input checked="" type="checkbox"/> IN.	5:1												

REVISE ONLY ON CAD SYSTEM		SHL. REV.
CAD/CAM FILENAME S9081117 DGN	THIS DRAWING CONTAINS INFORMATION THAT IS PROPRIETARY TO MOLEX INC. & SHOULD NOT BE USED WITHOUT WRITTEN PERMISSION	
TITLE I/O CONNECTOR FOR MOBILE PHONE		
MOLEX EUROPE		SHEET NO. DATE 10F 1 95/03/29
PART NO. 90811-0107	DWG NO. SDA-90811-0107	SIZE B