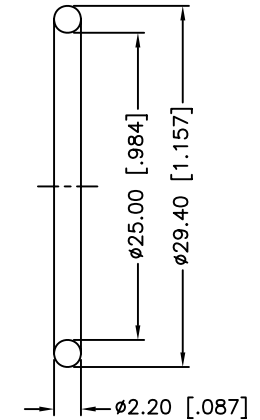
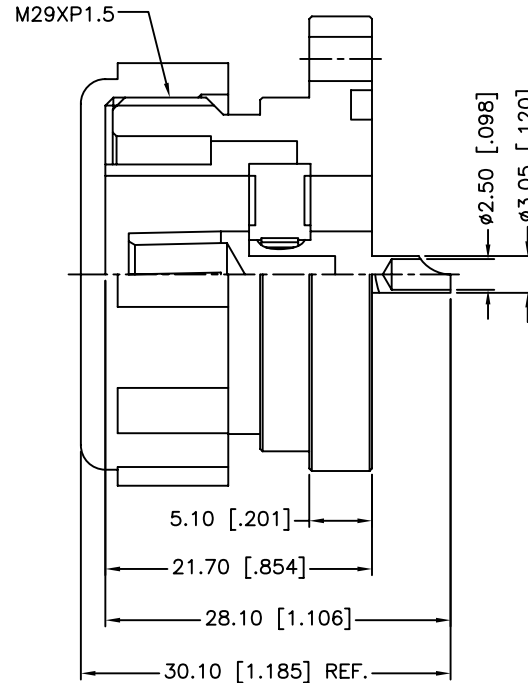
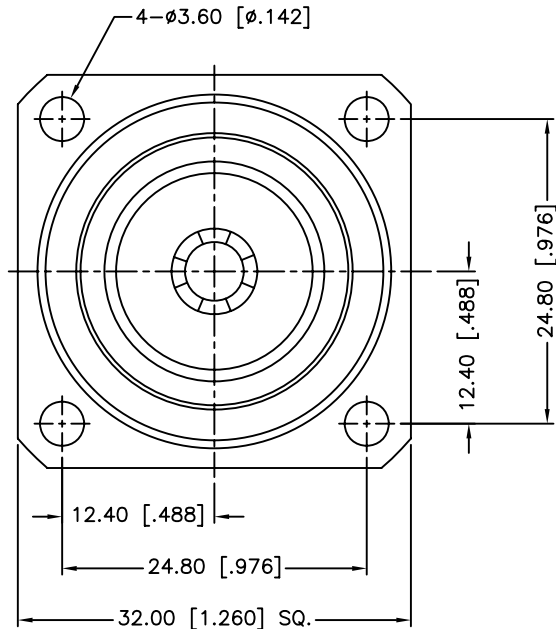


REV.	DATE	ECR NO.	DESCRIPTION
NC	08/05/00	XXXXXX	INITIAL RELEASE
A	09/25/13	2532	CORRECT CENTER CONTACT PLATING,ADD ELECTRICAL/MECHANICAL NOTES, UPDATE FORMAT



1. IMPEDANCE: 50 OHM
2. FREQUENCY RANGE: 0-7.5 GHZ
3. DIELECTRIC WITHSTANDING VOLTAGE: 2300 VRMS, MIN.
4. DURABILITY: 500 CYCLES MIN.
5. TEMPERATURE RANGE: -65°C TO +165°C

QTY	DESCRIPTION	MATERIAL	FINISH	QTY
7	GASKET	N. B. R.	BLACK	1
6	COVER	PE	BLUE	1
5	OUT CONTACT	BRASS	NEXCOTE	1
4	CONTACT PIN	BRASS	SILVER	1
3	CONTACT PIN	BER. COPPER	SILVER	1
2	INSULATOR	PTFE	NATURAL	1
1	BODY	BRASS	NEXCOTE	1

UNLESS OTHERWISE SPECIFIED DIMENSIONS ARE IN MILLIMETERS. DIMENSIONS IN [] ARE IN INCHES AND FOR CUSTOMER REFERENCE ONLY.
 UNLESS OTHERWISE SPECIFIED
 TOLERANCES FOR MILLIMETERS ARE:
 <0.5 ± 0.05mm
 0.5 - 6mm ± 0.10mm
 6 - 30mm ± 0.20mm
 30 - 120mm ± 0.30mm
 ANGLES ± 1°
 UNLESS OTHERWISE SPECIFIED
 TOLERANCES FOR INCHES ARE:
 <.020 ± 0.002"
 .020 - .236 ± 0.004"
 .236 - 1.180 ± 0.007"
 1.180 - 4.724 ± 0.012"
 ANGLES ± 1°
 DO NOT SCALE DRAWING

APPROVALS	DATE
DRAWN M.ZHANG	09/25/13
CHECKED	
ISSUED	
SHEET 1 OF 1	
CAD FILE C:/CONNEX/272130-10.DWG	

Amphenol Connex

PART DESCRIPTION
**7/16 PANEL RECEPTACLE JACK
(O-RING SEAL)**

PART NO. **272130-10**

DWG. NO. 272130-10.DWG	REV. A	SIZE A	SCALE NA
------------------------	--------	--------	----------