

MATERIALS AND FINISHES

BODY, COUPLING NUT: BRASS  
PLATED NICKEL

CONTACT: BRASS  
PLATED GOLD

CRIMP TUBE, COVER: BRASS  
PLATED NICKEL

SNAP RING: BERYLLIUM COPPER

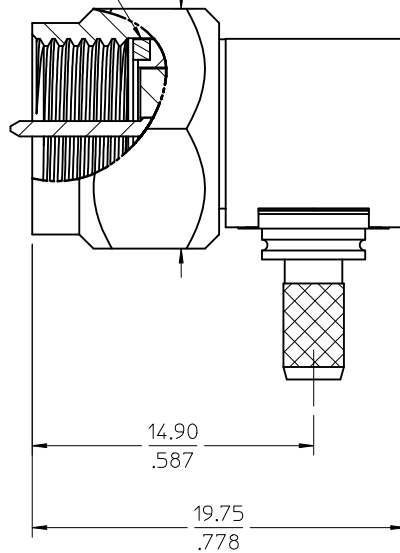
INSULATOR: TEFLON

GASKET (SEE TABLE): SILICONE RUBBER

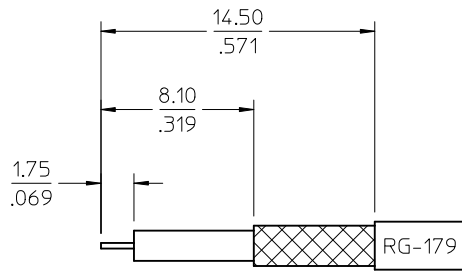
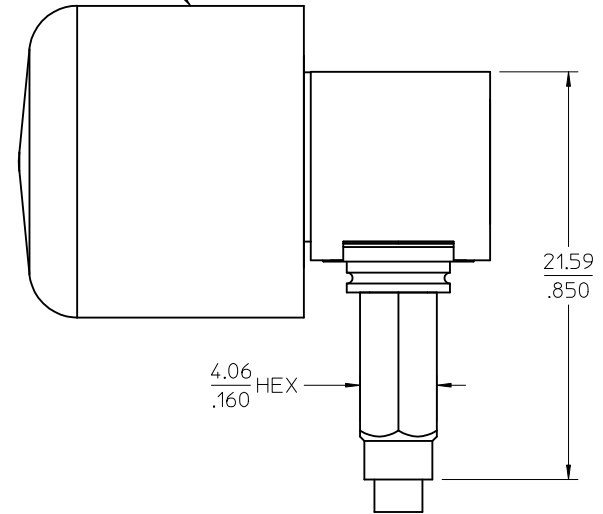
CAP: VINYL (BLACK)

SEE TABLE  
FOR GASKET

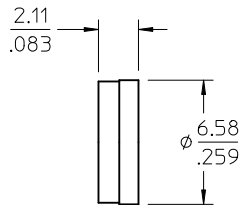
12.70  
.500 HEX



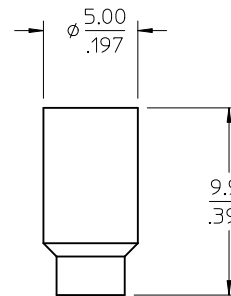
PROTECTIVE CAP



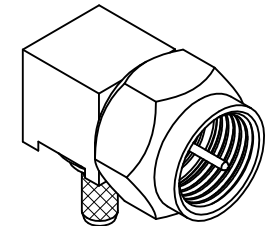
RECOMMENDED CABLE STRIP



CAP



CRIMP TUBE



73356-0231	WITH INTERFACE GASKET
73356-0230	WITHOUT INTERFACE GASKET
PART NO.	DESCRIPTION

PS-89675-3640	ELECTRO PERFORMANCE
SPECIFICATION	DESCRIPTION

CHG: UPDATE VIEWS  
PS WAS  
PS-89675-4710  
EC NO:  
2010/06/30  
DRWN: JWIENER  
2010/07/01  
CHKD: SSS  
2010/07/01  
APPR: JWIENER  
2010/07/01  
REV  
A7

QUALITY SYMBOLS  
▽=0  
▽=0

GENERAL TOLERANCES (UNLESS SPECIFIED)

	mm	INCH
4 PLACES	± .005	± .0002
3 PLACES	± .003	± .0001
2 PLACES	± .002	± .00005
1 PLACE	± .001	± .00002

ANGULAR ± 2°

DRAFT WHERE APPLICABLE  
MUST REMAIN  
WITHIN DIMENSIONS

DIMENSION STYLE  
MM/IN

DRAWN BY	DATE
LMB	2000/10/02
CHECKED BY	DATE
GMH	2000/10/02
APPROVED BY	DATE
JWIENER	2010/07/01

MATERIAL NO.  
SEE TABLE

SCALE  
DESIGN UNITS  
METRIC

THIRD ANGLE PROJECTION

TITLE  
F PLUG, R/A  
FOR RG179  
F-PC

MOLEX MOLEX INCORPORATED

DOCUMENT NO.  
SD-73356-023

SHEET NO.  
1 OF 1

THIS DRAWING CONTAINS INFORMATION THAT IS PROPRIETARY TO MOLEX INCORPORATED AND SHOULD NOT BE USED WITHOUT WRITTEN PERMISSION