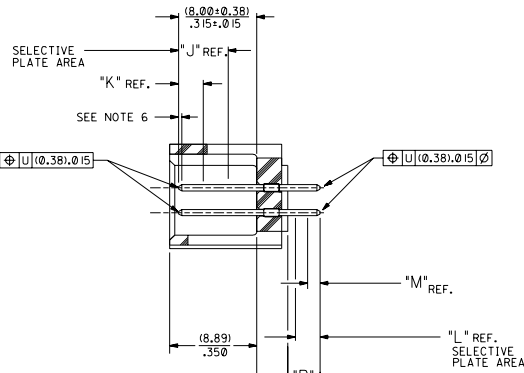
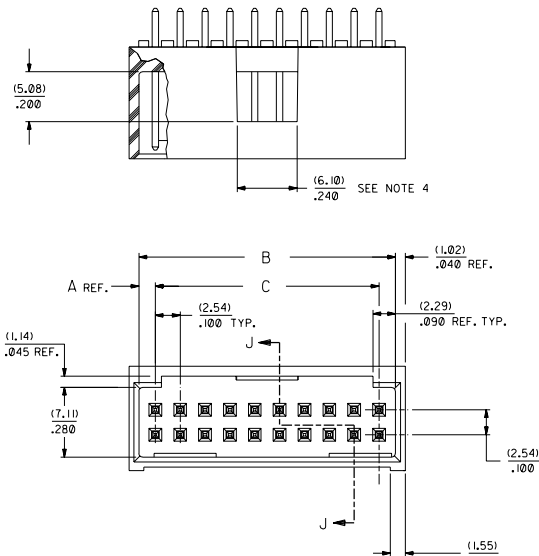


RECOMMENDED P.C. BOARD HOLE LAYOUT



SECTION J-J

NOTES:

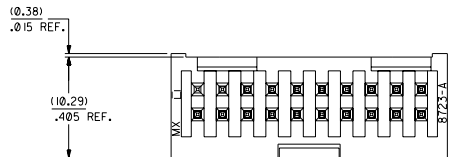
- 1- 20 CIRCUIT SIZE SHOWN FOR ILLUSTRATION PURPOSES.
- 2- PIN PUSHOUT FORCE: (17.79 N) 1/4 LBS.
- 3- PINS MUST MEET SOLDERABILITY SPEC. MIL-STD-202 METHOD 208B.
- 4- WINDOW NOT AVAILABLE ON 6 AND 8 CIRCUIT SIZE.
- 5- FOR CHARTED DIMENSIONS AND ASSEMBLY NO.S NOT SHOWN ON THIS SHEET - SEE SHEET 2.
- 6- ROW TO ROW PIN HEIGHT VARIATION MUST NOT EXCEED (0.13)/.005 IN.
- 7- PRODUCT CONFORMS TO PS-8723.

CKT.	8723		DIM. 'C'	DIM. 'D'	DIM. 'E'
	DIM. 'A'	DIM. 'B'			
06	(1.68) .066	(8.43) .332	(5.08) .200	(1.68) .066	
08	(1.68) .066	(10.97) .432	(7.62) .300	(1.68) .066	
10	(1.68) .066	(13.51) .532	(10.16) .400	(4.22) .166	
12	(1.68) .066	(16.05) .632	(12.70) .500	(4.22) .166	
14	(1.68) .066	(18.59) .732	(15.24) .600	(6.76) .266	
16	(1.68) .066	(21.13) .832	(17.78) .700	(6.76) .266	
18	(1.68) .066	(23.67) .932	(20.32) .800	(9.30) .366	
20	(1.68) .066	(26.21) 1.032	(22.86) .900	(1.68) .066	(19.46) .766
22	(1.68) .066	(28.75) 1.132	(25.40) 1.000	(1.68) .066	(22.00) .866
24	(1.68) .066	(31.29) 1.232	(27.94) 1.100	(1.68) .066	(24.54) .966
26	(1.68) .066	(33.83) 1.332	(30.48) 1.200	(1.68) .066	(27.08) 1.066
28	(1.68) .066	(36.37) 1.432	(33.02) 1.300	(1.68) .066	(29.62) 1.166
30	(1.68) .066	(38.91) 1.532	(35.56) 1.400	(1.68) .066	(32.16) 1.266
32	(1.68) .066	(41.45) 1.632	(38.10) 1.500	(1.68) .066	(34.70) 1.366
34	(1.68) .066	(43.99) 1.732	(40.64) 1.600	(1.68) .066	(37.24) 1.466
36	(1.68) .066	(46.53) 1.832	(43.18) 1.700	(1.68) .066	(39.78) 1.566
38	(1.68) .066	(49.07) 1.932	(45.72) 1.800	(1.68) .066	(42.32) 1.666
40	(1.68) .066	(51.61) 2.032	(48.26) 1.900	(1.68) .066	(44.86) 1.766
42	(1.68) .066	(54.15) 2.132	(50.80) 2.000	(1.68) .066	(47.40) 1.866
44	(1.68) .066	(56.69) 2.232	(53.34) 2.100	(1.68) .066	(49.94) 1.966
46	(1.68) .066	(59.23) 2.332	(55.88) 2.200	(1.68) .066	(52.48) 2.066
48	(1.68) .066	(61.77) 2.432	(58.42) 2.300	(1.68) .066	(55.02) 2.166
50	(1.68) .066	(64.31) 2.532	(60.96) 2.400	(1.68) .066	(57.56) 2.266
52	(1.68) .066	(66.85) 2.632	(63.50) 2.500	(1.68) .066	(60.10) 2.366
54	(1.68) .066	(69.39) 2.732	(66.04) 2.600	(1.68) .066	(62.64) 2.466
56	(1.68) .066	(71.93) 2.832	(68.58) 2.700	(1.68) .066	(65.18) 2.566
58	(1.68) .066	(74.47) 2.932	(71.12) 2.800	(1.68) .066	(67.72) 2.666
60	(1.68) .066	(77.01) 3.032	(73.66) 2.900	(1.68) .066	(70.26) 2.766
62	(1.68) .066	(79.55) 3.132	(76.20) 3.000	(1.68) .066	(72.80) 2.866
64	(1.68) .066	(82.09) 3.232	(78.74) 3.100	(1.68) .066	(75.34) 2.966
66	(1.68) .066	(84.63) 3.332	(81.28) 3.200	(1.68) .066	(77.88) 3.066
68	(1.68) .066	(87.17) 3.432	(83.82) 3.300	(1.68) .066	(80.42) 3.166
70	(1.68) .066	(89.71) 3.532	(86.36) 3.400	(1.68) .066	(82.96) 3.266
72	(1.68) .066	(92.25) 3.632	(88.90) 3.500	(1.68) .066	(85.50) 3.366

MATERIAL:

SHROUDED WAFER: GLASS FILLED POLYESTER, 94V-0; COLOR: BLACK.
PINS: PHOSPHOR BRONZE, SEE SHEET 2 FOR FINISHES.

ASSEMBLY STYLE "A" AND "B"



MFG. SH. REV. LTR. REVISIONS

REVISIONS:

7	U		
6	T		
5	R2		
4	T		
3	R2		
2	T		
1	U		

MOLEX INCORPORATED

SALES ASSEMBLY WAFER - STRAIGHT MT. FULLY SHROUDED .1000 GRID - FOR USE W/.025 SQ. PINS WITH .066 END WALLS

DATE 09/17/11

SEE CHART SDA-8723-*****

DATE 09/17/11

SCALE 4 : 1

- U ADD -3803 OPT
DCP2004-2260
DMORGAN 04/05/20
- T LEAD FREE
USP2004-1770
RWWHITE 04/04/26
- S ADD -3802 OPTION
ECN #10P2004-1052
DMORGAN 04/01/2
- R2 TAB DIF DIM 6 CIR
ECN #10P1999-0145
DMORGAN 56/09/01
- R1 ADD WDG LATCH NOTE
ECN #10P1998-0399
DMORGAN 56/06/23
- R ADD SHEET 7
PER ECR NO US1008
03-23-96
- O REMOVE FDP NO.S
PER ECR NO US1025
05-19-94
- P CHGD WINDOW NOTES
PER ECR NO US30316
05-04-93
- O CHANGED MATERIAL
PER ECR NO US1046
01-22-93
- R2 REVISED & REDRAWN
PER ECR NO US1073
05-29-92
- N LTR REVISIONS

