

REVISIONS				
REV.	ECN	DESCRIPTION	DATE	APPROVED
A		PROPOSAL	X	

PART NUMBER
(LAST DIGIT INDICATING PACKAGING
TYPE, NOT INCLUDED ON THE PRINT)

DATE CODE

MATERIAL:
CAGE: COPPER ALLOY.

PLATING:
PLATING OPTION 2: 2.54 µm MIN. NICKEL PLATING.
PLATING OPTION 3: 2.54 - 7.62 µm MATTE TIN PLATING OVER 1.27 µm.

PACKAGING: TRAY PACKAGING.

TEMPERATURE RANGE: -40°C TO 85°C.

AMPHENOL PART NUMBER CONFIGURATION

U77 - A 1 11 L - X 0 7 1

CAGE PLATING:
2 = NICKEL
3 = MATTE TIN

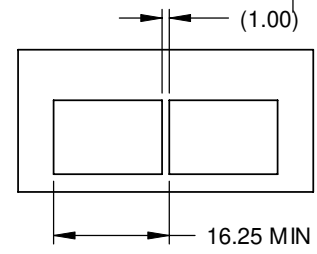
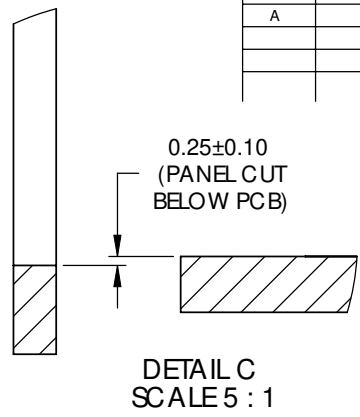
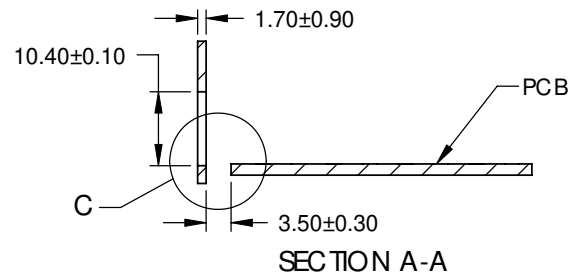
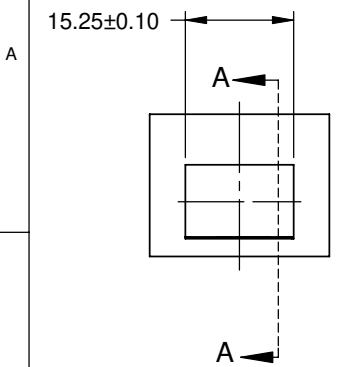
PACKAGING:
1 = TRAY PACKAGING

DO NOT SCALE DRAWING

THIS DOCUMENT CONTAINS PROPRIETARY INFORMATION AND SUCH INFORMATION MAY NOT BE DISCLOSED TO OTHERS FOR ANY PURPOSE OR USED FOR MANUFACTURING PURPOSES WITHOUT PERMISSION FROM AMPHENOL CANADA CORP.

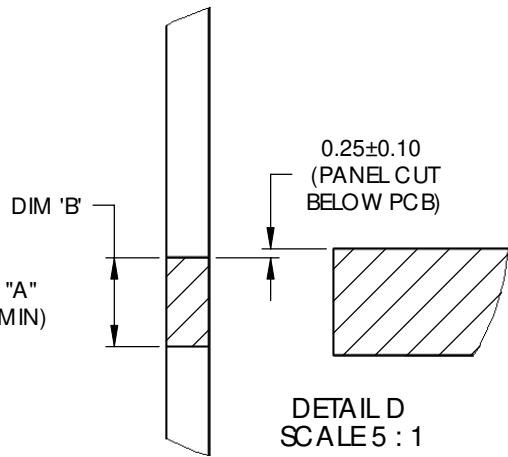
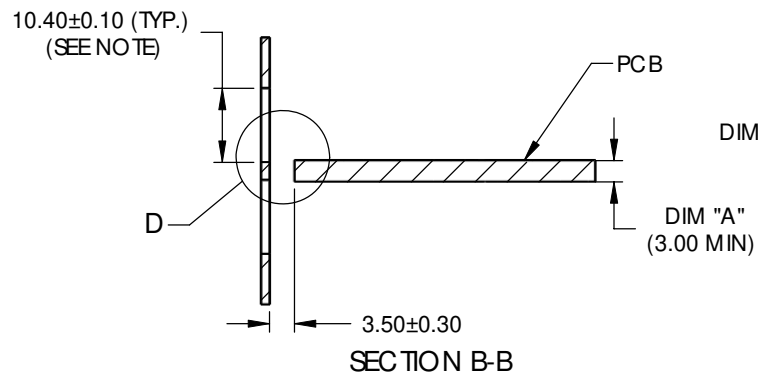
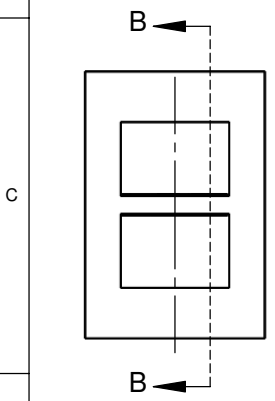
UNLESS OTHERWISE SPECIFIED DIMENSIONS ARE IN MILLIMETERS TOLERANCES ARE:		APPROVALS		DATE	Amphenol Canada Corp. TITLE 1X1 SFP CAGE WITH 8 PRESS FIT PINS	
DECIMALS	ANGLES	DRAWN	J.S	DEC 09/10		
X.X ± 0.40	± 1°	DESIGNED	J.S	DEC 09/10		
X.XX ± 0.25		CHECKED	X	X		
MATERIAL AND FINISH		QA APPD	X	X	SIZE A4 DWG. NO. P-U77-A111L-X071 REV. A	
N/A		IE APPD	X	X		
REF.	X	CODE IDENT. NO.	03554	DWG APPD	SCALE 2:1	PROJECT SHEET 1 OF 4

REVISIONS				
REV.	ECN	DESCRIPTION	DATE	APPROVED
A		PROPOSAL	X	



**RECOMMENDED BEZEL DESIGN
(SINGLE SIDE CAGE MOUNT)**

**DETAIL C
SCALE 5 : 1**



NOTE:
 PANEL CUT OUT SIZES PER SFF 8433 SPEC. FOR BELLY TO BELLY MOUNTING, DIM "A" (PCB THICKNESS) IS 3.0 mm MIN. DIM "B" RELATED TO DIM "A". FOR DIM "B" = DIM "A" - 0.80 mm. THE PANEL CUT OUT 10.40 mm MIGHT BE INCREASED UP TO 10.80 mm IN ORDER TO ACCOMMODATE PCB TOLERANCE.

**RECOMMENDED BEZEL DESIGN
(BELLY-TO-BELLY CAGE MOUNT)**

**DETAIL D
SCALE 5 : 1**

DO NOT SCALE DRAWING

THIS DOCUMENT CONTAINS PROPRIETARY INFORMATION AND SUCH INFORMATION MAY NOT BE DISCLOSED TO OTHERS FOR ANY PURPOSE OR USED FOR MANUFACTURING PURPOSES WITHOUT PERMISSION FROM AMPHENOL CANADA CORP.

UNLESS OTHERWISE SPECIFIED DIMENSIONS ARE IN MILLIMETERS TOLERANCES ARE: DECIMALS X.X ± 0.40 X.XX ± 0.25 MATERIAL AND FINISH N/A REF. X CODE IDENT. NO. 03554	APPROVALS		DATE
	DRAWN	J.S	NOV12/10
	DESIGNED	J.S	NOV12/10
	CHECKED	X	X
	QA APPD	X	X
	IE APPD	X	X
	DWG APPD		

Amphenol Canada Corp.

TITLE
 1X2 SFP+ CAGE WITH HEATSINK ATTACHED

SIZE **A4** DWG. NO. **P-U77-A111L-X071** REV. **A**

SCALE **1:1** PROJECT SHEET **2 OF 4**

NOTES:

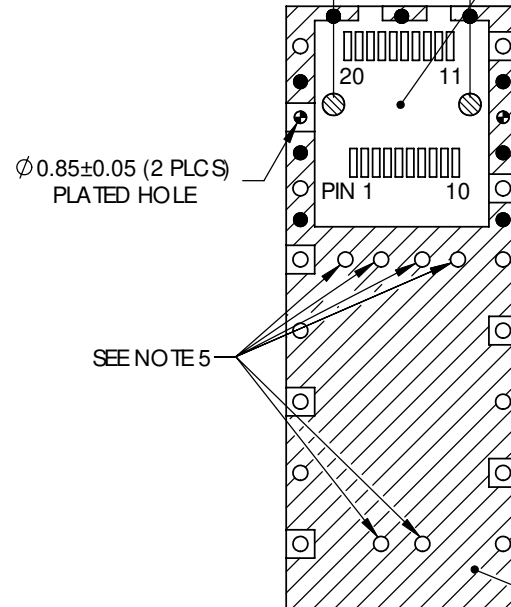
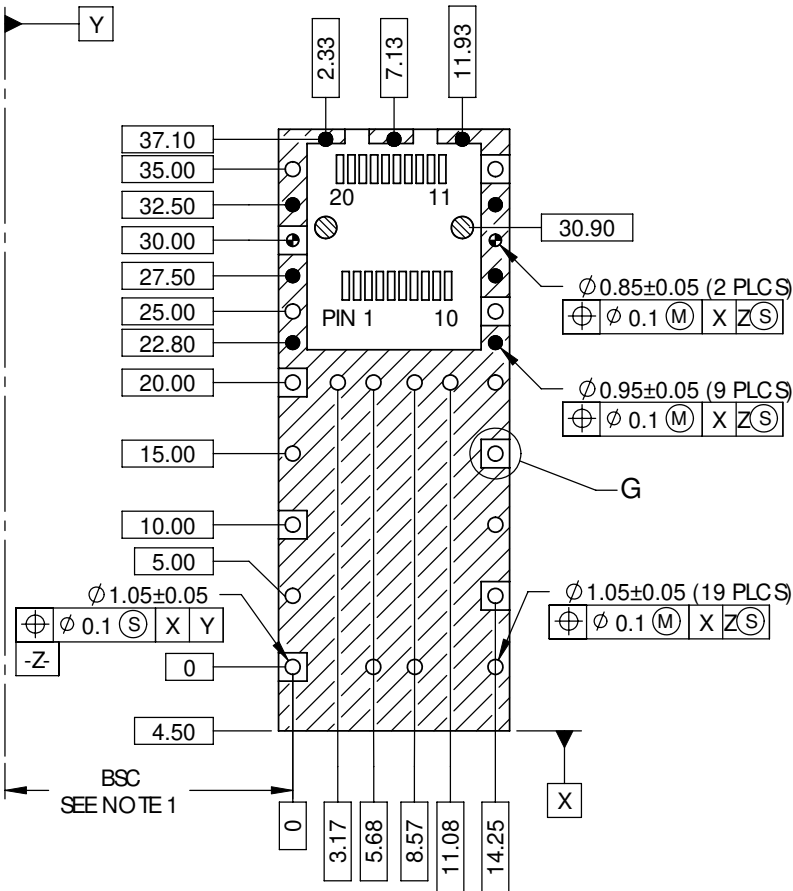
1. DATUM AND BASIC DIMENSIONS ESTABLISHED BY CUSTOMER.
2. PADS AND VIAS ARE CHASSIS GROUND.
3. THRU-HOLES PLATING OPTIONAL.
4. SEE DRAWING P-UE75-A20-X00XX FOR CONNECTOR LAYOUT.
5. THESE HOLES ARE OPTIONAL. NOT REQUIRED FOR THIS CAGE.

HOLE SIZES

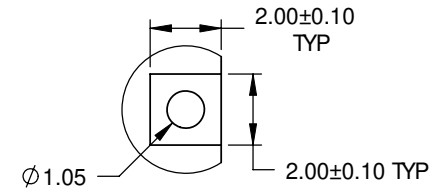
- ⊘ 1.55
- 1.05
- 0.95
- ◐ 0.85

REVISIONS

REV.	ECN	DESCRIPTION	DATE	APPROVED
A		PROPOSAL	X	



THIS AREA DENOTES COMPONENTS KEEP-OUT (TRACES ALLOWED)



DETAIL G
SCALE 5 : 1

CROSS-HATCHED AREA DENOTES COMPONENT AND TRACE KEEP-OUT (EXCEPT CHASSIS GROUND)

**RECOMMENDED SFP+ HOST PCB LAYOUT
BELLY-TO-BELLY CAGE MOUNTING**

DO NOT SCALE DRAWING

THIS DOCUMENT CONTAINS PROPRIETARY INFORMATION AND SUCH INFORMATION MAY NOT BE DISCLOSED TO OTHERS FOR ANY PURPOSE OR USED FOR MANUFACTURING PURPOSES WITHOUT PERMISSION FROM AMPHENOL CANADA CORP.

UNLESS OTHERWISE SPECIFIED DIMENSIONS ARE IN MILLIMETERS TOLERANCES ARE: DECIMALS ANGLES X.X ± 0.40 ± 1° X.XX ± 0.25	APPROVALS		DATE
	DRAWN	J.S	NOV12/10
MATERIAL AND FINISH N/A	DESIGNED	J.S	NOV12/10
	CHECKED	X	X
REF. X	QA APPD	X	X
	IE APPD	X	X
CODE IDENT. NO. 03554	DWG APPD		

Amphenol Canada Corp.

TITLE

1X2 SFP+ CAGE
WITH HEATSINK ATTACHED

SIZE
A4

DWG. NO.

P-U77-A111L-X071

REV. A

SCALE

2:1

PROJECT

SHEET

4 OF 4