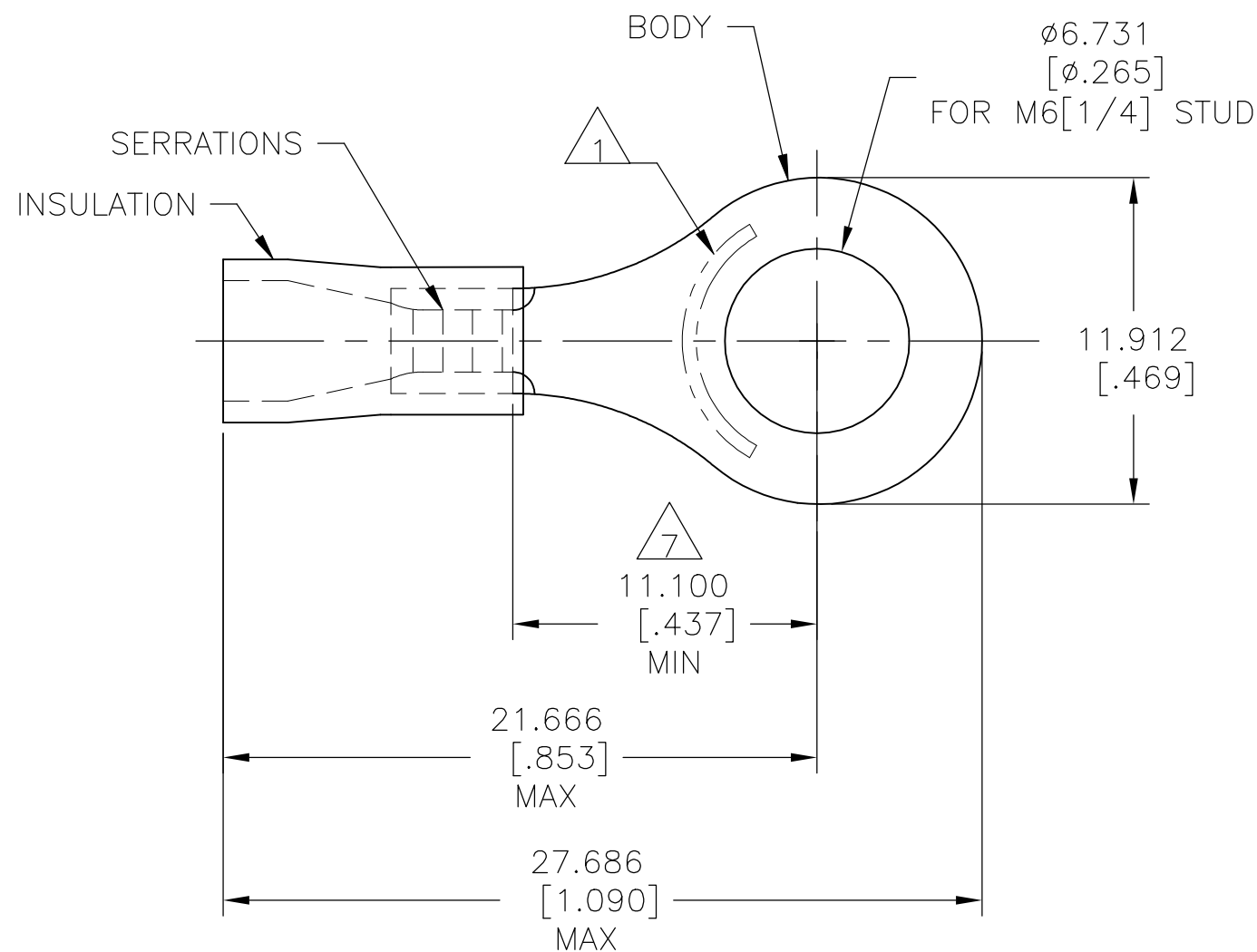


REVISIONS

P	LTR	DESCRIPTION	DATE	DWN	APVD
	M1	REVISED PER ECO-11-004820	11MAR11	RK	HMR
	M2	REVISED PER ECO-17-014338	11MAY2018	RS	DR

AMP WIRE RANGE	Listed	LR7189 Certified
16-14 AWG SOLID OR STRANDED	16-14 AWG SOLID OR STRANDED	16-14 AWG SOLID OR STRANDED



- 1 STAMP AMP 16-14* APPROX AS SHOWN
- 2 WIRE INSULATION DIA:
ø2.997-ø4.902[ø.118-ø.193]
- 3 BODY MATERIAL THK: 0.787±0.051[.031±.002]
- 4 MATERIAL:
BODY - CU PER ASTM B152
SLEEVE - PVC
- 5 NOTE DELETED
- 6 REPLACED BY 8-34162-1
- 7 APPLIES FROM CENTER OF STUD HOLE TO
EDGE OF METAL WIRE BARREL

4000	ON TAPE, REEL	4 2-34162-1
1000	LOOSE PIECE	4 34162
QTY	PACKAGE TYPE	PART NO.

AMP INCORPORATED
CUSTOMER SERVICE SYSTEMS

FOR ADDITIONAL
PRODUCT INFORMATION OR
COPIES OF DRAWINGS
AND TECHNICAL DOCUMENTS

PRODUCT INFORMATION CENTER
1-800-522-6752

FOR APPLICATION
TOOLING INFORMATION

TOOLING ASSISTANCE CENTER
1-800-722-1111

FOR ORDER ENTRY

1-800-526-5142

THIS DRAWING IS A CONTROLLED DOCUMENT FOR
AMP INCORPORATED. IT IS SUBJECT TO CHANGE
AND THE CONTROLLING ENGINEERING ORGANIZATION
SHOULD BE CONTACTED FOR THE LATEST REVISION.

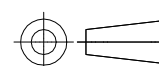
MAX RECOMMENDED OPERATING
TEMPERATURE:
105°C [221° F]

VOLTAGE RATING:
600V
(1000 V SIGNS OR FIXTURES)

CIRCULAR MIL AREA:
1.04-2.62mm²[2,050-5,180]
SOLID OR STRANDED

THIS DRAWING IS A CONTROLLED DOCUMENT.

DIMENSIONS:
mm [INCHES]



TOLERANCES UNLESS
OTHERWISE SPECIFIED:

- 0 PLC ± -
- 1 PLC ± -
- 2 PLC ± -
- 3 PLC ± 0.127[.005]
- 4 PLC ± -
- ANGLES ± -

MATERIAL

SEE NOTES

FINISH

BODY:
TIN PER ASTM B545
INSULATION:
COLOR - BLUE

DWN 08/06/92

DK SCHRUM

CHK 11/10/92

RE HERSEY

APVD 11/10/92

M ELLIS

PRODUCT SPEC

UL 486 A-B

APPLICATION SPEC

114-2161

WEIGHT

CUSTOMER DRAWING

NAME

STE TE Connectivity Ltd.

TERMINAL, RING TONGUE,
PLASTI-GRIP
16-14 AWG

SIZE

A3

CAGE CODE

00779

DRAWING NO

C-34162

RESTRICTED TO

-

SCALE 4:1

SHEET 1 OF 1

REV M2