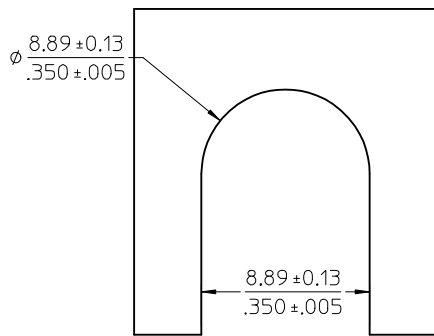
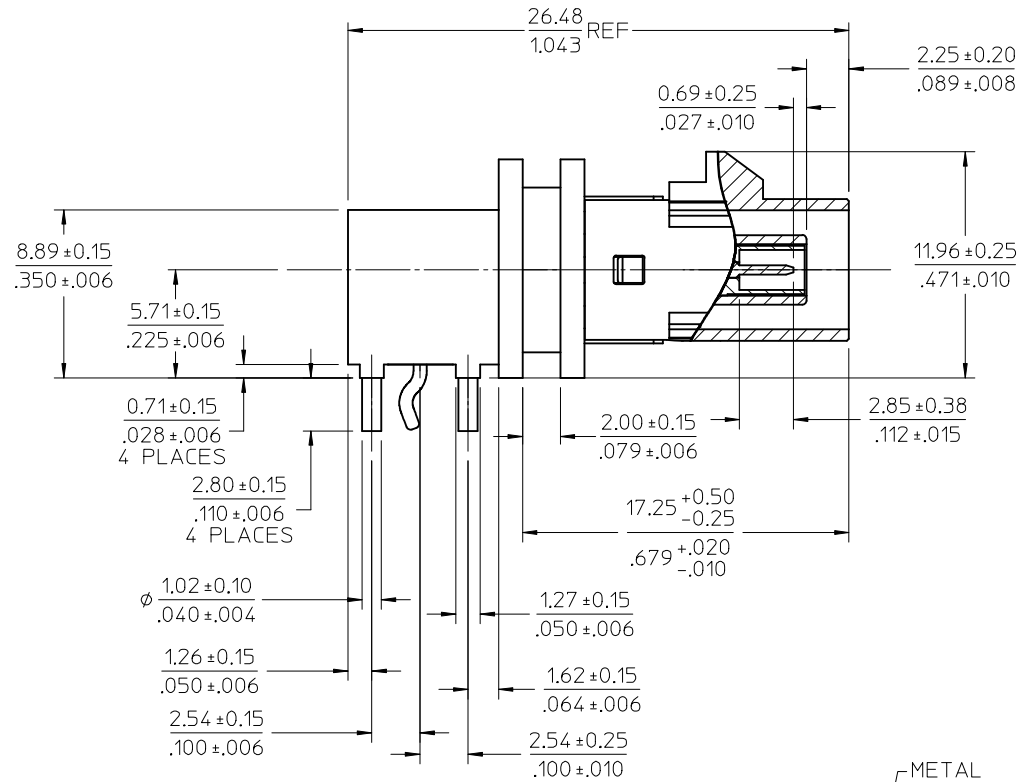
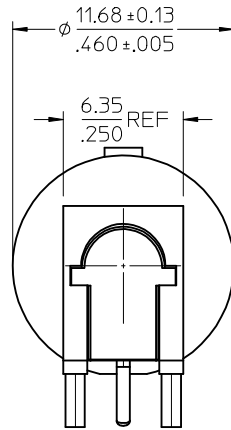


MATERIALS AND FINISHES

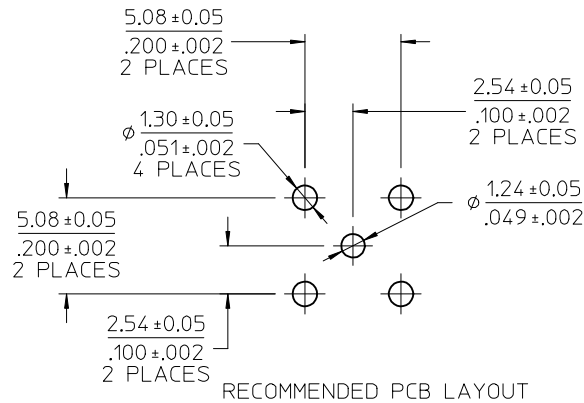
- BODY ZINC
PLATED TIN (100 MICROINCHES MIN)
- CENTER CONTACT PHOSPHOR BRONZE
PLATED GOLD (30 MICROINCHES MIN)
- INSULATOR TEFLON
- OUTER CASING: HIGH TEMPERATURE PLASTIC
- KEYING: SEE SHEET 2
- COLOR: SEE SHEET 2
- RETENTION SPECIFICATION:
THE FAKRA CONNECTOR WILL WITHSTAND
A LONGITUDINAL FORCE OF 110 N (24.75 LBS)



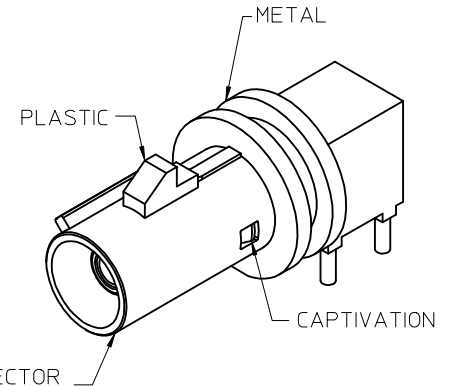
RECOMMENDED PANEL LAYOUT

1.89mm (.074 inch) MAX PANEL

PART # SEE SHEET 2



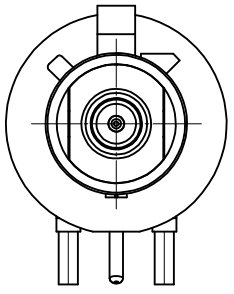
RECOMMENDED PCB LAYOUT



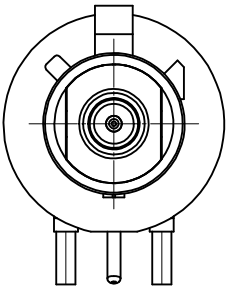
FAKRA CONNECTOR
KEYING CODE D SHOWN

ADDED DIM. AND SHEET 3 PER RF14-E093 EC NO: URF2014-0486 DR: WNELIN 2014/02/25 CHKD: APPR: MHUANG 2014/02/27 REV: A7	QUALITY SYMBOLS ▽=0 ▽=0	GENERAL TOLERANCES (UNLESS SPECIFIED)		DIMENSION STYLE MM/IN		SCALE	DESIGN UNITS METRIC	THIRD ANGLE PROJECTION		
		4 PLACES ± --- ± ---	3 PLACES ± --- ± ---	2 PLACES ± --- ± ---	1 PLACE ± --- ± ---	DRAWN BY SSS	DATE 2001/02/28	TITLE	SMB JACK, R/A, FAKRA KINKED TAIL, 50 OHMS SMB-J/PCB	
		ANGULAR ± 2 °				CHECKED BY TEF	DATE 2001/02/28	MOLEX INCORPORATED		
		DRAFT WHERE APPLICABLE MUST REMAIN WITHIN DIMENSIONS				APPROVED BY MHUANG	DATE 2010/04/26		DOCUMENT NO. SD-73415-286	SHEET NO. 1 OF 3

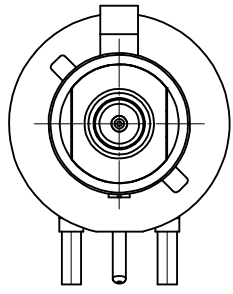
THIS DRAWING CONTAINS INFORMATION THAT IS PROPRIETARY TO MOLEX INCORPORATED AND SHOULD NOT BE USED WITHOUT WRITTEN PERMISSION



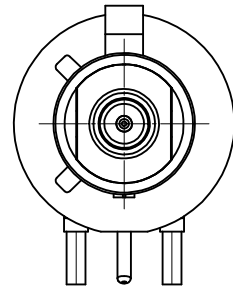
CODE - A



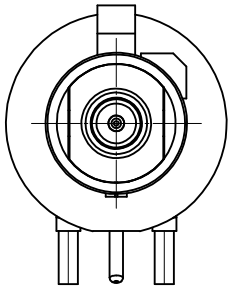
CODE - B



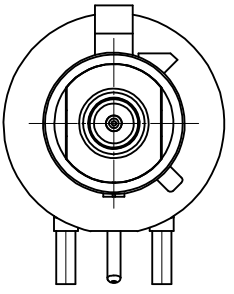
CODE - C



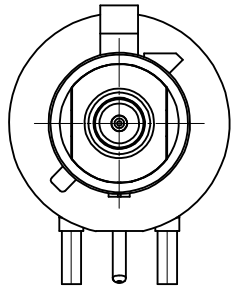
CODE - D



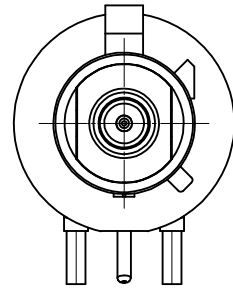
CODE - E



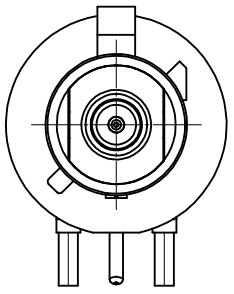
CODE - F



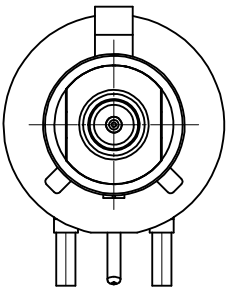
CODE - G



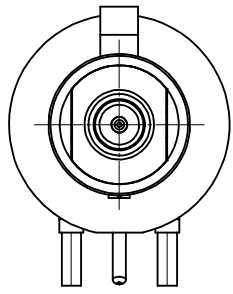
CODE - H



CODE - I



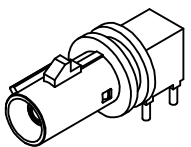
CODE - K



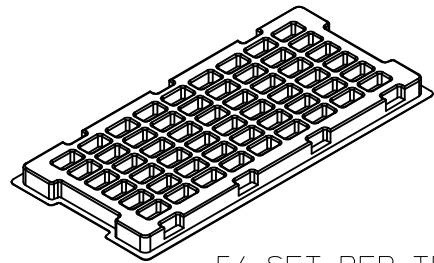
CODE - Z

Z	WATER BLUE	73415-2870
K	CURRY YELLOW	73415-2869
I	BEIGE	73415-2868
H	VIOLET	73415-2867
G	GRAY	73415-2866
F	BROWN	73415-2865
E	GREEN	73415-2864
D	BORDEAUXVIOLET	73415-2863
C	BLUE	73415-2862
B	CREAM WHITE	73415-2861
A	BLACK	73415-2860
KEYING CODE	COLOR	PART NO.

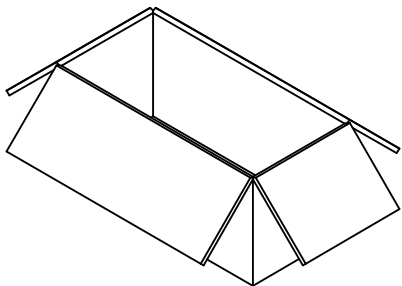
CHG: SEE SHEET 1 EC NO: URF2014-0486 DRW: INELIN 2014/02/25 CHKD: APPR: MHUANG 2014/02/27	DESCRIPTION A7	QUALITY SYMBOLS ▽=0 ▽=0	GENERAL TOLERANCES (UNLESS SPECIFIED) <table border="1"> <tr> <th></th> <th>mm</th> <th>INCH</th> </tr> <tr> <td>4 PLACES</td> <td>± ---</td> <td>± ---</td> </tr> <tr> <td>3 PLACES</td> <td>± ---</td> <td>± ---</td> </tr> <tr> <td>2 PLACES</td> <td>± ---</td> <td>± ---</td> </tr> <tr> <td>1 PLACE</td> <td>± ---</td> <td>± ---</td> </tr> </table> ANGULAR ± 2 °		mm	INCH	4 PLACES	± ---	± ---	3 PLACES	± ---	± ---	2 PLACES	± ---	± ---	1 PLACE	± ---	± ---	DIMENSION STYLE DRAWN BY: SSS DATE: 2001/02/28 CHECKED BY: TEF DATE: 2001/02/28 APPROVED BY: MHUANG DATE: 2010/04/26	SCALE: 5:1 DESIGN UNITS: METRIC THIRD ANGLE PROJECTION	TITLE: SMB JACK, R/A, FAKRA KINKED TAIL, 50 OHMS SMB-J/PCB	MATERIAL NO. SEE TABLE DOCUMENT NO. SD-73415-286	SHEET NO. 2 OF 3
			mm	INCH																			
		4 PLACES	± ---	± ---																			
		3 PLACES	± ---	± ---																			
2 PLACES	± ---	± ---																					
1 PLACE	± ---	± ---																					
DRAFT WHERE APPLICABLE MUST REMAIN WITHIN DIMENSIONS			MOLEX INCORPORATED		THIS DRAWING CONTAINS INFORMATION THAT IS PROPRIETARY TO MOLEX INCORPORATED AND SHOULD NOT BE USED WITHOUT WRITTEN PERMISSION																		
			SIZE C																				



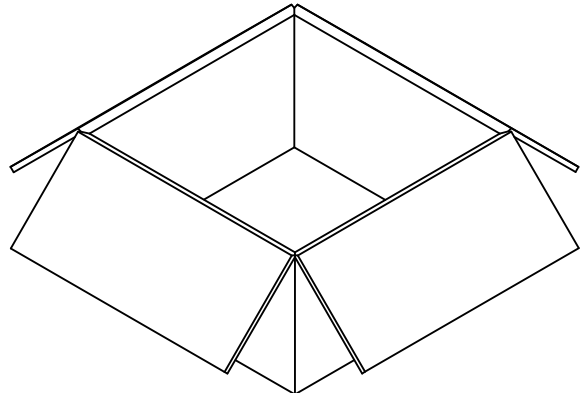
P/N 73415-286X



54 SET PER TRAY
TRAY P/N 89707-0220
361mmX169mmX18.5mm



540 SET PER INNER
CARTON BOX
P/N 96707-0001
367mmX173mmX188mm



1080 SET PER OUTER
CARTON BOX
P/N 96708-0005
385mmX367mmX206mm

SEE SHEET 1 IEC NO: URF2014-0486 2014/02/25 DRWNLIN CHKD: APPR:MHUANG 2014/02/27	QUALITY SYMBOLS = 0 = 0	GENERAL TOLERANCES (UNLESS SPECIFIED)		DIMENSION STYLE MM/IN		SCALE	DESIGN UNITS METRIC	THIRD ANGLE PROJECTION																														
		<table border="1"> <thead> <tr> <th></th> <th>mm</th> <th>INCH</th> </tr> </thead> <tbody> <tr> <td>4 PLACES</td> <td>± .008</td> <td>± .0003</td> </tr> <tr> <td>3 PLACES</td> <td>± .010</td> <td>± .0004</td> </tr> <tr> <td>2 PLACES</td> <td>± .015</td> <td>± .0006</td> </tr> <tr> <td>1 PLACE</td> <td>± .020</td> <td>± .0008</td> </tr> </tbody> </table>		mm	INCH	4 PLACES	± .008	± .0003	3 PLACES	± .010	± .0004	2 PLACES	± .015	± .0006	1 PLACE	± .020	± .0008	<table border="1"> <thead> <tr> <th>DRAWN BY</th> <th>DATE</th> </tr> </thead> <tbody> <tr> <td>SSS</td> <td>2001/02/28</td> </tr> <tr> <th>CHECKED BY</th> <th>DATE</th> </tr> <tr> <td>TEF</td> <td>2001/02/28</td> </tr> <tr> <th>APPROVED BY</th> <th>DATE</th> </tr> <tr> <td>MHUANG</td> <td>2010/04/26</td> </tr> </tbody> </table>	DRAWN BY	DATE	SSS	2001/02/28	CHECKED BY	DATE	TEF	2001/02/28	APPROVED BY	DATE	MHUANG	2010/04/26	TITLE SMB JACK, R/A, FAKRA KINKED TAIL, 50 OHMS SMB-J/PCB		MOLEX INCORPORATED		DOCUMENT NO. SD-73415-286		SHEET NO. 3 OF 3	
		mm	INCH																																			
	4 PLACES	± .008	± .0003																																			
3 PLACES	± .010	± .0004																																				
2 PLACES	± .015	± .0006																																				
1 PLACE	± .020	± .0008																																				
DRAWN BY	DATE																																					
SSS	2001/02/28																																					
CHECKED BY	DATE																																					
TEF	2001/02/28																																					
APPROVED BY	DATE																																					
MHUANG	2010/04/26																																					
DRAFT WHERE APPLICABLE MUST REMAIN WITHIN DIMENSIONS	ANGULAR ± 2 °		SEE SHEET 2		THIS DRAWING CONTAINS INFORMATION THAT IS PROPRIETARY TO MOLEX INCORPORATED AND SHOULD NOT BE USED WITHOUT WRITTEN PERMISSION																																	