

Two-hand operation console for command devices, 22 mm, round, Enclosure material metal, enclosure top part gray, 3 control points metal, 4 additional drilled holes for 22 mm command devices 2 mushroom pushbuttons black 40 mm, 2x1NO+1NC, screw terminal, 1 EMERGENCY STOP red, 40 mm, 2 NC, screw terminal, Front mounting, with cable cut-outs for metric screw connections



| | |
|--|--|
| product brand name | SIRIUS ACT |
| product designation | Two-hand operation console |
| product type designation | 3SU1 |
| manufacturer's article number | |
| <ul style="list-style-type: none"> of supplied contact module of supplied contact module at the command point A 1 of supplied contact module at the command point A 3 of supplied contact module at the command point B 1 of supplied contact module at the command point B 3 of supplied contact module at the command point C 1 of supplied contact module at the command point C 3 of the supplied holder at the command point A of the supplied holder at the command point B of the supplied holder at the command point C of the supplied actuator at the command point A of the supplied actuator at the command point B of the supplied actuator at the command point C of supplied empty enclosure of supplied accessory of the supplied accessories at the command point B | <p>R2 = 3SU1400-1AA10-1BA0 / L2 = 3SU1400-1AA10-1BA0 / M1 = 3SU1400-1AA10-1CA0 / R1 = 3SU1400-1AA10-1CA0 / L1 = 3SU1400-1AA10-1CA0 / M2 = 3SU1400-1AA10-1CA0</p> <p>3SU1400-1AA10-1CA0</p> <p>3SU1400-1AA10-1BA0</p> <p>3SU1400-1AA10-1CA0</p> <p>3SU1400-1AA10-1CA0</p> <p>3SU1400-1AA10-1CA0</p> <p>3SU1400-1AA10-1BA0</p> <p>3SU1550-0AA10-0AA0</p> <p>3SU1550-0AA10-0AA0</p> <p>3SU1550-0AA10-0AA0</p> <p>3SU1050-1BD10-0AA0</p> <p>3SU1050-1HB20-0AA0</p> <p>3SU1050-1BD10-0AA0</p> <p>3SU1853-3AA00-0AA1</p> <p>3SU1950-0FA80-0AA0</p> <p>3SU1900-0BB31-0AT0</p> |
| Enclosure | |
| design of the housing | Two-hand operating console with standard components |
| material of the enclosure | metal |
| number of command points | 3 |
| color of the enclosure top part | grey |
| delivery state | |
| <ul style="list-style-type: none"> as a kit pre-wired on strip terminal | <p>No</p> <p>No</p> |
| fastening method of the enclosure | Horizontal |
| Actuator | |
| design of the actuating element | A = mushroom pushbutton / B = EMERGENCY STOP mushroom pushbutton / C = mushroom pushbutton |
| principle of operation of the actuating element | A = momentary contact / B = latching / C = momentary contact |
| product feature | |
| <ul style="list-style-type: none"> lockout staggered switching | <p>No</p> <p>No</p> |
| color of the actuating element | A = black / B = red / C = black |
| material of the actuating element | metal |
| shape of the actuating element | round |

| | |
|--|---|
| number of contact modules | 6 |
| type of unlocking device | A = none / B = rotate to unlock / C = none |
| Front ring | |
| product component front ring | Yes |
| material of the front ring | metal |
| color of the front ring | silver |
| Holder | |
| material of the holder | Metal |
| General technical data | |
| product function | |
| • positive opening | Yes |
| • EMERGENCY OFF function | Yes |
| • EMERGENCY STOP function | Yes |
| product component stand/pedestal | No |
| protection class IP | IP66 |
| degree of protection NEMA rating | 1, 2, 3, 3R, 4, 4X, 12, 13 |
| shock resistance according to IEC 60068-2-27 | sinusoidal half-wave 15g / 11 ms |
| vibration resistance according to IEC 60068-2-6 | 10 ... 500 Hz: 5g |
| reference code according to IEC 81346-2 | S |
| continuous current of the C characteristic MCB | 10 A; for a short-circuit current smaller than 400 A |
| continuous current of the quick DIAZED fuse link | 10 A |
| continuous current of the DIAZED fuse link gG | 10 A |
| Substance Prohibitance (Date) | 10/01/2014 |
| Auxiliary circuit | |
| design of the contact of auxiliary contacts | Silver alloy |
| number of NC contacts for auxiliary contacts | 4 |
| number of NO contacts for auxiliary contacts | 2 |
| Connections/ Terminals | |
| type of electrical connection on enclosure | Cable routing at the rear 2 x M25 |
| Safety related data | |
| B10 value with high demand rate according to SN 31920 | 100 000 |
| proportion of dangerous failures | |
| • with low demand rate according to SN 31920 | 20 % |
| • with high demand rate according to SN 31920 | 20 % |
| failure rate [FIT] with low demand rate according to SN 31920 | 100 FIT |
| Ambient conditions | |
| ambient temperature | |
| • during operation | -25 ... +70 °C |
| • during storage | -40 ... +80 °C |
| environmental category during operation according to IEC 60721 | 3M6, 3S2, 3B2, 3C3, 3K6 (with relative air humidity of 10 ... 95%, no condensation in operation permitted for all devices behind front panel) |
| Installation/ mounting/ dimensions | |
| fastening method of modules and accessories | Front plate mounting |
| height | 185.6 mm |
| width | 492.4 mm |
| depth | 159.5 mm |
| Accessories | |
| number of backing plates | 1 |
| marking of backing plate | EMERGENCY-STOP |
| color of backing plate | Yellow |
| Certificates/ approvals | |
| General Product Approval | Declaration of Conformity |

[Confirmation](#)



Declaration of Conformity

Test Certificates

Marine / Shipping



[Special Test Certificate](#)

[Type Test Certificates/Test Report](#)



Marine / Shipping

other

Environment



[Confirmation](#)

[Environmental Confirmations](#)

Further information

Siemens has decided to exit the Russian market (see here).

<https://press.siemens.com/global/en/pressrelease/siemens-wind-down-russian-business>

Siemens is working on the renewal of the current EAC certificates.

Please contact your local Siemens office on the status of validity of the EAC certification if you intend to import or offer to supply these products to an EAC relevant market (other than the sanctioned EAEU member states Russia or Belarus).

Information on the packaging

<https://support.industry.siemens.com/cs/ww/en/view/109813875>

Information- and Downloadcenter (Catalogs, Brochures,...)

<https://www.siemens.com/ic10>

Industry Mall (Online ordering system)

<https://mall.industry.siemens.com/mall/en/en/Catalog/product?mlfb=3SU1853-3NB00-1AD1>

Cax online generator

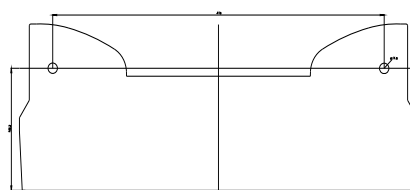
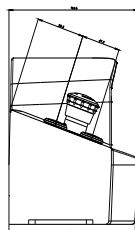
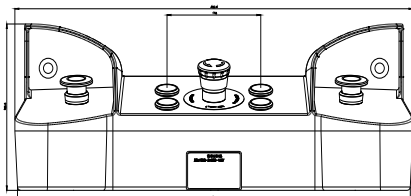
<http://support.automation.siemens.com/WW/CAXorder/default.aspx?lang=en&mlfb=3SU1853-3NB00-1AD1>

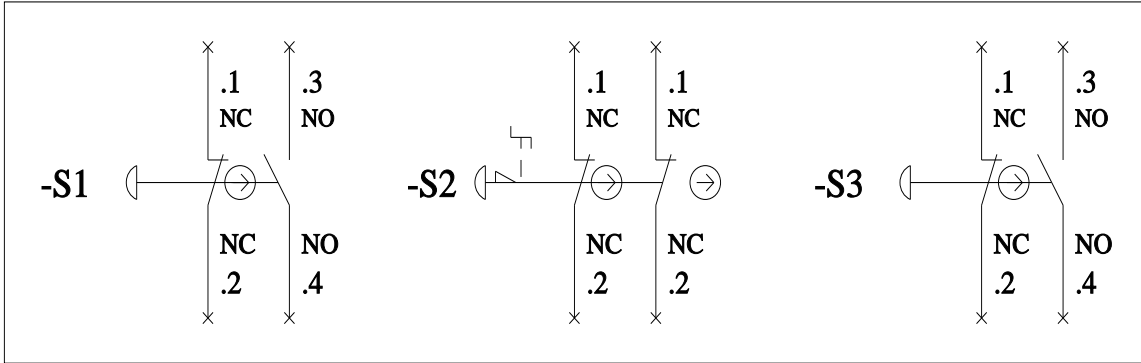
Service&Support (Manuals, Certificates, Characteristics, FAQs,...)

<https://support.industry.siemens.com/cs/ww/en/ps/3SU1853-3NB00-1AD1>

Image database (product images, 2D dimension drawings, 3D models, device circuit diagrams, EPLAN macros, ...)

http://www.automation.siemens.com/bilddb/cax_de.aspx?mlfb=3SU1853-3NB00-1AD1&lang=en





last modified:

1/26/2022