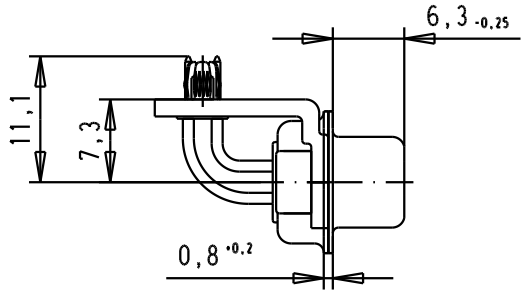
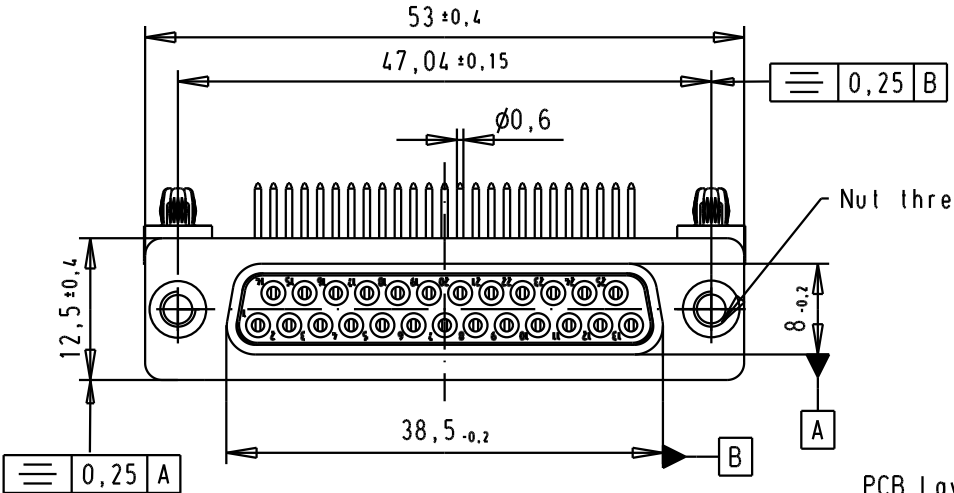


5 4 3 2 1

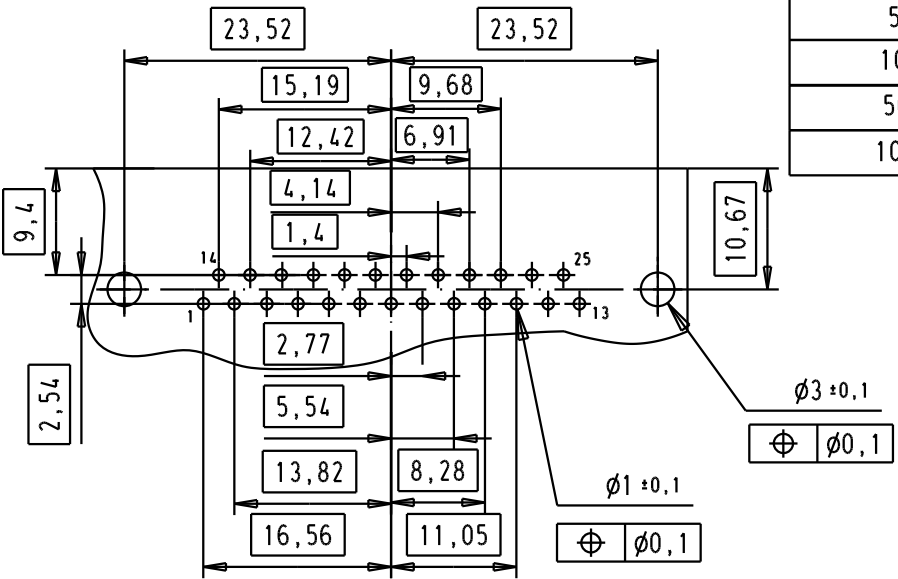
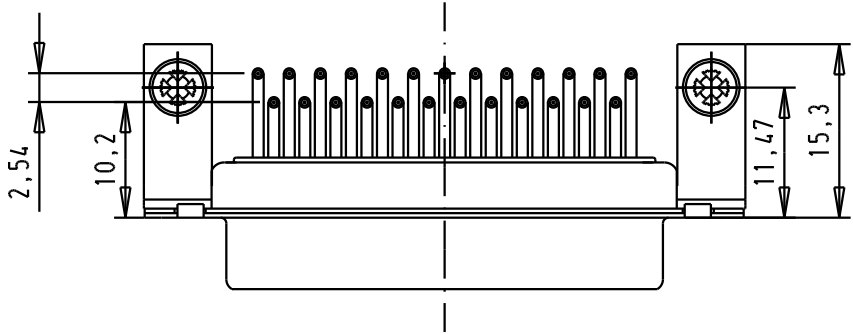
SPECIFICATION

Mating Cycles	500
Filter type	C
Capacitance	470pf ± 20%
Working Voltage	100v
Current Rating	7.5A
Insulation Resistance	>1GΩ

FREQUENCY (MHz)	ATTENUATION (dB)
5	-
10	1dB
50	10dB
100	15dB
500	35dB
1000	32dB



PCB Layout, Component side, thickness 1,6 mm



09643147223	M3
09643147222	UNC 4-40
Part number	Nut thread

				Dat.	Name
			Detail.	8-JUL-02	CV
			Insp.		
33416	19/01/06	JMDR	Stand.		
32137	16/08/04	TR			
31058	8-JUL-02	CV			
Mod.	Dat.	Name			



D-Sub, female, angled, 25 Poles, turned solder pins, tin plated shell with brackets, board-locks and clinch nuts

Ma?Ms Lab/Scale

1.5:1

HARTING EURL
F-95972 Paris



TB 0964314722x

Blatt/ Page

1 / 4

Sub.