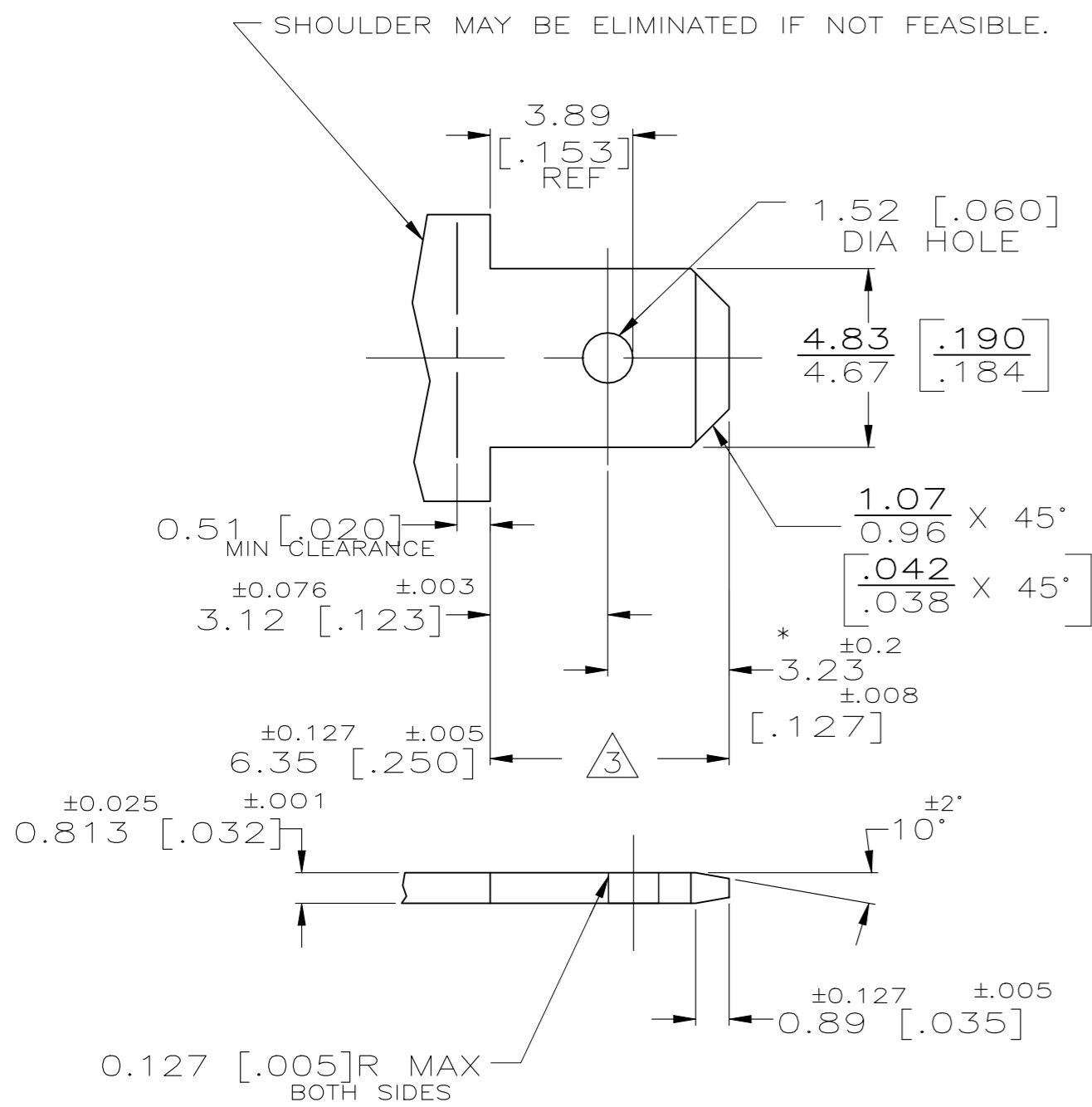
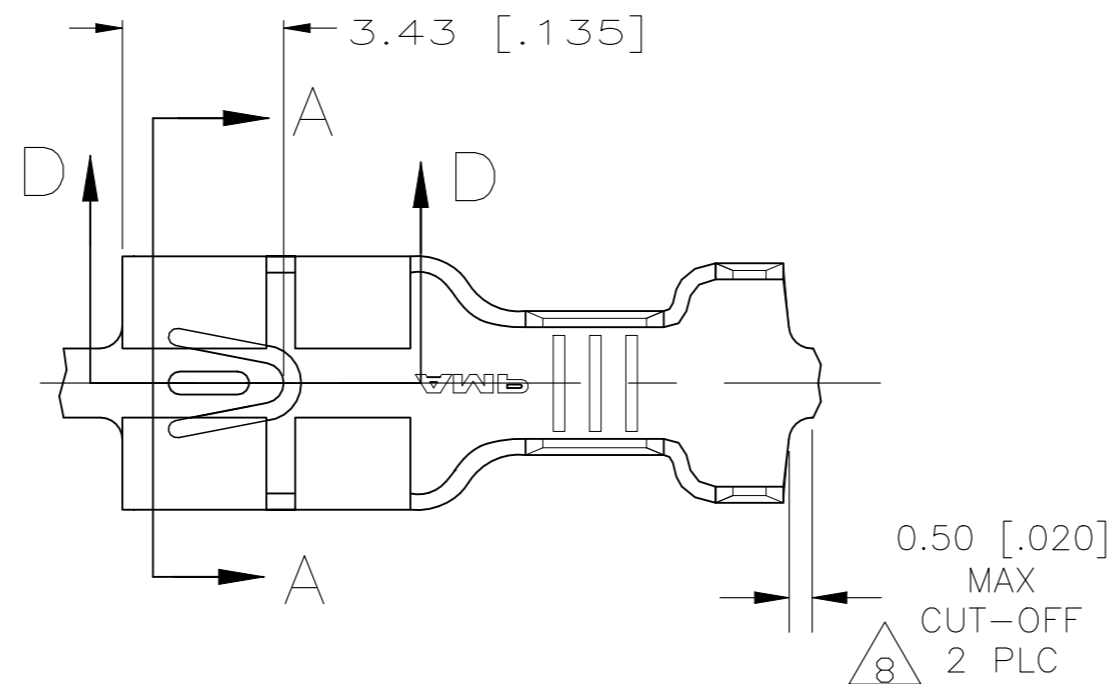


REVISIONS					
P	LTR	DESCRIPTION	DATE	DWN	APVD
M8		REVISED PER ECR-19-018140	23DEC2020	SS	EW

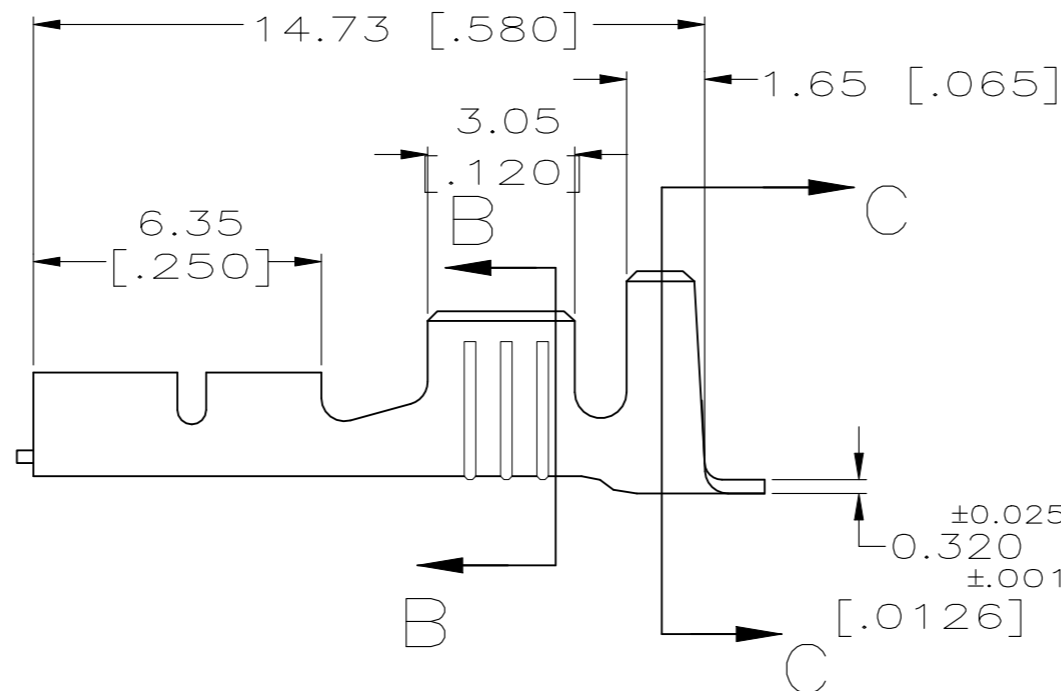
SUGGESTED MATING TAB



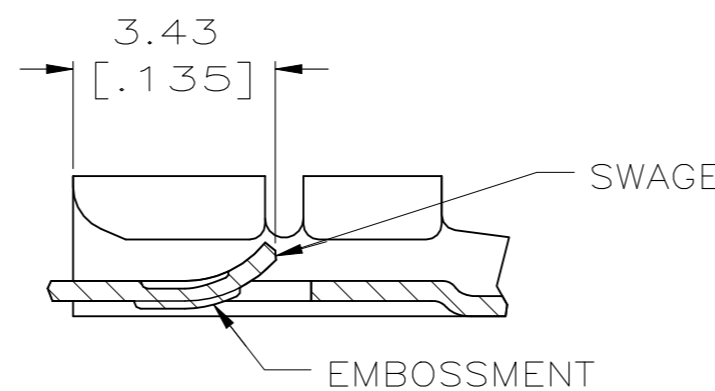
- 1 - MATL: 1/2H BRASS OR NICKEL PL STEEL.
- 2 - NO BURRS PERMISSIBLE AT HOLE.
- 3 - MUST BE FLAT WITHIN 0.076 [.003] OVER THIS LENGTH.
- 4 - HOLE MUST BE SYMMETRICAL ABOUT TAB Q̄ WITHIN 0.076 [.003]
- * TO BE USED ONLY WHEN SHOULDER IS ELIMINATED.



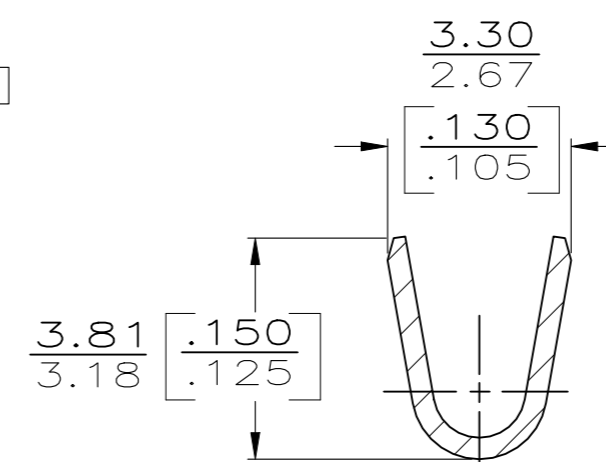
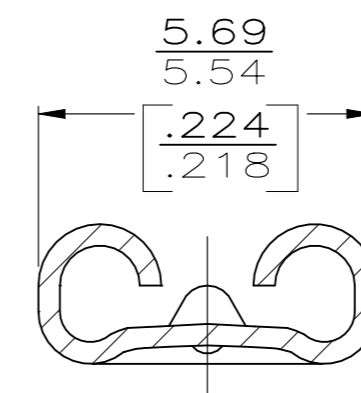
SECTION A-A
SCALE 8:1



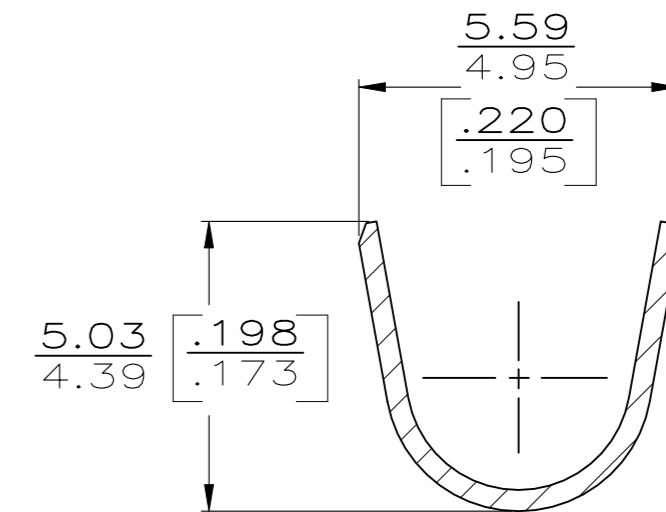
SECTION B-B
SCALE 8:1



SECTION D-D
SCALE 8:1



- 1 CONTINUOUS STRIP ON REELS
- 2 TIN PL 0.002032 [.000080] MIN THK PER MIL-T-10727A
- 3 63606-1 SOLD TO FORD WITH FORD'S P/N ON REELING LABEL.
- 4 SPECIAL PACKAGING
- 5 WIRE SIZE IS 0.8-2.0MM² [18-14] AWG
- 6 INSULATION RANGE IS 4.09-4.98 [.161-.196] DIA.
- 7 FOR LOOSE PIECE PARTS ONLY
- 8 PRE-TIN PLATED
- 9 PREPRODUCTION- FASR REQUIRED
- 10 OBSOLETE



SECTION C-C
SCALE 8:1

10	7	LOOSE PIECE	8	BRASS	9-1-63606-6
10	7	LOOSE PIECE	---	BRASS	9-1-63606-5
7	7	LOOSE PIECE	2	BRASS	9-1-63606-4
			8	BRASS	9-63606-6
			---	BRASS	63606-5
			2	BRASS	63606-4
			2	#4 PHOS BRONZE	4-63606-3
			---		63606-2
			---		63606-1
		F2DU14474AA			
		FORD P/N	FINISH	MATERIAL	PART NO.

TYPE	WIDTH	STRIP LENGTH	TYPE	WIDTH	WIRE HEIGHT	WIRE
F	4.57 [.180]	4.78 [.188]	F	2.29 [.090]	1.85 [.073]	2.0mm ² [14]
					1.57 [.062]	1.3mm ² [16]
					1.40 [.055]	0.8mm ² [18]
					±0.051 [±.002]	
INSUL BARREL CRIMP		±0.38 [±.015]	WIRE BARREL CRIMP			

THIS DRAWING IS A CONTROLLED DOCUMENT.		DWN	JR RUTH	2/25/91
DIMENSIONS: MM [INCHES]		CHK	MS FEHER	2/25/91
TOLERANCES UNLESS OTHERWISE SPECIFIED:		APVD	J GILLESPIE	2/25/91
0 PLC	± -	PRODUCT SPEC		
1 PLC	± -	APPLICATION SPEC		
2 PLC	± -			
3 PLC	± 0.25 [.010]			
4 PLC	± -			
ANGLES	± -			
MATERIAL	SEE TABLE	FINISH	SEE TABLE	WEIGHT
				0.000000
				CUSTOMER DRAWING
				SCALE
				6:1
				SHEET
				1 OF 1
				REV
				M8