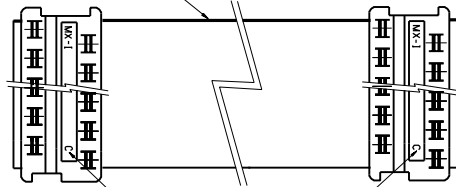
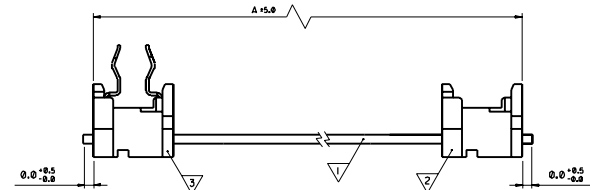


CIRCUIT IDENTIFICATION

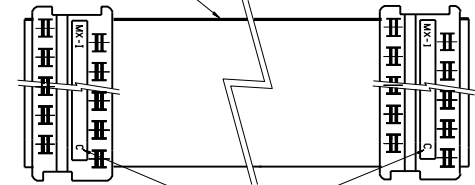


C CIRCUIT SIZE

| MATERIAL NUMBER | ITEM | COMPONENT | DESCRIPTION | QUANTITY | A | C | NOTE |
|----------------------------|------|------------|--|----------|-------|-------|---------|
| 92301-0018 | ▽ | 99026-0024 | 4 CKT 28 AWG STRANDED TINNED RIBBON CABLE | 1 | 350.0 | 4 CCT | 4, 5 |
| CUSTOMER REF NO OM 1036 | ▽ | 90584-2304 | PICOFLEX BOARD-IN IDT CONNECTOR | 2 | | | 4, 3, 5 |



CIRCUIT IDENTIFICATION



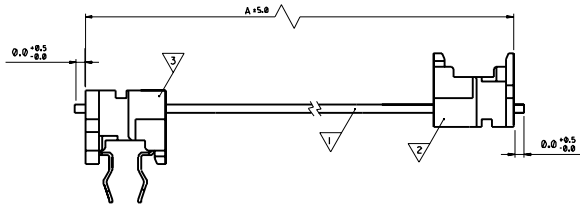
C CIRCUIT SIZE

| MATERIAL NUMBER | ITEM | COMPONENT | DESCRIPTION | QUANTITY | A | C | NOTE |
|----------------------------|------|------------|---|----------|-------|--------|---------|
| 92301-0016 | ▽ | 99026-0025 | 10 CKT 28 AWG STRANDED TINNED RIBBON CABLE | 1 | 120.0 | 10 CCT | 4, 5 |
| CUSTOMER REF NO OM 1034 | ▽ | 90327-0365 | PICOFLEX IDT CONNECTOR | 1 | | | 4, 2, 5 |
| | ▽ | 90584-2310 | PICOFLEX BOARD-IN IDT CONNECTOR | 1 | | | 4, 3, 5 |

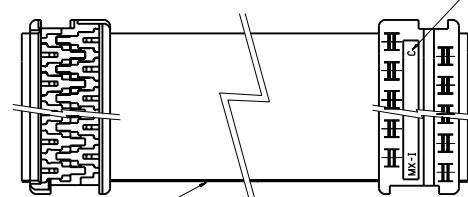
| MATERIAL NUMBER | ITEM | COMPONENT | DESCRIPTION | QUANTITY | A | C | NOTE |
|----------------------------|------|------------|--|----------|-------|-------|---------|
| 92301-0017 | ▽ | 99026-0024 | 4 CKT 28 AWG STRANDED TINNED RIBBON CABLE | 1 | 120.0 | 4 CCT | 4, 5 |
| CUSTOMER REF NO OM 1035 | ▽ | 90327-0354 | PICOFLEX IDT CONNECTOR | 1 | | | 4, 2, 5 |
| | ▽ | 90584-2304 | PICOFLEX BOARD-IN IDT CONNECTOR | 1 | | | 4, 3, 5 |

| MATERIAL NUMBER | ITEM | COMPONENT | DESCRIPTION | QUANTITY | A | C | NOTE |
|----------------------------|------|------------|---|----------|-------|--------|---------|
| 92301-0025 | ▽ | 99026-0003 | 12 CKT 28 AWG STRANDED TINNED RIBBON CABLE | 1 | 250.0 | 12 CCT | 4, 5 |
| CUSTOMER REF NO OM 1038 | ▽ | 90327-0369 | PICOFLEX IDT CONNECTOR | 1 | | | 4, 2, 5 |
| | ▽ | 90584-2312 | PICOFLEX BOARD-IN IDT CONNECTOR | 1 | | | 4, 3, 5 |

| MATERIAL NUMBER | ITEM | COMPONENT | DESCRIPTION | QUANTITY | A | C | NOTE |
|----------------------------|------|------------|---|----------|-------|--------|---------|
| 92301-0026 | ▽ | 99026-0002 | 20 CKT 28 AWG STRANDED TINNED RIBBON CABLE | 1 | 200.0 | 20 CCT | 4, 5 |
| CUSTOMER REF NO OM 1039 | ▽ | 90327-0395 | PICOFLEX IDT CONNECTOR | 1 | | | 4, 2, 5 |
| | ▽ | 90584-2320 | PICOFLEX BOARD-IN IDT CONNECTOR | 1 | | | 4, 3, 5 |



CIRCUIT SIZE



CIRCUIT IDENTIFICATION

| MATERIAL NUMBER | ITEM | COMPONENT | DESCRIPTION | QUANTITY | A | C | NOTE |
|----------------------------|------|------------|---|----------|-------|--------|---------|
| 92301-0019 | ▽ | 99026-0001 | 16 CKT 28 AWG STRANDED TINNED RIBBON CABLE | 1 | 650.0 | 16 CCT | 4, 5 |
| CUSTOMER REF NO OM 1037 | ▽ | 90327-0377 | PICOFLEX IDT CONNECTOR | 1 | | | 4, 2, 5 |
| | ▽ | 90584-2316 | PICOFLEX BOARD-IN IDT CONNECTOR | 1 | | | 4, 3, 5 |
| MATERIAL NUMBER | ITEM | COMPONENT | DESCRIPTION | QUANTITY | A | C | NOTE |
| 92301-0034 | ▽ | 99026-0025 | 10 CKT 28 AWG STRANDED TINNED RIBBON CABLE | 1 | 510.0 | 10 CCT | 4, 5 |
| CUSTOMER REF NO OM 1040 | ▽ | 90327-0365 | PICOFLEX IDT CONNECTOR | 1 | | | 4, 2, 5 |
| | ▽ | 90584-2310 | PICOFLEX BOARD-IN IDT CONNECTOR | 1 | | | 4, 3, 5 |

NOTES:

- SEE PRODUCT SPECIFICATIONS PS-99020-0011.
- SEE TERMINATION SPECIFICATION ES-99033-0001.
- SEE TERMINATION SPECIFICATION ES-99033-0002.
- SEE CABLE SPECIFICATION ES-99027-0006.
- HARNESSES TO BE 100% ELECTRICALLY TESTED.

| | | | | | | |
|--|--|---|--|--|--|----------------------------|
| POLAR MOD EC NO. E80136 DRAWN:AMC CHK: APPR: REV: | QUALITY SYMBOLS MAJOR = CRITICAL = C = | GENERAL TOLERANCES UNLESS SPECIFIED: mm INCH 4 PLACES ±0.1 ±. 3 PLACES ±0.1 ±. 2 PLACES ±0.1 ±. 1 PLACE ±0.1 ±. ANGULAR: ± 1/2° | SCALE 2:1 DESIGN UNITS mm INCH DRAWN BY & DATE AMC 9/7/23 CHECKED BY & DATE M.Curran 9/7/23 APPROVED BY & DATE M.W. 9/7/23 | DIMENSIONS: mm INCH THIRD ANGLE PROJECTION | SHT REV REVISE ON CAD ONLY | |
| | TITLE: PICOFLEX HARNESS (VARIOUS CIRCUIT SIZE) | | | | | |
| | CAD FILENAME: s9230119.DGN DRAFT WHERE APPLICABLE MUST REMAIN WITHIN DIMENSIONS | | | | MOLEX INCORPORATED MATERIAL NO. SEE CHART DRAWING NO. SD-92301-019 | SHEET NO. 1 OF 1 SIZE D |
| | THIS DRAWING CONTAINS INFORMATION THAT IS PROPRIETARY TO MOLEX INCORPORATED AND SHOULD NOT BE USED WITHOUT WRITTEN PERMISSION. | | | | | |