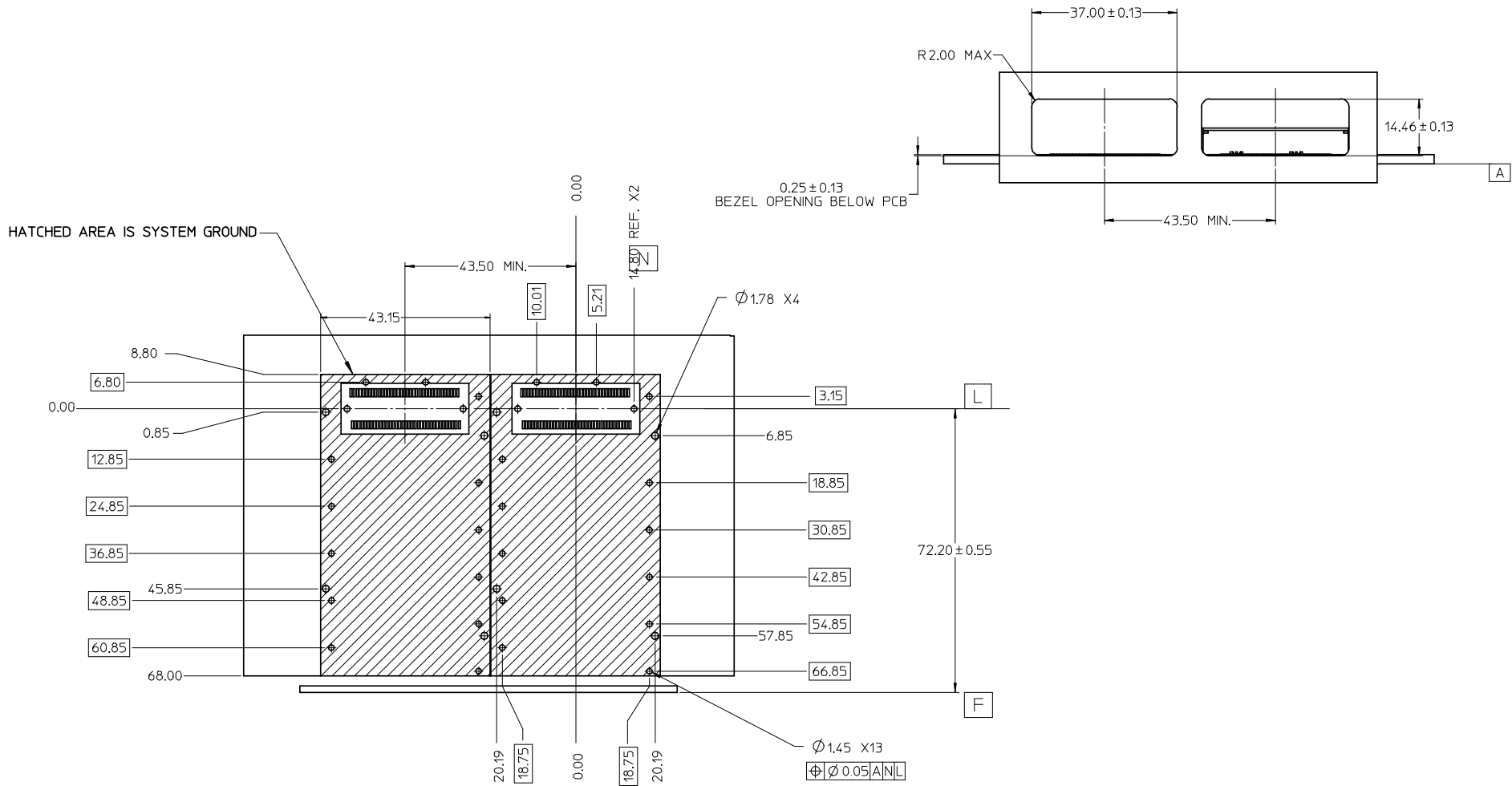


SECTION A-A

1. MATERIAL: NICKEL PLATED ZINC ALLOY
2. FOR USE WITH HASL. GOLD OR SILVER IMMERSION FINISHED PTH.
3. COSMETIC SPECIFICATION: MOLEX WI-HP-7-2774, CLASS B UNLESS NOTED OTHERWISE.
4. GUIDE PINS DESIGNED TO LIGHTLY PRESS INTO THE PCB BY HAND AND ASSIST WITH SCREW INSTALLATION. PIN STRAIGHTNESS IS NOT CRITICAL.
5. SCREW MATERIAL TO BE 18-8 STAINLESS STEEL OR HARDER.
6. MAX TORQUE 1.5 IN/LB.
7. THIS PRODUCT MEETS THE RESTRICTION OF HAZARDOUS SUBSTANCES IN ELECTRICAL AND ELECTRONIC EQUIPMENT (RoHS) DIRECTIVE (2002/95/EC).

ADDED NEW GASKET EC NO: USY2008-0292 DRAWN: COX CHKD: APPR: MONROE 2008/01/28 2008/02/04 2008/02/11	QUALITY SYMBOLS	GENERAL TOLERANCES (UNLESS SPECIFIED)	DIMENSION STYLE	SCALE	DESIGN UNITS	THIRD ANGLE PROJECTION
	▼=0 ▽=0	mm INCH 4 PLACES ± --- ± --- 3 PLACES ± --- ± --- 2 PLACES ± 0.10 ± --- 1 PLACE ± 0.25 ± --- ANGULAR ± 1/2°	MM ONLY	3:1	METRIC	DRAWN BY DATE C. COX 2006/03/29 CHECKED BY DATE K. LLOYD APPROVED BY DATE B. RUSSELL
	DRAFT WHERE APPLICABLE MUST REMAIN WITHIN DIMENSIONS	MATERIAL NO.	DOCUMENT NO.	TITLE X2 GUIDE RAIL ASSEMBLY NO SIDE CLEARANCE		
	SIZE D	747440220	SD-74744-220	MOLEX MOLEX INCORPORATED SHEET NO. 1 OF 3		



- SEE DRAWING SD-74441-001 FOR HOST CONNECTOR LAYOUT DETAIL.
- PLATED HOLES CAN BE HASL, GOLD OR SILVER IMMERSION.
- PCB LAYOUT IS SHOWN FOR SINGLE SIDED MOUNTING.
BELLY TO BELLY MOUNTING REQUIRES ABOVE LAYOUT PLACED ON OPPOSITE SIDE OF THE PCB. THE SECONDARY BEZEL OPENING MUST ACCOMODATE THE PCB THICKNESS VARIATION.
- MINIMUM PCB THICKNESS FOR BELLY TO BELLY IS 5.0mm.
- LAYOUT SHOWN HAS PATTERN FOR TWO ADJACENT HOUSINGS LOCATED AT MINIMUM SPACING.

ADDED NEW GASKET EEC NO: USY2008-0292 DRAWN: COX CHKD: 2008/02/04 APPR: KRONDE 2008/02/11 REV:	QUALITY SYMBOLS	GENERAL TOLERANCES (UNLESS SPECIFIED)	DIMENSION STYLE	SCALE	DESIGN UNITS	THIRD ANGLE PROJECTION	
	▼=0 ▽=0	mm INCH 4 PLACES ±--- ±--- 3 PLACES ±--- ±--- 2 PLACES ±0.10 ±--- 1 PLACE ±0.25 ±--- ANGULAR ±1/2°	MM ONLY	3:1	METRIC	DRAWN BY DATE C. COX 2006/03/29 CHECKED BY DATE K. LLOYD APPROVED BY DATE B. RUSSELL	
	DRAFT WHERE APPLICABLE MUST REMAIN WITHIN DIMENSIONS		MATERIAL NO.	DOCUMENT NO.	TITLE		MOLEX INCORPORATED X2 GUIDE RAIL ASSEMBLY NO SIDE CLEARANCE
			747440220	SD-74744-220	SHEET NO. 2 OF 3		

20 | 19 | 18 | 17 | 16 | 15 | 14 | 13 | 12 | 11 | 10 | 9 | 8 | 7 | 6 | 5 | 4 | 3 | 2 | 1

DATE	REV	CHANGES
2008/01/17	H	[1] ADDED REVISION SHEET; [2] ADDED 74744-260-INST REV B & 74744-260 REV F TO ASSEMBLY.

ADDED NEW GASKET EC NO: USY2008-0292 DRAWN BY: C. COX CHYD: 2008/02/04 APPR: KMONDE 2008/02/11	QUALITY SYMBOLS = 0 = 0	GENERAL TOLERANCES (UNLESS SPECIFIED)		DIMENSION STYLE MM ONLY	SCALE 1:1	DESIGN UNITS METRIC	THIRD ANGLE PROJECTION	
		4 PLACES ± .00 ± .00 3 PLACES ± .00 ± .00 2 PLACES ± 0.10 ± .00 1 PLACE ± 0.25 ± .00 ANGULAR ± 1/2°	mm INCH	DRAWN BY: C. COX DATE: 2006/03/29 CHECKED BY: K. LLOYD DATE: APPROVED BY: B. RUSSELL DATE:	TITLE X2 GUIDE RAIL ASSEMBLY NO SIDE CLEARANCE			
DRAFT WHERE APPLICABLE MUST REMAIN WITHIN DIMENSIONS		MATERIAL NO. 747440220		MOLEX INCORPORATED DOCUMENT NO. SD-74744-220				SHEET NO. 3 OF 3

19 | 18 | 17 | 16 | 15 | 14 | 13 | 12 | 11 | 10 | 9 | 8 | 7 | 6 | 5 | 4 | 3 | 2 | 1