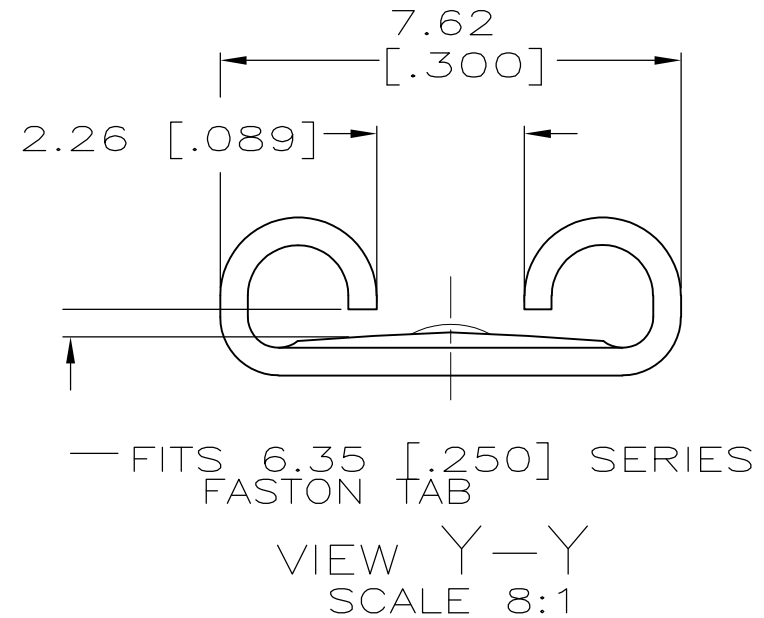
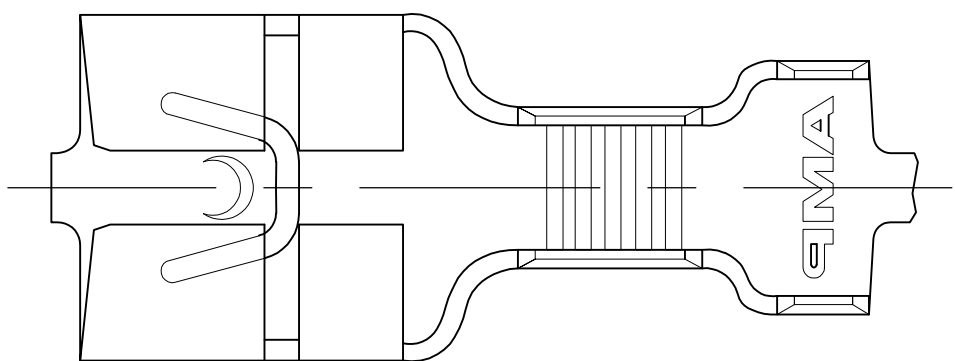
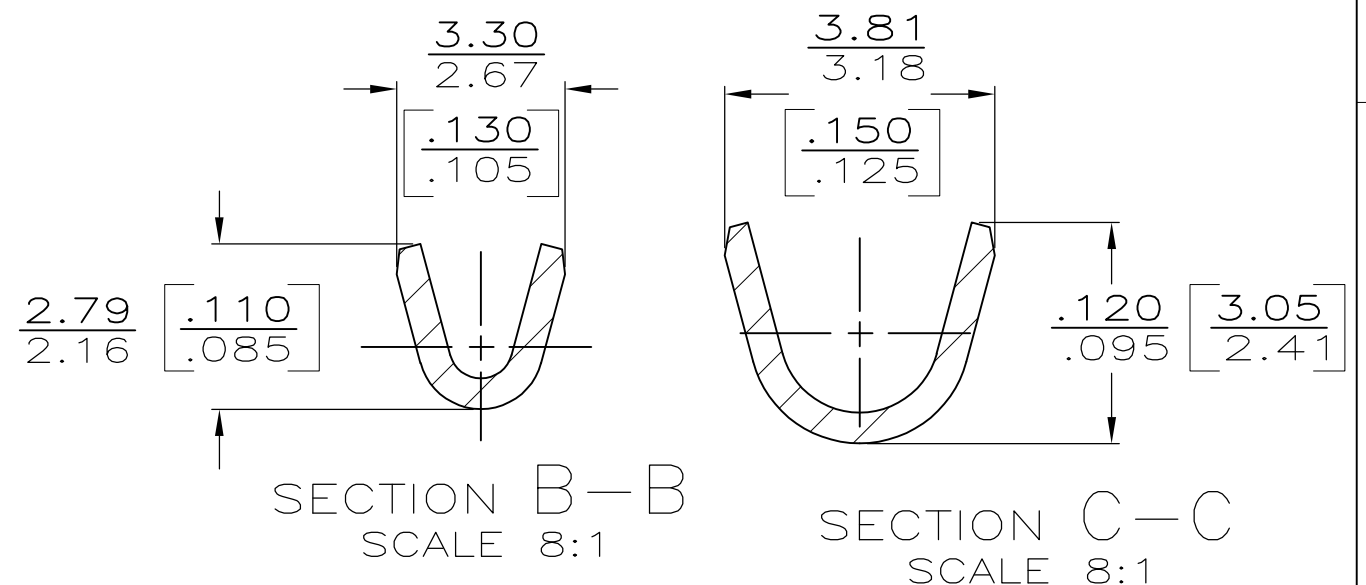
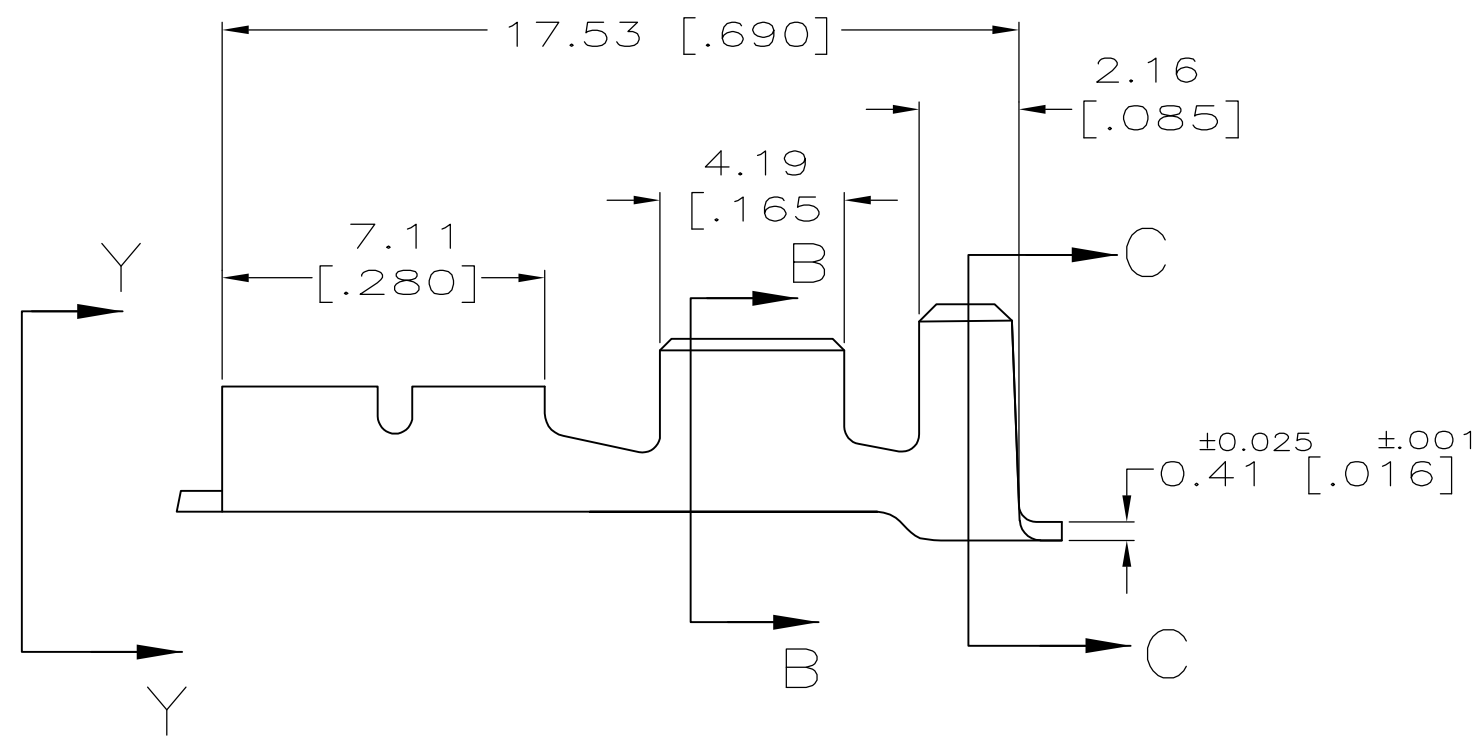


THIS DRAWING IS UNPUBLISHED. RELEASED FOR PUBLICATION
 © COPYRIGHT - By TYCO ELECTRONICS CORPORATION. ALL RIGHTS RESERVED.

LOC	DIST	REVISIONS					
AF	50	P	LTR	DESCRIPTION	DATE	DWN	APVD
		D		REVISE PER ECR-13-013738	15FEB2014	GRZ	JL



- CONTINUOUS STRIP ON REELS
- MATING TAB THK TO BE 0.51±0.025 [.020±.001].
- WIRE SIZE IS #24-#19 MAGNET WIRE.
- INSULATION RANGE IS 1.27-2.03 [.050-.080] DIA.



0.002032 [.000080] MIN TIN	63623-2
-	63623-1
FINISH	PART NUMBER

F	2.79 [.110]	F	2.29 [.090]	1.19 [.047]	0.6mm ² [19]
				1.14 [.045]	0.5mm ² [20]
				1.07 [.042]	0.3mm ² [22]
				1.04 [.041]	0.2mm ² [24]
TYPE	WIDTH	TYPE	WIDTH	±.002 HEIGHT	WIRE
INSUL BARREL CRIMP		WIRE BARREL CRIMP			

THIS DRAWING IS A CONTROLLED DOCUMENT.	
DIMENSIONS: INCHES	TOLERANCES UNLESS OTHERWISE SPECIFIED:
	0 PLC ± -
	1 PLC ± -
	2 PLC ± -
	3 PLC ± 0.25 [.010]
	4 PLC ± -
	ANGLES ± -
MATERIAL: H04 BRASS	FINISH: SEE TABLE

DWN	JR RUTH	8/23/91
CHK	MS FEHER	8/23/91
APVD	C MEYERS	8/23/91
PRODUCT SPEC	R KUZO	8/23/91
APPLICATION SPEC		
WEIGHT	-	

STE TE Connectivity

RECEPTACLE, FASTON, L.I.F., AMPLIVAR, 6.35 [.250] SERIES

SIZE	CAGE CODE	DRAWING NO	RESTRICTED TO
A3	00779	C-63623	-

CUSTOMER DRAWING SCALE 6:1 SHEET 1 OF 1 REV D