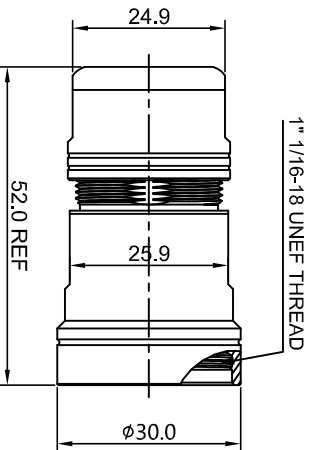
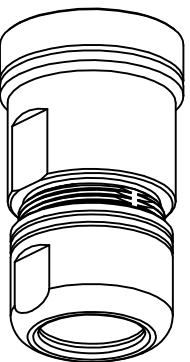
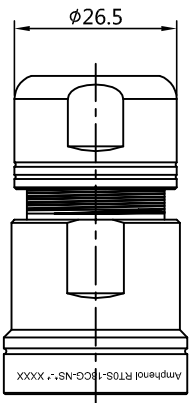
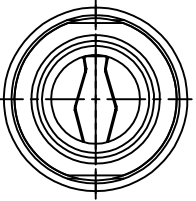


REVISIONS				
REV	ECO	DESCRIPTION	DATE	BY APPR
B1	-	RELEASED DRAWING	NOV-01-2017	FLAN TOMMY



P/N	CABLE O.D.
RTOS-18CG-NS1-*	Ø10.0-Ø14.0mm
RTOS-18CG-NS2-*	Ø13.5-Ø17.0mm

- NOTES : (UNLESS OTHERWISE SPECIFIED)
1. MATERIAL :
- 1.1. NUT : ZINC ALLOY.
 - 1.2. BACK SHELL : ZINC ALLOY.
 - 1.3. O-RING: SILICONE RUBBER.
 - 1.4. CABLE SEAL : EPDM.
 - 1.5 EMI SHIELDING RING : STAINLESS STEEL.
 - 1.6 CLAMP INSERT : THERMOPLASTIC UL94 V-0.
2. ROHS COMPLIANT.
3. ALL DIMENSIONS ARE FOR REFERENCE USE ONLY.
4. SHELL FINISHED:

P/N	** **	SHELL FINISHED
	OMIT	PLATED NICKLE
RTOS-18CG-NS**	Z	BLACK ZINC
	G	GREEN ZINC

QUANTITY	PART NUMBER	DESCRIPTION	ITEM
MATERIALS LIST			
UNLESS OTHERWISE SPECIFIED 1) All dimensions are in millimeters. 2) Tolerances are as follows: 1 Pl. DEC ±0.30 Fractions ±.1/16 3 Pl. DEC ±0.08 Angles ±1° 3) Note reference =			
SIGNATURES		DATE	
DRAWN: Hm	NOV-01-2017		
CHECKED: Jod	NOV-01-2017		
ENGINEER:			
APPROVAL: Tommy	NOV-01-2017		
CUSTOMER:		ECO-MATE BACK SHELL, CORD GRIP SIZE 18.	
TEST DRAWINGS SUPERSEDES PREVIOUS TEST DRAWINGS. SPECIFICATIONS AND PERFORMANCE DATA ARE THE PROPERTY OF AMPHENOL CORPORATION. NO PARTS OR REPRODUCTION ARE PERMITTED. ALL MANUFACTURING VARIATIONS ARE CORRECT.			
SCALE: NONE	SIZE: B	TYPE: C-	DWG NO: RTOS-18CG-NS**
			REVISION: B1
SHEET 1		OF 1	

Amphenol

Sine Systems - www.amphenol-sine.com
 44724 Morley Drive
 Clinton Township, MI 48036