



# IGPS-1080-24V-I

**Industrial 8-port unmanaged Gigabit PoE Ethernet switch with 8x10/100/1000Base-T(X) P.S.E., 24VDC power inputs, Isolation version**

## Features

- IGPS-1080-24V-I provide 8x10/100/1000Base-T(X) PoE (P.S.E.) ports
- Supports IEEE 802.3at compliant PoE and total power budget is 120Watts with maximum 30Watts per port
- Supports Isolation protection
- Supports jumbo frame up to 9.6KBytes
- Supports dual 24VDC power inputs for power redundancy
- Supports auto-negotiation and auto-MDI/MDI-X
- Supports store and forward transmission
- Supports flow control
- Rigid IP-30 housing design
- DIN-Rail and wall mounting enabled

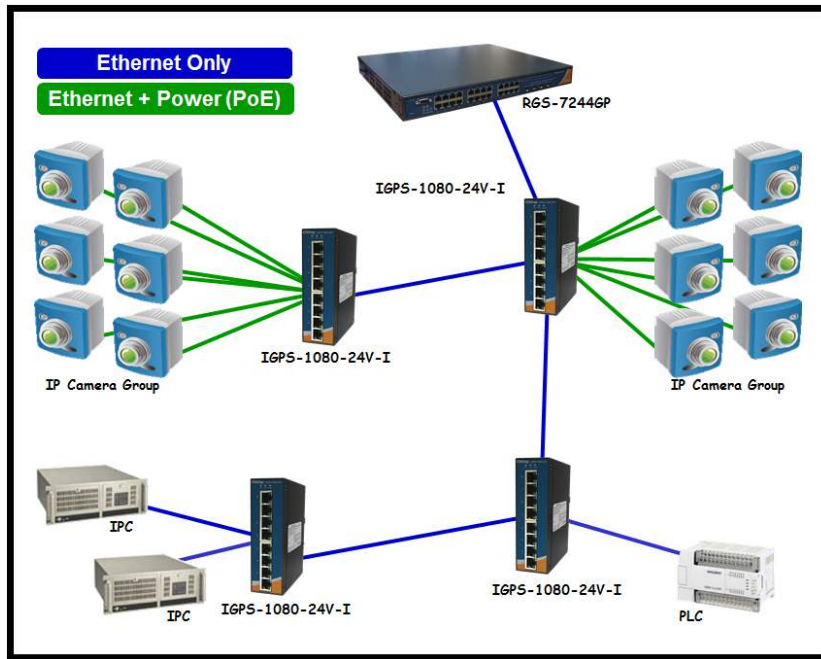


## Introduction

IGPS-1080-24V-I is an unmanaged Gigabit PoE Ethernet switch with P.S.E. function. IGPS-1080-24V-I supports Power over Ethernet, a system to transmit electrical power, along with data, to remote devices over standard twisted-pair cable in an Ethernet network. IGPS-1080-24V-I support dual 24VDC power inputs and generates 50VDC P.S.E. power output per port. IGPS-1080-24V-I PoE switch has 8X10/100/1000Base-T(X) P.S.E. (Power Sourcing Equipment) ports. P.S.E. is a device (switch or hub for instance) that will provide power in a PoE setup. The wide operating temperature range from -40°C to 70°C can satisfy most of operating environment. Therefore, the switch is one of the most reliable choices for PoE Ethernet application.

## Practical Operation

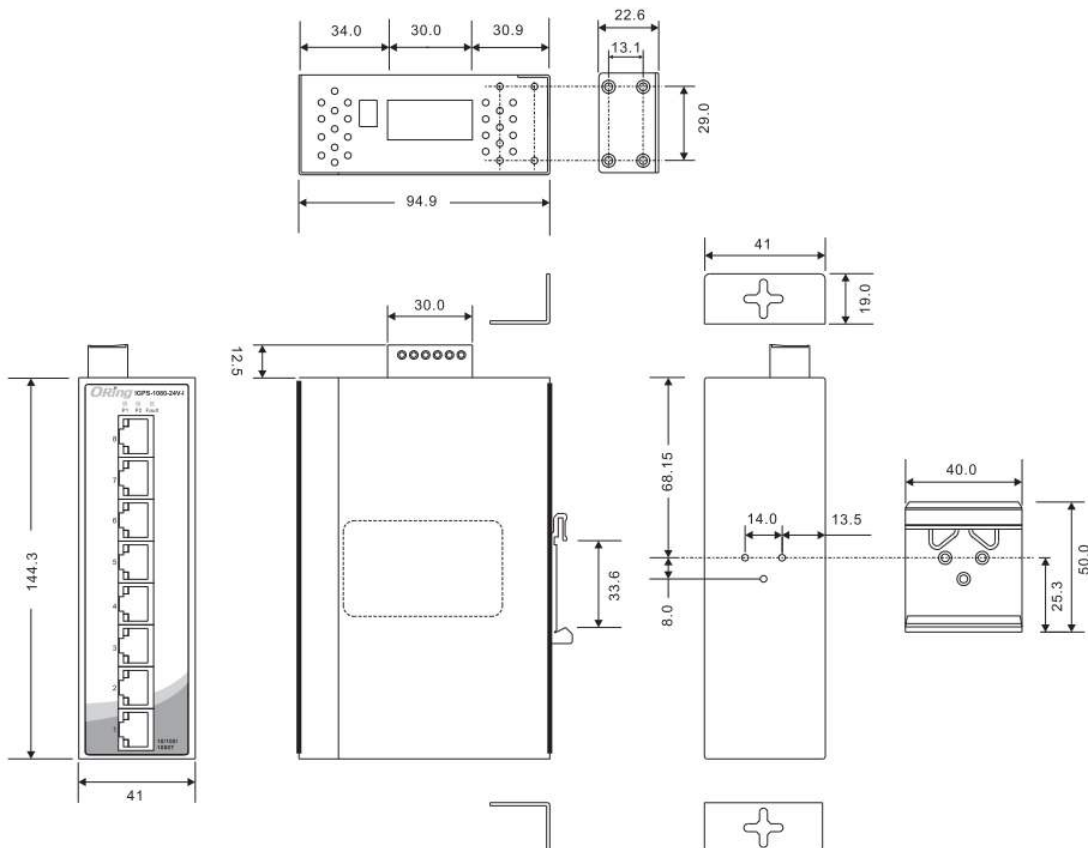
IGPS-1080-24V-I can be used in connecting several PoE P.D. Ethernet devices like IP-Camera or other Ethernet devices. In addition, there are two different power inputs at terminal block to avoid interruption caused by power down. When the primary DC power input fails, the backup power input will take over immediately to guarantee a non-stop operation.



Connections of Ethernet devices

## Dimension

(Unit =mm)



## PoE Pin Definition

- 10/100Base-T(X) P.S.E. RJ-45 port

RJ-45 Pin Definition	
Pin No.	Description
#1	TD+ with PoE Power input +
#2	TD- with PoE Power input +
#3	RD+ with PoE Power input -
#6	RD- with PoE Power input -

- 1000Base-T P.S.E. RJ-45 port

RJ-45 Pin Definition	
Pin No.	Description
#1	BI_DA+ with PoE Power input +
#2	BI_DA- with PoE Power input +
#3	BI_DB+ with PoE Power input -
#4	BI_DC+
#5	BI_DC-
#6	BI_DB- with PoE Power input -
#7	BI_DD+
#8	BI_DD-

## Specifications

ORing Switch Model	IGPS-1080-24V-I
<b>Physical Ports</b>	
10/100/1000Base-T(X) Ports in RJ45 With P.S.E.	8
<b>Technology</b>	
Ethernet Standards	IEEE 802.3 for 10Base-T IEEE 802.3u for 100Base-TX IEEE 802.3ab for 1000Base-T IEEE 802.3x for Flow control IEEE 802.3at compliant PoE specification (up to 30 Watts per port for P.S.E.)
MAC Table	4K MAC addresses
Processing	Store-and-Forward
Jumbo Frame	Up to 9.6KBytes
<b>LED indicators</b>	
Power indicator	Green : Power LED x 2
Fault indicator	Amber : Indicate PWR1 or PWR2 failure
10/100/1000Base-T(X) RJ45 port indicator and PoE indicator	Dual color LED for port Speed/Link/Act : Green for 1Gbps link/act, Amber for 10/100Mbps link/act Green for PoE power injected.

DIP-Switch	
DIP-Switch 1	Power-1 failed warning : (ON) enable, (OFF) disable
DIP-Switch 2	Power-2 failed warning : (ON) enable, (OFF) disable
Fault contact	
Relay	Relay output to carry capacity of 1A at 24VDC
Power	
Redundant Input power	Dual DC inputs. 24~36VDC on 6-pin terminal block.
PoE output power	52 ~ 57VDC
Power consumption (Typ.)	7.8 Watts
Overload current protection	Present
Reverse polarity protection	NOT Present
Physical Characteristic	
Enclosure	IP-30
Dimension (W x D x H)	41 (W) x 94.9 (D) x 144.3(H) mm
Weight (g)	452 g
Environmental	
Storage Temperature	-40 to 85°C (-40 to 185°F)
Operating Temperature	-40 to 70°C (-40 to 158°F)
Operating Humidity	5% to 95% Non-condensing
Regulatory approvals	
EMI	FCC Part 15, CISPR (EN55022) class A, E-MARK
EMS	EN61000-4-2 (ESD), EN61000-4-3 (RS), EN61000-4-4 (EFT), EN61000-4-5 (Surge), EN61000-4-6 (CS), EN61000-4-8, EN61000-4-11
Shock	IEC60068-2-27
Free Fall	IEC60068-2-32
Vibration	IEC60068-2-6
Warranty	5 years

## Ordering Information

**IGPS-1AAB-24V-I**

Code Definition	10/100/1000Base-T(X) P.S.E.	Port Number	Additional Port Number
Option	- 08: 8 ports		- 0: 0 port
Available Model	Model Name	Description	
	<b>IGPS-1080-24V-I</b>	Industrial 8-port unmanaged Gigabit PoE Ethernet switch with 8x10/100/1000Base-T(X) P.S.E., 24VDC power inputs, Isolation version	

## Packing List

---

- IGPS-1080-24V-I x 1
- Din-Rail Kit x 1
- Wall-Mount Kit x 1
- Quick Installation Guide x 1

## Optional Accessories

---

- DR-45-12/24 : 45 Watts@12/24VDC DIN-Rail power supply
- DR-75-12/24 : 75 Watts@12/24VDC DIN-Rail power supply
- DR-120-12/24 : 120 Watts@12/24VDC DIN-Rail power supply