

DO NOT SCALE FROM THIS PRINT

PRF92-P-C-EE-085A-SD

SERIES  
-92: 2.92mm

GENDER  
-P: PLUG

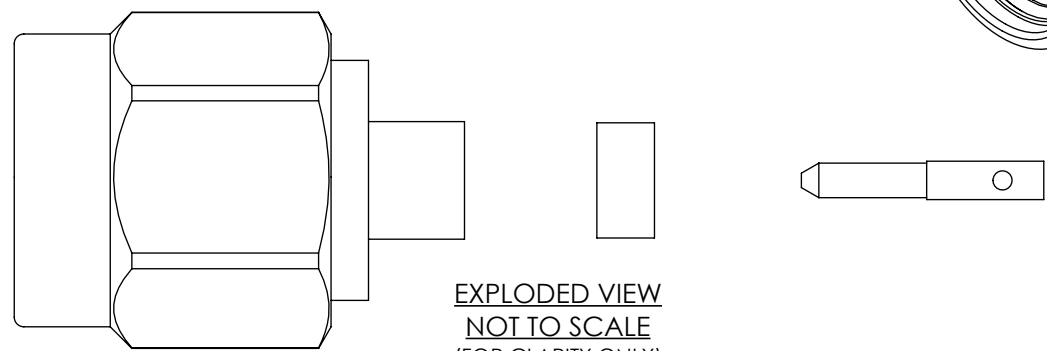
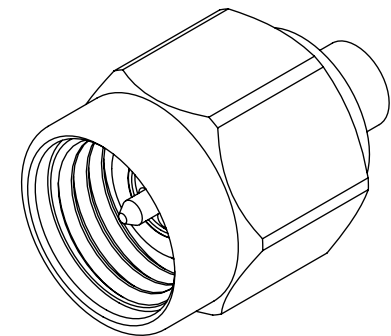
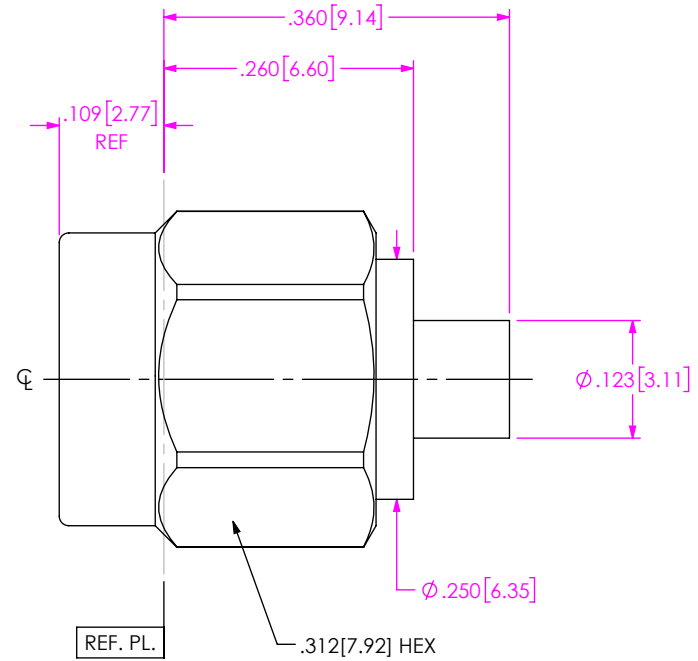
TYPE  
-C: CABLE

FINISH  
-EE: 50μ" EXTRA HEAVY GOLD CENTER CONTACT, 50M" EXTRA HEAVY GOLD OUTER CONTACT

TERMINATION  
-D: DIRECT SOLDER

ORIENTATION  
-S: STRAIGHT

CABLE TYPE  
-085A: .085" SEMI-RIGID CABLE



NOTES:

1. MATERIAL:  
CLAMP NUT: STAINLESS STEEL  
BODY, CONTACT, LOCK RING: BERYLLIUM COPPER  
BEAD: PPE  
GASKET: SILICONE RUBBER
2. FINISH:  
CLAMP NUT: PASSIVATED  
BODY, CONTACT: 50μ" MIN. GOLD OVER 50μ" MIN. NICKEL PLATE
3. PCI P/N: 3147

UNLESS OTHERWISE SPECIFIED, DIMENSIONS ARE IN INCHES.  
TOLERANCES ARE:  
DECIMALS ANGLES  
.XX: ±.02[0.5] 1°  
.XXX: ±.005[0.13]  
.XXXX: ±.0005[0.013]

**PROPRIETARY NOTE**  
THIS DOCUMENT CONTAINS CONFIDENTIAL AND PROPRIETARY INFORMATION AND ALL DESIGN, MANUFACTURING, REPRODUCTION, USE, PATENT RIGHTS AND SALES RIGHTS ARE EXPRESSLY RESERVED BY SAMTEC, INC. THIS DOCUMENT SHALL NOT BE DISCLOSED, IN WHOLE OR PART, TO ANY UNAUTHORIZED PERSON OR ENTITY NOR REPRODUCED, TRANSFERRED OR INCORPORATED IN ANY OTHER PROJECT IN ANY MANNER WITHOUT THE EXPRESS WRITTEN CONSENT OF SAMTEC, INC.



520 PARK EAST BLVD, NEW ALBANY, IN 47150  
PHONE: 812-944-6733 FAX: 812-948-5047  
e-Mail info@SAMTEC.com code 55322

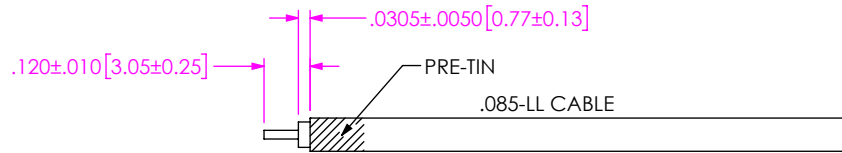
DO NOT SCALE DRAWING SHEET SCALE: 5:1

DESCRIPTION: 2.92 PLUG TO .085 LOW LOSS

DWG. NO. PRF92-P-C-EE-085A-SD

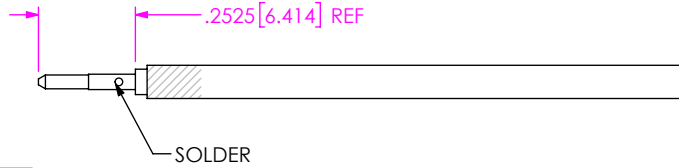
BY: JERRY SU 05/18/2019 SHEET 1 OF 4

# CABLE APPLICATION VIEWS



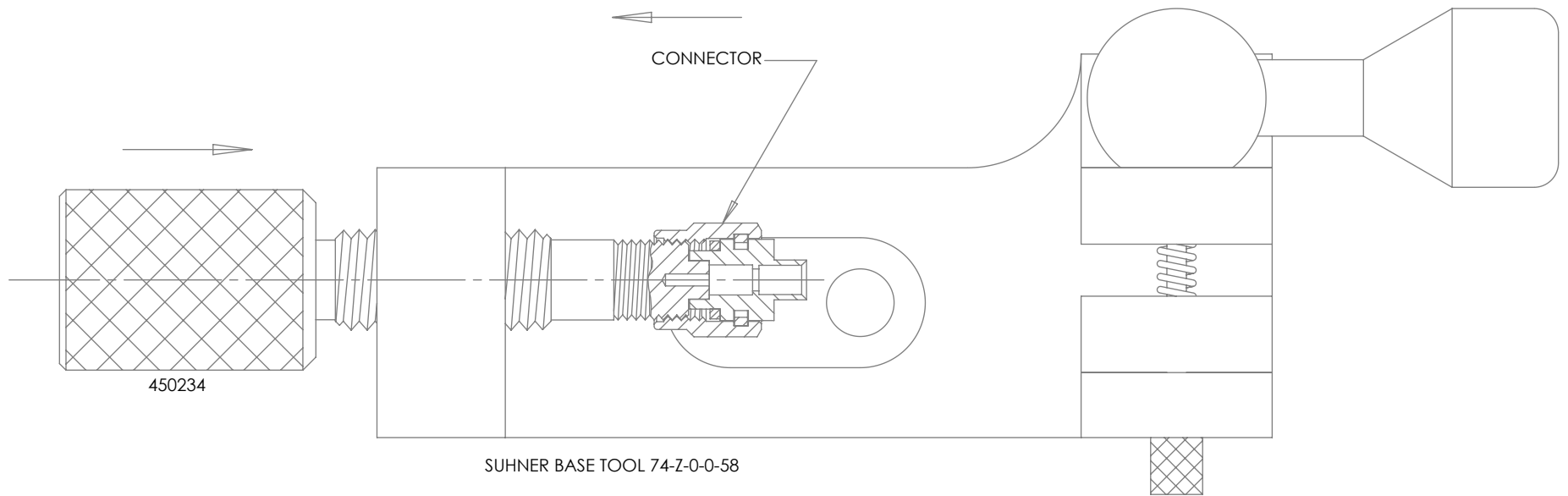
- 1A. TRIM CABLE JACKET & DIELECTRIC TO EXPOSE CENTER CONDUCTOR AS SHOWN. (DO NOT NICK CENTER CONDUCTOR).
- 1B. PRE-TIN CABLE JACKET TO THE APPROXIMATE LENGTH SHOWN.

IN-PROCESS VIEW 1



2. PRE-TIN CABLE CENTER CONDUCTOR AND SOLDER ON CONTACT WITH GAP SHOWN.

IN-PROCESS VIEW 2



3. THREAD PCI ASSEMBLY TOOL 450234 INTO SUHNER BASE. THEN THREAD CONNECTOR BODY ONTO PCI TOOL UNTIL SEATED.

IN-PROCESS VIEW 3

**PROPRIETARY NOTE**  
 THIS DOCUMENT CONTAINS CONFIDENTIAL AND PROPRIETARY INFORMATION AND ALL DESIGN, MANUFACTURING, REPRODUCTION, USE, PATENT RIGHTS AND SALES RIGHTS ARE EXPRESSLY RESERVED BY SAMTEC, INC. THIS DOCUMENT SHALL NOT BE DISCLOSED, IN WHOLE OR PART, TO ANY UNAUTHORIZED PERSON OR ENTITY NOR REPRODUCED, TRANSFERRED OR INCORPORATED IN ANY OTHER PROJECT IN ANY MANNER WITHOUT THE EXPRESS WRITTEN CONSENT OF SAMTEC, INC.

**samtec**  
 520 PARK EAST BLVD, NEW ALBANY, IN 47150  
 PHONE: 812-944-6733 FAX: 812-948-5047  
 e-Mail info@SAMTEC.com code 55322

DO NOT SCALE DRAWING  
 SHEET SCALE: 2:1

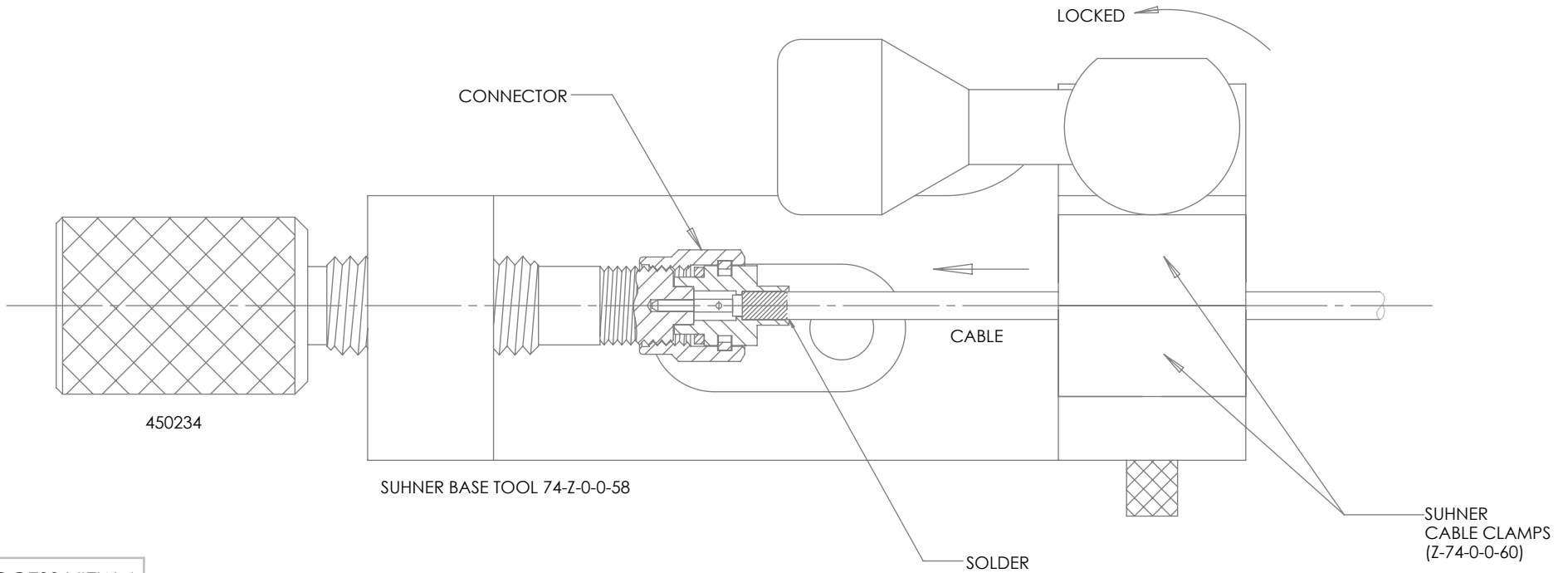
DESCRIPTION:  
 2.92 PLUG TO .085 LOW LOSS  
 DWG. NO. PRF92-P-C-EE-085A-SD  
 BY: JERRY SU 05/18/2019 SHEET 2 OF 4

# CABLE APPLICATION VIEWS

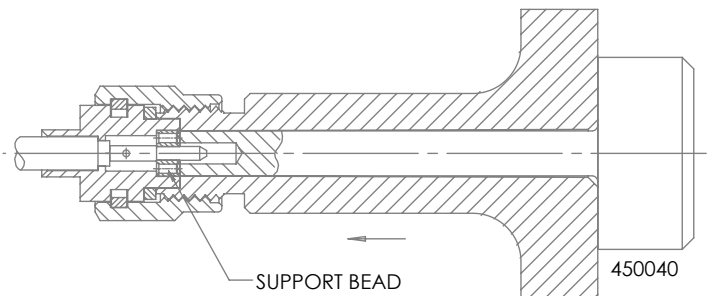
4A. SLIDE PREPARED CABLE THROUGH CABLE CLAMP BLOCKS AND INSERT CABLE INTO CONNECTOR BACK END UNTIL FULLY SEATED. THEN LOCK CABLE IN PLACE BY ROTATING LEVER ARM.

4B. HEAT CONNECTOR BODY BACK END AND REFLOW SOLDER CABLE TO CONNECTOR.

4C. FLOW ADDITIONAL SOLDER AT REAR OF BODY WHERE INDICATED IF NECESSARY.




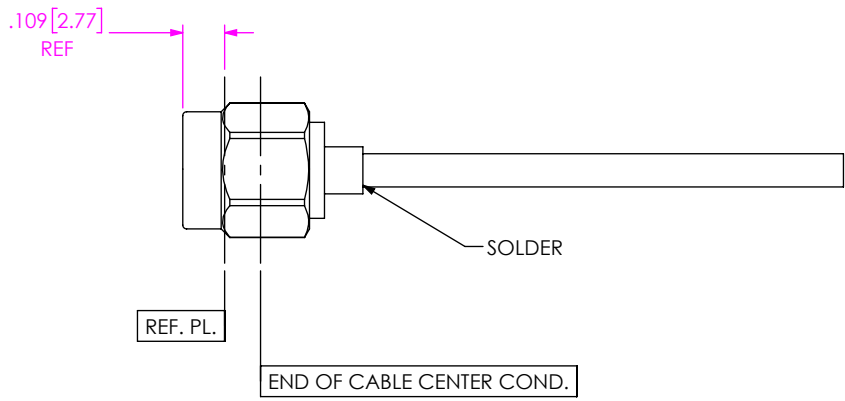
IN-PROCESS VIEW 4



5. REMOVE CONNECTOR FROM SUHNER BASE TOOL AND INSTALL DIELECTRIC SUPPORT BEAD USING PCI TOOL SET 450040.


IN-PROCESS VIEW 5

<p><b>PROPRIETARY NOTE</b></p> <p>THIS DOCUMENT CONTAINS CONFIDENTIAL AND PROPRIETARY INFORMATION AND ALL DESIGN, MANUFACTURING, REPRODUCTION, USE, PATENT RIGHTS AND SALES RIGHTS ARE EXPRESSLY RESERVED BY SAMTEC, INC. THIS DOCUMENT SHALL NOT BE DISCLOSED, IN WHOLE OR PART, TO ANY UNAUTHORIZED PERSON OR ENTITY NOR REPRODUCED, TRANSFERRED OR INCORPORATED IN ANY OTHER PROJECT IN ANY MANNER WITHOUT THE EXPRESS WRITTEN CONSENT OF SAMTEC, INC.</p>		
	<p>520 PARK EAST BLVD, NEW ALBANY, IN 47150                  PHONE: 812-944-6733 FAX: 812-948-5047                  e-Mail info@SAMTEC.com code 55322</p>	
	<p>DO NOT SCALE DRAWING</p> <p>SHEET SCALE: 2:1</p>	<p>DESCRIPTION: 2.92 PLUG TO .085 LOW LOSS</p> <p>DWG. NO. PRF92-P-C-EE-085A-SD</p>
<p>BY: JERRY SU 05/18/2019</p>		<p>SHEET 3 OF 4</p>



6. INSPECT INTERFACE INSULATOR RECESSION USING THE APPROPRIATE GAGES. SUPPORT BEAD INNER AND OUTER SURFACES TO BE SUB-FLUSH WITH BODY REFERENCE PLANE.

IN-PROCESS VIEW 6

<p><b>PROPRIETARY NOTE</b></p> <p>THIS DOCUMENT CONTAINS CONFIDENTIAL AND PROPRIETARY INFORMATION AND ALL DESIGN, MANUFACTURING, REPRODUCTION, USE, PATENT RIGHTS AND SALES RIGHTS ARE EXPRESSLY RESERVED BY SAMTEC, INC. THIS DOCUMENT SHALL NOT BE DISCLOSED, IN WHOLE OR PART, TO ANY UNAUTHORIZED PERSON OR ENTITY NOR REPRODUCED, TRANSFERRED OR INCORPORATED IN ANY OTHER PROJECT IN ANY MANNER WITHOUT THE EXPRESS WRITTEN CONSENT OF SAMTEC, INC.</p>	 <p>520 PARK EAST BLVD, NEW ALBANY, IN 47150          PHONE: 812-944-6733 FAX: 812-948-5047          e-Mail info@SAMTEC.com code 55322</p>
<p>DO NOT SCALE DRAWING</p>	<p>DESCRIPTION: 2.92 PLUG TO .085 LOW LOSS</p>
<p>SHEET SCALE: 2:1</p>	<p>DWG. NO. PRF92-P-C-EE-085A-SD</p>
	<p>BY: JERRY SU 05/18/2019 SHEET 4 OF 4</p>