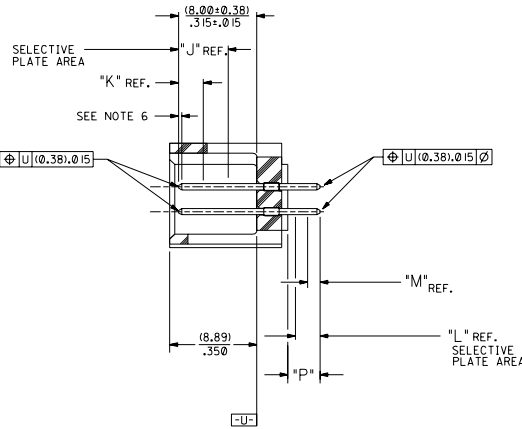


RECOMMENDED P.C. BOARD HOLE LAYOUT



SECTION J-J

**NOTES:**

- 1- 20 CIRCUIT SIZE SHOWN FOR ILLUSTRATION PURPOSES.
- 2- PIN PUSHOUT FORCE: (17.79 N) 1/4 LBS.
- 3- PINS MUST MEET SOLDERABILITY SPEC. MIL-STD-202 METHOD 208B.
- 4- WINDOW NOT AVAILABLE ON 6 AND 8 CIRCUIT SIZE.
- 5- FOR CHARTED DIMENSIONS AND ASSEMBLY NO.S NOT SHOWN ON THIS SHEET - SEE SHEET 2.
- 6- ROW TO ROW PIN HEIGHT VARIATION MUST NOT EXCEED (0.13) / 0.05 IN.
- 7- PRODUCT CONFORMS TO PS-8723.

**MATERIAL:**

SHROUDED WAFER: GLASS FILLED POLYESTER, 94V-0; COLOR: BLACK.  
 PINS: PHOSPHOR BRONZE, SEE SHEET 2 FOR FINISHES.

**ASSEMBLY STYLE "A" AND "B"**

CKT.	8723				
	DIM. "A"	DIM. "B"	DIM. "C"	DIM. "D"	DIM. "E"
06	(1.68) .066	(8.43) .332	(5.08) .200	(1.68) .066	
08	(1.68) .066	(10.97) .432	(7.62) .300	(1.68) .066	
10	(1.68) .066	(13.51) .532	(10.16) .400	(4.22) .166	
12	(1.68) .066	(16.05) .632	(12.70) .500	(4.22) .166	
14	(1.68) .066	(18.59) .732	(15.24) .600	(16.76) .266	
16	(1.68) .066	(21.13) .832	(17.78) .700	(16.76) .266	
18	(1.68) .066	(23.67) .932	(20.32) .800	(9.30) .366	
20	(1.68) .066	(26.21) 1.032	(22.86) .900	(1.68) .066	(19.46) .766
22	(1.68) .066	(28.75) 1.132	(25.40) 1.000	(1.68) .066	(22.00) .866
24	(1.68) .066	(31.29) 1.232	(27.94) 1.100	(1.68) .066	(24.54) .966
26	(1.68) .066	(33.83) 1.332	(30.48) 1.200	(1.68) .066	(27.08) 1.066
28	(1.68) .066	(36.37) 1.432	(33.02) 1.300	(1.68) .066	(29.62) 1.166
30	(1.68) .066	(38.91) 1.532	(35.56) 1.400	(1.68) .066	(32.16) 1.266
32	(1.68) .066	(41.45) 1.632	(38.10) 1.500	(1.68) .066	(34.70) 1.366
34	(1.68) .066	(43.99) 1.732	(40.64) 1.600	(1.68) .066	(37.24) 1.466
36	(1.68) .066	(46.53) 1.832	(43.18) 1.700	(1.68) .066	(39.78) 1.566
38	(1.68) .066	(49.07) 1.932	(45.72) 1.800	(1.68) .066	(42.32) 1.666
40	(1.68) .066	(51.61) 2.032	(48.26) 1.900	(1.68) .066	(44.86) 1.766
42	(1.68) .066	(54.15) 2.132	(50.80) 2.000	(1.68) .066	(47.40) 1.866
44	(1.68) .066	(56.69) 2.232	(53.34) 2.100	(1.68) .066	(49.94) 1.966
46	(1.68) .066	(59.23) 2.332	(55.88) 2.200	(1.68) .066	(52.48) 2.066
48	(1.68) .066	(61.77) 2.432	(58.42) 2.300	(1.68) .066	(55.02) 2.166
50	(1.68) .066	(64.31) 2.532	(60.96) 2.400	(1.68) .066	(57.56) 2.266
52	(1.68) .066	(66.85) 2.632	(63.50) 2.500	(1.68) .066	(60.10) 2.366
54	(1.68) .066	(69.39) 2.732	(66.04) 2.600	(1.68) .066	(62.64) 2.466
56	(1.68) .066	(71.93) 2.832	(68.58) 2.700	(1.68) .066	(65.18) 2.566
58	(1.68) .066	(74.47) 2.932	(71.12) 2.800	(1.68) .066	(67.72) 2.666
60	(1.68) .066	(77.01) 3.032	(73.66) 2.900	(1.68) .066	(70.26) 2.766
62	(1.68) .066	(79.55) 3.132	(76.20) 3.000	(1.68) .066	(72.80) 2.866
64	(1.68) .066	(82.09) 3.232	(78.74) 3.100	(1.68) .066	(75.34) 2.966
66	(1.68) .066	(84.63) 3.332	(81.28) 3.200	(1.68) .066	(77.88) 3.066
68	(1.68) .066	(87.17) 3.432	(83.82) 3.300	(1.68) .066	(80.42) 3.166
70	(1.68) .066	(89.71) 3.532	(86.36) 3.400	(1.68) .066	(82.96) 3.266
72	(1.68) .066	(92.25) 3.632	(88.90) 3.500	(1.68) .066	(85.50) 3.366

- U ADD -3803 OPT  
DCP2004-2260  
DMORGAN 04/05/20
- T LEAD FREE  
USP2004-1770  
RUWITE 04/04/26
- S ADD -3802 OPTION  
ECN #10P2004-102  
DMORGAN 04/01/2
- R2 TAB DIF DIM 6 CIR  
ECN #10T1999-0145  
DMORGAN 56/09/01
- R1 ADD WDG LATCH NOTE  
ECN #10T1998-0399  
DMORGAN 56/06/23
- R ADDED SHEET 7  
PER ECR NO US0208  
03-23-96
- O REMOVE FDP NO.S  
PER ECR NO US0205  
05-04-93
- P CHGD WINDOW NOTES  
PER ECR NO US3016  
05-04-93
- O CHANGED MATERIAL  
PER ECR NO US0146  
01-22-93
- R2 REVISED A REDRAWN  
PER ECR NO US2073  
05-29-92
- LTR REVISIONS

DIMENSIONS SHOWN METRIC INCH  
 TITLE SALES ASSEMBLY  
 WAFER - STRAIGHT MT. FULLY SHROUDED  
 .100 GRID - FOR USE W/ .025 SQ. PINS  
 WITH .066 END WALLS  
 MOLEX INCORPORATED  
 SHEET NO. 1 OF 7  
 DATE 09/17/11  
 SEE CHART SDA-8723-\*\*\*\*\*

