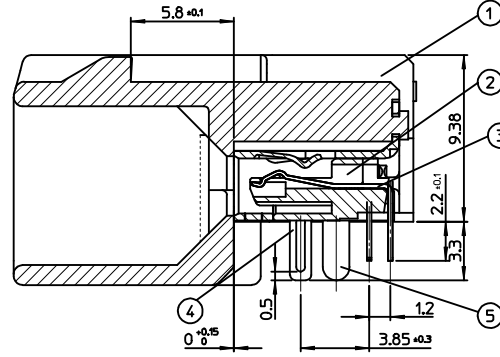
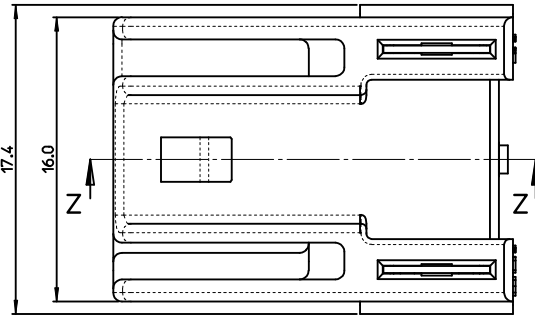


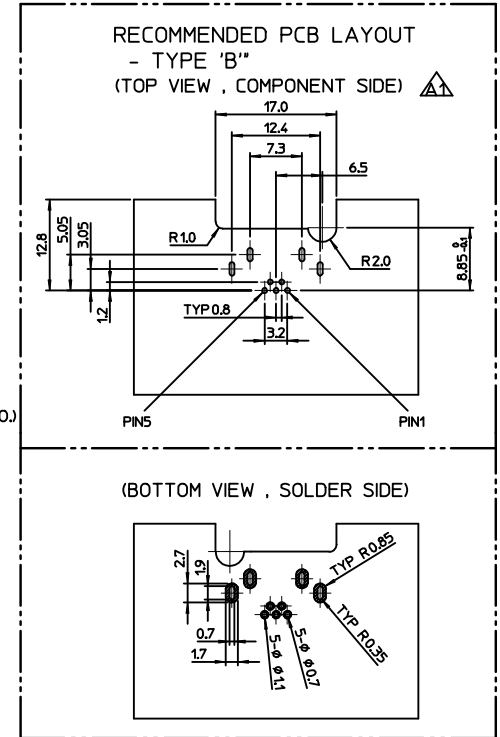
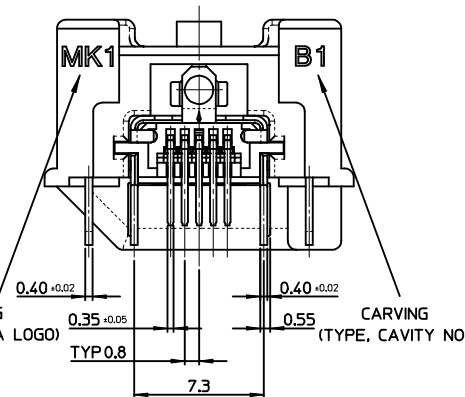
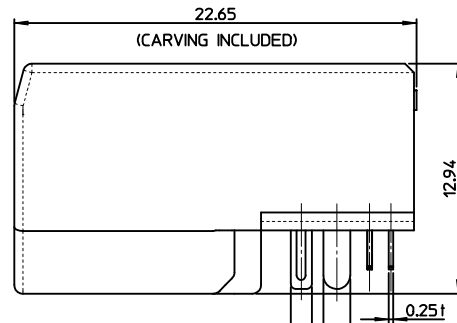
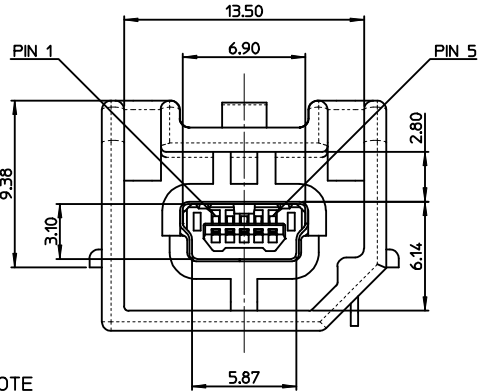
ISOMETRIC VIEW



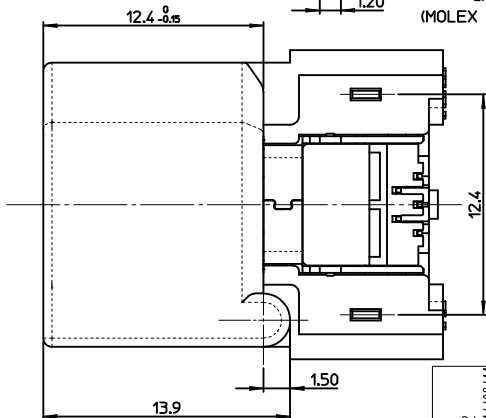
SECTION Z-Z

<PART LIST>

NO.	PART NAME	MATERIALS
①	SHROUD	LCP, glass-filled, UL94 V-0
②	REC. HOUSING	LCP, glass-filled, UL94 V-0
③	TERMINAL	COPPER ALLOY
④	SHIELD CASE	PHOSPHOR BRONZE
⑤	FITTING NAIL	BRASS



- NOTE
- MATES WITH :
(MOLEX SERIES NO. - 111014, 111015, 111005, 111041, 111019, 111020)
 - SHROUD GEOMETRY AND ASSEMBLY WITH USB MINI-B CONNECTOR ARE ACCORDING TO USCAR STD 999-U-USB-Z01
 - FINISHES
 - TERMINAL :
CONTACT AREA : GOLD 0.75µm MIN.
SOLDER TAIL AREA : TIN 3.8µm MIN.
UNDER PLATING : NI 1.25µm MIN.
 - SHIELD CASE :
3.0µm MIN. TIN OVER NI 1.0µm MIN.
 - FITTING NAIL :
3.0µm MIN. TIN OVER NI 1.0µm MIN.
 - UNLESS OTHERWISE SPECIFIED, TYPICAL RECOMMENDED PCB MANUFACTURING TOLERANCE IS ±0.05
 - PACKAGING IS TRAY :
(48 PCS/TRAY, 5 TRAY/TRAY BOX, 240 PCS/TRAY BOX, 960 PCS/CARTON BOX)
 - PRODUCT SPECIFICATION : PS-49616-001
 - PACKAGING INFORMATION : PK-49616-001
 - PCB THICKNESS : 1.6mm(REFERENCE)



<TABLE 1>

MATERIAL NO.	ORDER NO.	COLOR	PACKING
496160105	49616-0105	GRAY	TRAY

REVISED
EC NO: KTR2015-0012
DRAWN BY: DRWNY BAEK
CHKD: CHIKO
APPR: JYCHOI
DATE: 2014/09/11
DATE: 2014/09/11

QUALITY SYMBOLS	GENERAL TOLERANCES (UNLESS SPECIFIED)	DIMENSION STYLE	SCALE	DESIGN UNITS	THIRD ANGLE PROJECTION
▽=0	4 PLACES ± --- ± ---	MM ONLY		METRIC	
▽=0	3 PLACES ± --- ± ---				
	2 PLACES ± 0.15 ± ---				
	1 PLACE ± 0.25 ± ---				
	ANGULAR ± 3°				
	DRAFT WHERE APPLICABLE MUST REMAIN WITHIN DIMENSIONS				
		DRAWN BY: Y1BAEK	DATE: 2014/08/27	TITLE: HSAUTOLINK R/A HEADER TYPE-B (SOLDER TAIL=2.2MM)	
		CHECKED BY:	DATE:		
		APPROVED BY: JYCHOI	DATE: 2014/09/04		
		MATERIAL NO.:	DOCUMENT NO.:	MOLEX MOLEX INCORPORATED	
		SEE TABLE1	SD-49616-004		
		SIZE: A2	THIS DRAWING CONTAINS INFORMATION THAT IS PROPRIETARY TO MOLEX INCORPORATED AND SHOULD NOT BE USED WITHOUT WRITTEN PERMISSION		SHEET NO. 1 OF 1