

THIS DRAWING IS UNPUBLISHED.

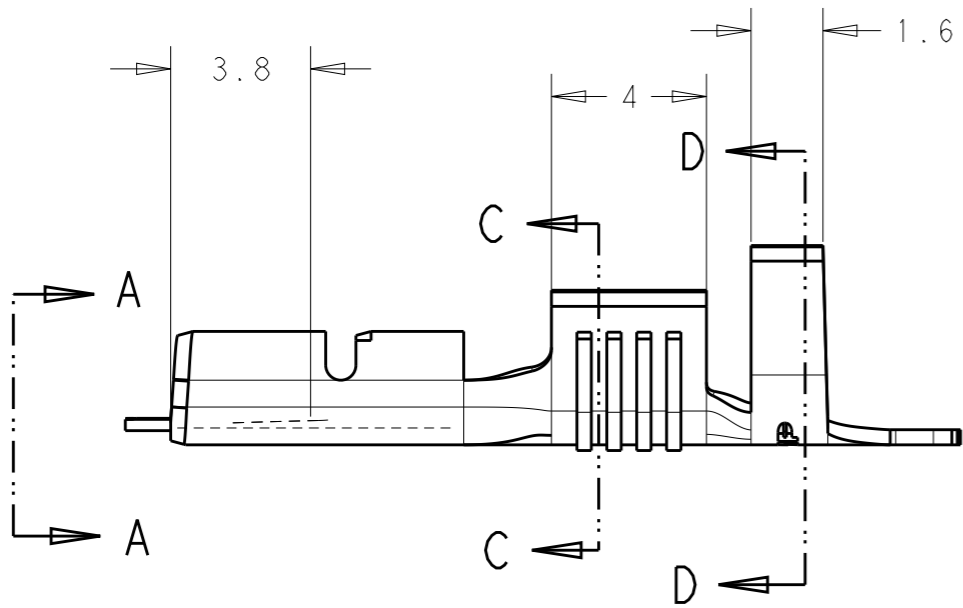
RELEASED FOR PUBLICATION

© COPYRIGHT copyright_dBVe-

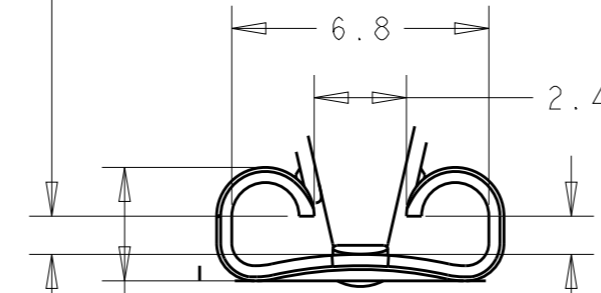
ALL RIGHTS RESERVED.

REVISIONS

P	LTR	DESCRIPTION	DATE	DWN	APVD
H3		REDRAWN PER ECR-16-010131	13JUL2016	NK	PKS
U		ECR-18-006177	16MAY2018	GG	TD
U1		REVISED PER ECR-20-009164	14AUG2020	MK	DH



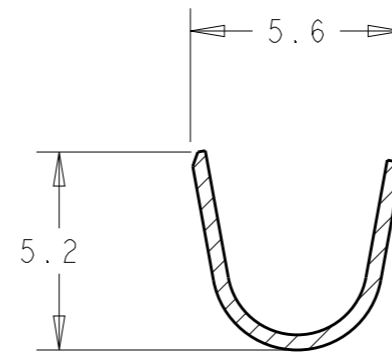
GAP AS REQUIRED TO MEET FORCE SPECIFICATIONS AND 0.71 MAX



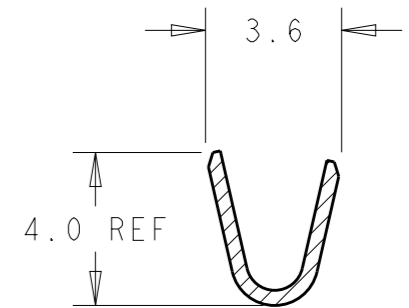
VIEW A-A

- 1 OBSOLETE PARTS: OBSOLETE CIS STREAMLINING PER D.RENAUD/D.SINISI.
- 2 MATING TAB THK. IS 0.84-0.76

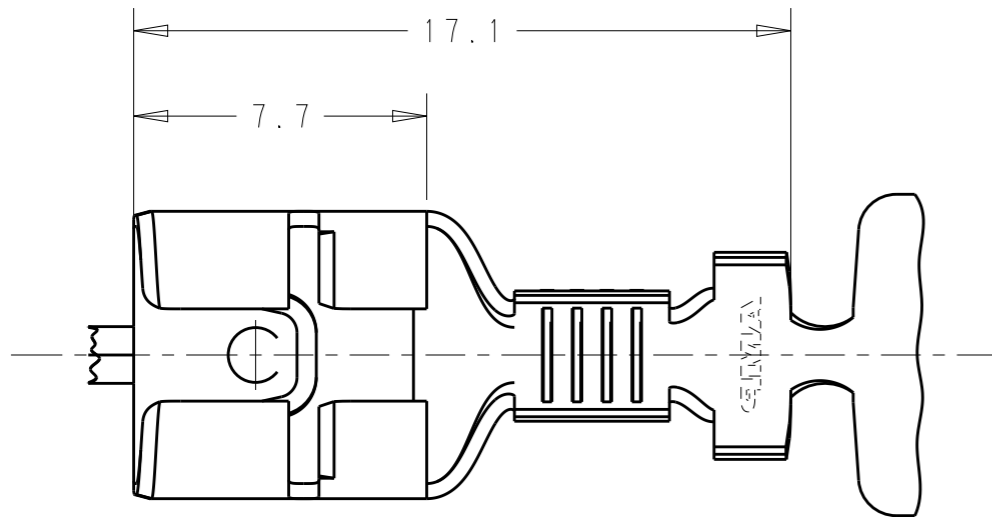
FOR THICK WITH TONGUE OF 0.8MM HOLE



SECTION D-D



SECTION C-C



GENERAL TOLERANCE: ±0.4

1	OBSOLETE	NICKEL	STEEL	737440-5
	OBSOLETE	-	BRONZE	737440-4
	OBSOLETE	ARE PRE	LATON	737440-3
		ESTANADO	LATON	737440-2
		-	LATON	737440-1
		FINISH	MATERIAL	PART NO.

WIRE RANGE: 1.0-2.5 MM²

INS. RANGE: Ø3.0-4.3MM

THIS DRAWING IS A CONTROLLED DOCUMENT.		DWN NAGALAKSHMI K 13JUL2016	TE Connectivity	
DIMENSIONS: mm		CHK KRISHNAN P U PRASANTH 13JUL2016		
TOLERANCES UNLESS OTHERWISE SPECIFIED:		APVD KRISHNAN P U PRASANTH 13JUL2016	NAME RECEPTACULO FASTON 6,35	
0 PLC ±- 1 PLC ±- 2 PLC ±- 3 PLC ±- 4 PLC ±- ANGLES ±-		PRODUCT SPEC -	SIZE A3	
MATERIAL -		APPLICATION SPEC -	CAGE CODE 00779	DRAWING NO G=737440
FINISH -		WEIGHT -	RESTRICTED TO	
		CUSTOMER DRAWING	SCALE 5:1	SHEET 1 OF 1
			REV U1	