



- Industrial Operating Temp: -40°C to +85°C
- Storage Temp: -40°C to +85°C

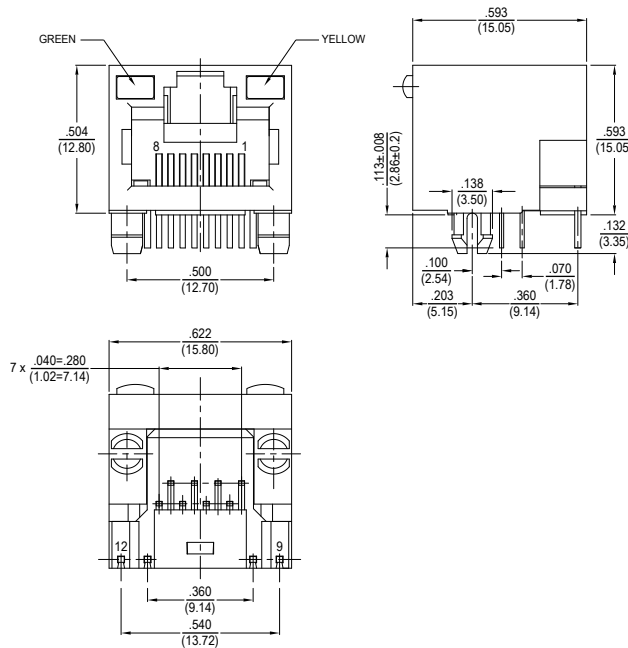


| Electrical Specifications @ 25°C | | | | |
|----------------------------------|----------------------|-------------------------|-------------------------------------|--|
| Voltage Rating (VAC) | Current Rating (Amp) | Contact Resistance (mΩ) | Insulation Resistance @ 500VDC (MΩ) | Dielectric Strength 50/60Hz / 0.5mA / 60 Sec |
| 125 | 1.5 Max | 20 Max | 1000 Min | 1000VAC or 1500VDC |

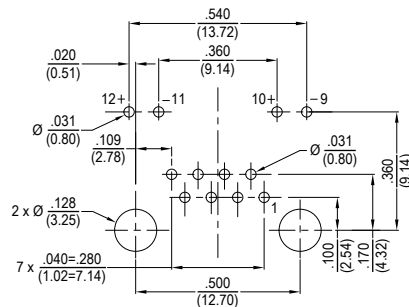
All specifications subject to change without notice.

MECHANICAL

Dimensions: $\frac{\text{inch}}{\text{mm}}$

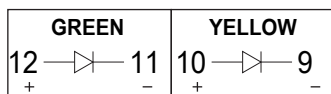


PCB LAYOUT



PCB Thickness 0.63" (1.60mm)
Tolerance ±.002 (0.05mm)

LEDs



NOTES

- Connector Materials:**
Housing & Insert: PBT Black
Contact Material: Phosphor Bronze T=.35mm
Contact Plating: Gold plating 3μ" at Contact Area, Matte Tin at Tail 100μ" Min, Nickel 30μ" Min Over All.