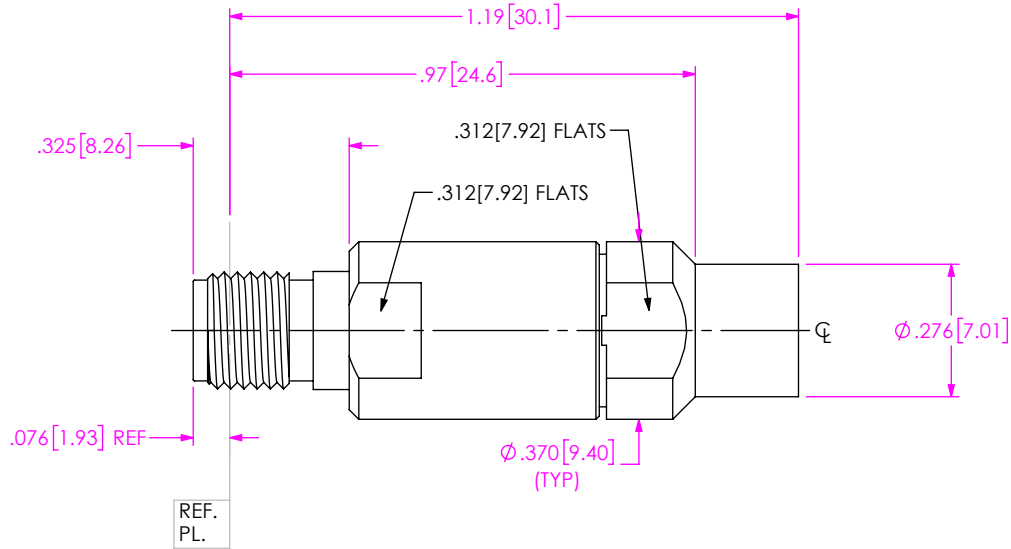


DESIGNED & DIMENSIONED  
IN INCHES[MILLIMETERS]

DO NOT  
SCALE FROM  
THIS PRINT



PRF01-J-C-EP-142-SS

SERIES  
-01: SMA

GENDER  
-J: JACK

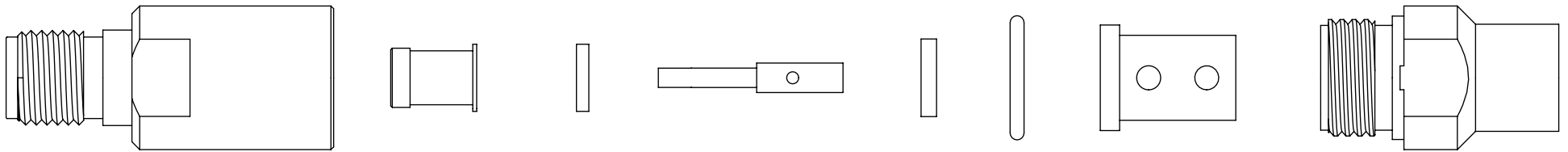
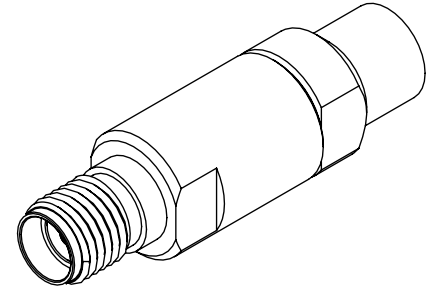
TYPE  
-C: CABLE

FINISH  
-EP: 50μ" EXTRA HEAVY GOLD  
CENTER CONTACT, PASSIVATED  
OUTER CONTACT

TERMINATION  
-S: SOLDER CLAMP

ORIENTATION  
-S: STRAIGHT

CABLE TYPE  
-142: HARBOUR LL142



EXPLODED VIEW  
NOT TO SCALE  
(FOR CLARITY ONLY)

NOTES:

- MATERIAL:  
 BODY, CLAMP NUT: STAINLESS STEEL  
 CONTACT: BERYLLIUM COPPER  
 SOLDER FERRULE: BRASS ALLOY  
 INSULATOR: PTFE  
 BEADS: PEI  
 O-RING: SILICONE RUBBER
- FINISH:  
 BODY, CLAMP NUT: PASSIVATED  
 CONTACT, SOLDER FERRULE: 50μ" MIN. GOLD OVER 50μ" MIN. NICKEL PLATE
- PCI P/N: 3294

UNLESS OTHERWISE SPECIFIED,  
DIMENSIONS ARE IN INCHES.  
TOLERANCES ARE:  
DECIMALS ANGLES  
.XX: ±.01[0.3] 1°  
.XXX: ±.005[0.13]  
.XXXX: ±.0005[0.013]

**PROPRIETARY NOTE**  
 THIS DOCUMENT CONTAINS CONFIDENTIAL AND  
 PROPRIETARY INFORMATION AND ALL DESIGN,  
 MANUFACTURING, REPRODUCTION, USE, PATENT RIGHTS  
 AND SALES RIGHTS ARE EXPRESSLY RESERVED BY SAMTEC,  
 INC. THIS DOCUMENT SHALL NOT BE DISCLOSED, IN WHOLE  
 OR PART, TO ANY UNAUTHORIZED PERSON OR ENTITY NOR  
 REPRODUCED, TRANSFERRED OR INCORPORATED IN ANY  
 OTHER PROJECT IN ANY MANNER WITHOUT THE EXPRESS  
 WRITTEN CONSENT OF SAMTEC, INC.



520 PARK EAST BLVD, NEW ALBANY, IN 47150  
 PHONE: 812-944-6733 FAX: 812-948-5047  
 e-Mail info@SAMTEC.com code 55322

DO NOT SCALE DRAWING

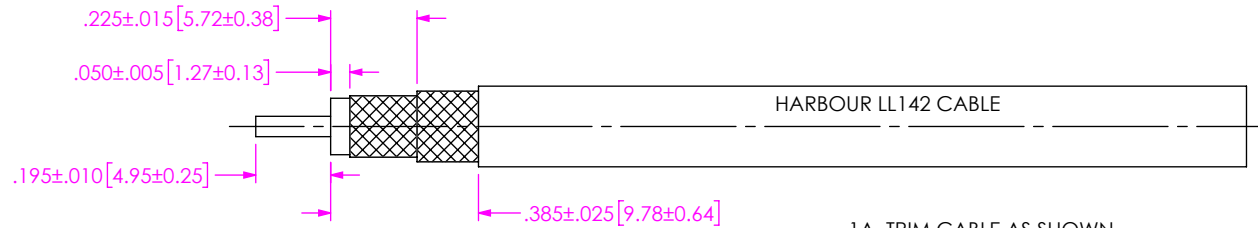
SHEET SCALE: 2.5:1

DESCRIPTION: SMA JACK, SOLDER CLAMP FOR  
HARBOUR LL142 CABLE

DWG. NO. PRF01-J-C-EP-142-SS

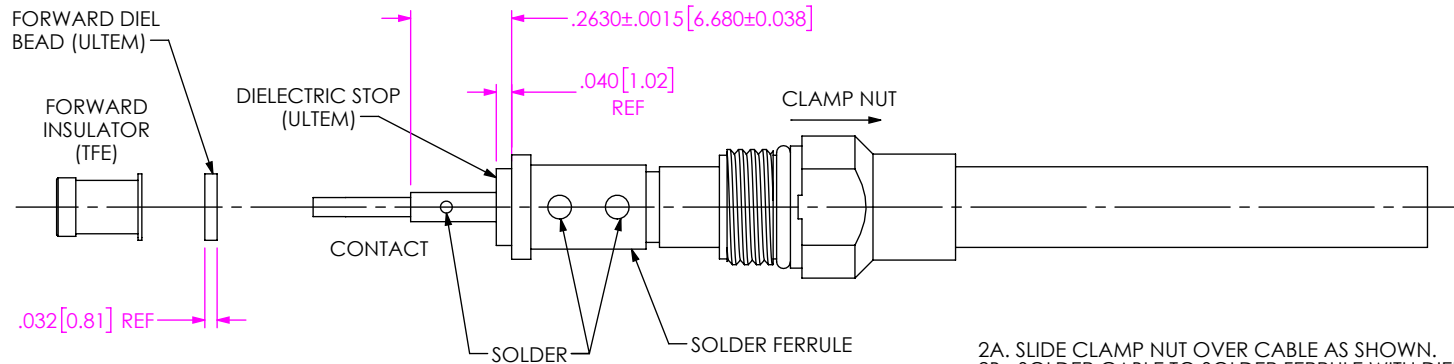
BY: EVE L 04/29/2019 SHEET 1 OF 2

# CABLE APPLICATION VIEWS



IN-PROCESS VIEW 1

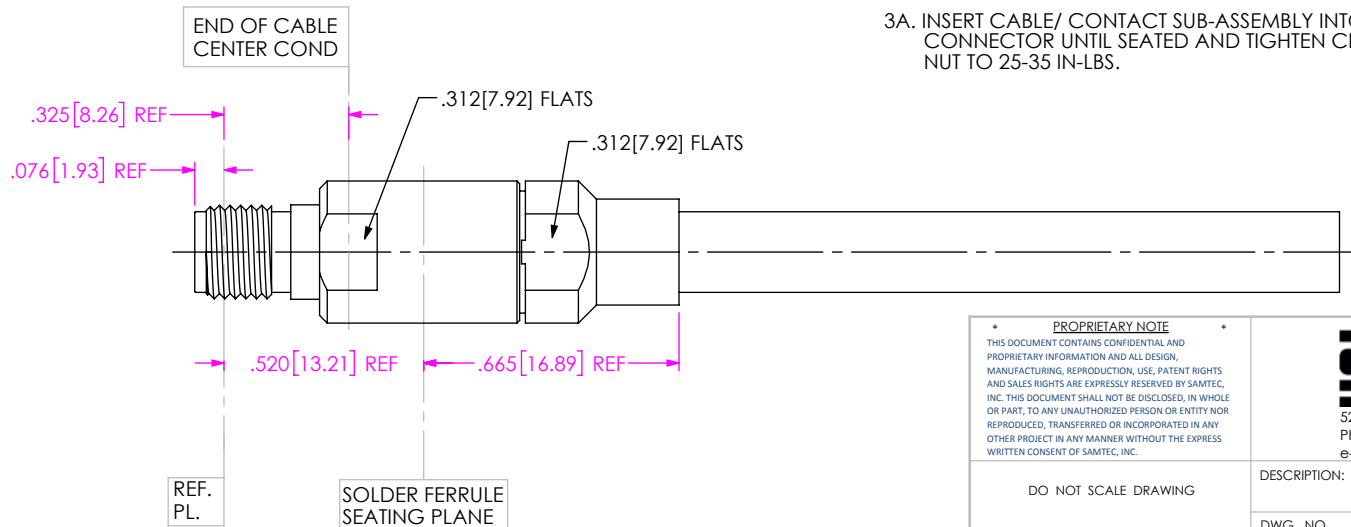
1A. TRIM CABLE AS SHOWN.



- 2A. SLIDE CLAMP NUT OVER CABLE AS SHOWN.
- 2B. SOLDER CABLE TO SOLDER FERRULE WITH DIELECTRIC FLUSH WITH FACE OF FERRULE.
- 2C. SLIDE DIELECTRIC STOP (Ø .200 OD) OVER CABLE CENTER CONDUCTOR AND SOLDER CONTACT FLUSH TO STOP TO DIMENSION SHOWN.
- 2D. SLIDE FORWARD INSULATOR & DIELECTRIC BEAD (Ø .173 OD) ONTO CONTACT.

IN-PROCESS VIEW 2

DISTANCE FROM END OF CABLE CENTER COND. TO REF. PL. IS .325 (REF)



- 3A. INSERT CABLE/ CONTACT SUB-ASSEMBLY INTO CONNECTOR UNTIL SEATED AND TIGHTEN CLAMP NUT TO 25-35 IN.-LBS.

IN-PROCESS VIEW 3

**PROPRIETARY NOTE**  
 THIS DOCUMENT CONTAINS CONFIDENTIAL AND PROPRIETARY INFORMATION AND ALL DESIGN, MANUFACTURING, REPRODUCTION, USE, PATENT RIGHTS AND SALES RIGHTS ARE EXPRESSLY RESERVED BY SAMTEC, INC. THIS DOCUMENT SHALL NOT BE DISCLOSED, IN WHOLE OR PART, TO ANY UNAUTHORIZED PERSON OR ENTITY NOR REPRODUCED, TRANSFERRED OR INCORPORATED IN ANY OTHER PROJECT IN ANY MANNER WITHOUT THE EXPRESS WRITTEN CONSENT OF SAMTEC, INC.



520 PARK EAST BLVD, NEW ALBANY, IN 47150  
 PHONE: 812-944-6733 FAX: 812-948-5047  
 e-Mail info@SAMTEC.com code 55322

DO NOT SCALE DRAWING

SHEET SCALE: 2:1

DESCRIPTION: SMA JACK, SOLDER CLAMP FOR HARBOUR LL142 CABLE

DWG. NO. PRF01-J-C-EP-142-SS

BY: EVE L 04/29/2019 SHEET 2 OF 2