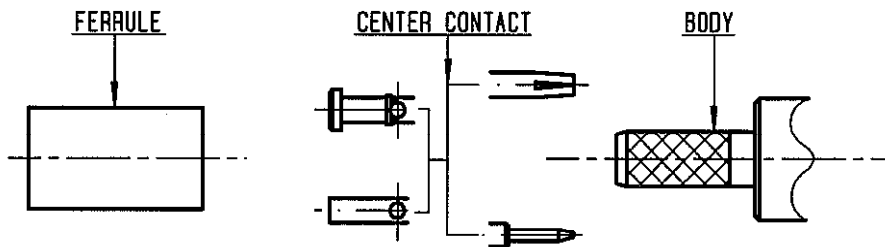
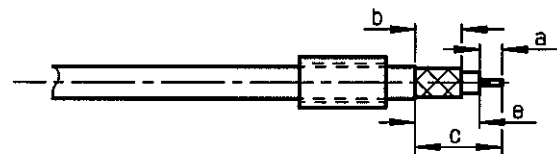


	MM		INCH	
	maxi	mini	maxi	mini
A	11.3	11.2	0.445	0.441
B	2.7	2.6	0.106	0.102
C	12.75	12.65	0.502	0.498

Assembling instruction

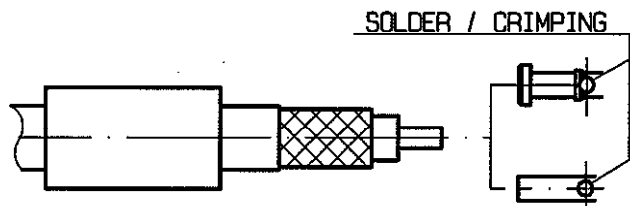


- ① Slide ferrule onto cable
Strip the cable .

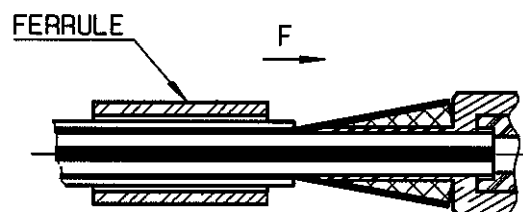


Stripping	a	b	c	d	e
inch	0.098	0.256	0.452	0	0
mm	2.5	6.5	11.5		

- ② Slide center contact on until it bottoms against cable dielectric .
Solder or crimp center contact .
Crimping tool : R282 223 000 (Hex. : 1,73)
or R282 293 000 (M22520/5-01)
+ dies R282 235 011 (M22520/5-11) .



- ③ Fan the braid .
Slide cable into the body until bottoms against insulator .
Slide ferrule over the braid .
(In direction F)



- ④ Crimp the ferrule with crimping tool
R 282 223 000 (Hex. : 5.4)
or R282 293 000 (M22520/5-01)
+ dies R282 235 011 (M22520/5-11)

