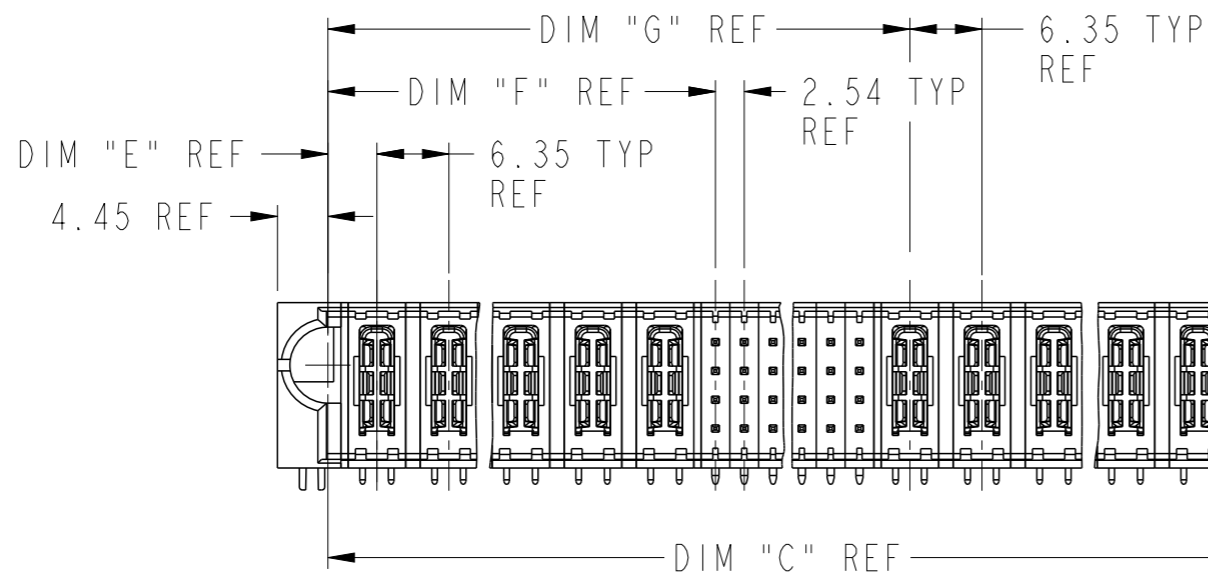
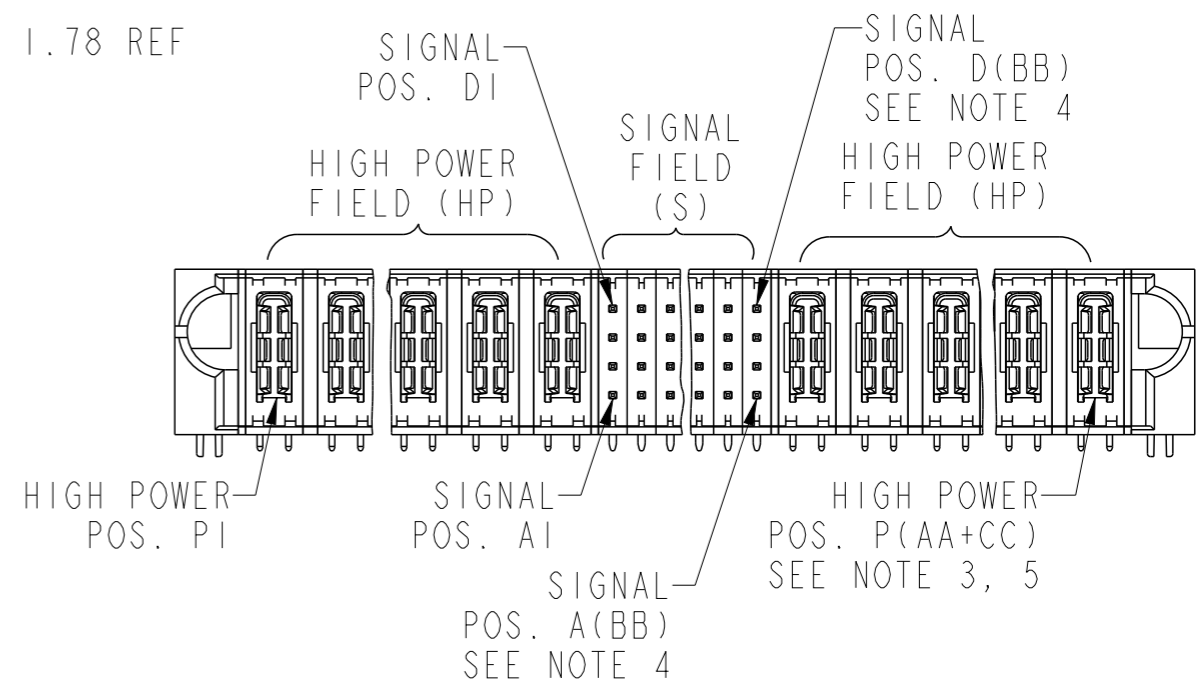
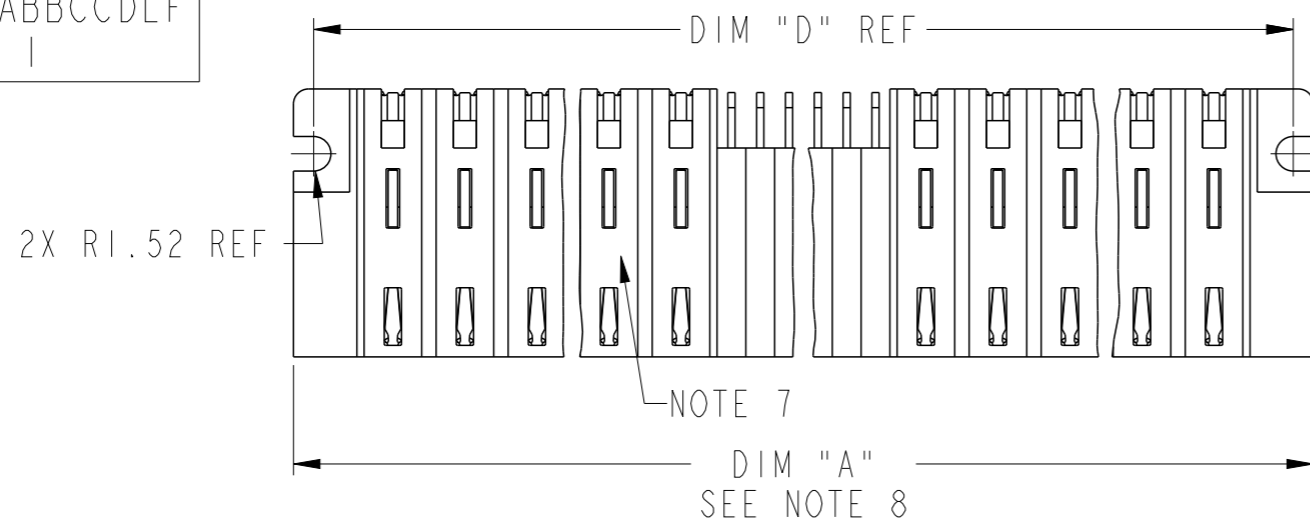
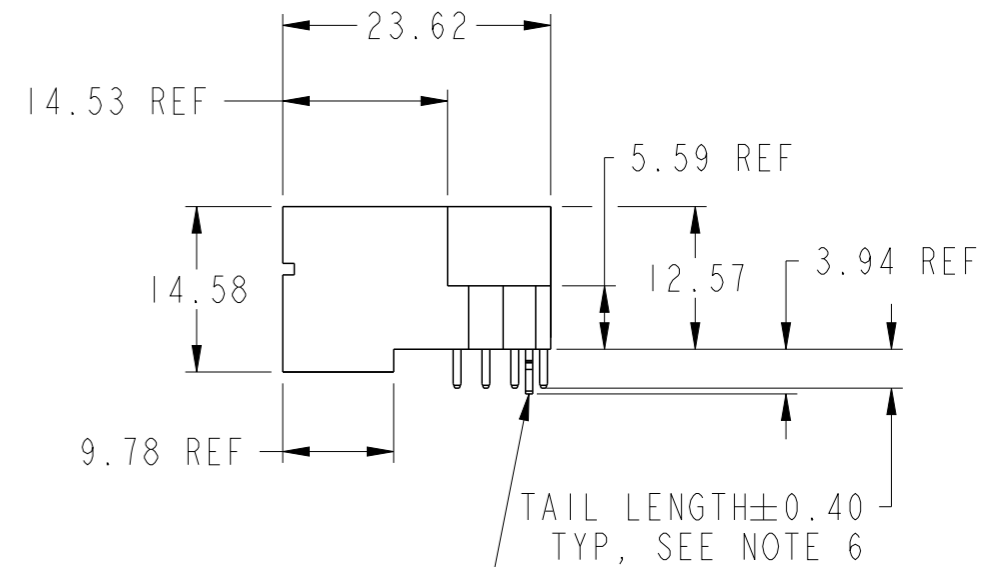


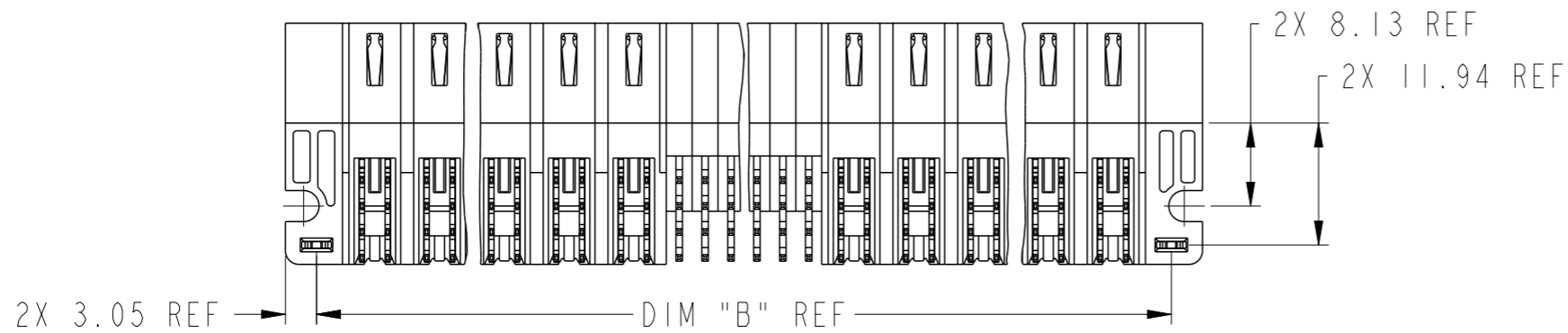
PRODUCT NUMBER  
10121750-AABBCCDLF  
NOTE 1



2X 7.06 REF  
TO PCB  
SURFACE



HOLD DOWN  
2X IF SELECTED  
SEE NOTE 6



spec ref	*		
tolerance std	ASME Y14.5	TOLERANCES UNLESS OTHERWISE SPECIFIED	
surface	linear	0.X	±0.5
		0.XX	±0.25
		0.XXX	±0.10
ASME Y14.5	angular	0°	±2°

dr	Peng-Bing Fu	2012/09/12
eng	Helen Zhang	2013/05/21
chr	Shao-Qi Kuang	2013/05/21
appr	Pei-Ming Zheng	2013/05/21

projection	MM	size	A3	scale	3:2
product family	PwrBlade+	ecn no	-	rel level	Released
POWER / SIGNAL / POWER	RA HEADER WITH HALF GUIDE PIN	dwg no	10121750	rev	A
www.fci.com	cat. no.	Product - Customer Drw	sheet 1 of 3		

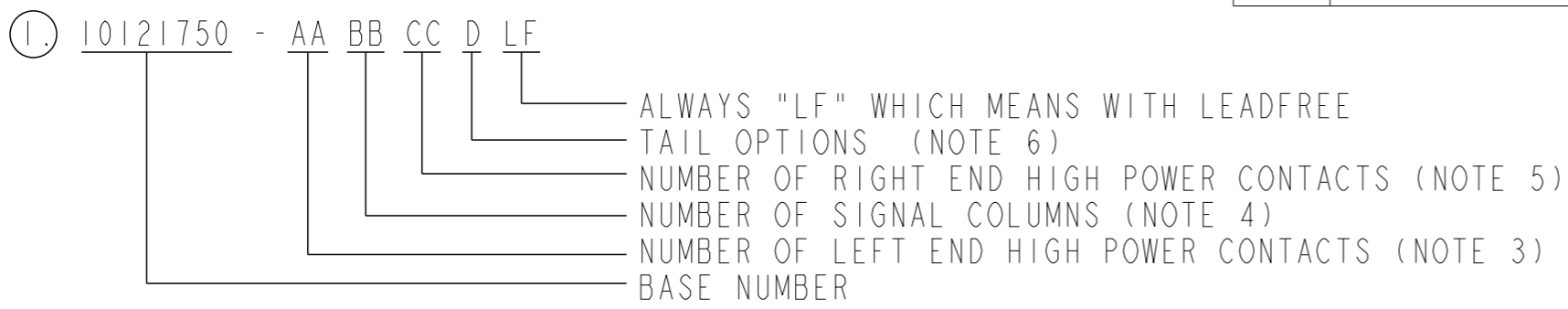


Copyright FCI.

PRODUCT NUMBER  
10121750-AABBCCDLF  
NOTE 1

ITEM	CONFIGURATIONS	DIM	LENGTH FORMULAS (SEE NOTE 8)
1	HP + S + HP	DIM "A"	6.35 x AA + 2.54 x BB + 6.35 x CC + 11.18 (NOTE 8)
2	HP + S	DIM "B"	DIM "A" - 6.1
3	S + HP	DIM "C"	DIM "A" - 8.89
4	S	DIM "D"	DIM "A" - 3.56
5	HP	DIM "E"	4.32(EXCLUDE ITEM 3 & 4)
		DIM "F"	6.35 x AA + 2.41(EXCLUDE ITEM 5)
		DIM "G"	6.35 x AA + 2.54 x BB + 4.32(EXCLUDE ITEM 2 & 4 & 5)
		DIM "H"	DIM "A" + 0.76
		DIM "J"	5.72(EXCLUDE ITEM 3 & 4)
		DIM "K"	6.35 x AA + 5.08(EXCLUDE ITEM 5)
		DIM "L"	6.35 x AA + 2.54 x BB + 5.72(EXCLUDE ITEM 2 & 4 & 5)

CONNECTOR NOTES:



2. MATERIAL:  
 -HOUSING - GLASS FILLED WITH HIGH TEMP THERMOPLASTIC, UL94V-0.  
 -SIGNAL CONTACT - COPPER ALLOY.  
 -POWER CONTACT - HIGH CONDUCTIVITY COPPER ALLOY.

- ③ LEFT END HIGH POWER CONTACTS, 00 TO 28 AVAILABLE. MAXIMUM OF 28 HIGH POWER CONTACTS PER CONNECTOR.
- ④ SIGNAL CONTACTS, 00 TO 37 COLUMNS AVAILABLE.
- ⑤ RIGHT END HIGH POWER CONTACTS, 00 TO 28 AVAILABLE. MAXIMUM OF 28 HIGH POWER CONTACTS PER CONNECTOR.
- ⑥ TAIL OPTIONS:  
 1: 3.43 SOLDER TO BOARD WITH HOLD DOWN  
 2: 3.43 SOLDER TO BOARD WITHOUT HOLD DOWN  
 3: 3.05 PRESS FIT TO BOARD WITH HOLD DOWN  
 4: 3.05 PRESS FIT TO BOARD WITHOUT HOLD DOWN  
 5: 4.19 SOLDER TO BOARD WITH HOLD DOWN  
 6: 4.19 SOLDER TO BOARD WITHOUT HOLD DOWN  
 7: 4.19 PRESS FIT TO BOARD WITH HOLD DOWN  
 8: 4.19 PRESS FIT TO BOARD WITHOUT HOLD DOWN

- ⑦ "FCI", PART NUMBER AND DATE CODE TO BE MARKED ON THIS SURFACE. THE MARK CAN BE OMITTED IF THERE IS NOT ENOUGH SPACE ON THIS SURFACE.
- ⑧ THE MAXIMUM OVERALL LENGTH (DIM A) OF A PART IS 203MM.
- 9. PLATING SPECIFICATION REFER TO FCI 10116351.

10. PRODUCT SPECIFICATION REFER TO FCI GS-12-658.  
 APPLICATION SPECIFICATION REFER TO FCI GS-20-141.  
 PRODUCT PACKAGED IN TRAYS, REFER TO FCI GS-14-1502.

PCB NOTES:

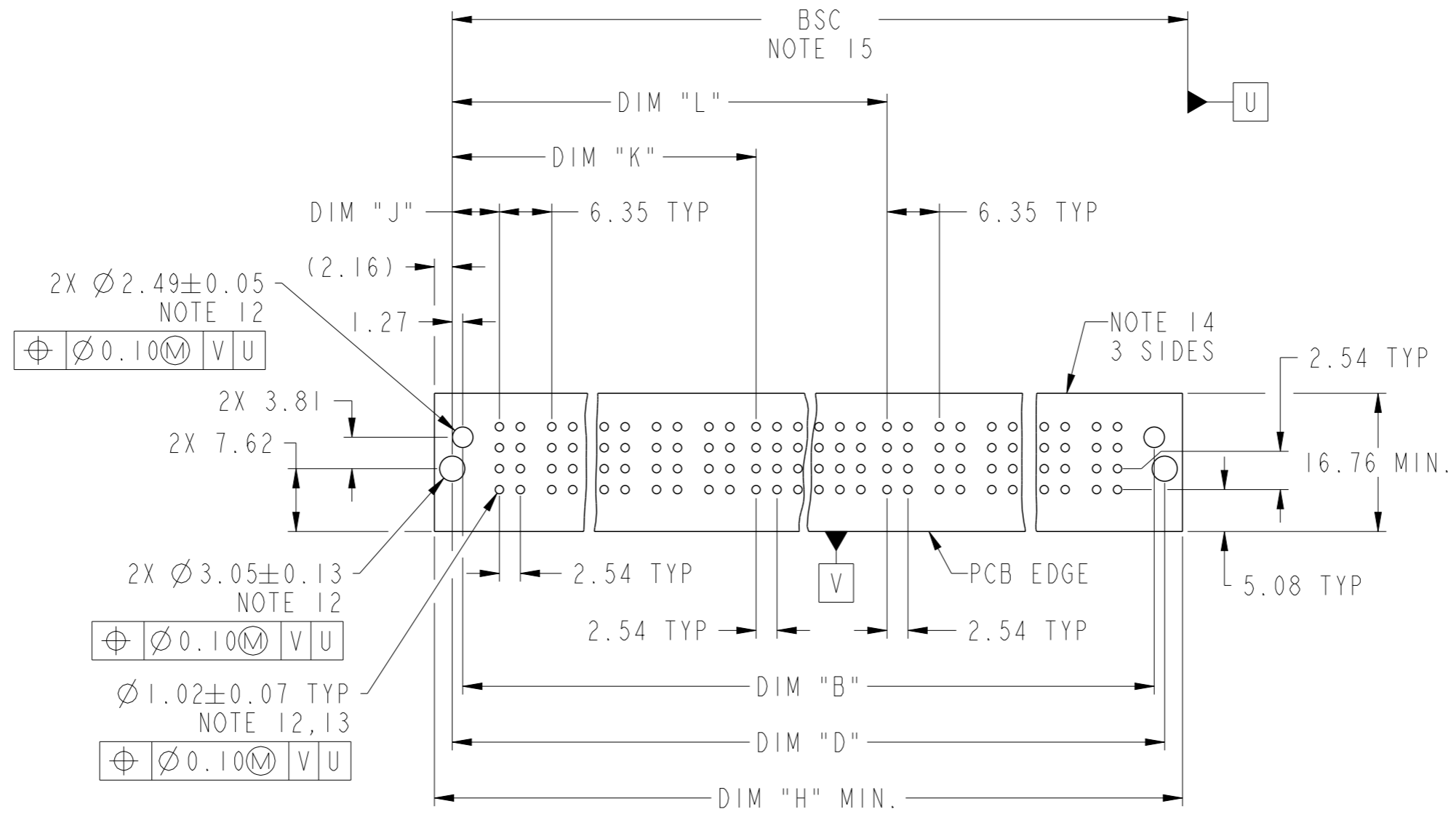
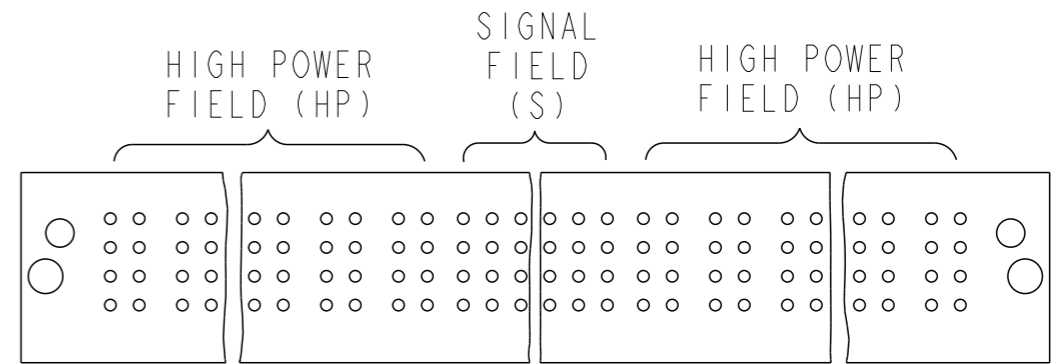
- 11. ALL DIMENSIONS ARE BASIC UNLESS OTHERWISE SPECIFIED.
- ⑫ ALL HOLE DIAMETERS ARE FINISHED HOLE SIZES.
- ⑬ 1.15±0.025MM DRILLED HOLE PLATED WITH 0.00762MM MIN Sn OVER 0.0254-0.0762MM Cu PLATING TO ACHIEVE A 1.02±0.07MM HOLE.
- ⑭ DENOTES CONNECTOR KEEP OUT ZONE.
- ⑮ DATUM AND BASIC DIMENSIONS WERE ESTABLISHED BY CUSTOMER.



Copyright FCI.

dr	Peng-Bing Fu	2012/09/12		MM	size	A3	scale	3:2
eng	Helen Zhang	2013/05/21			ecn no	-		
chr	Shao-Qi Kuang	2013/05/21			product family	PwrBlade+	rel level	Released
appr	Pei-Ming Zheng	2013/05/21				POWER / SIGNAL / POWER	dwg no	10121750
www.fci.com		cat. no.	Product - Customer Drw		sheet 2 of 3			

PRODUCT NUMBER  
10121750-AABBCCDLF  
NOTE 1



2X  $\varnothing 2.49 \pm 0.05$   
NOTE 12  
 $\varnothing 0.10 \text{ (M)}$  V U

2X  $\varnothing 3.05 \pm 0.13$   
NOTE 12  
 $\varnothing 0.10 \text{ (M)}$  V U

$\varnothing 1.02 \pm 0.07$  TYP  
NOTE 12, 13  
 $\varnothing 0.10 \text{ (M)}$  V U

RECOMMENDED PCB LAYOUT

dr	Peng-Bing Fu	2012/09/12	projection	MM	size	A3	scale	3:2
eng	Helen Zhang	2013/05/21		← →	ecn no		-	
chr	Shao-Qi Kuang	2013/05/21			rel level		Released	
appr	Pei-Ming Zheng	2013/05/21	product family	PwrBlade+				
			POWER / SIGNAL / POWER		dwg no	10121750		rev
www.fci.com			RA HEADER WITH HALF GUIDE PIN				A	
cat. no.			Product - Customer Drw			sheet 3 of 3		