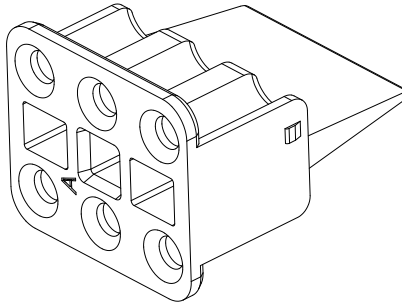
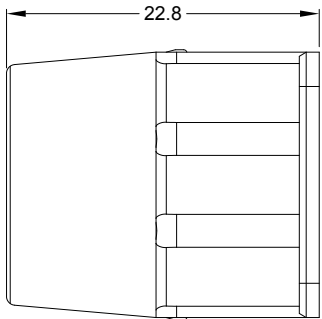
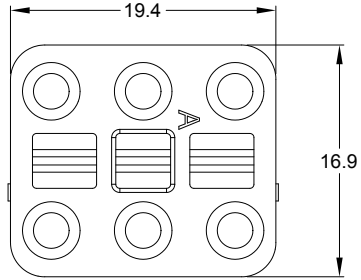
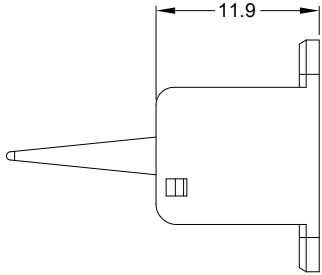



| REVISIONS |     |                     |           |       |       |
|-----------|-----|---------------------|-----------|-------|-------|
| REV       | ECO | DESCRIPTION         | DATE      | BY    | APPR  |
| A1        | --  | RELEASE NEW DRAWING | 18/MAR/20 | PETER | TOMMY |

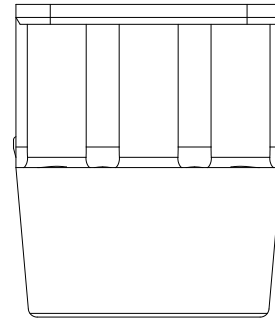
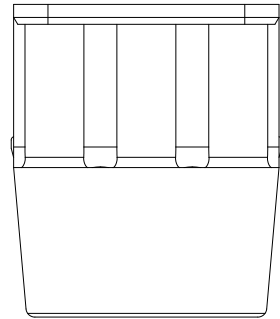
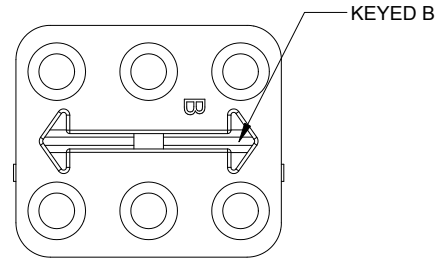
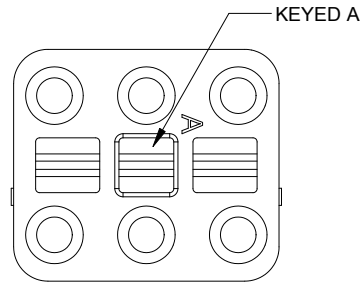


NOTES: UNLESS OTHERWISE SPECIFIED

- MATERIAL: THERMOPLASTIC; COLOR: SEE SHEET 2
- RoHS COMPLIANT
- CAVITIES: 6
- KEYED: SEE SHEET 2
- USE WITH CONNECTORS ATP06-6S\*  
(\* = MODIFICATIONS AND COLORS)
- ALL DIMENSIONS ARE FOR REFERENCE USE ONLY.

| QUANTITY   | AWP-6SX | PART NUMBER  |                          | DESCRIPTION   | ITEM                         |
|--|---------|--|--------------------------|---|------------------------------|
| <b>MATERIALS LIST</b>  |         |  |                          |   |                              |
| <b>UNLESS OTHERWISE SPECIFIED</b><br>1) All dimensions are in metric(mm).<br>2) Tolerances are as follows:<br>1 PL DEC ±0.30    Fractions ±1/64<br>2 PL DEC ±0.15    Angles ±1°<br>3 PL DEC ±0.08<br>3) Note reference =  |         | <b>SIGNATURES</b><br>DRAWN: <b>PETER.YANG</b><br>CHECKED: <b>ORION.LI</b><br>ENGINEER:<br>APPROVAL: <b>TOMMY.XIE</b>   |                          | <b>DATE</b><br>18/MAR/20<br>19/MAR/20<br>20/MAR/20  |                              |
| MATERIAL SPECIFICATIONS:   |         | CUSTOMER:  |                          | <div style="font-size: 24pt; font-weight: bold; margin-bottom: 10px;">Amphenol</div> <hr/> Sine Systems - www.amphenol-sine.com<br>44724 Morley Drive<br>Clinton Township, MI 48036<br><br><b>S-WEDGELOCK, 6 POSITION, ATP SERIES</b> |                              |
| PROCESS SPECIFICATIONS:  |         | THIS DRAWING IS SUPPLIED FOR INFORMATION ONLY. DESIGN FEATURES, SPECIFICATIONS AND PERFORMANCE DATA SHOWN HEREON ARE THE PROPERTY OF THE AMPHENOL CORPORATION. NO RIGHTS OF REPRODUCTION ARE IMPLIED. ALL DIMENSIONS ARE SUBJECT TO NORMAL MANUFACTURING VARIATIONS. |                          |   |                              |
| NEXT ASSY:   |         |  |                          |   |                              |
|  |         | <b>SIZE</b><br><b>A</b>  | <b>TYPE</b><br><b>C-</b> | <b>DWG NO:</b><br><b>AWP-6SX</b>  | <b>REVISION</b><br><b>A1</b> |
|  |         | <b>SCALE:</b> NONE   |                          | SHEET 1 OF 2  |                              |

| REVISIONS |     |                     |           |       |       |
|-----------|-----|---------------------|-----------|-------|-------|
| REV       | ECO | DESCRIPTION         | DATE      | BY    | APPR  |
| A1        | --  | RELEASE NEW DRAWING | 18/MAR/20 | PETER | TOMMY |



**AWP-6SA**  
GRAY

**AWP-6SB**  
BLACK

| QUANTITY | PART NUMBER | DESCRIPTION | ITEM |
|----------|-------------|-------------|------|
|          | AWP-6SX     |             |      |

**MATERIALS LIST**

|   |                                 |                                 |   |                                   |   |  |
|---|---------------------------------|---------------------------------|---|-----------------------------------|---|--|
| <p><b>UNLESS OTHERWISE SPECIFIED</b></p> <p>1) All dimensions are in metric(mm).<br/>                 2) Tolerances are as follows:<br/>                 1 PL DEC ±0.30<br/>                 2 PL DEC ±0.15<br/>                 3 PL DEC ±0.08</p> <p>3) Note reference = </p> | <p><b>SIGNATURES</b></p>        |                                 | <p><b>DATE</b></p>  |                                   | <h1>Amphenol</h1> <p>Sine Systems - www.amphenol-sine.com<br/>                 44724 Morley Drive<br/>                 Clinton Township, MI 48036</p> |  |
|   | <p>DRAWN: <b>PETER.YANG</b></p> | <p>CHECKED: <b>ORION.LI</b></p> | <p>ENGINEER:</p>  | <p>APPROVAL: <b>TOMMY.XIE</b></p> |   | <p>18/MAR/20</p> <p>19/MAR/20</p> <p>20/MAR/20</p> |
|   | <p>MATERIAL SPECIFICATIONS:</p> |                                 | <p>CUSTOMER:</p>  |                                   |   |  |
|   | <p>PROCESS SPECIFICATIONS:</p>  |                                 | <p>THIS DRAWING IS SUPPLIED FOR INFORMATION ONLY. DESIGN FEATURES, SPECIFICATIONS AND PERFORMANCE DATA SHOWN HEREON ARE THE PROPERTY OF THE AMPHENOL CORPORATION. NO RIGHTS OF REPRODUCTION ARE IMPLIED. ALL DIMENSIONS ARE SUBJECT TO NORMAL MANUFACTURING VARIATIONS.</p> |                                   |   |  |
| <p>NEXT ASSY:</p>   | <p>SCALE: <b>NONE</b></p>       |                                 | <p>SIZE <b>A</b> TYPE <b>C-</b></p>   | <p>DWG NO: <b>AWP-6SX</b></p>     | <p>REVISION <b>A1</b></p>   |  |

S-WEDGELOCK, 6 POSITION, ATP SERIES