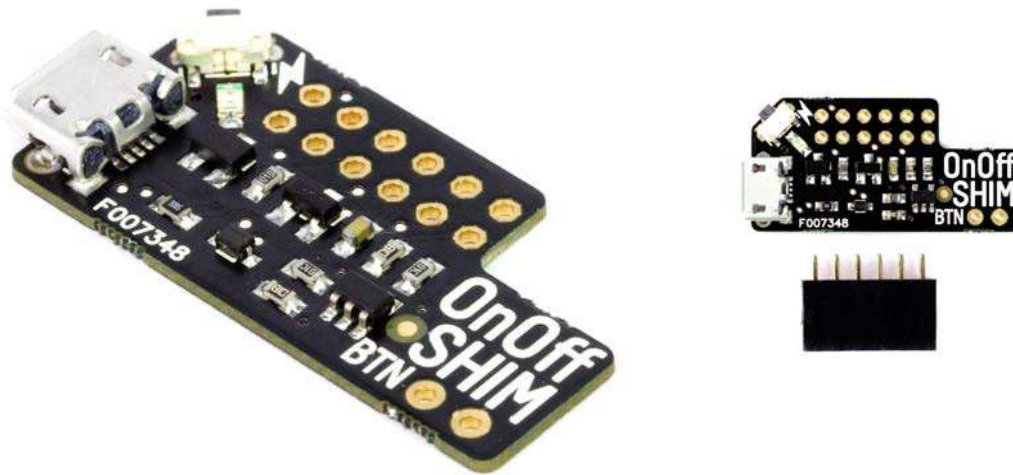


OnOff SHIM

PIM269



Add a tiny yet convenient power switch to your Pi with OnOff SHIM!

Our SHIMs (Shove Hardware in the Middle) are a new range of boards designed to be small, affordable, and handy. They're just 1mm thick (the bare board, not including mounted components) and designed to be soldered straight onto the GPIO pins of your Pi, if you wish, so that you can use them with HATs and pHATs on top.

Usage

Just plug your micro-USB power supply into the micro-B connector on OnOff SHIM, and then press the button once to switch on power and boot up your Pi. After installing our software (details below), you can press the button again to initiate a clean shutdown and completely cut the power to your Pi.

Features

- super-small SHIM-format board
- 1mm thick PCB
- can be used with HATs and pHATs
- corner-mounted push button for on/off
- micro-B connector for power supply
- red status LED
- optional breakout pins to connect an external momentary button
- 2x6 female header included
- supports up to 2.5A power supply
- software daemon to shutdown cleanly
- **requires soldering**

Software

We've put together a one-line-installer to install the clean shutdown daemon. It watches the state of BCM pin 17 and, when pulled low (pressed), it initiates a clean shutdown. Last thing, just before your Pi shuts down, BCM pin 4 is pulled low to completely cut power to your Pi.

To install the software, open a terminal and type `curl`

`https://get.pimoroni.com/onoffshim | bash` to run the one-line-installer