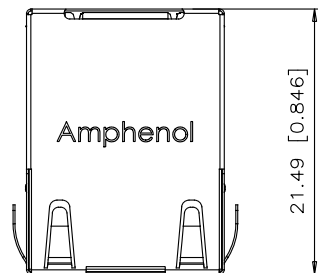


REVISIONS			
REV	DESCRIPTION, ECN, EAR NO.	DATE	APP'D
C	ADD VIEW OF RECOMMENDED PANEL	JAN26/17	A.G
D	UPDATE BACK WALL OF SHIELD	FEB16/17	A.G
E	ADD PACKAGE DRAWING	FEB16/17	A.G



AMPHENOL PART NUMBER: RJE60-188-5X01

GOLD PLATING OPTION
 1=6u" GOLD PLATING
 2=15u" GOLD PLATING
 3=30u" GOLD PLATING
 4=50u" GOLD PLATING

NOTES:

ELECTRICAL:

- VOLTAGE RATING: 125 VAC.
- CURRENT RATING: 1.25 AMP.
- INSULATION RESISTANCE: 500 MEGAOHMS MIN.
- DIELECTRIC STRENGTH: 1000 VAC RMS 60Hz, 1 MIN.
- CATEGORY 6A CHARACTERISTIC:

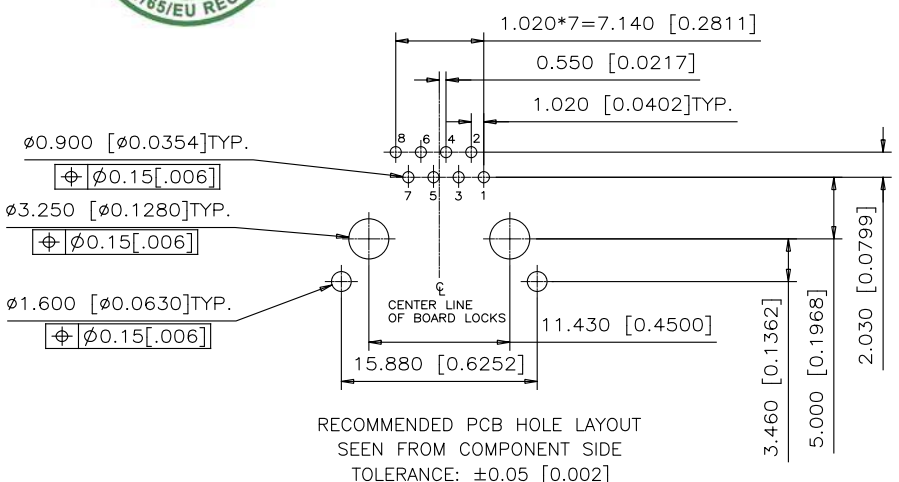
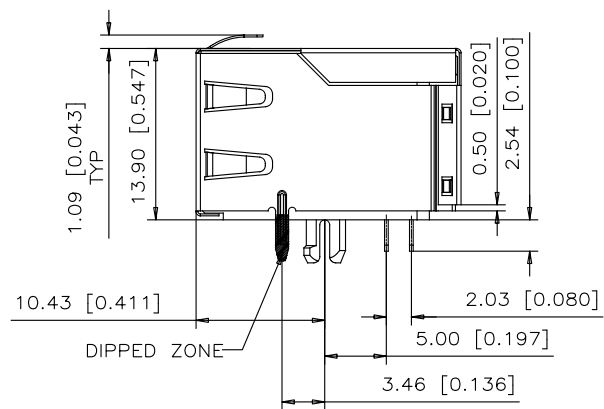
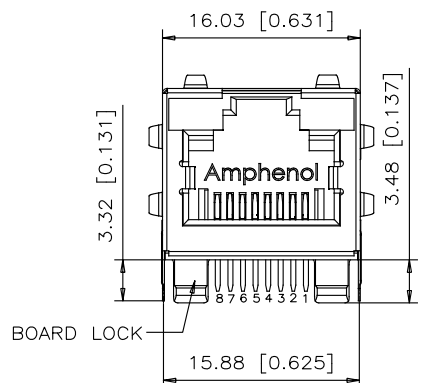
FREQUENCY MHz	NEAR-END CROSS TALK dB, Min.	RETURN LOSS dB, Min.	INSERTION LOSS dB, Max.
1.0	75.0	30.0	0.10
4.0	75.0	30.0	0.10
8.0	75.0	30.0	0.10
10.0	74.0	30.0	0.10
16.0	69.9	30.0	0.10
20.0	68.0	30.0	0.10
25.0	66.0	30.0	0.10
31.25	64.1	30.0	0.11
62.5	58.1	30.0	0.16
100.0	54.0	28.0	0.20
200.0	48.0	22.0	0.28
250.0	46.0	20.0	0.32
300.0	42.9	18.5	0.35
400.0	37.9	16.0	0.40
500.0	34.0	14.0	0.45

MECHANICAL:

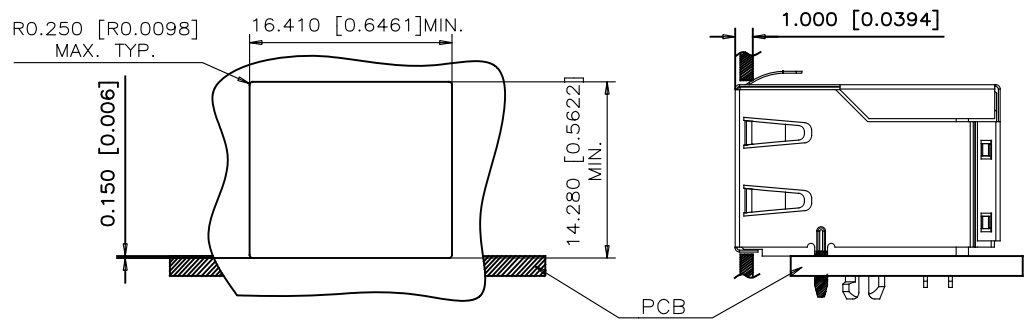
- SHIELD: STAINLESS STEEL, WITH TIN-DIP ON SOLDER TABS.
- HOUSING: HIGH TEMP THERMOPLASTIC. UL 94V-0.
- CONTACT: COPPER ALLOY
 SELECTIVE GOLD PLATING FOR MATING SURFACE,
 50u" NICKEL UNDERPLATE
 100u" MATTE TIN PLATING ON CONTACT SOLDER TAIL.

ENVIRONMENTAL:

- STORAGE: -40° TO +85°.
 - OPERATION: -40° TO +85°.
- MATES WITH MODULAR PLUG CONFORMING TO TIA-1096 STANDARD.
 RECOMMENDED SOLDER PROCESS: WAVE SOLDER, PEAK TEMPERATURE 260° FOR 10 SECOND.



RECOMMENDED PCB HOLE LAYOUT
 SEEN FROM COMPONENT SIDE
 TOLERANCE: ±0.05 [0.002]



RECOMMENDED PANEL CUTOUT

UNLESS SPECIFIED OTHERWISE	DRAWN KELVIN TANG	MAY 19/14
PRIMARY UNITS MILLIMETERS	CHECKED L.CHAN	MAY 19/14
SECONDARY INCHES	M.E. APP'D A.CHAN	MAY 19/14
REFERENCE IN PARENTHESES	Q.A. APP'D	
GENERAL TOLERANCES FOR MM	DWG APP'D A.GREEN	MAY 19/14
1 DECIMAL PLACE ±0.5	ENG. REL. NO.	
2 DECIMAL PLACES ±0.38	REF.	
3 DECIMAL PLACES ±0.10	THIRD ANGLE PROJECTION	DO NOT SCALE DRAWING

Amphenol Canada Corp.
www.amphenolcanada.com

MODULAR JACK, SINGLE PORT, 8P8C, SHIELDED, TAB UP TYPE WITHOUT LED, CAT 6A - RoHS COMPLIANT

DWG NO. P-RJE60-188-5X01

CODE ID NO. 03554 DWG SIZE C SCALE FIT SHEET 1 OF 2

REVISIONS			
REV	DESCRIPTION, ECN, EAR NO.	DATE	APP'D

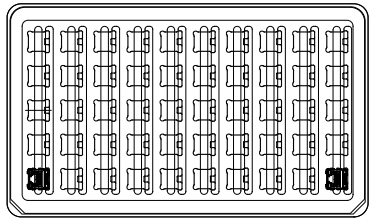
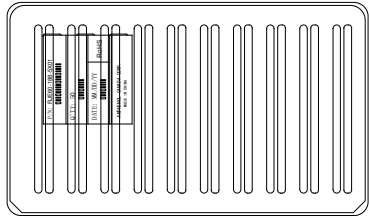
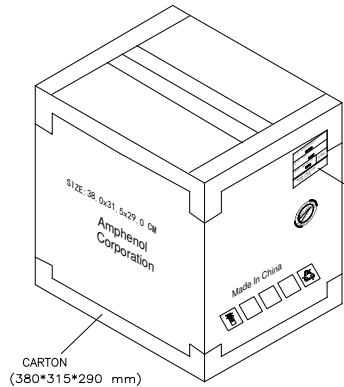


FIGURE 1



CARTON
(380*315*290 mm)

P/N: RJE60-188-5X01 0000000000000000	
Q' TY: 1100 0000000	
DATE: MM/DD/YY 0000000	RoHS
AMPHENOL CANADA CORP. MADE IN CHINA	

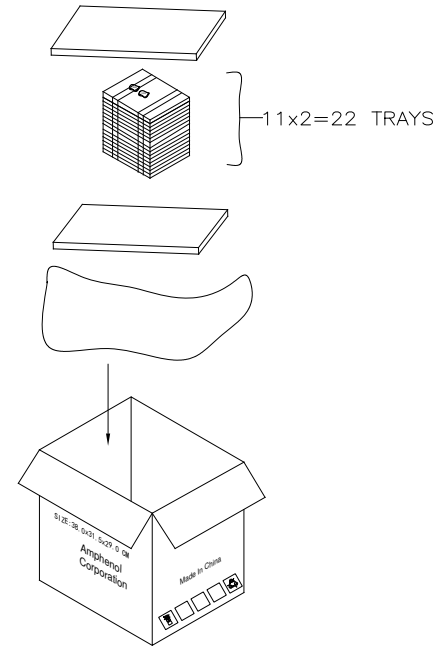


FIGURE 2
CARTON PACKAGING REFERENCE



NOTES:

- ASSEMBLE CONNECTORS INTO TRAY AS SHOWN IN FIG. 1. FULLY LOADED TRAY TO CONTAIN 50 CONNECTORS AND FULLY LOADED CARTON TO CANTAIN 1100 CONNECTORS.
- PLACE THE 11X2 TRAYS INTO CARTONS AS SHOWN IN FIG. 2.
- CLOSE, SEAL AND MARK CARTON WITH PART NUMBER AND QUANTITY. ADD BAR CODE LABEL WHEN APPLICABLE.

THIS DOCUMENT CONTAINS PROPRIETARY INFORMATION AND SUCH INFORMATION MAY NOT BE DISCLOSED TO OTHERS FOR ANY PURPOSE OR USED FOR MANUFACTURING PURPOSES WITHOUT WRITTEN PERMISSION FROM AMPHENOL CANADA CORP.

UNLESS SPECIFIED OTHERWISE	DRAWN	KELVIN TANG	MAY 19/14
PRIMARY UNITS MILLIMETERS	CHECKED	L.CHAN	MAY 19/14
SECONDARY INCHES	M.E. APP'D	A.CHAN	MAY 19/14
REFERENCE IN PARENTHESES	Q.A. APP'D		
GENERAL TOLERANCES FOR MM	DWG APP'D	A.GREEN	MAY 19/14
1 DECIMAL PLACE ±0.5	ENG. REL. NO.		
2 DECIMAL PLACES ±0.38	REF.		
3 DECIMAL PLACES ±0.10	THIRD ANGLE PROJECTION		
	DO NOT SCALE DRAWING		

Amphenol Canada Corp. www.amphenolcanada.com	
MODULAR JACK, SINGLE PORT, 8P8C, SHIELDED, TAB UP TYPE WITHOUT LED, CAT 6A – RoHS COMPLIANT	
DWG NO. P-RJE60-188-5X01	REV E
CODE ID NO. 03554	DWG SIZE C SCALE FIT SHEET 2 OF 2