

PRODUCT NUMBER
10007607-YXX-XXLF

WHEN REQUIRED, ADD SUFFIX LETTER "LF"
INDICATES THE PRODUCT IS RoHS COMPATIBLE
SEE NOTE 5

TOTAL NB OF POSITIONS 02 TO 36

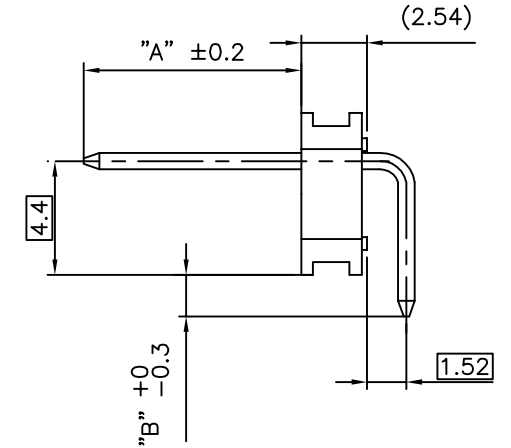
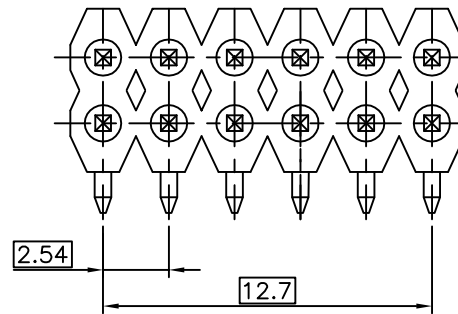
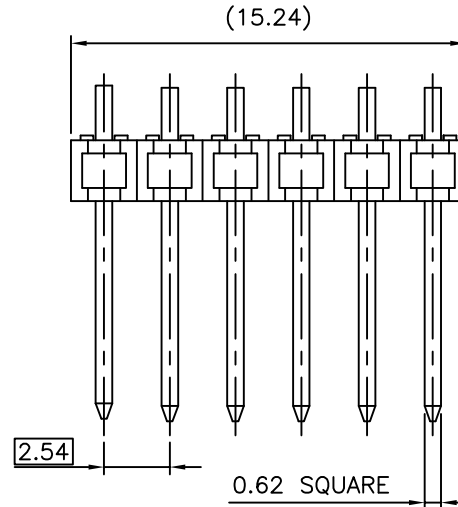
STYLE	DIM "A"	DIM "B"
01	5.8	2.5
02	8.5	1.6
03	11.0	2.5

PLATING

8 = 0.38µm GOLD/GXT ON CONTACT AREA
3.81µm TIN-LEAD ON TAIL

4 = 2.0µm TIN MIN FULL PLATED

- WHEN "LF" IS REQUIRED, 2µm MATTE
TIN OVER 1.27µm MIN NICKEL IS
PROVIDED INSTEAD OF TIN-LEAD



NOTES:

1. HOUSING MAT'L : HIGH TEMPERATURE THERMOPLASTIC. UL94V-0 COLOR: BLACK
2. PIN MATERIAL : PHOSPHOR BRONZE
3. 12N MIN RETENTION IN EITHER DIRECTION
4. PRODUCT PACKAGED IN POLY BAGS.
5. RoHS COMPATIBLE PRODUCT SPECIFICATIONS
 - a - MANUFACTURING PROCESS COMPATIBILITY
 - THE HOUSING WILL WITHSTAND EXPOSURE TO 260°C ±5°C SOLDER BATH TEMPERATURE FOR 5 SECONDS IN A WAVE SOLDER APPLICATION WITH A 1.6mm MIN THICK CIRCUIT BOARD.
 - b - LABELLING:
 - MEETS PACKAGING SPECS AS PER GS-14-920
 - c - LEGAL STATEMENT : SEE GS-22-008

mat'l. code		surface	tolerance	projection	product family
ltr		ISO 1302	ISO 406 ISO 1101		BSTIK
ecn no		tolerances unless otherwise specified		title	
A	F06-0109	LMU	06.01.17	HDR SR RA	
B	F06-0207	LMU	06.07.27	BODY DR	
C	F07-0182	LMU	07.05.09	scale 5:1	sheet 1 of 1 size
D	F08-0148	RTR	08.03.31	10007607 A3	
E	F10-0059	LMU	10.05.31	type CUSTOMER Drawing	
sheet index		revision sheet	FCJ		