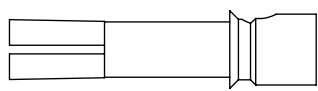
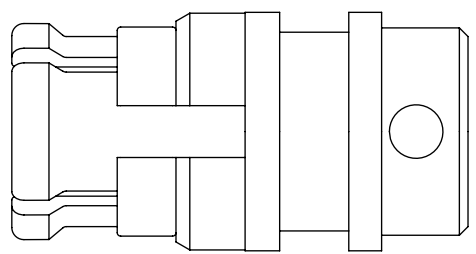
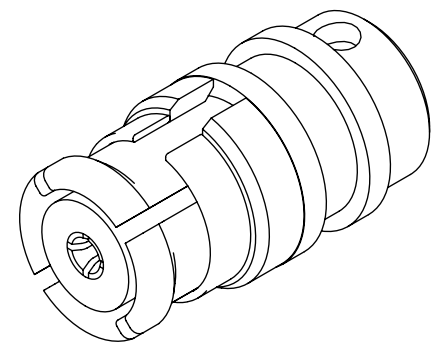
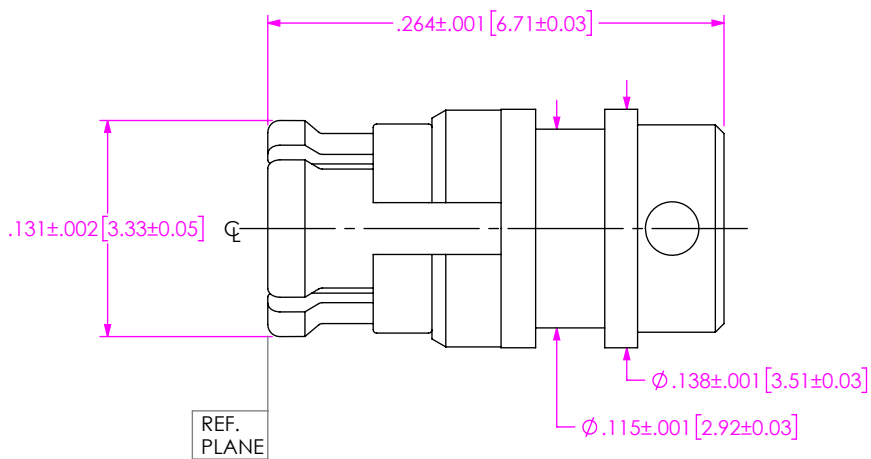


DO NOT SCALE FROM THIS PRINT

DESIGNED & DIMENSIONED IN INCHES[MILLIMETERS]

PRF00-J-C-EE-085A-SD

SERIES
-00: SMP
GENDER
-J: JACK
TYPE
-C: CABLE
FINISH
-EE: 50µ" EXTRA HEAVY GOLD CENTER CONTACT, 50µ" EXTRA HEAVY GOLD OUTER CONTACT
TERMINATION
-D: DIRECT SOLDER
ORIENTATION
-S: STRAIGHT
CABLE TYPE
-085A: .085" SEMI-RIGID




EXPLODED VIEW NOT TO SCALE (FOR CLARITY ONLY)

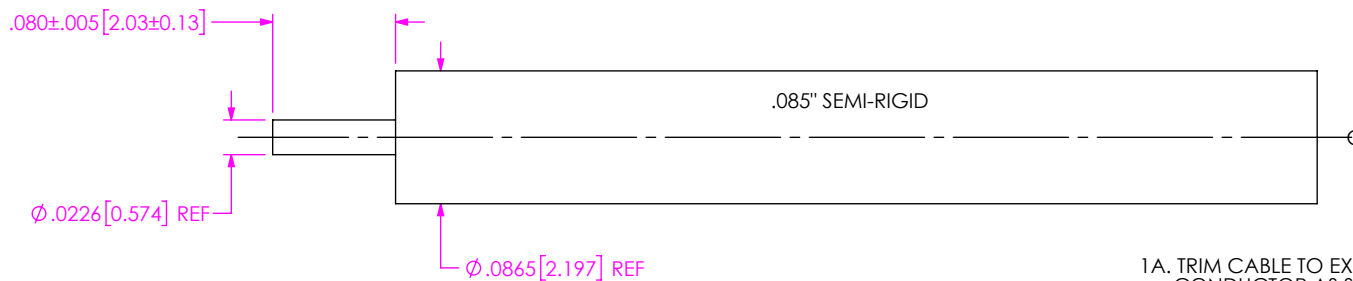
F:\DWG\MISC\MKTG\PRF00-J-C-EE-085A-SD-MKT.SLDDRW

NOTES:

- MATERIAL:
CONTACT, BODY, ANTI-ROCK RING, EMI RING: BERYLLIUM COPPER
INSULATOR, DIELECTRIC STOP: PTFE
- FINISH:
CONTACT, BODY, ANTI-ROCK RING, EMI RING: 50µ" MIN. GOLD OVER 50µ" MIN. NICKEL PLATE
- PCI P/N: 3355.

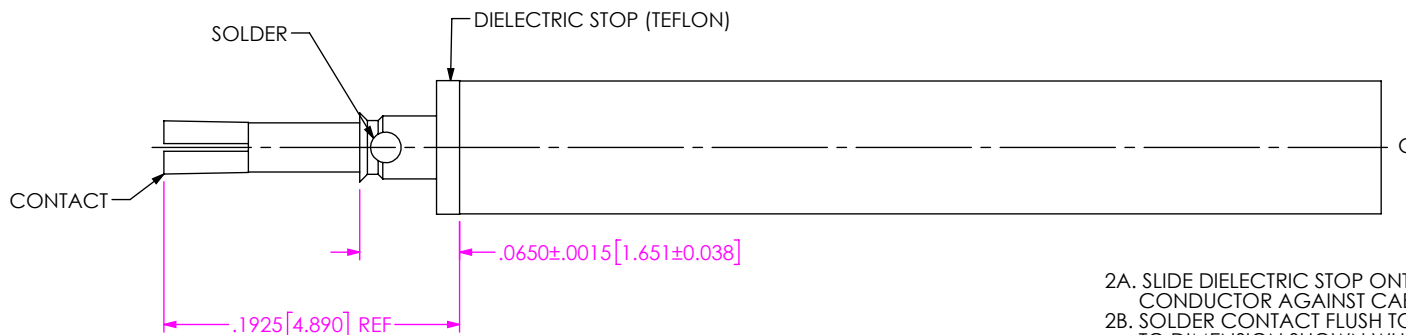
<p>UNLESS OTHERWISE SPECIFIED, DIMENSIONS ARE IN INCHES. TOLERANCES ARE:</p> <p>DECIMALS ANGLES</p> <p>.XX: ±.01 [0.3] 1°</p> <p>.XXX: ±.005 [0.13]</p> <p>.XXXX: ±.0005 [0.013]</p>	<p>PROPRIETARY NOTE</p> <p>THIS DOCUMENT CONTAINS CONFIDENTIAL AND PROPRIETARY INFORMATION AND ALL DESIGN, MANUFACTURING, REPRODUCTION, USE, PATENT RIGHTS AND SALES RIGHTS ARE EXPRESSLY RESERVED BY SAMTEC, INC. THIS DOCUMENT SHALL NOT BE DISCLOSED, IN WHOLE OR PART, TO ANY UNAUTHORIZED PERSON OR ENTITY NOR REPRODUCED, TRANSFERRED OR INCORPORATED IN ANY OTHER PROJECT IN ANY MANNER WITHOUT THE EXPRESS WRITTEN CONSENT OF SAMTEC, INC.</p>	 <p>520 PARK EAST BLVD, NEW ALBANY, IN 47150 PHONE: 812-944-6733 FAX: 812-948-5047 e-Mail info@SAMTEC.com code 55322</p>
<p>DO NOT SCALE DRAWING</p>	<p>SHEET SCALE: 6:1</p>	<p>DESCRIPTION: SMP SOCKET FOR .085" LOW LOSS CABLE, .264 LG</p>
<p>DWG. NO. PRF00-J-C-EE-085A-SD</p>		<p>BY: EVE L 04/28/2019 SHEET 1 OF 2</p>

CABLE APPLICATION VIEWS



IN-PROCESS VIEW 1

1A. TRIM CABLE TO EXPOSE CENTER CONDUCTOR AS SHOWN



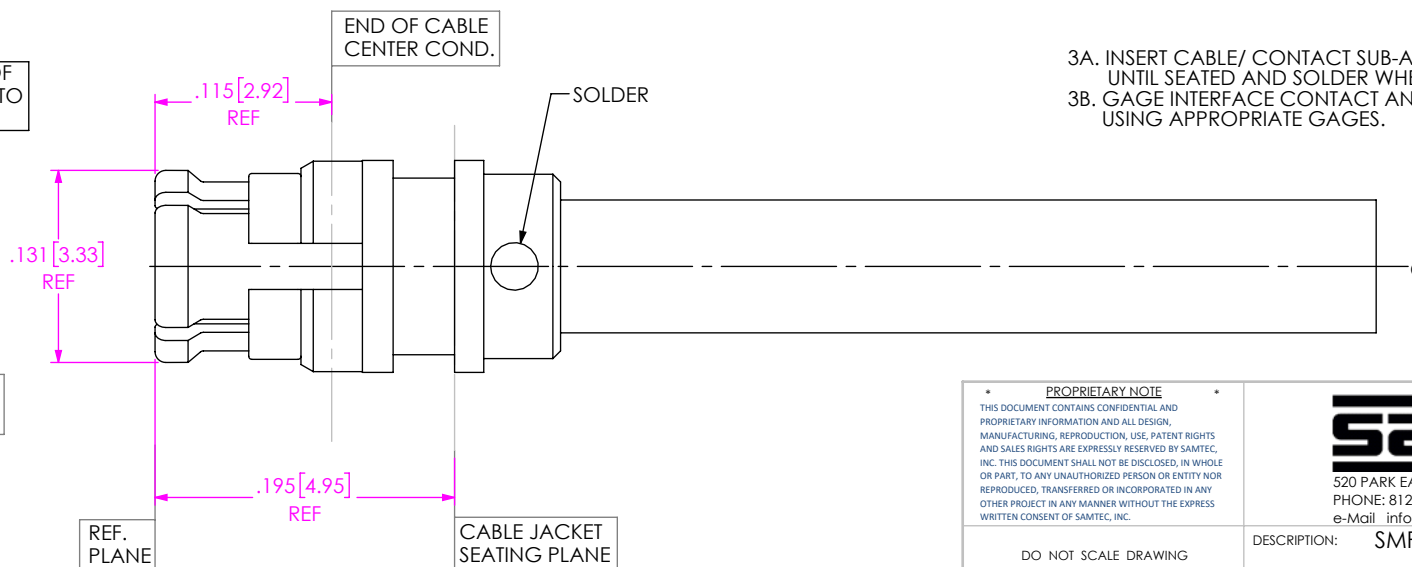
IN-PROCESS VIEW 2

2A. SLIDE DIELECTRIC STOP ONTO CABLE CENTER CONDUCTOR AGAINST CABLE JACKET AS SHOWN.
2B. SOLDER CONTACT FLUSH TO DIELECTRIC STOP TO DIMENSION SHOWN WHERE INDICATED.

DISTANCE FROM END OF CABLE CENTER COND. TO REF PL. IS .115(REF.)

REF. RF LOGIC PART NUMBER 121F-086-P1

REF. INSERTION AND REMOVAL TOOL 450066



3A. INSERT CABLE/ CONTACT SUB-ASSEMBLY INTO CONNECTOR UNTIL SEATED AND SOLDER WHERE SHOWN.
3B. GAGE INTERFACE CONTACT AND INSULATOR RECESSION USING APPROPRIATE GAGES.

IN-PROCESS VIEW 3

PROPRIETARY NOTE
THIS DOCUMENT CONTAINS CONFIDENTIAL AND PROPRIETARY INFORMATION AND ALL DESIGN, MANUFACTURING, REPRODUCTION, USE, PATENT RIGHTS AND SALES RIGHTS ARE EXPRESSLY RESERVED BY SAMTEC, INC. THIS DOCUMENT SHALL NOT BE DISCLOSED, IN WHOLE OR PART, TO ANY UNAUTHORIZED PERSON OR ENTITY NOR REPRODUCED, TRANSFERRED OR INCORPORATED IN ANY OTHER PROJECT IN ANY MANNER WITHOUT THE EXPRESS WRITTEN CONSENT OF SAMTEC, INC.



520 PARK EAST BLVD, NEW ALBANY, IN 47150
PHONE: 812-944-6733 FAX: 812-948-5047
e-Mail info@SAMTEC.com code 55322

DO NOT SCALE DRAWING

SHEET SCALE: 8:1

DESCRIPTION: SMP SOCKET FOR .085" LOW LOSS CABLE, .264 LG

DWG. NO. PRF00-J-C-EE-085A-SD

BY: EVE L 04/28/2019 SHEET 2 OF 2