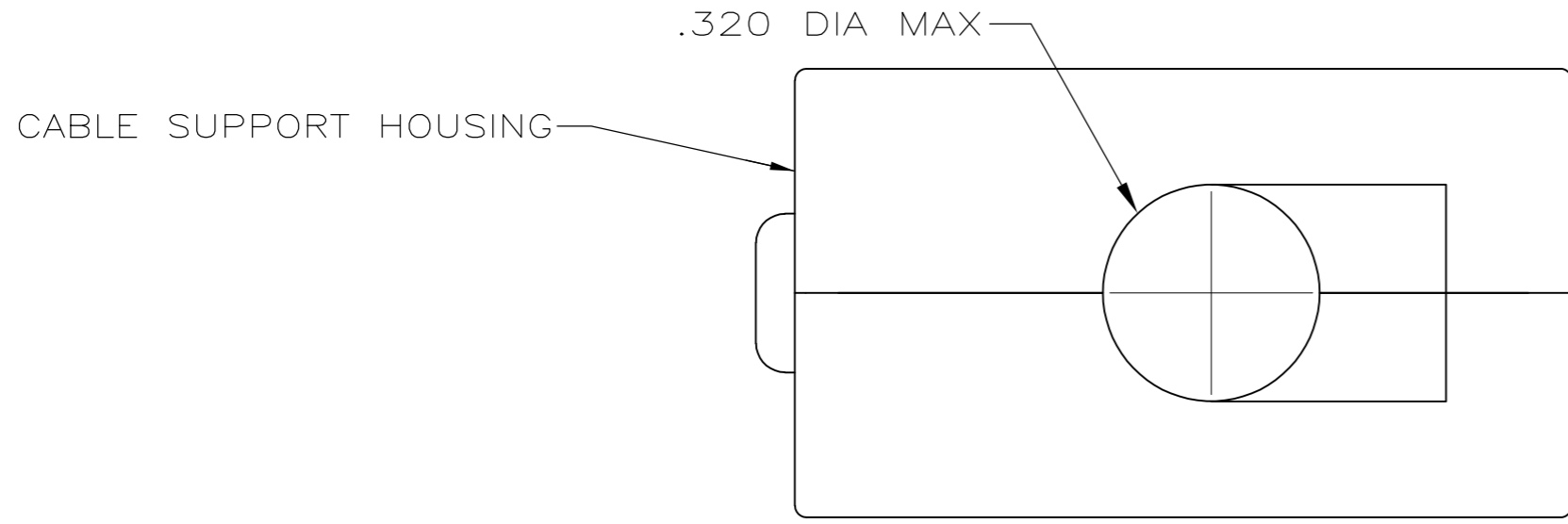
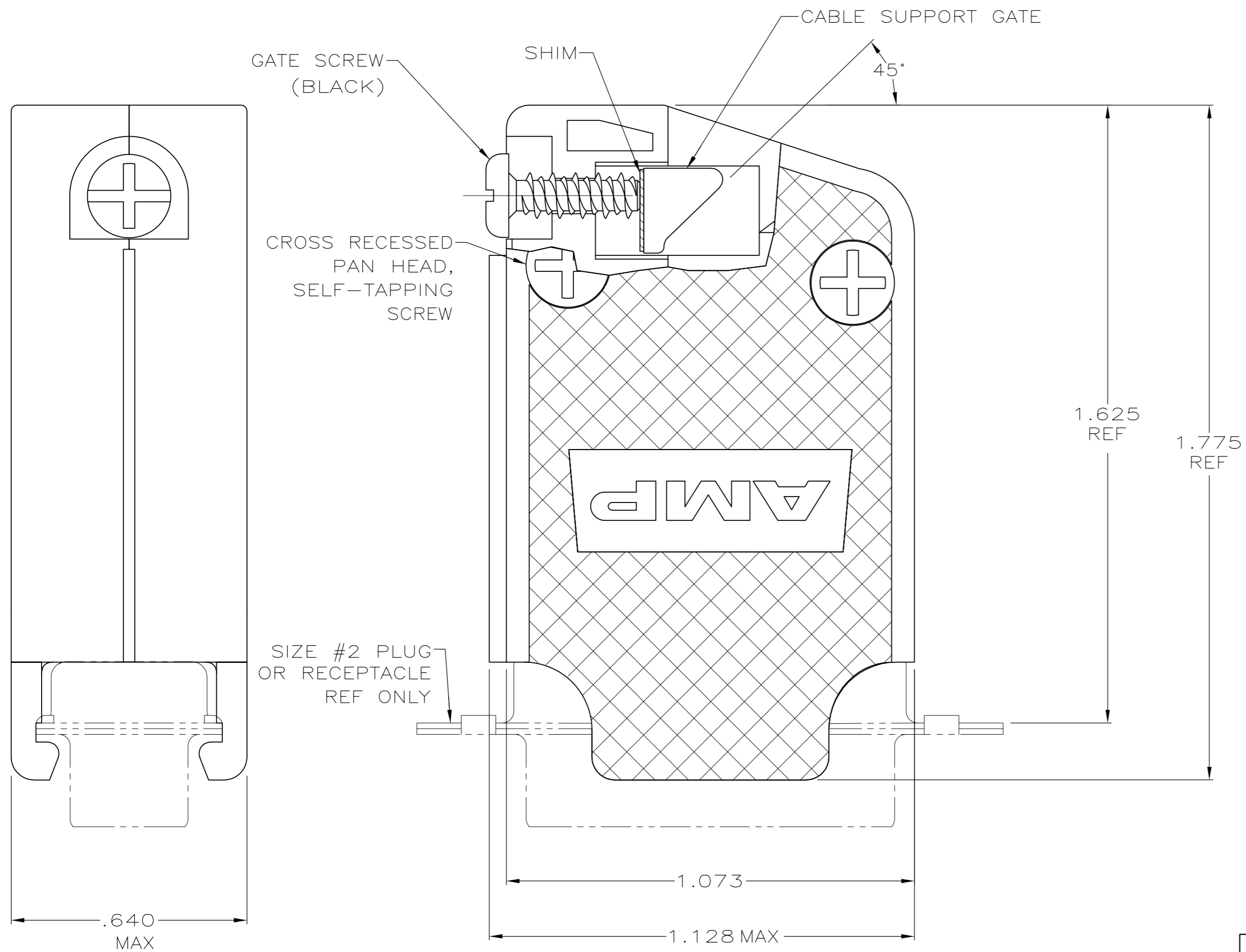


THIS DRAWING IS UNPUBLISHED. RELEASED FOR PUBLICATION
 © COPYRIGHT 2006 By - ALL RIGHTS RESERVED.

LOC	DIST	REVISIONS					
GP	00	P	LTR	DESCRIPTION	DATE	DWN	APVD
		P		REVISED PER ECO-11-004835	11MAR11	RK	HMR



- PARTS PACKAGED UNASSEMBLED.
 - COMPONENTS INDIVIDUALLY BULK PACKED & SHIPPED AS A UNIT PACKAGE KIT.
- 3 MOLDED PARTS: POLYPROPYLENE, BLACK.
SHIM: BRASS.
SCREWS: COLD ROLLED STEEL.
- 4 GATE SCREWS: BLACK ZINC PROSPHATE
SELF TAPPING SCREWS: ZINC PLATED CLEAR CHROMATE COATING.



COMBINATION DRIVE	2	5205730-3
COMBINATION DRIVE	AS SHOWN	5205730-1
SCREW VERSION	PACKAGING	PART NO

THIS DRAWING IS A CONTROLLED DOCUMENT.		DWN R.RICHARDSON 30AUG05		
DIMENSIONS: INCHES		CHK C. ROHDE 30AUG05		
TOLERANCES UNLESS OTHERWISE SPECIFIED:		APVD M.WALMSLEY 30AUG05	NAME	
0 PLC ± -		PRODUCT SPEC	SELF TAPPED 45/180 DEG CABLE SUPPORT CLAMSHELL, SIZE 2 ASSEMBLY, AMPLIMITE HD-20	
1 PLC ± -		APPLICATION SPEC	SIZE A2	CAGE CODE 00779
2 PLC ± -		WEIGHT -	DRAWING NO C=5205730	RESTRICTED TO -
3 PLC ± .005		CUSTOMER DRAWING	SCALE 4:1	SHEET 1 of 1
4 PLC ± -			REV P	
ANGLES ± -				
FINISH				