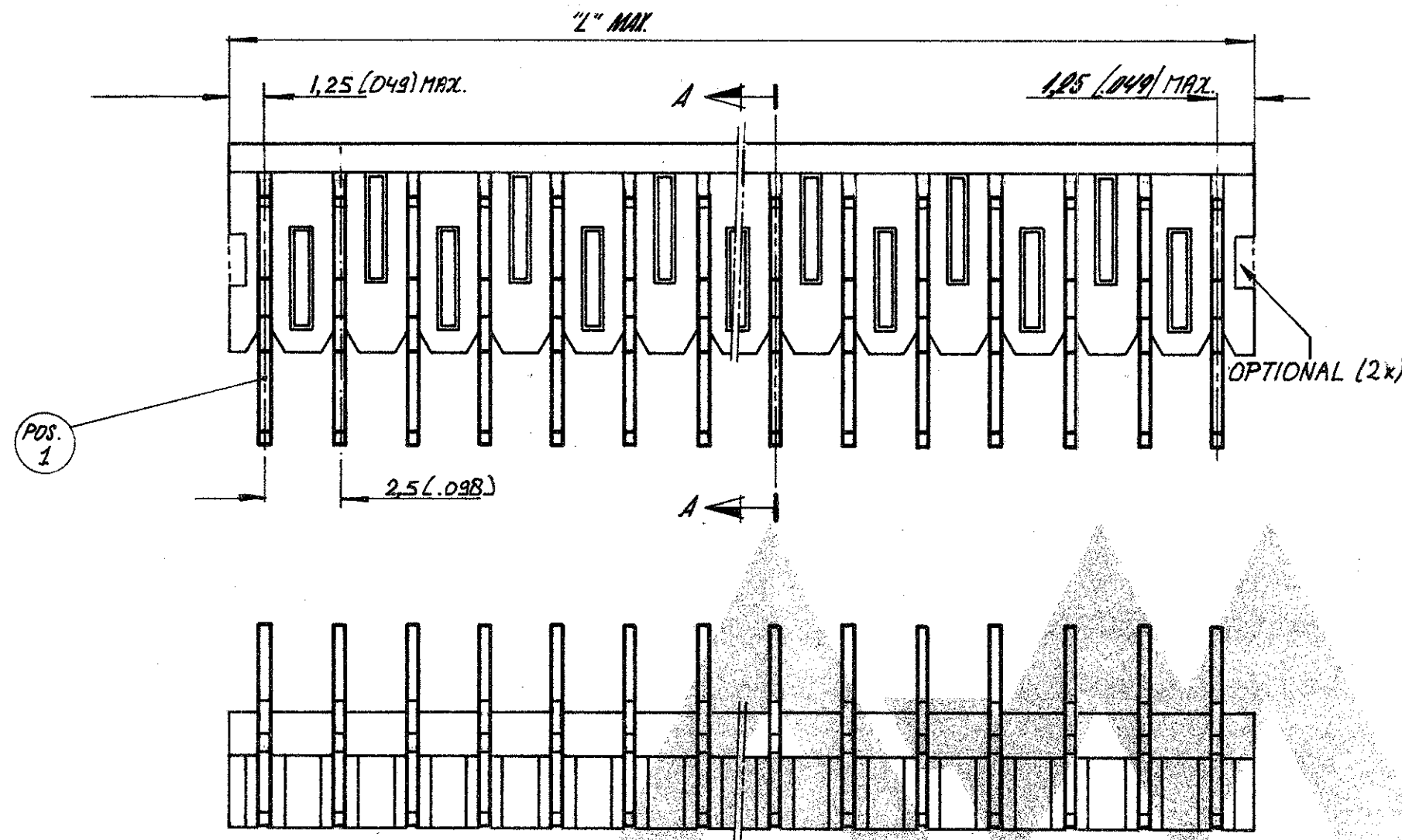


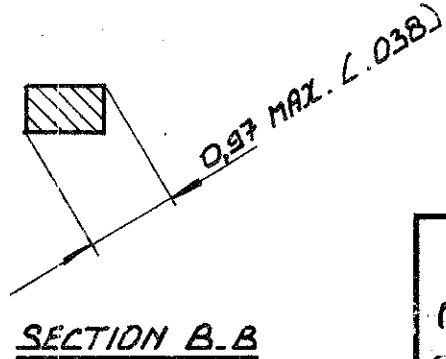
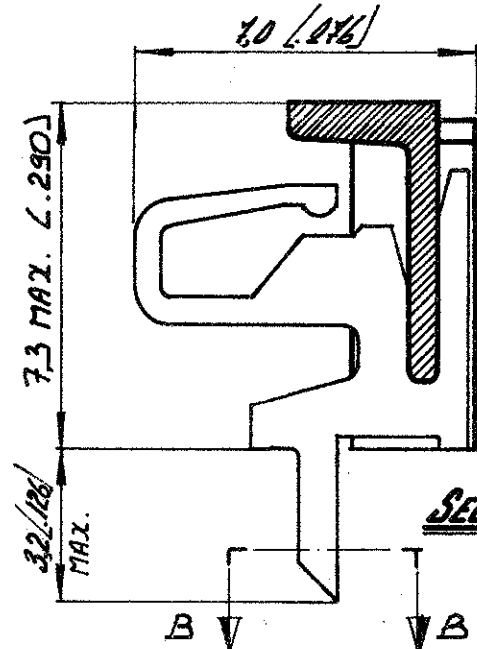
DRAWING MADE IN AMERICAN PROJECTION



	ORDER NUMBER	NUMBER OF POSITIONS	"L" MAX.	
			MM.	INCH.
	5164897-2	2	5,0	.197
1 OBSOLETE	-3	3	7,5	.295
	-4	4	10,0	.394
	-5	5	12,5	.492
1 OBSOLETE	-6	6	15,0	.591
	-7	7	17,5	.689
1 OBSOLETE	-8	8	20,0	.787
	-9	9	22,5	.886
	-10	10	25,0	.984
	-11	11	27,5	1.083
	-12	12	30,0	1.181
	-13	13	32,5	1.280
	-14	14	35,0	1.378
	-15	15	37,5	1.476
	-16	16	40,0	1.575
	-17	17	42,5	1.673
-18	18	45,0	1.772	
-19	19	47,5	1.870	
25164897-0	20	50,0	1.969	

MATERIAL: HOUSING: P.C., 90% GLASS FILLED.
 CONTACT: BRASS
 PLATING: TIN OVER NICKEL BARRIER

1 OBSOLETE PARTS: OBSOLETE CIS STREAMLINING PER D.RENAUD/D.SINISI



A1	ECO-09-026495	28NOV09	KK	AEG
ltr	rev. rec.	date dwn	apvd	

SEE TABLE.	SEE ABOVE.	SEE ABOVE.
ORDER NO.	MATERIAL	PLATING
CUSTOMER COPY FOR REFERENCE ONLY		
DR R. Coolan	DATE 01 MAR 05	©1980 BY AMP-HOLLAND N.V. ALL RIGHTS RESERVED A-MP PRODUCTS COVERED BY PATENTS AND/OR PATENTS PENDING.
CHK	DATE	
DE	DATE	WIRE-RANGE
APP	DATE	INSUL-RANGE
		FIRST USED
	SCALE N.T.S.	SIZE B
		NO C-5164897
		REV A1
NAME 2-20 POS. MALE HEADER ASS'Y. RIGHT ANGLED FOR MINI MATCH INTERCONNECTION SYSTEM, PITCH: 2.5 mm.		

NUMBER C-5164897