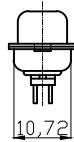
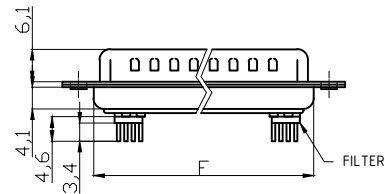
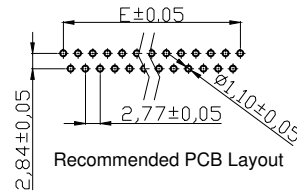
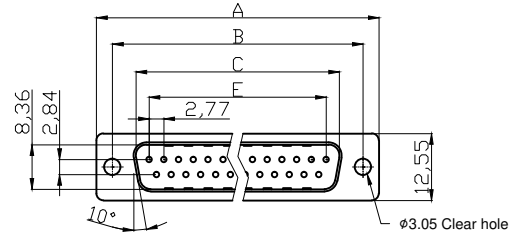


Male



NOTES:

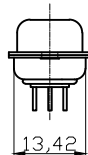
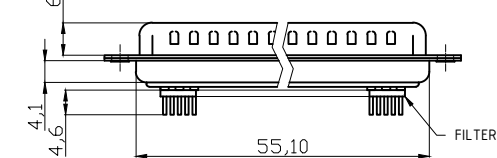
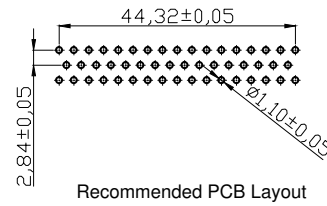
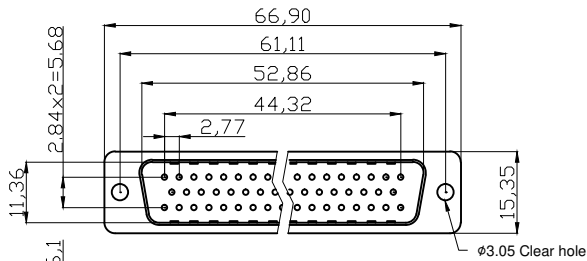
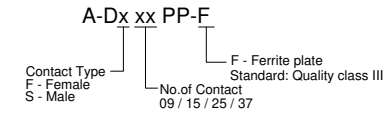
MATERIAL

- 1. Insulator Material: Glass-filled thermoplastic PBT, UL94V-0
- 2. Contact Material: Copper alloy
- 3. Shell : SPCC

ELECTRICAL

- 1. Current Rating : 3AMP
- 2. Voltage Rating : 250V AC/rms 60Hz
- 3. Contact Resistance: 20mΩ Max at 1 AMP DC
- 4. Insulation Resistance: 1000MΩ min at 500 VDC
- 5. Withstand Voltage: 1000V AC/rms 60Hz for 1 minute

- ① Operating Temperature: -55°C~ +105°C
- Order Code:



50 Positions

Dimensions

Positions	A	B	C	E	F
09	30.81	24.99	16.92	11.08	19.20
15	39.20	33.30	25.25	19.39	27.70
25	53.04	47.04	38.96	33.24	41.10
37	69.40	63.50	55.42	49.86	57.30

RoHS compliant
Unit:mm

Scale	Free
TOLERANCE	
X.	±0.38
X.X	±0.25
X.XX	±0.13
DIM	TOL
X.°	±3°
X.X°	±1.0°
Angle	TOL

				Date	Name	Description: D-SUB Connector	
			Drawn	15.08.2012	Lucas		
			Approved	23.12.2020	Luca	ASSMANN WSW-No. A-Dx xx PP-F	
		① Update operating temperature	23.12.2020	Luca		Drawing-No.	
		② Drawn	15.08.2012	Lucas		ASS 4898 CO	rev01
		Id.	Modification	Date		Name	Customer-No.

1

2

3

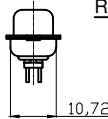
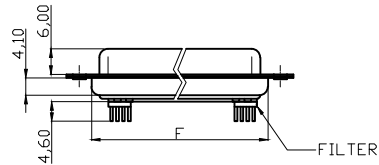
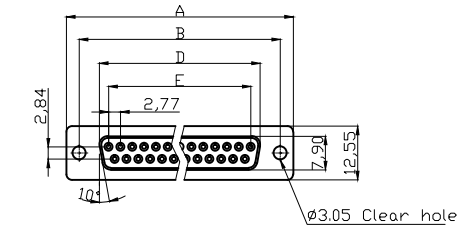
4

5

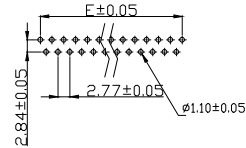
6

7

Female



RECOMMENDED PCB LAYOUT



Product Specification

Material

Insulator : Glass-Filled Thermoplastic PBT,UL94V-0,Black

Contact : Copper alloy, Gold flash selective gold

Shell: SPCC

Clinch Nut : Brass, Nickel Plated

Screwlock : Brass, Nickel Plated

Electrical

Contact Resistance : 20 milliohms Max at 1 AMP DC.

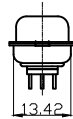
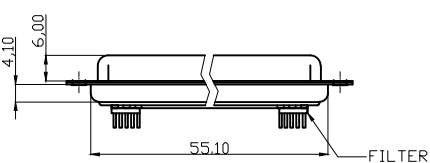
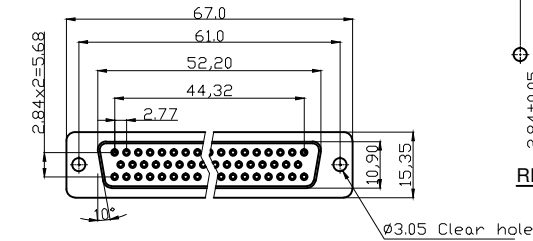
Insulation Resistance : 1000 megohms at 500 VDC

Dielectric Withstanding Voltage : 1000 VAC/rms 60Hz for 1 minute

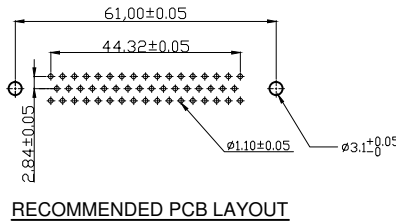
Current Rating : 3 AMP

Volatge Rating : 250 VAC/rms 60Hz

① OPERATING TEMPERATURE:-55°C+105°C



50 POSITIONS



RECOMMENDED PCB LAYOUT

DIMENSION TABLE

POSITIONS	A±0.15	B±0.10	D±0.13	E±0.08	F±0.10
9	30.81	24.99	16.33	11.08	19.20
15	39.14	33.32	24.66	19.39	27.70
25	53.04	47.04	38.38	33.24	41.10
37	69.32	63.50	54.84	49.86	57.30

G

RoHS compliant

Unit: mm



File No.: E198287

Scale Free

TOLERANCE

X. ±0.38

X.X ±0.25

X.XX ±0.13

DIM TOL

X.° ±3°

X.X° ±1.0°

Angle TOL

Id.

Modification

Date

Name

Update operating temperature

Drawn

Id.

23.12.2020

15.08.2012

23.12.2020

15.08.2012

23.12.2020

15.08.2012

23.12.2020

15.08.2012

23.12.2020

23.12.2020

15.08.2012

23.12.2020

15.08.2012

23.12.2020

15.08.2012

23.12.2020

15.08.2012

23.12.2020

Luca

Luca

Luca

Luca

Luca

Luca

Luca

Luca

Luca



Date

15.08.2012

23.12.2020

23.12.2020

23.12.2020

23.12.2020

23.12.2020

23.12.2020

23.12.2020

Name

Lucas

Luca

Luca

Luca

Luca

Luca

Luca

Luca

Description: D-SUB Connector

ASSMANN WSW-No.

A-Dx xx PP/F

Drawing-No.

ASS 4898 CO

rev01

Customer-No.

Sheet 2/2

Sheet 2/2

A

B

C

D

E

F

G

H

1

2

3

4

5

6

7