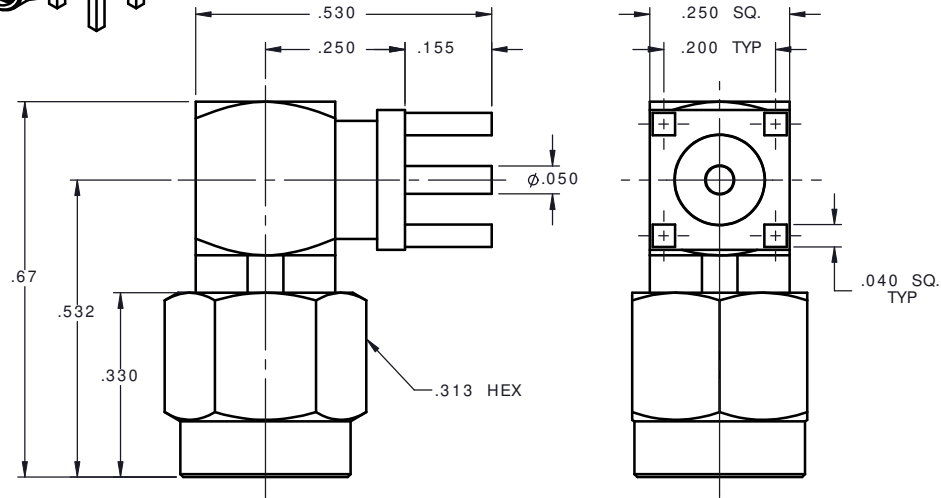


REVISIONS			
REV.	DESCRIPTION	DATE	APPROVED
A	INITIAL RELEASE	01/18/11	D.N.




NOTES:

MATERIALS:

1. BODIES & COUPLING NUT= STAINLESS STEEL PER ASTM A582, ALLOY 303, CONDITION "A".
2. INSULATORS = VIRGIN WHITE TEFLON PER ASTM D1710, GRADE 1, TYPE I, CLASS "B".
3. INTERFACE CONTACT & RETAINING RING = BERYLLIUM COPPER PER ASTM B196, ALLOY C17300, TEMPER TD04.
4. P.C.B. CONTACT & CAP = BRASS PER ASTM B16, ALLOY C36000, TEMPER H02.
5. GASKET = SILICONE RUBBER PER ZZ- R- 765, CLASS 2B, GRADE 65- 75.

FINISHES:

1. BODIES = GOLD PLATE PER MIL- G- 45204, TYPE II, CLASS 0, GRADE C, OVER .000050 TO .00010 STRESS FREE NICKEL PER QQ- N- 290.
2. CONTACTS = GOLD PLATE PER MIL- G- 45204, TYPE II, CLASS 1, GRADE C, OVER .00010 TO .00020 STRESS FREE SULFAMATE NICKEL PER QQ- N- 290.
3. COUPLING NUT = PASSIVATE PER QQ- P- 35, TYPE VI.
4. CAP = GOLD PLATE PER MIL- G- 45204, TYPE II, CLASS 0, GRADE C, OVER .00010 TO .00020 COPPER STRIKE PER MIL- C- 14550.

UNLESS OTHERWISE SPECIFIED DIMENSIONS ARE IN INCHES TOLERANCES ON		DWN: DATE D.N. 01/18/11	 Property of Radiall This document cannot be reproduced or communicated to a third party without prior written permission of RADIALL.	<b>SMA RIGHT ANGLE PLUG P.C.B. MOUNT RECEPTACLE</b>		
DECIMAL	ANGLE	CHKD: DATE A.D.M. 01/18/11				
		APVD: DATE J.M. 01/18/11				
REFERENCE:		MATERIALS & FINISHES: SEE NOTES	SIZE <b>A</b>	FSCM NO. 19505	DWG NO. <b>9646-1513-000</b>	REV A
ORIGINATED: D.N. DATE: 01/18/11			SCALE 4:1	THIRD ANGLE PROJECTION	SHEET 1 OF 1	

9646-1513-000