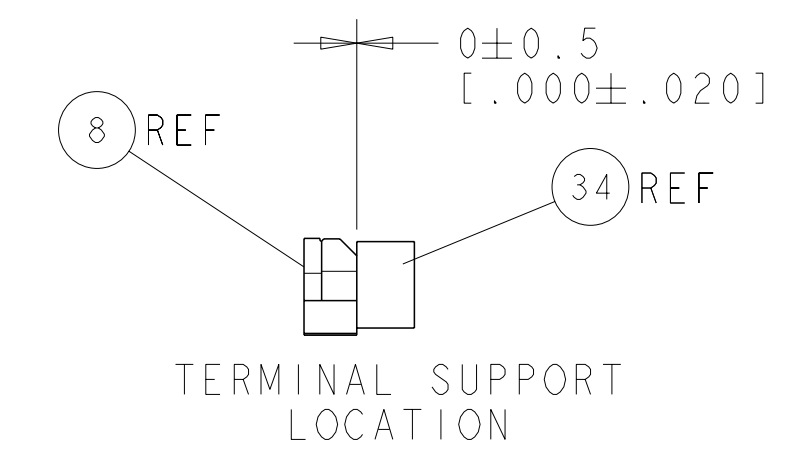
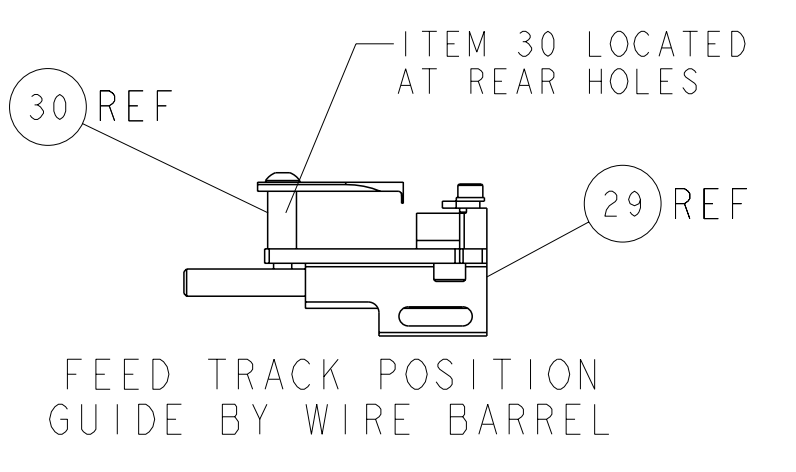
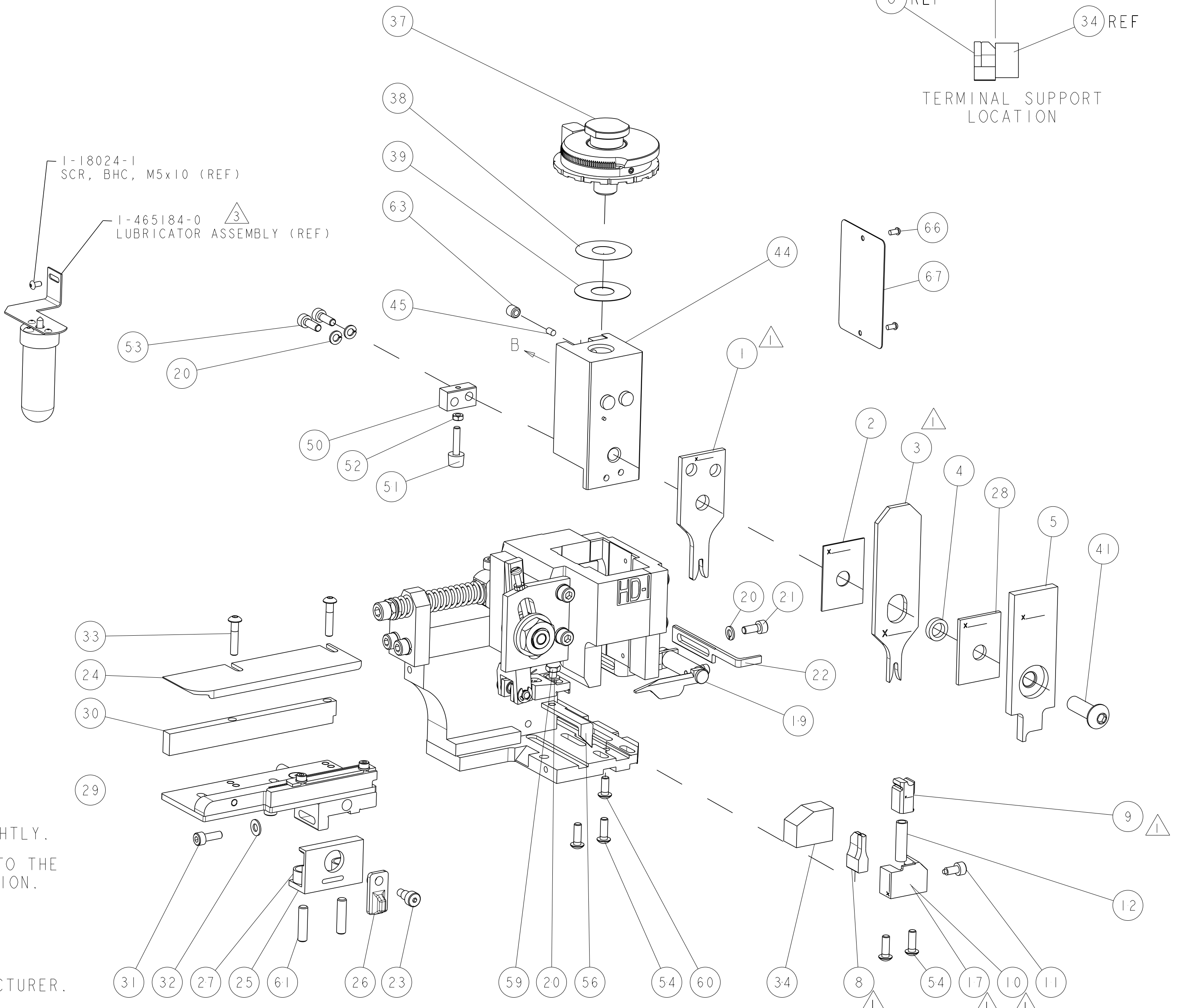
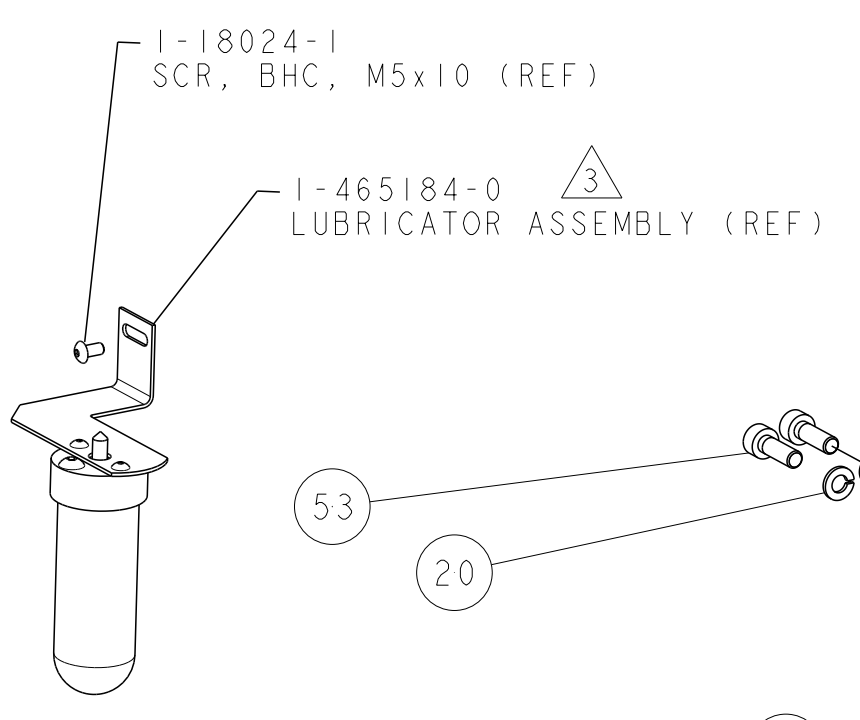


PART NUMBER	REV	TERMINATOR	FEED TYPE	DESCRIPTION
1528718-1	B	LEADMAKER	MECH POST FEED	CUTS CARRIER
1528718-2	B	BENCH	MECH PRE FEED	CUTS CARRIER
1528718-6	B	LEADMAKER	MECH POST FEED	CONTINUOUS CARRIER
7-1528718-1	B	LEADMAKER	MECH POST FEED	-1 AND SPARE PARTS
7-1528718-2	B	BENCH	MECH PRE FEED	-2 AND SPARE PARTS
7-1528718-6	B	LEADMAKER	MECH POST FEED	-6 AND SPARE PARTS
7-1528718-7	A	-	-	SPARE PARTS KIT

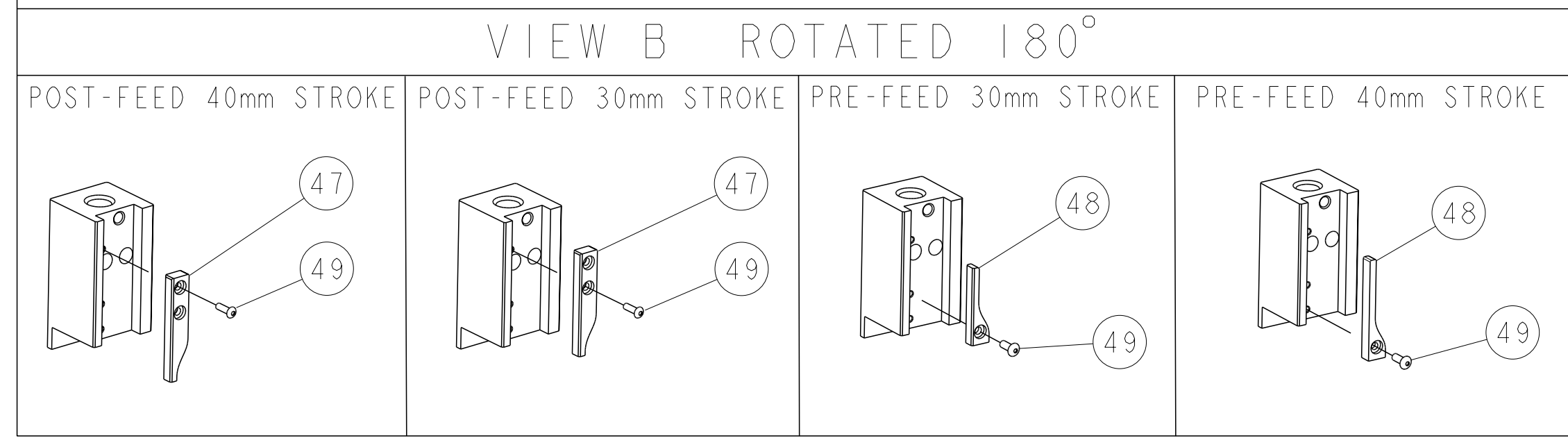
CRIMP DATA	MOLEX TERMINAL	MOLEX CRIMP SPECS
TERMINAL NAME: FEMALE TERMINAL CP 1.5		
CRIMP	SIZE	TYPE
WIRE	2.21 (.087 IN)	F
INSUL	2.79 (.110 IN)	O
RANGE >1.00-2.00mm <sup>2</sup>		
APPL INSTRUCTIONS 408-8322 & 408-8490		
WIRE STRIP LENGTH 4.50 (.177 IN)		
TERMINAL APPL SPEC	MOLEX DRG. RSD-98915-001 SHT 3	FEED 9.20 (.362 IN)
TERMINALS APPLIED		
TE TERM PN	MANUF TERM PN	
1949147-1	0989151039	
1949147-2	0989151219	
1949147-3	64323-1039	
1949147-4	64323-1219	
WIRE SIZE	CRIMP HEIGHT	REF SETTING
2.00mm <sup>2</sup>	1.75 ± 0.05 (.069 ± .002 IN)	B 5
1.50mm <sup>2</sup>	1.55 ± 0.05 (.061 ± .002 IN)	D 1
1.40mm <sup>2</sup>	1.50 ± 0.05 (.059 ± .002 IN)	D 3

- △ RECOMMENDED SPARE PARTS.
- 2. GREASE RAM, CAM, CAM FOLLOWER AND FEED ROD LIGHTLY.
- △ CERTAIN TERMINALS REQUIRE LUBRICATION. REFER TO THE APPLICATOR INSTRUCTION SHEET FOR MORE INFORMATION.
- 4. LUBRICATE DAILY PER THE APPLICATOR INSTRUCTION SHEET SUPPLIED WITH THE APPLICATOR.
- △ ALL CRIMP DATA SUPPLIED BY THE TERMINAL MANUFACTURER.
- △ ONLY REFERENCE FOR CRIMP HEIGHTS, DEFORMATION OF THE CRIMPING CONTACT, WIRE POSITION IN CRIMPING AREA & WIRE PREPARATION.



LOC	DIST	REV	DATE	BY	CHK	APPV
A	66		03OCT2006	LJL	MC	
B			05MAY2010	MY	TE	

REV	DATE	DESCRIPTION	ITEM NO
-	-	-	73
-	-	-	72
-	-	-	71
-	-	-	70
-	-	-	69
-	-	-	68
-	-	-	67
-	-	-	66
-	-	-	65
-	-	-	64
-	-	-	63
-	-	-	62
-	-	-	61
-	-	-	60
-	-	-	59
-	-	-	58
-	-	-	57
-	-	-	56
-	-	-	55
-	-	-	54
-	-	-	53
-	-	-	52
-	-	-	51
-	-	-	50
-	-	-	49
-	-	-	48
-	-	-	47
-	-	-	46
-	-	-	45
-	-	-	44
-	-	-	43
-	-	-	42
-	-	-	41
-	-	-	40
-	-	-	39
-	-	-	38
-	-	-	37
-	-	-	36
-	-	-	35
-	-	-	34
-	-	-	33
-	-	-	32
-	-	-	31
-	-	-	30
-	-	-	29
-	-	-	28
-	-	-	27
-	-	-	26
-	-	-	25
-	-	-	24
-	-	-	23
-	-	-	22
-	-	-	21
-	-	-	20
-	-	-	19
-	-	-	18
-	-	-	17
-	-	-	16
-	-	-	15
-	-	-	14
-	-	-	13
-	-	-	12
-	-	-	11
-	-	-	10
-	-	-	9
-	-	-	8
-	-	-	7
-	-	-	6
-	-	-	5
-	-	-	4
-	-	-	3
-	-	-	2
-	-	-	1
-	-	-	77
-	-	-	76
-	-	-	72
-	-	-	71
-	-	-	6
-	-	-	2
-	-	-	1



REV	DATE	DESCRIPTION	ITEM NO
-	-	-	84
-	-	-	83
-	-	-	82
-	-	-	81
-	-	-	80
-	-	-	79
-	-	-	78
-	-	-	77
-	-	-	76
-	-	-	75
-	-	-	74
-	-	-	73
-	-	-	72
-	-	-	71
-	-	-	6
-	-	-	2
-	-	-	1

DIMENSIONS: mm [IN]	TOLERANCES UNLESS OTHERWISE SPECIFIED: 9 PLC ± 1 PLC ± 3 PLC ± 4 PLC ± ANGLES ± FINISH	DWG NO: 05SEP2006 CHK: L LOUHOUSE APVD: M CLIFFORD PRODUCT SPEC: See Table APPLICATION SPEC: See Table WEIGHT: A	Tyco Electronics Harrisburg, PA 17105-3608 FINE ADJUST SIDE FEED HDI APPLICATOR SIZE: 00779 CAGE CODE: 1528718 SCALE: 3:5 SHEET: 1 OF 1 REV: B
------------------------	--	---	---