

THIS DRAWING IS UNPUBLISHED. RELEASED FOR PUBLICATION  
© COPYRIGHT - By - ALL RIGHTS RESERVED.

LOC	DIST	REVISIONS					
GP	00	P	LTR	DESCRIPTION	DATE	DWN	APVD
			F	REVISED PER ECO-11-012755	27JUL2011	CJV	SLB

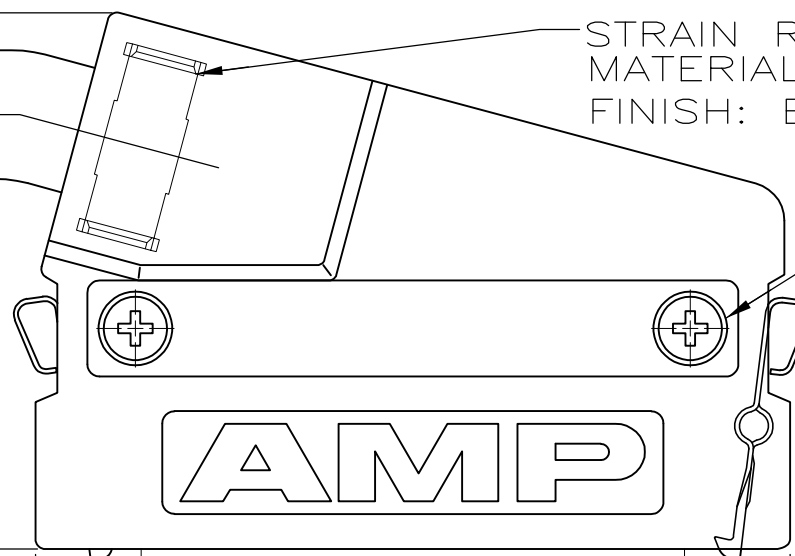
CABLE SUPPLIED BY CUSTOMER SEE TABLE

STRAIN RELIEF STAPLE (1 SUPPLIED)  
MATERIAL: STEEL  
FINISH: BRIGHT TIN/LEAD OVER NICKEL

MACHINE SCREW (2 SUPPLIED)  
#2-56 UNC X 6.35 [.250]

SPRING LATCH (2 SUPPLIED)  
MATERIAL: STAINLESS STEEL

35.43  
[1.395]

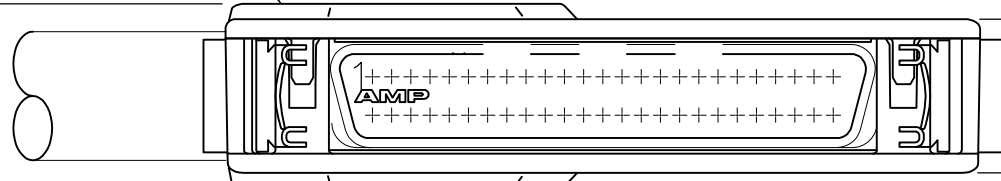


CONNECTOR (MUST BE PURCHASED SEPARATELY)

UPPER BACKSHELL (1 SUPPLIED)  
MATERIAL: ZINC  
FINISH: NICKEL OVER COPPER

49.91  
[1.965]

12.19  
[.480]



10.16  
[.400]

LOWER BACKSHELL (1 SUPPLIED)  
MATERIAL: ZINC  
FINISH: NICKEL OVER COPPER

△3	△5	△6	749202-4
△4	△2	△6	749202-3
△3	△2		749202-2
△3	△1	△6	749202-1
PACKAGING	CABLE DIA	PART NUMBER	

- △1 9.02[.355] MAX CABLE DIAMETER.
- △2 10.16[.400] MAX CABLE DIAMETER.
- △3 PACKAGED ONE KIT PER BAG.
- △4 BULK PACKAGED.
- △5 12.19[.480] MAX CABLE DIAMETER.
- △6 OBSOLETE PART NUMBER.

THIS DRAWING IS A CONTROLLED DOCUMENT.

DIMENSIONS: INCHES	TOLERANCES UNLESS OTHERWISE SPECIFIED:	DWN M.E.SHIRK 12/20/88	TE Connectivity
	0 PLC ± -	CHK M.A.MCCAFFREY 12/20/88	
	1 PLC ± -	APVD J.L. BROSHARD 12/20/88	
MATERIAL	FINISH	NAME	
SEE CALLOUTS	SEE CALLOUTS	PRODUCT SPEC	RESTRICTED TO
		APPLICATION SPEC	SIZE CAGE CODE DRAWING NO
		WEIGHT	A3 00779 C-749202
		CUSTOMER DRAWING	SCALE 2:1 SHEET 1 OF 1 REV F