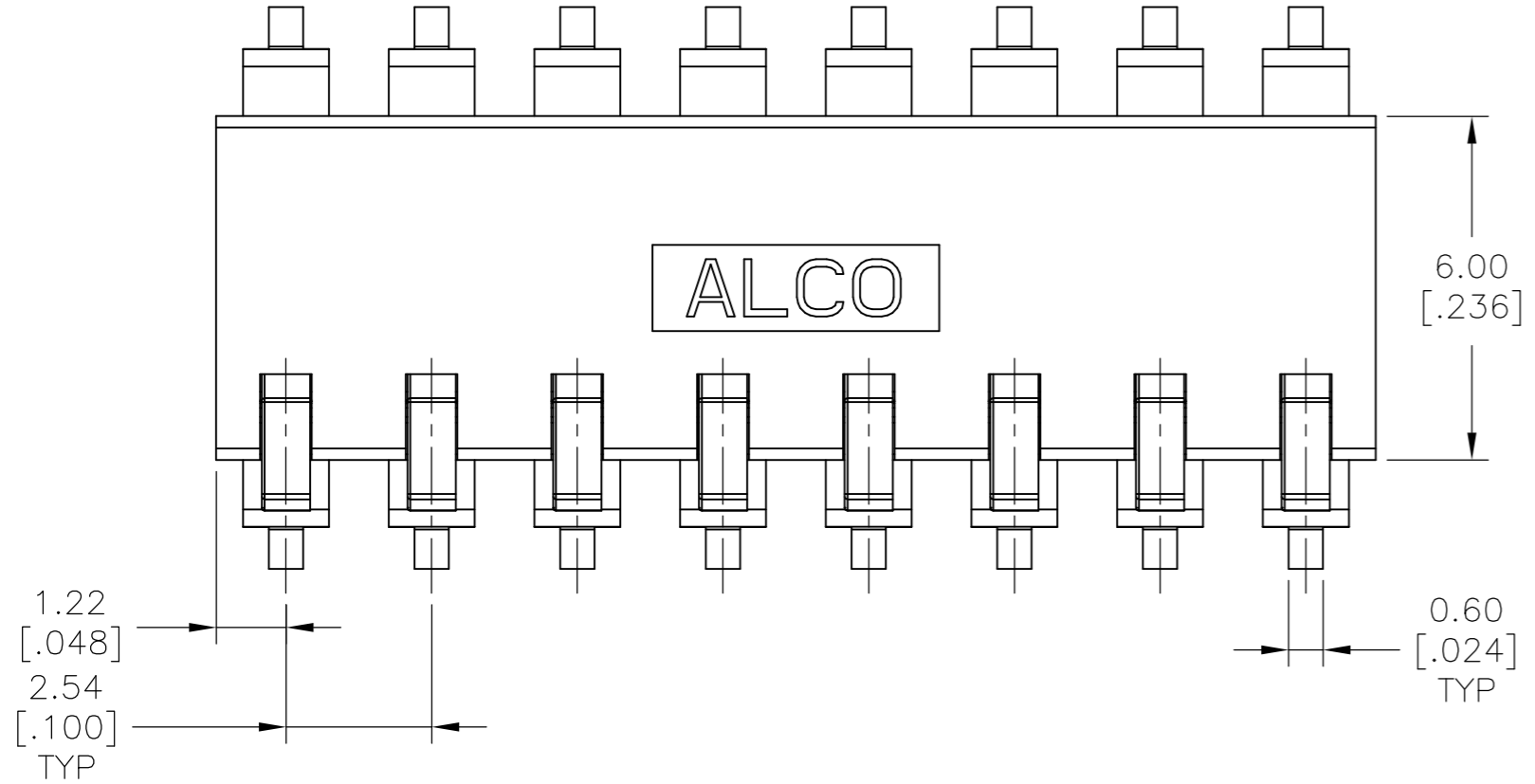
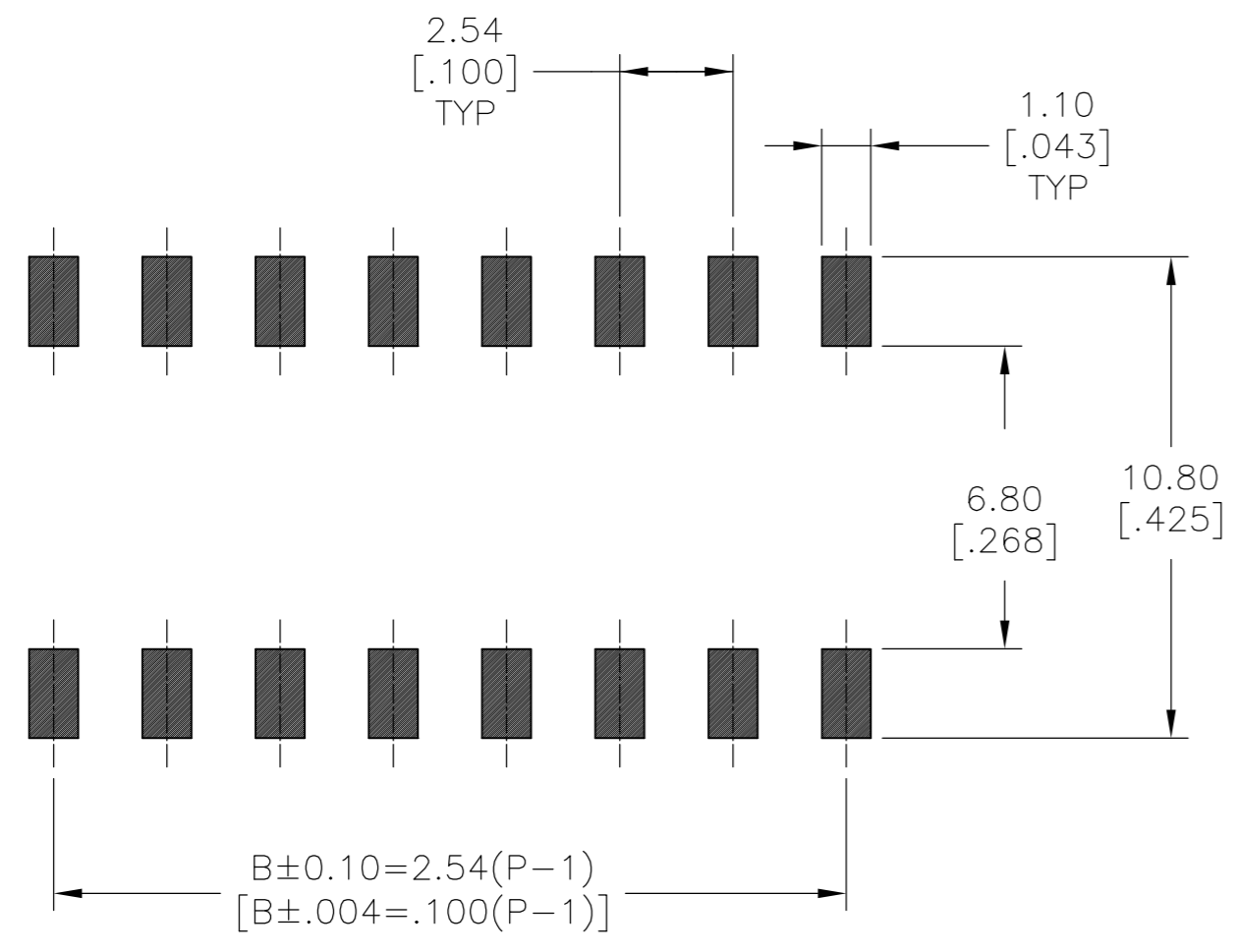
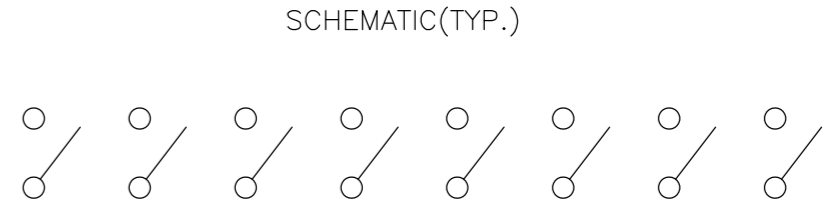
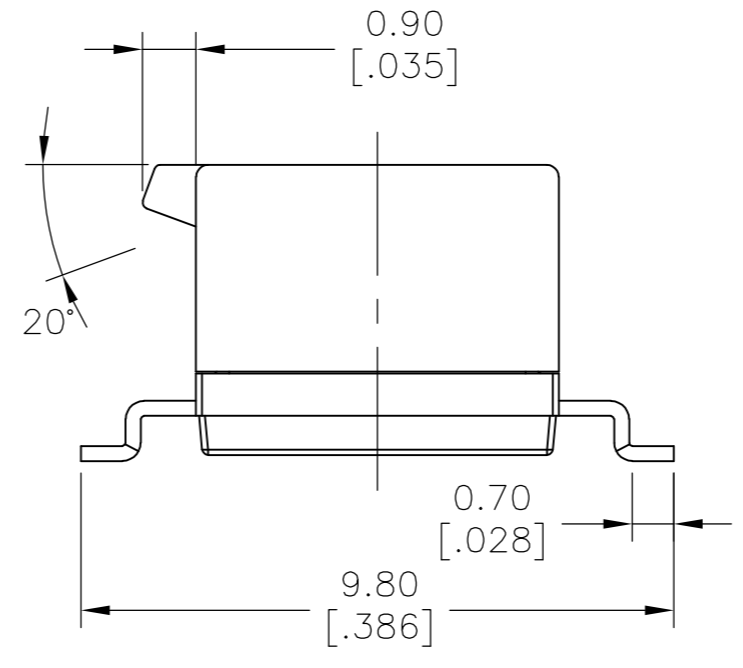
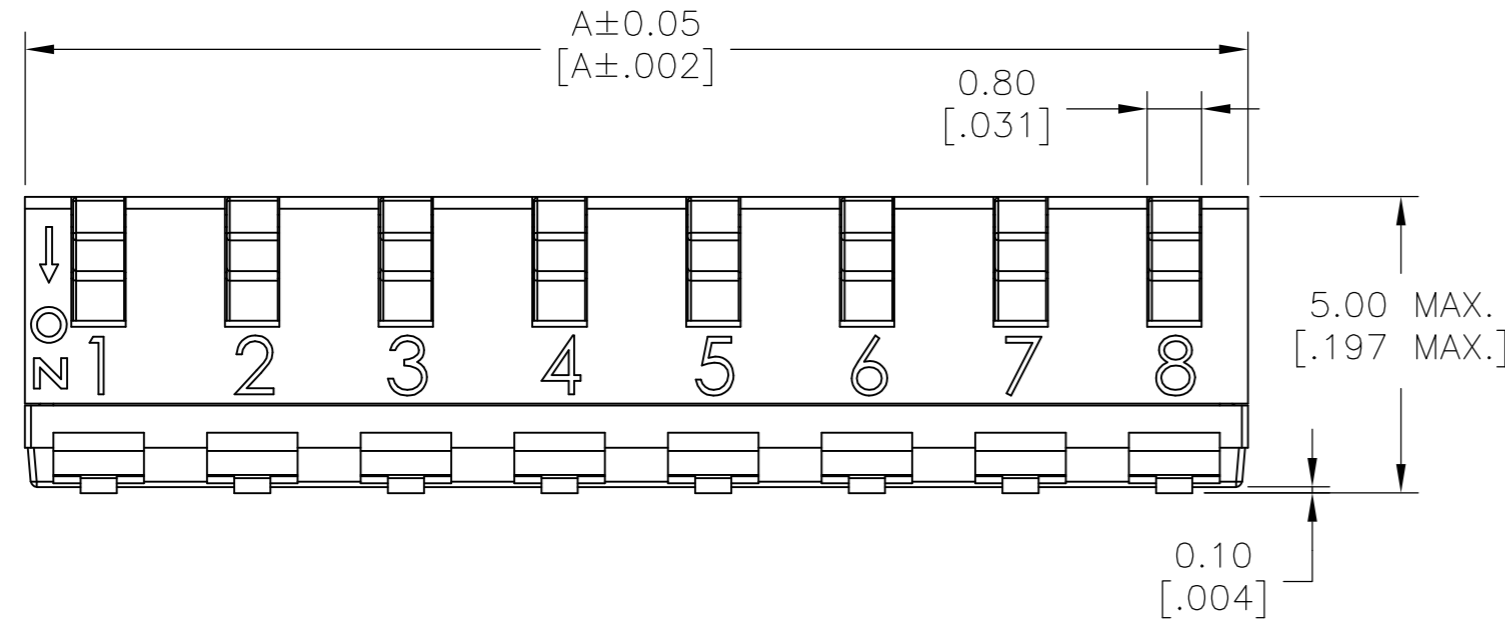
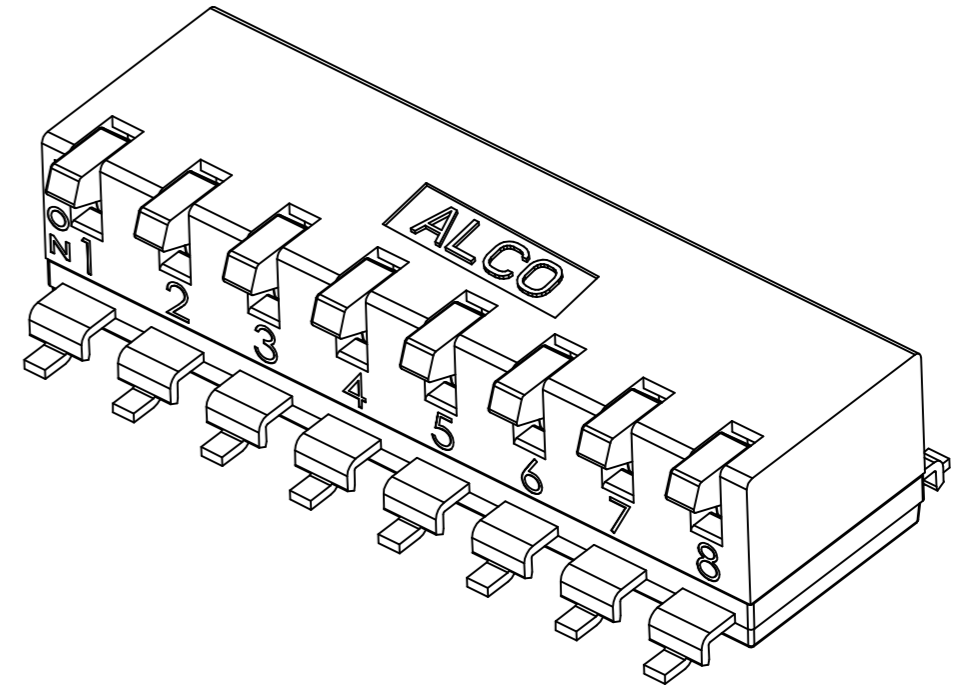


THIS DRAWING IS UNPUBLISHED. RELEASED FOR PUBLICATION  
 © COPYRIGHT - TE Connectivity ALL RIGHTS RESERVED.

REVISIONS					
P	LTR	DESCRIPTION	DATE	DWN	APVD
A		INITIAL RELEASE	29MAY2017	SK	AS



LONG ACTUATOR  
 PUSH DOWN ON



P.C.B. LAYOUT

- EDSP
- SG
- 04
- ROHS COMPLIANT
- PACKAGING:  
TU=TUBE  
TR=TAPE AND REEL
- SEAL:  
N=NONE  
S=TOP SEAL
- ACTUATOR:  
L=LONG  
R=SHORT
- ACTUATION:  
N=PUSH DOWN ON  
F=PUSH UP ON

POSITIONS:  
02,04,06,08,10

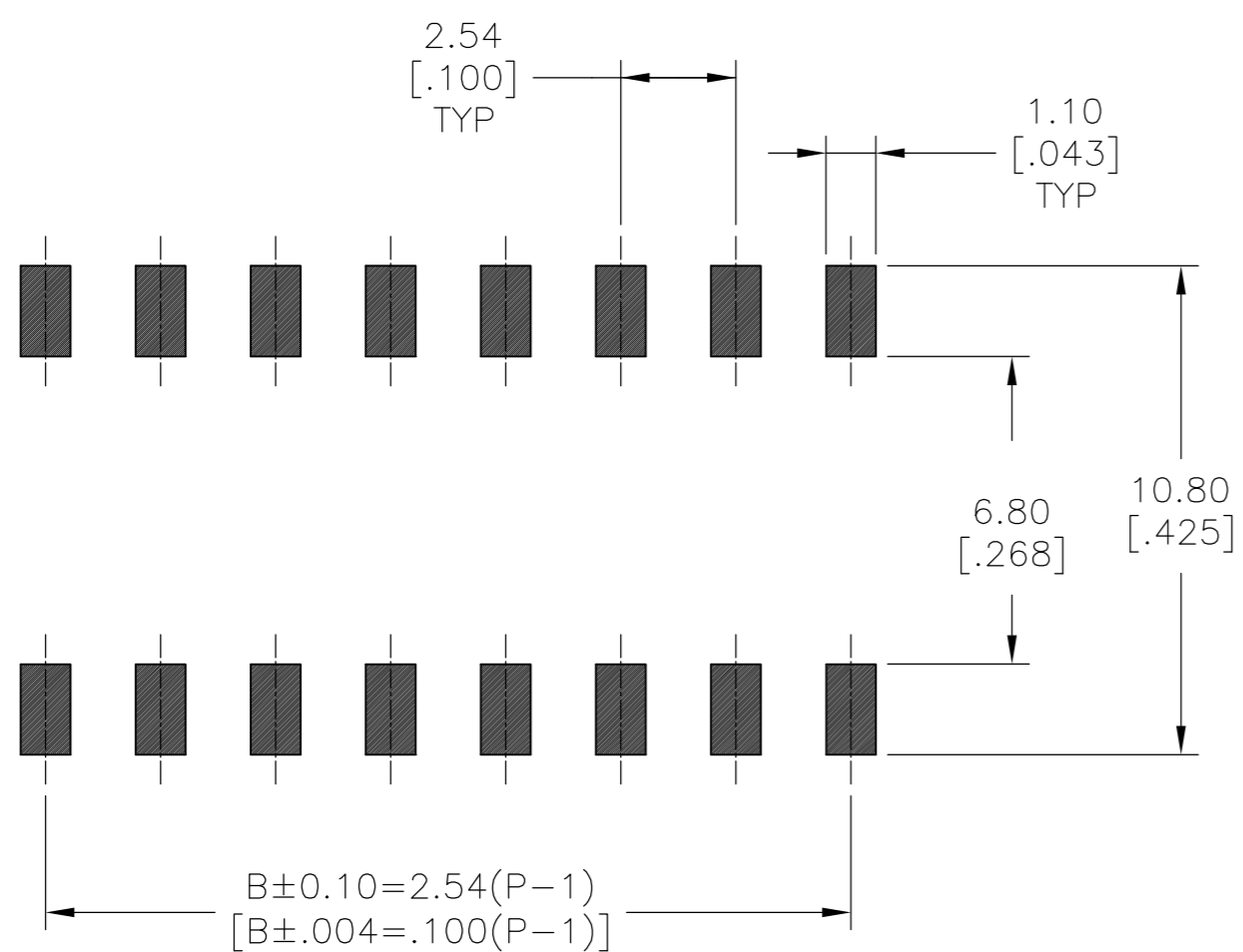
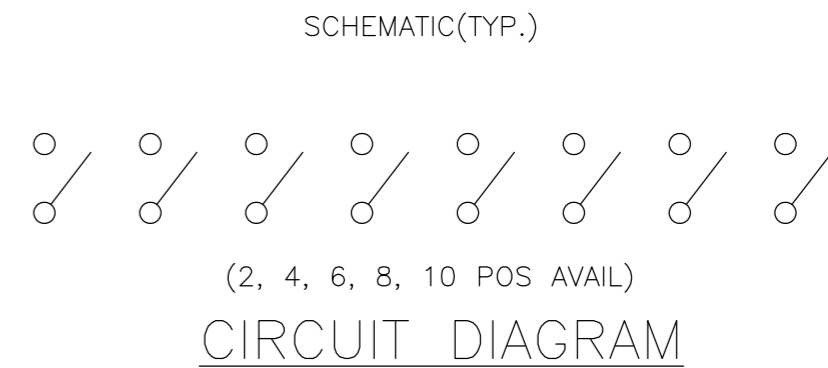
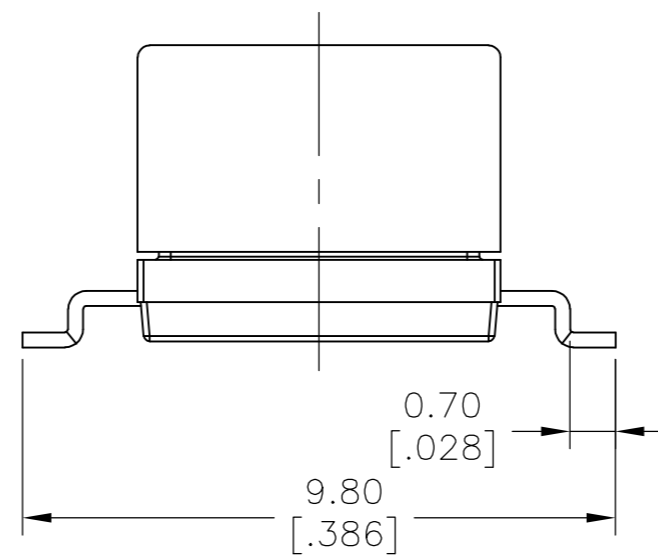
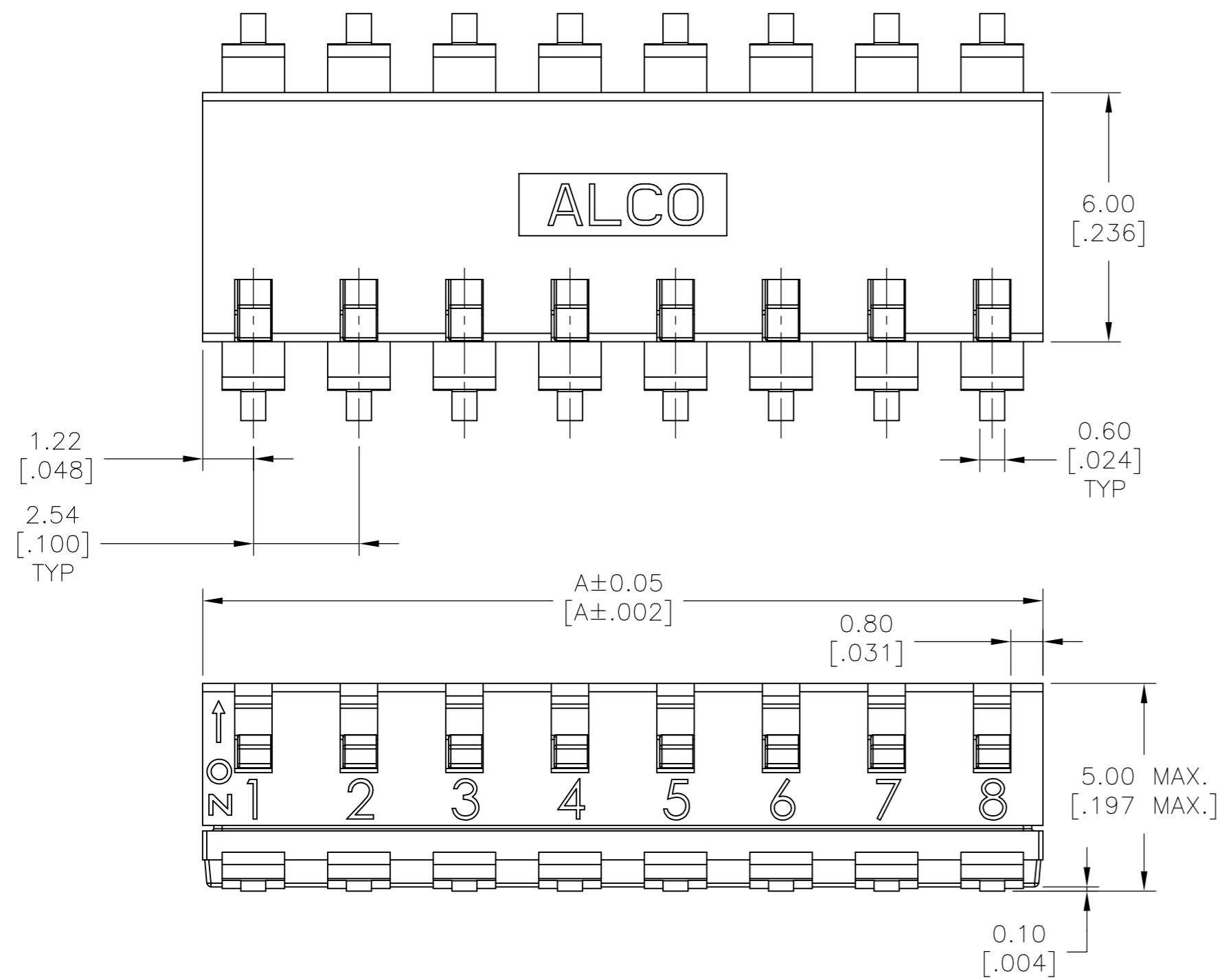
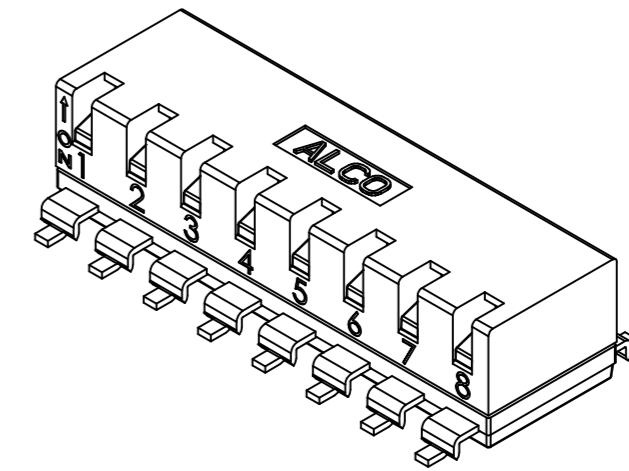
SMT:GULL WING

THIS DRAWING IS A CONTROLLED DOCUMENT.		DWN SHIVAKUMAR S S	12MAY2017		TE Connectivity	
DIMENSIONS: mm[INCHES]		CHK ALEXANDER SHARPE	12MAY2017		NAME PIANO DIP SWITCH END STACKABLE	
TOLERANCES UNLESS OTHERWISE SPECIFIED:		APVD ALEXANDER SHARPE	12MAY2017	PRODUCT SPEC		
0 PLC ± -		APPLICATION SPEC		SIZE		
1 PLC ± -		-		CAGE CODE		
2 PLC ± 0.20[.008]		-		DRAWING NO		
3 PLC ± -		-		RESTRICTED TO		
4 PLC ± -		-		SCALE		
ANGLES ± -		-		SHEET		
FINISH		-		REV		
MATERIAL		-		CUSTOMER DRAWING		
		WEIGHT		A2 00779 C=2319764		
		SCALE		1:1		
		SHEET		1 of 4		
		REV		A		

THIS DRAWING IS UNPUBLISHED. RELEASED FOR PUBLICATION  
 © COPYRIGHT - TE Connectivity ALL RIGHTS RESERVED.

REVISIONS					
P	LTR	DESCRIPTION	DATE	DWN	APVD
-	-	SEE SHEET 1	-	-	-

SHORT ACTUATOR  
PUSH UP ON



P.C.B. LAYOUT

THIS DRAWING IS A CONTROLLED DOCUMENT.		DWN 12MAY2017 SHIVAKUMAR S S		
DIMENSIONS: mm[INCHES]		CHK 12MAY2017 ALEXANDER SHARPE		
TOLERANCES UNLESS OTHERWISE SPECIFIED:		APVD 12MAY2017 ALEXANDER SHARPE	NAME PIANO DIP SWITCH END STACKABLE	
0 PLC ± -		PRODUCT SPEC	-	
1 PLC ± -		APPLICATION SPEC	-	
2 PLC ± 0.20[.008]		WEIGHT	-	
3 PLC ± -		MATERIAL	-	
4 PLC ± -		FINISH	-	
ANGLES ± -		SCALE	1:1	
MATERIAL		SIZE	A2	
FINISH		CAGE CODE	00779	
WEIGHT		DRAWING NO	C=2319764	
CUSTOMER DRAWING		RESTRICTED TO	-	
SCALE		SHEET	2 of 4	
REV		A		

THIS DRAWING IS UNPUBLISHED. RELEASED FOR PUBLICATION  
 © COPYRIGHT - TE Connectivity ALL RIGHTS RESERVED.

REVISIONS				
P	LTR	DESCRIPTION	DATE	DWN
-	-	SEE SHEET 1	-	-

YES	DOWN ON	UP ON	3	B	C	D
7.62 [.300]	10.06 [.396]	04	EDSP04SGRNSTR04	5-2319764-2		
2.54 [.100]	4.98 [.196]	02	EDSP02SGRNSTR04	5-2319764-1		
22.86 [.900]	25.30 [.996]	10	EDSP10SGRFNTR04	5-2319764-0		
17.78 [.700]	20.22 [.796]	08	EDSP08SGRFNTR04	4-2319764-9		
12.70 [.500]	15.14 [.596]	06	EDSP06SGRFNTR04	4-2319764-8		
7.62 [.300]	10.06 [.396]	04	EDSP04SGRFNTR04	4-2319764-7		
2.54 [.100]	4.98 [.196]	02	EDSP02SGRFNTR04	4-2319764-6		
22.86 [.900]	25.30 [.996]	10	EDSP10SGLFNTR04	4-2319764-5		
17.78 [.700]	20.22 [.796]	08	EDSP08SGLFNTR04	4-2319764-4		
12.70 [.500]	15.14 [.596]	06	EDSP06SGLFNTR04	4-2319764-3		
7.62 [.300]	10.06 [.396]	04	EDSP04SGLFNTR04	4-2319764-2		
2.54 [.100]	4.98 [.196]	02	EDSP02SGLFNTR04	4-2319764-1		
22.86 [.900]	25.30 [.996]	10	EDSP10SGRNNTRO4	4-2319764-0		
17.78 [.700]	20.22 [.796]	08	EDSP08SGRNNTRO4	3-2319764-9		
12.70 [.500]	15.14 [.596]	06	EDSP06SGRNNTRO4	3-2319764-8		
7.62 [.300]	10.06 [.396]	04	EDSP04SGRNNTRO4	3-2319764-7		
2.54 [.100]	4.98 [.196]	02	EDSP02SGRNNTRO4	3-2319764-6		
22.86 [.900]	25.30 [.996]	10	EDSP10SGLNNTRO4	3-2319764-5		
17.78 [.700]	20.22 [.796]	08	EDSP08SGLNNTRO4	3-2319764-4		
12.70 [.500]	15.14 [.596]	06	EDSP06SGLNNTRO4	3-2319764-3		
7.62 [.300]	10.06 [.396]	04	EDSP04SGLNNTRO4	3-2319764-2		
2.54 [.100]	4.98 [.196]	02	EDSP02SGLNNTRO4	3-2319764-1		
22.86 [.900]	25.30 [.996]	10	EDSP10SGRFSTU04	3-2319764-0		
17.78 [.700]	20.22 [.796]	08	EDSP08SGRFSTU04	2-2319764-9		
12.70 [.500]	15.14 [.596]	06	EDSP06SGRFSTU04	2-2319764-8		
7.62 [.300]	10.06 [.396]	04	EDSP04SGRFSTU04	2-2319764-7		

YES	DOWN ON	UP ON	2	B	C	D
2.54 [.100]	4.98 [.196]	02	EDSP02SGRFSTU04	2-2319764-6		
22.86 [.900]	25.30 [.996]	10	EDSP10SGRNSTU04	2-2319764-5		
17.78 [.700]	20.22 [.796]	08	EDSP08SGRNSTU04	2-2319764-4		
12.70 [.500]	15.14 [.596]	06	EDSP06SGRNSTU04	2-2319764-3		
7.62 [.300]	10.06 [.396]	04	EDSP04SGRNSTU04	2-2319764-2		
2.54 [.100]	4.98 [.196]	02	EDSP02SGRNSTU04	2-2319764-1		
22.86 [.900]	25.30 [.996]	10	EDSP10SGRFNTU04	2-2319764-0		
17.78 [.700]	20.22 [.796]	08	EDSP08SGRFNTU04	1-2319764-9		
12.70 [.500]	15.14 [.596]	06	EDSP06SGRFNTU04	1-2319764-8		
7.62 [.300]	10.06 [.396]	04	EDSP04SGRFNTU04	1-2319764-7		
2.54 [.100]	4.98 [.196]	02	EDSP02SGRFNTU04	1-2319764-6		
22.86 [.900]	25.30 [.996]	10	EDSP10SGLFNNTU04	1-2319764-5		
17.78 [.700]	20.22 [.796]	08	EDSP08SGLFNNTU04	1-2319764-4		
12.70 [.500]	15.14 [.596]	06	EDSP06SGLFNNTU04	1-2319764-3		
7.62 [.300]	10.06 [.396]	04	EDSP04SGLFNNTU04	1-2319764-2		
2.54 [.100]	4.98 [.196]	02	EDSP02SGLFNNTU04	1-2319764-1		
22.86 [.900]	25.30 [.996]	10	EDSP10SGRNNTU04	1-2319764-0		
17.78 [.700]	20.22 [.796]	08	EDSP08SGRNNTU04	2319764-9		
12.70 [.500]	15.14 [.596]	06	EDSP06SGRNNTU04	2319764-8		
7.62 [.300]	10.06 [.396]	04	EDSP04SGRNNTU04	2319764-7		
2.54 [.100]	4.98 [.196]	02	EDSP02SGRNNTU04	2319764-6		
22.86 [.900]	25.30 [.996]	10	EDSP10SGLNNTU04	2319764-5		
17.78 [.700]	20.22 [.796]	08	EDSP08SGLNNTU04	2319764-4		
12.70 [.500]	15.14 [.596]	06	EDSP06SGLNNTU04	2319764-3		
7.62 [.300]	10.06 [.396]	04	EDSP04SGLNNTU04	2319764-2		
2.54 [.100]	4.98 [.196]	02	EDSP02SGLNNTU04	2319764-1		

TAPE	ACTUATOR TYPE	ACTUATION PUSH	NOTE	B	A	No OF POSITION	TE DESCRIPTIVE PART NUMBER	TE PART NUMBER
			2					

THIS DRAWING IS A CONTROLLED DOCUMENT.		DWN 12MAY2017 SHIVAKUMAR S S	<b>TE</b> TE Connectivity	
DIMENSIONS: mm[INCHES]		CHK 12MAY2017 ALEXANDER SHARPE		
TOLERANCES UNLESS OTHERWISE SPECIFIED:		APVD 12MAY2017 ALEXANDER SHARPE	NAME	
0 PLC ± -		PRODUCT SPEC	PIANO DIP SWITCH END STACKABLE	
1 PLC ± -		APPLICATION SPEC	-	
2 PLC ± 0.20[.008]			SIZE	CAGE CODE
3 PLC ± -			A2	00779
4 PLC ± -			DRAWING NO	RESTRICTED TO
ANGLES ± -			C=2319764	-
FINISH		WEIGHT	SCALE	SHEET
-			1:1	3 of 4
		CUSTOMER DRAWING	REV	A

THIS DRAWING IS UNPUBLISHED. RELEASED FOR PUBLICATION  
 © COPYRIGHT - TE Connectivity ALL RIGHTS RESERVED.

REVISIONS					
P	LTR	DESCRIPTION	DATE	DWN	APVD
-	-	SEE SHEET 1	-	-	-

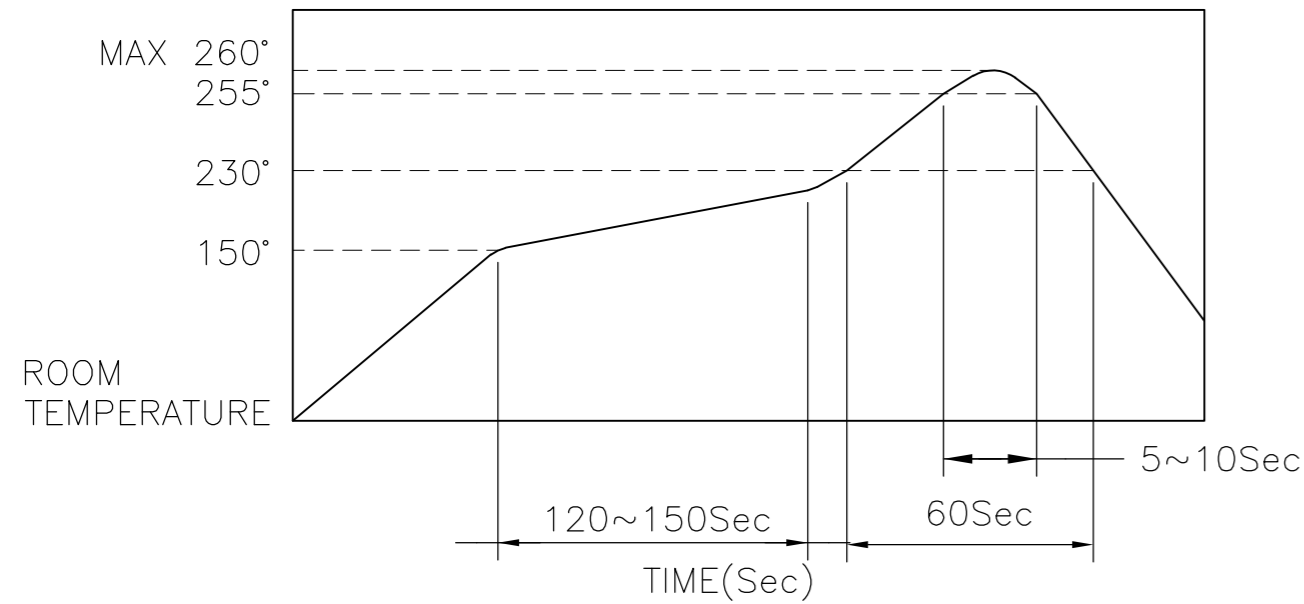
**SOLDERING CONDITIONS:**

THE CONDITIONS MENTIONED BELOW IS THE TEMPERATURE ON THE CU FOIL OF THE P.C.B SURFACE. DO NOT ALLOW THE SWITCH'S SURFACE TEMPERATURE TO EXCEED 260°C.

**MANUAL SOLDERING**

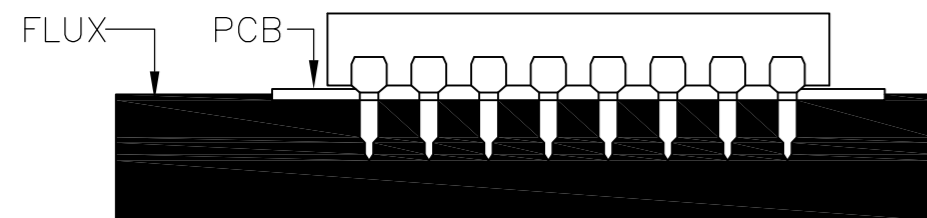
SOLDERING TEMPERATURE	MAX. 350°C.
CONTINUOUS SOLDERING TIME	MAX. 5 SECONDS.

**REFLOW SOLDERING**



**HANDLING PRECAUTIONS**

- CARE SHOULD BE EXERCISED SO THAT FLUX FROM THE UPPER PART OF THE PRINTED CIRCUIT BOARD DOES NOT ADHERE TO THE SWITCH.
- DON'T CLEAN THE SWITCH BODY EXCEPT WITH TOP TAPE SEALED TYPE, WHICH CAN ONLY SPRAY OF CLEANING METHOD FROM TOP OF S/W.
- ENSURE FLUX DOES NOT RISE ABOVE THE TOP SURFACE OF THE PCB.



**SPECIFICATIONS:**

**MATERIALS:**

BASE: PA (HIGH-TEMP. NYLON) UL94V-0  
 COVER: PA (HIGH-TEMP. NYLON) UL94V-0  
 ACTUATOR: LCP UL94V-0  
 CONTACT: COPPER ALLOY, GOLD (in contact area)  
 OVER NICKEL PLATE  
 TERMINAL: BRASS ALLOY, GOLD PLATE  
 TAPE: POLYAMIDE.

**ELECTRICAL:**

CONTACT RATING: NON-SWITCHING 100mA @ 50 VDC.  
 SWITCHING: 25mA @ 24 VDC.  
 INITIAL CONTACT RESISTANCE: 100mΩ MAX. @ 2 VDC. 10mA.  
 INSULATION RESISTANCE: 100 MEGOHMS MIN. @ 500 VDC,  
 1 MINUTE +/- 5 SECONDS.  
 DIELECTRIC STRENGTH: 100 VAC (50 OR 60 HZ), 1 MINUTE.  
 DURABILITY: 2,000 CYCLES.  
 CAPACITANCE: 5 pF MAX @ 1 MHz +/- 10 KHz.

**MECHANICAL:**

OPERATING FORCE: 800gf MAX.

**ENVIRONMENTAL:**

OPERATING TEMPERATURE: -20°C TO +85°C.  
 STORAGE TEMPERATURE: -40°C TO +85°C.  
 SOLDER HEAT RESISTANCE PER 109-201, CONDITION B.  
 SOLDERABILITY PER JIS C 0050 & JIS C 0053.

**NOTES:**

- ALL MATERIALS AND FINISHES SHALL COMPLY WITH EU DIRECTIVE 2002/95/EC OF 27 JAN 2003 (ROHS).



TUBE PACKAGING.



TAPE AND REEL PACKAGING.

TAPE	ACTUATOR TYPE	ACTUATION PUSH	NOTE	B	A	No OF POSITION	TE DESCRIPTIVE PART NUMBER	TE PART NUMBER
YES	SHORT	UP ON	3	22.86	25.30	10	EDSP10SGRFSTR04	6-2319764-0
				[.900]	[.996]			
				17.78	20.22	08	EDSP08SGRFSTR04	5-2319764-9
				[.700]	[.796]			
				12.70	15.14	06	EDSP06SGRFSTR04	5-2319764-8
				[.500]	[.596]			
		7.62		10.06	04	EDSP04SGRFSTR04	5-2319764-7	
		[.300]		[.396]				
		2.54		4.98	02	EDSP02SGRFSTR04	5-2319764-6	
		[.100]		[.196]				
		22.86		25.30	10	EDSP10SGRNSTR04	5-2319764-5	
		[.900]		[.996]				
17.78	20.22	08	EDSP08SGRNSTR04	5-2319764-4				
[.700]	[.796]							
12.70	15.14	06	EDSP06SGRNSTR04	5-2319764-3				
[.500]	[.596]							

THIS DRAWING IS A CONTROLLED DOCUMENT. DWN 12MAY2017 SHIVAKUMAR S S  
 CHK 12MAY2017 ALEXANDER SHARPE  
 APVD 12MAY2017 ALEXANDER SHARPE

**TE** TE Connectivity

NAME: PIANO DIP SWITCH END STACKABLE

SIZE: A2 CAGE CODE: 00779 DRAWING NO: 2319764 RESTRICTED TO: -

MATERIAL: - FINISH: - WEIGHT: - SCALE: 1:1 SHEET: 4 OF 4 REV: A

CUSTOMER DRAWING

2319764