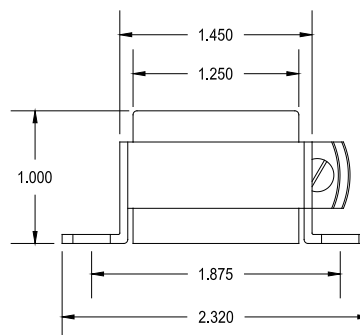
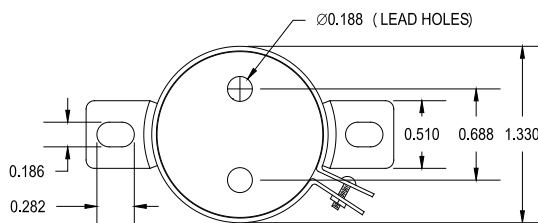


140PEX

CHASSIS MOUNT – SHIELDED
IMPEDANCE MATCHING TRANSFORMER


This transformer operates in the 20 Hz to 20 KHz range. The metal can provides excellent shielding from a broad range of external sources. While the nickel core provides high permeability combined with low losses.

Typical applications Input/output Isolation, Line Matching, Driver, Hybrid applications.



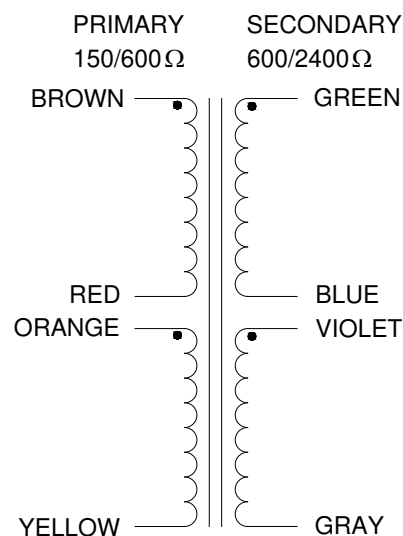
ELECTRICAL SPECIFICATIONS

| Characteristic | Typical |
|----------------------|--------------------------|
| Input Impedance | 150/600 Ω |
| Output Impedance | 600/2400 Ω |
| Output Power | 10.0 dbm |
| DCR | |
| Primary | 58.0 Ω |
| BRN – RED | 29.0 Ω |
| ORG - YEL | 29.0 Ω |
| Secondary | 190.0 Ω |
| GRN – BLU | 95.0 Ω |
| VIO - GRY | 95.0 Ω |
| Inductance | @ 1.0 kHz, 1.0 V OC |
| Primary | 14.5 H |
| Secondary | 55.0 H |
| Impedance | @ 1.0 kHz, 1.0 V OC |
| Primary | 7.0 kΩ |
| Secondary | 26.0 kΩ |
| Frequency Response | ±1db from 20 Hz to 20KHz |
| Turns ratio | 1:1, 1:2, 1:4 |
| Insertion Loss | <0.8 db |
| Return Loss | 30 db |
| Longitudinal balance | -70 db |
| Dielectric Strength | 500 Vrms |

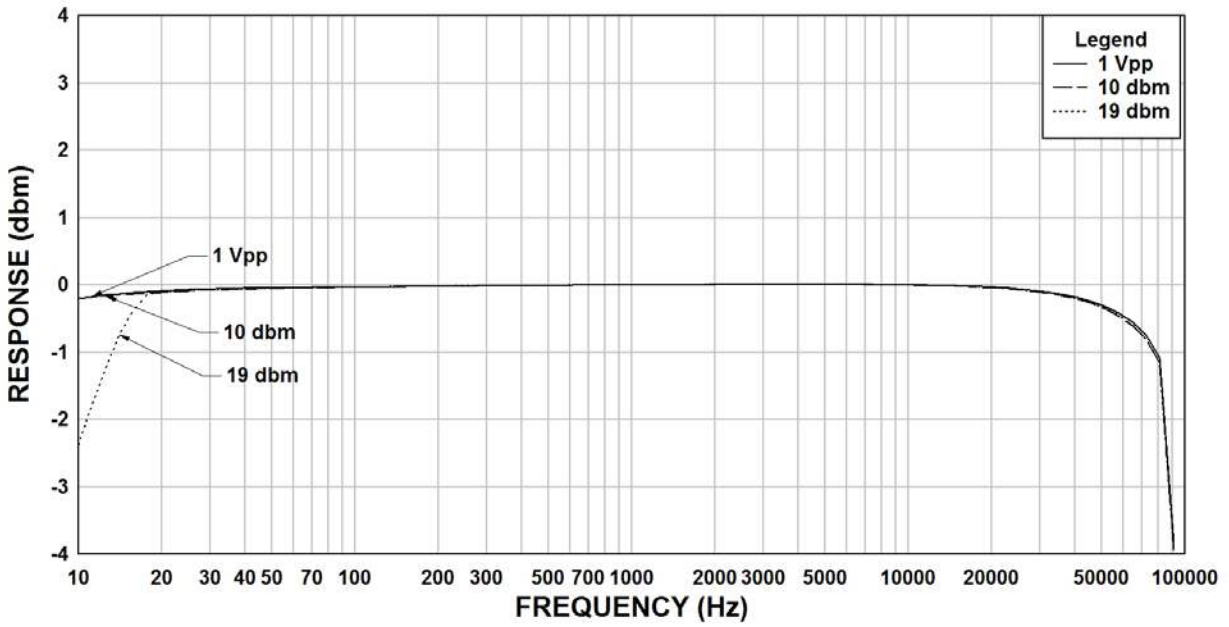


140PEX
5mW 20Hz - 20kHz
BRN-RED & ORG-YEL: 150/600 Ω
GRN-BLY & VIO-GRY: 600/2400 Ω
MADE IN CANADA

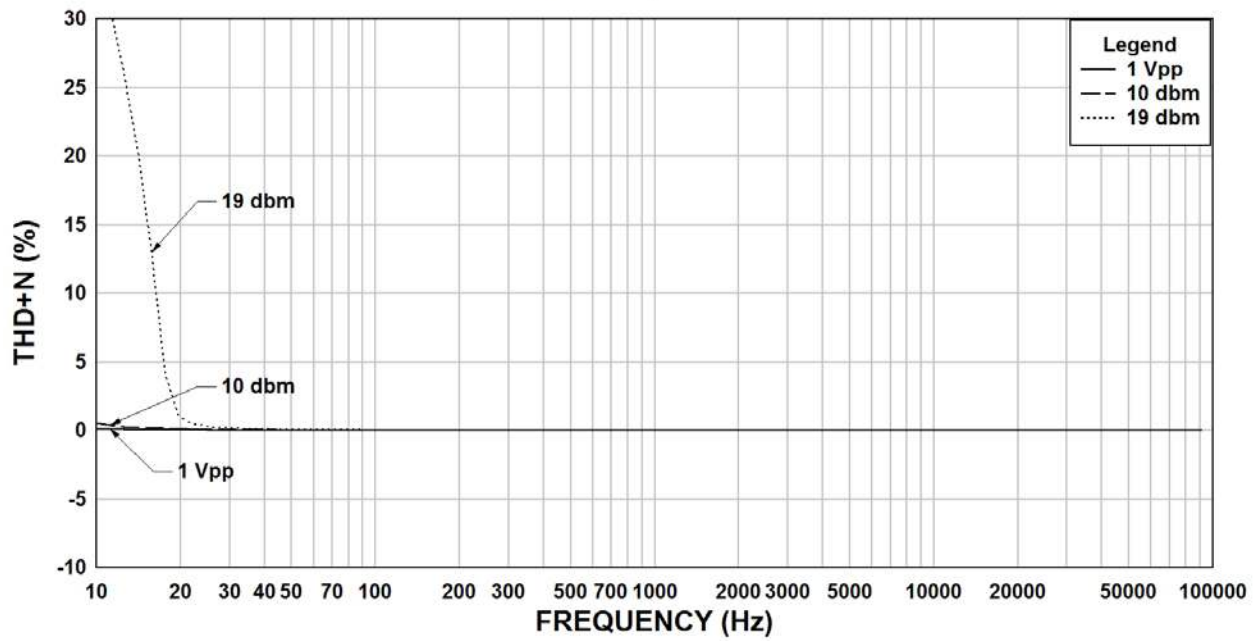
SCHEMATIC DIAGRAM



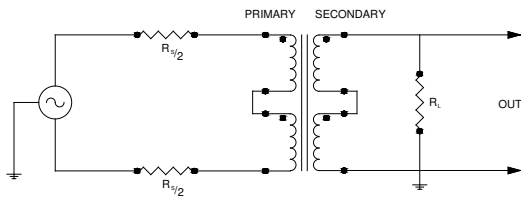
140PEX Rs=600, RI=2400 Frequency Response



140PEX Rs=600, RI=2400 THD+N



TYPICAL TEST CIRCUIT



Measurement instruments
 Hp4192a impedance analyzer
 Hp3456a DVM
 Keithley 2002 DVM
 D scope series iii audio analyzer

This drawing and the information in it is the property of Hammond Manufacturing. It may not be reproduced, transmitted or used in any manner whatsoever without the written permission of Hammond Manufacturing. Data subject to change without notice.