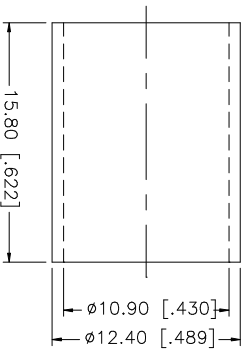
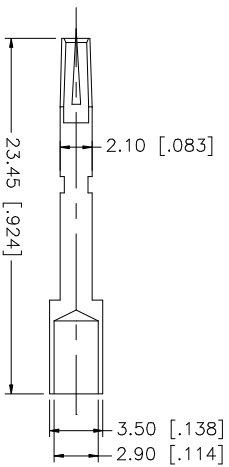
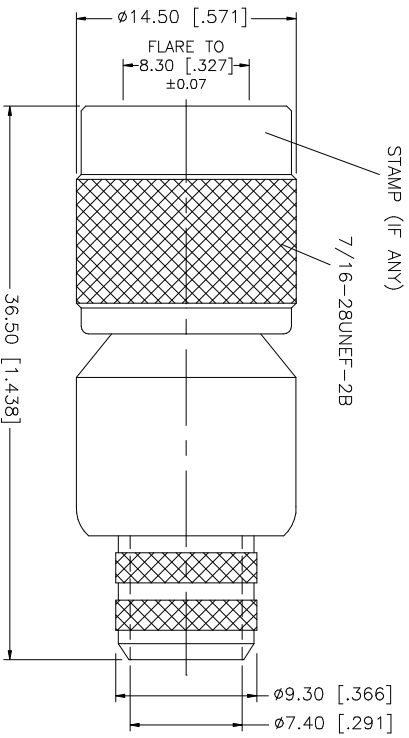
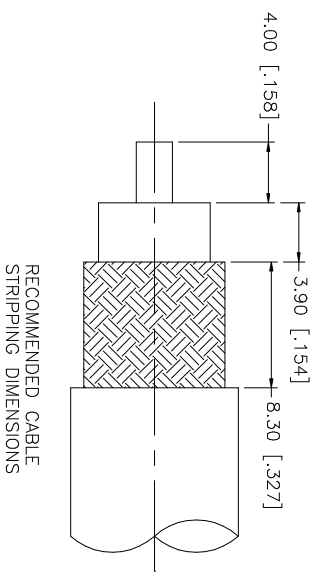


REV.	DATE	DESCRIPTION
A	04/05/03	UPDATE DRAWING FORMAT



- NOTE:
1. CRIMPED FERRULE
HEX CRIMP SIZE .429"
 2. CONTACT PIN TO SOLDER
OR .118" HEX CRIMP

Amphenol Connex

PART DESCRIPTION
TNC REVERSE POLARITY CRIMP PLUG
(FOR BELDEN 8214, 9913 LMR 400 CABLE)

QTY	DESCRIPTION	MATERIAL	FINISH	DO NOT SCALE DRAWING	CAD FILE	DWG. NO.	REV.	SIZE	SCALE
1	SHELL/BODY	BRASS	NICKEL	1.180 - 4.724 = ± 0.020"	C:/122/122393RP.DWG	122393RP.DWG	A	A	NA
1	INSULATOR	TEFLON	NATURAL	.315 - 1.180 = ± 0.015"					
1	CONTACT PIN	PHOS. BRONZE	GOLD	.020 - .315 = ± 0.007"					
1	GASKET	RUBBER	RED	0.5 - 8mm ± 0.20mm					
1	FERRULE	COPPER	NICKEL	8 - 30mm ± 0.40mm					
1	INSULATOR	TEFLON	NATURAL	30 - 120mm ± 0.50mm					
1	CONTACT PIN	PHOS. BRONZE	GOLD	0.5 - 8mm ± 0.20mm					
1	INSULATOR	TEFLON	NATURAL	8 - 30mm ± 0.40mm					
1	GASKET	RUBBER	RED	30 - 120mm ± 0.50mm					
1	FERRULE	COPPER	NICKEL	0.5 - 8mm ± 0.20mm					
1	INSULATOR	TEFLON	NATURAL	8 - 30mm ± 0.40mm					
1	CONTACT PIN	PHOS. BRONZE	GOLD	0.5 - 8mm ± 0.20mm					
1	SHELL/BODY	BRASS	NICKEL	1.180 - 4.724 = ± 0.020"					
1	DESCRIPTION	MATERIAL	FINISH	DO NOT SCALE DRAWING					