

Mounting instruction

1. CODING BACKPLANE

Kodierung Rückwand :

Vorgang :

1. Führungsstift V23552-B8000-Z19* in die Rückwandleiterplatte von Hand eindrücken.
2. Führungsstift mittels Schraube V23552-B9100-Z99* gegen die Leiterplatte anschrauben.
3. Kodierschlüssel V23552-B9000-Z*** mittels Montagewerkzeug V23599-M5026-A2 bis auf Anschlag auf den Führungsstift pressen so daß die Ziffer nach rechts zeigt. (Siehe Bild 3)
Die Ziffer entspricht der Kodenummer.
Siehe dazu die Kodierungsübersicht auf Blatt 3 bis 6.

Coding Backplane :

Procedure :

1. Push guide pin V23552-B8000-Z19* into the backplane by hand.
2. Screw the guide pin onto the backplane by means of screw V23552-B9100-Z99*.
3. Press coding key V23552-B9000-Z*** on the guide pin till flush against the backplane by means of mounting tool V23599-M5026-A2, with the digit to the right. (see figure 3)
The digit defines the code number. See survey on pages 3 to 6.

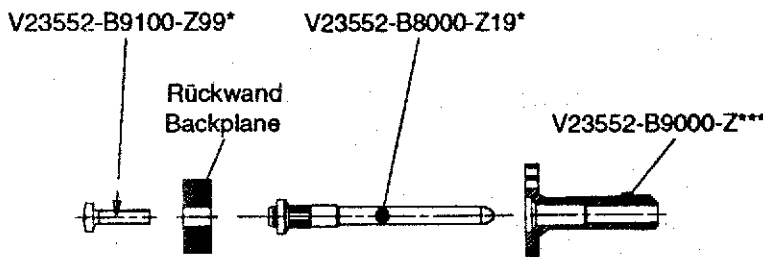


Bild 1/ Fig. 1 : Einzelteile/Parts



Bild 2/ Fig. 2 : Nach Montage/After mounting

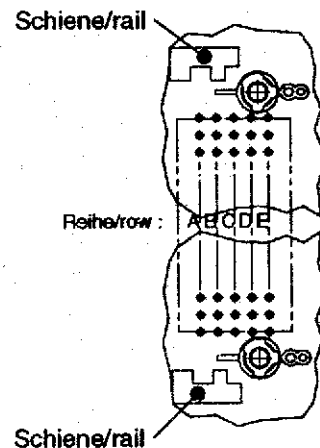


Bild 3/ Fig. 3 : Position der Ziffer/Position of digit

Remark: all mentioned part numbers are expired, see page 7 for the corresponding new numbers

2. CODING PCB

Kodierung Baugruppe :

Vorgang :

1. Kodierbox V23552-A8000-Z19*
in die Leiterplatte einpressen.
(Werkzeug ist abhängig der
Presse.)
2. Kodierschlüssel
V23552-A9000-Z9** wird mittels
Werkzeug V23599-M5026-A4 in die
Kodierbox montiert.
Sie muß so montiert werden daß
die bedeutende Ziffer nach oben
zeigt. Siehe dazu Bild 6.
Die bedeutende Ziffer entspricht
der Kodenummer. Siehe dazu die
Kodierungsübersicht auf Blatt
3 bis 6.

Coding PCB :

Procedure :

1. Press coding box
V23552-A8000-Z19* into
the PCB (tool depending
on press type).
2. Mount the coding key
V23552-A9000-Z9** into
the coding box with
mounting tool
V23599-M5026-A4.
The significant digit
must be on top (see
figure 6).
The significant digit
defines the code number
(see coding survey on
pages 3 to 6).

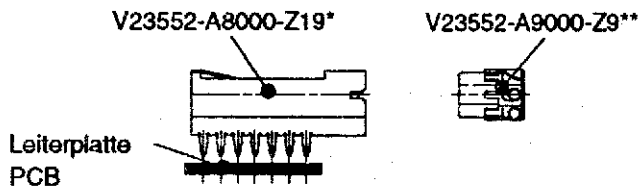


Bild 4/Fig. 4 : Einzelteile/Parts

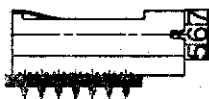


Bild 5/Fig. 5 : Nach Montage/After mounting

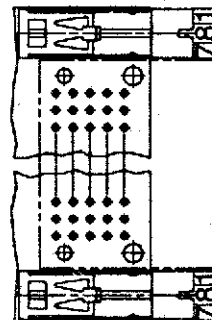


Bild 6/Fig. 6 : Bedeutende Ziffer (8) oben
Significant digit (8) on top

Remark: all mentioned part numbers are expired, see page 7 for the corresponding new numbers

3. CODING SURVEY

Kodierungsübersicht :

Coding Survey :

Kode- nummer/ Code number	Farbe/ Colour	Kodierschlüssel Rückwand/ Coding key backplane		Kodierschlüssel Baugruppe/ Coding key PCB	
		Position/ Position	Sachnummer/ Partnumber	Position/ Position	Sachnummer/ Partnumber
01	RAL 1018 Gelb/ yellow		V23552-B9000 -Z11*		V23552-A9000 -Z91*
02			V23552-B9000 -Z21*		
03			V23552-B9000 -Z31*		
04			V23552-B9000 -Z41*		
05			V23552-B9000 -Z51*		
06			V23552-B9000 -Z61*		
07			V23552-B9000 -Z71*		
08			V23552-B9000 -Z81*		
09	RAL 2003 Orange/ orange		V23552-B9000 -Z12*		V23552-A9000 -Z92*
10			V23552-B9000 -Z22*		
11			V23552-B9000 -Z32*		
12			V23552-B9000 Z42*		
13			V23552-B9000 -Z52*		
14			V23552-B9000 -Z62*		
15			V23552-B9000 -Z72*		
16			V23552-B9000 -Z82*		

Remark: all mentioned part numbers are expired, see page 7 for the corresponding new numbers

Kode- nummer/ Code number	Farbe/ Colour	Kodierschlüssel Rückwand/ Coding key backplane		Kodierschlüssel Baugruppe/ Coding key PCB	
		Position/ Position	Sachnummer/ Partnumber	Position/ Position	Sachnummer/ Partnumber
17	RAL 8001 Braun/ brown		V23552-B9000 -Z13*		V23552-A9000 -Z93*
18			V23552-B9000 -Z23*		
19			V23552-B9000 -Z33*		
20			V23552-B9000 -Z43*		
21			V23552-B9000 -Z53*		
22			V23552-B9000 -Z63*		
23			V23552-B9000 -Z73*		
24			V23552-B9000 -Z83*		
25	RAL 5012 Blau/ blue		V23552-B9000 -Z14*		V23552-A9000 -Z94*
26			V23552-B9000 -Z24*		
27			V23552-B9000 -Z34*		
28			V23552-B9000 -Z44*		
29			V23552-B9000 -Z54*		
30			V23552-B9000 -Z64*		
31			V23552-B9000 -Z74*		
32			V23552-B9000 -Z84*		

Remark: all mentioned part numbers are expired, see page 7 for the corresponding new numbers

Kode- nummer/ Code number	Farbe/ Colour	Kodierschlüssel Rückwand/ Coding key backplane		Kodierschlüssel Baugruppe/ Coding key PCB			
		Position/ Position	Sachnummer/ Partnumber	Position/ Position	Sachnummer/ Partnumber		
33	RAL 6027 Türkis/ turquoise		V23552-B9000 -Z15*		V23552-A9000 -Z95*		
34			V23552-B9000 -Z25*				
35			V23552-B9000 -Z35*				
36			V23552-B9000 -Z45*				
37			V23552-B9000 -Z55*				
38			V23552-B9000 -Z65*				
39			V23552-B9000 -Z75*				
40			V23552-B9000 -Z85*				
41		RAL 6018 Grün/ green		V23552-B9000 -Z16*			V23552-A9000 -Z96*
42				V23552-B9000 -Z26*			
43			V23552-B9000 -Z36*				
44			V23552-B9000 -Z46*				
45			V23552-B9000 -Z56*				
46			V23552-B9000 -Z66*				
47			V23552-B9000 -Z76*				
48			V23552-B9000 -Z86*				

Remark: all mentioned part numbers are expired, see page 7 for the corresponding new numbers

Kode- nummer/ Code number	Farbe/ Colour	Kodierschlüssel Rückwand/ Coding key backplane		Kodierschlüssel Baugruppe/ Coding key PCB	
		Position/ Position	Sachnummer/ Partnumber	Position/ Position	Sachnummer/ Partnumber
49	RAL 9010 Weiß/ white		V23552-B9000 -Z17*		V23552-A9000 -Z97*
50			V23552-B9000 -Z27*		
51			V23552-B9000 -Z37*		
52			V23552-B9000 -Z47*		
53			V23552-B9000 -Z57*		
54			V23552-B9000 -Z67*		
55			V23552-B9000 -Z77*		
56			V23552-B9000 -Z87*		
57	RAL 3015 Rosa/ pink		V23552-B9000 -Z18*		V23552-A9000 -Z98*
58			V23552-B9000 -Z28*		
59			V23552-B9000 -Z38*		
60			V23552-B9000 -Z48*		
61			V23552-B9000 -Z58*		
62			V23552-B9000 -Z68*		
63			V23552-B9000 -Z78*		
64			V23552-B9000 -Z88*		

Remark: all mentioned part numbers are expired, see page 7 for the corresponding new numbers

4. PART XREF TABLE

Coding key backplane

old part nr	new part nr
V23552-B9000-Z112	3-1393702-4
V23552-B9000-Z122	3-1393702-6
V23552-B9000-Z132	3-1393702-8
V23552-B9000-Z142	4-1393702
V23552-B9000-Z152	4-1393702-2
V23552-B9000-Z162	4-1393702-4
V23552-B9000-Z172	4-1393702-6
V23552-B9000-Z182	4-1393702-8
V23552-B9000-Z212	5-1393702-0
V23552-B9000-Z222	5-1393702-2
V23552-B9000-Z232	4-1393703-3
V23552-B9000-Z242	5-1393702-5
V23552-B9000-Z252	5-1393702-7
V23552-B9000-Z262	5-1393702-9
V23552-B9000-Z272	6-1393702-1
V23552-B9000-Z282	6-1393702-3
V23552-B9000-Z312	6-1393702-5
V23552-B9000-Z322	4-1393703-4
V23552-B9000-Z332	6-1393702-8
V23552-B9000-Z342	7-1393702-0
V23552-B9000-Z352	4-1393703-5
V23552-B9000-Z362	7-1393702-3
V23552-B9000-Z372	7-1393702-5
V23552-B9000-Z382	7-1393702-7
V23552-B9000-Z412	7-1393702-9
V23552-B9000-Z422	4-1393703-6
V23552-B9000-Z432	4-1393703-7
V23552-B9000-Z442	8-1393702-3
V23552-B9000-Z452	4-1393703-8
V23552-B9000-Z462	8-1393702-6
V23552-B9000-Z472	8-1393702-8
V23552-B9000-Z482	9-1393702
V23552-B9000-Z512	9-1393702-2
V23552-B9000-Z522	4-1393703-9
V23552-B9000-Z532	5-1393703-0
V23552-B9000-Z542	5-1393703-1
V23552-B9000-Z552	9-1393702-7
V23552-B9000-Z562	9-1393702-9
V23552-B9000-Z572	1393703-2
V23552-B9000-Z582	5-1393703-2
V23552-B9000-Z612	1393703-5
V23552-B9000-Z622	5-1393703-3
V23552-B9000-Z632	5-1393703-4
V23552-B9000-Z642	5-1393703-5
V23552-B9000-Z652	1-1393703-0
V23552-B9000-Z662	1-1393703-2
V23552-B9000-Z672	1-1393703-4
V23552-B9000-Z682	5-1393703-6
V23552-B9000-Z712	1-1393703-7
V23552-B9000-Z722	5-1393703-7
V23552-B9000-Z732	5-1393703-8
V23552-B9000-Z742	5-1393703-9
V23552-B9000-Z752	2-1393703-1
V23552-B9000-Z762	2-1393703-3
V23552-B9000-Z772	2-1393703-5
V23552-B9000-Z782	6-1393703-0

Coding key backplane (cont'd)

old part nr	new part nr
V23552-B9000-Z812	2-1393703-8
V23552-B9000-Z822	6-1393703-1
V23552-B9000-Z832	6-1393703-2
V23552-B9000-Z842	6-1393703-3
V23552-B9000-Z852	3-1393703-2
V23552-B9000-Z862	3-1393703-4
V23552-B9000-Z872	3-1393703-6
V23552-B9000-Z882	6-1393703-4

Coding key PCB

old part nr	new part nr
V23552-A9000-Z912	1393702-9
V23552-A9000-Z922	1-1393702-1
V23552-A9000-Z932	1-1393702-3
V23552-A9000-Z942	1-1393702-5
V23552-A9000-Z952	1-1393702-7
V23552-A9000-Z962	1-1393702-9
V23552-A9000-Z972	2-1393702-1
V23552-A9000-Z982	2-1393702-3

Guide pin

old part nr	new part nr
V23552-B8000-Z192	3-1393702-0

Screws

old part nr	new part nr
V23552-B9100-Z992	4-1393703-1

Mounting tools

old part nr	new part nr
V23599-M5026-A2	7-1393490-5
V23599-M5026-A4	7-1393490-7

Coding box

old part nr	new part nr
V23552-A8000-Z192	1393702-5