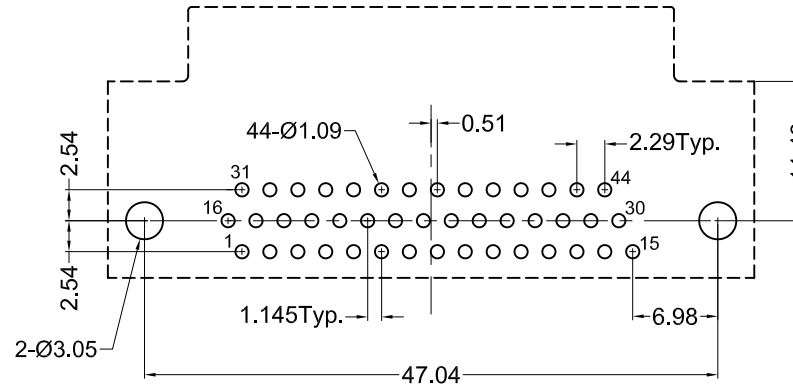
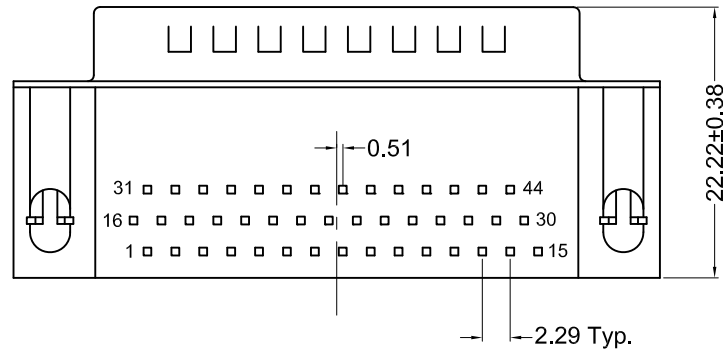


**Material and Finish**

Shell: Steel, Nickel Plated  
 Insulator: PBT thermoplastic with glass-fiber reinforcement, UL94V-0 rated  
 Color: Black  
 Contact Material: Plug - Brass  
 Contact Plating Options:  
 Standard: gold flash on mating end, tin on termination end, nickel underplate on entire contact  
 15 Option: 15u" gold on mating end, tin on termination end, nickel underplate on entire contact  
 30 Option: 30u" gold on mating end, tin on termination end, nickel underplate on entire contact



Recommended PCB Layout  
(Bottom View)

**Electrical Specifications**

Rated Current: 1.5A  
 Rated Voltage: 29Vac  
 Insulation Resistance: more than 1000 megohms at 500V DC  
 Contact Resistance: 13 milliohms max.  
 Dielectric Strength: 1000V for 1 minute  
 Durability Rating: 500 mating cycles min.  
 Operating Temperature: -55°C to +75°C

Part Number	Contact Area Plating Finish
K66X-B44P-N	Gold Flash (standard)
K66X-B44P-N15	15u" Gold (15 option)
K66X-B44P-N30	30u" Gold (30 option)



Tolerances
X.X ± 0.25
X.XX ± 0.15
Unless Stated Otherwise

REV.	DATE	DESCRIPTION	REV. BY	CHK. BY	DRAWN BY	DATE
A2	04/18/06	ECO #06-010	R. Aguirre	H. MA	R. Aguirre	10/05/05
A3	03/10/08	ECO #07-049	S. Vien	H. Ma		
A4	12/11/08	ECO #08-084	S. Vien	H. MA		
A5	06/13/14	ECO #14-027	H. MA	P. DalCanto	UNITS	mm
A6	02/22/16	ECO #15-019	H. MA	W. Cook		
A7	12/31/17	ECO #17-028	J. Elbanna	C. Furumasu		

**K66X-B44P-N**

HD, D-Sub, RoHS Compliant

44 Pos., Male, Grounding BoardLocks

