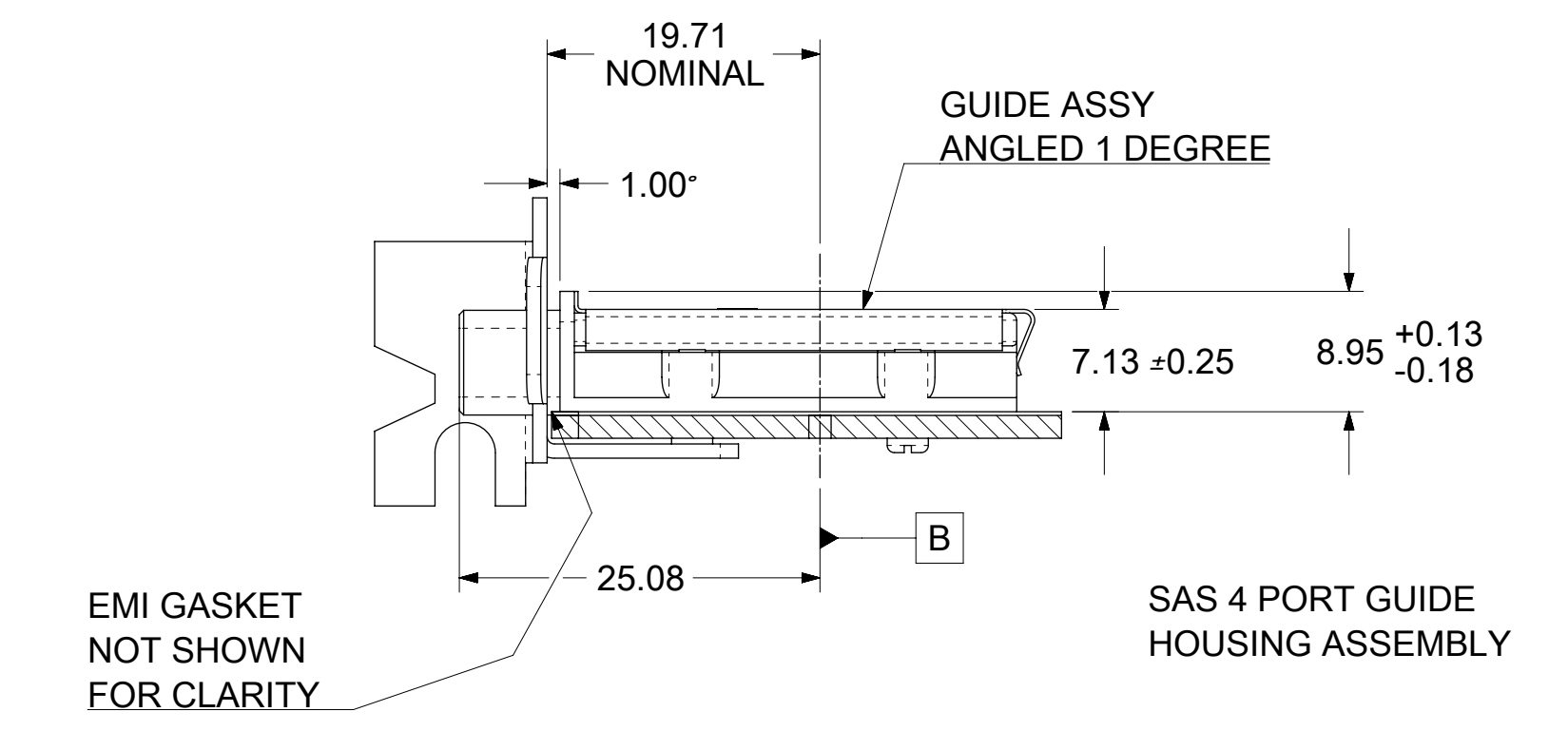


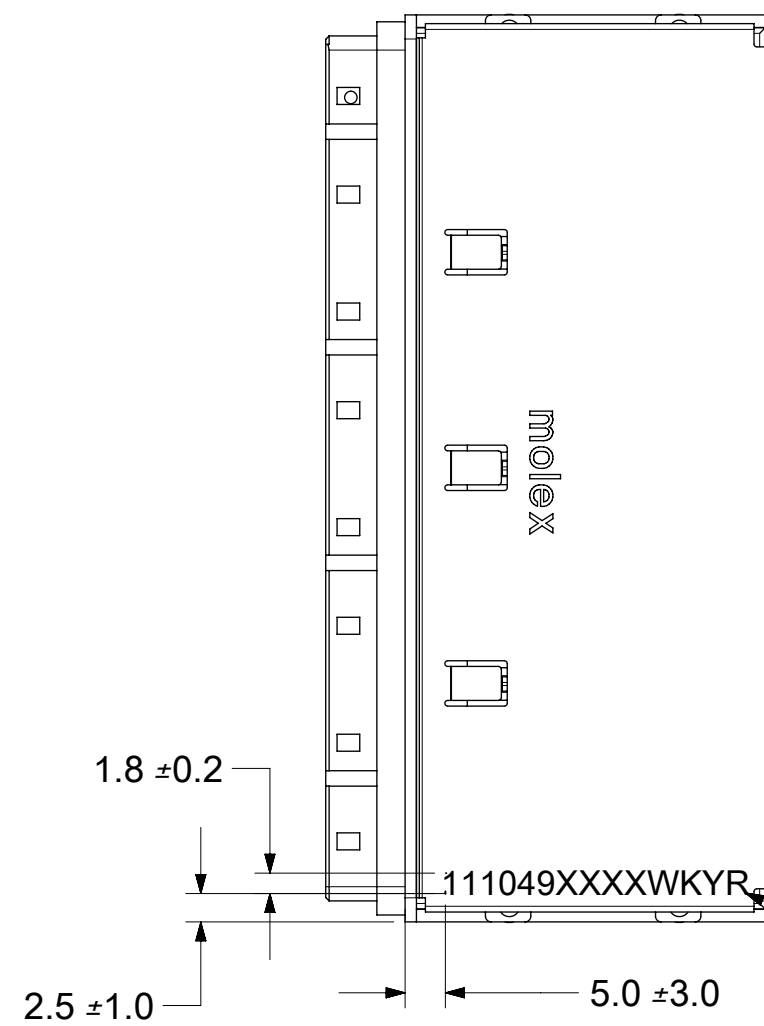
- NOTES:**
- REF. PCI EXPRESS CARD ELECTROMECHANICAL SPECIFICATION, REV 1.0a FOR BRACKET WINDOW LOCATION.
 - PCB AND BRACKET SHOWN FOR REFERENCE ONLY.
 - REF. SD-111048-100 FOR KEY POSITIONS
 - GUIDE HOUSING MOUNTING THREAD=M2 X 0.40, SEE SHEET 3 FOR SCREW LENGTH + TORQUE SPEC.
 - PLATE GROUND PAD WITH EMERSION SILVER OR GOLD.
 - MATERIAL:
GUIDE HOUSING - ZINC DIECAST, NICKEL PLATED
COVER - STAINLESS STEEL
 - THIS PRODUCT MEETS THE RESTRICTION OF HAZARDOUS SUBSTANCES IN ELECTRICAL AND ELECTRONIC EQUIPMENT (RoHS) DIRECTIVE (2002/95/EC)
 - GUIDE HOUSING PEGS FOR ALIGNMENT ONLY, DO NOT SOLDER.



PART NUMBER	PORT SIZE	KEY(S) PORT1	KEY(S) PORT2	KEY(S) PORT3	KEY(S) PORT4	IDENTIFIERS
-1110490117 VO	4	2,4	2,4	2,4	2,4	SAS 2.0 OUT PORT/END DEVICE
-1110490118 VO	4	4,6	4,6	4,6	4,6	SAS 2.0 IN PORT/END DEVICE
-1110490119 VO	4	4	4	4	4	SAS 2.0 UNIVERSAL PORT

THIS DRAWING CONTAINS INFORMATION THAT IS PROPRIETARY TO MOLEX ELECTRONIC TECHNOLOGIES, LLC AND SHOULD NOT BE USED WITHOUT WRITTEN PERMISSION

DIMENSION UNITS: mm	SCALE: 2:1	CURRENT REV DESC: OBSOLETE PART NUMBER	molex		
GENERAL TOLERANCES (UNLESS SPECIFIED)	ANGULAR TOL ± °	EC NO: 638770			
4 PLACES ±	3 PLACES ±	2 PLACES ±	1 PLACE ±	0 PLACES ±	DRWN: VLOKESHA 2020/04/27
					CHK'D: GGA 2020/07/21
					APPR: GGA 2020/07/21
					INITIAL REVISION:
					DRWN: NMUTHARAYAPP 2018/12/24
					APPR: RCHEN08 2019/01/15
DRAFT WHERE APPLICABLE MUST REMAIN WITHIN DIMENSIONS	THIRD ANGLE PROJECTION	DRAWING: C-SIZE	SERIES: 111049	MATERIAL NUMBER: SEE CHART	CUSTOMER: 1110490100
					DOC TYPE: PSD
					DOC PART: ASY
					REVISION: D1
					SHEET NUMBER: 1 OF 5

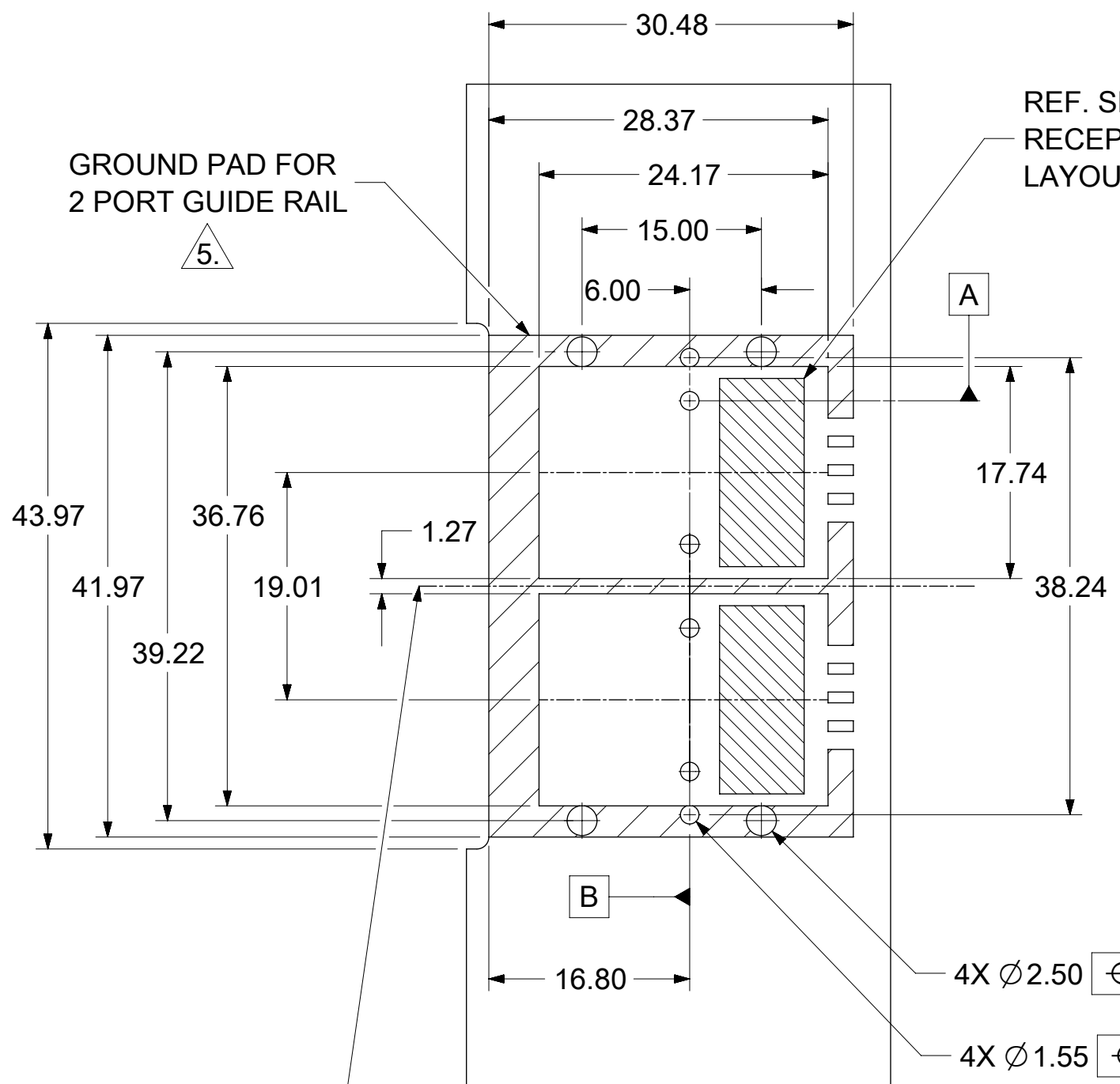


P/N AND WEEK/YEAR DATE CODE TO BE PRINTED ON THE TOP OF COMPLETED CAGE ASSEMBLY AS SHOWN. SEE TABLE BELOW FOR DATE CODE INFORMATION.

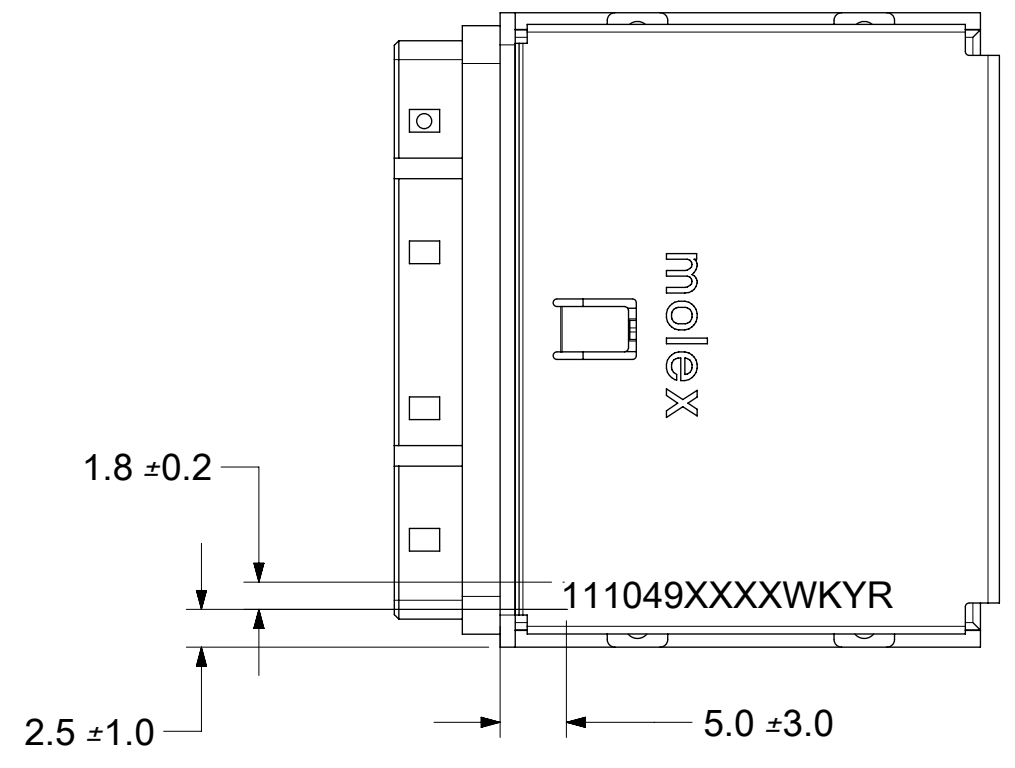
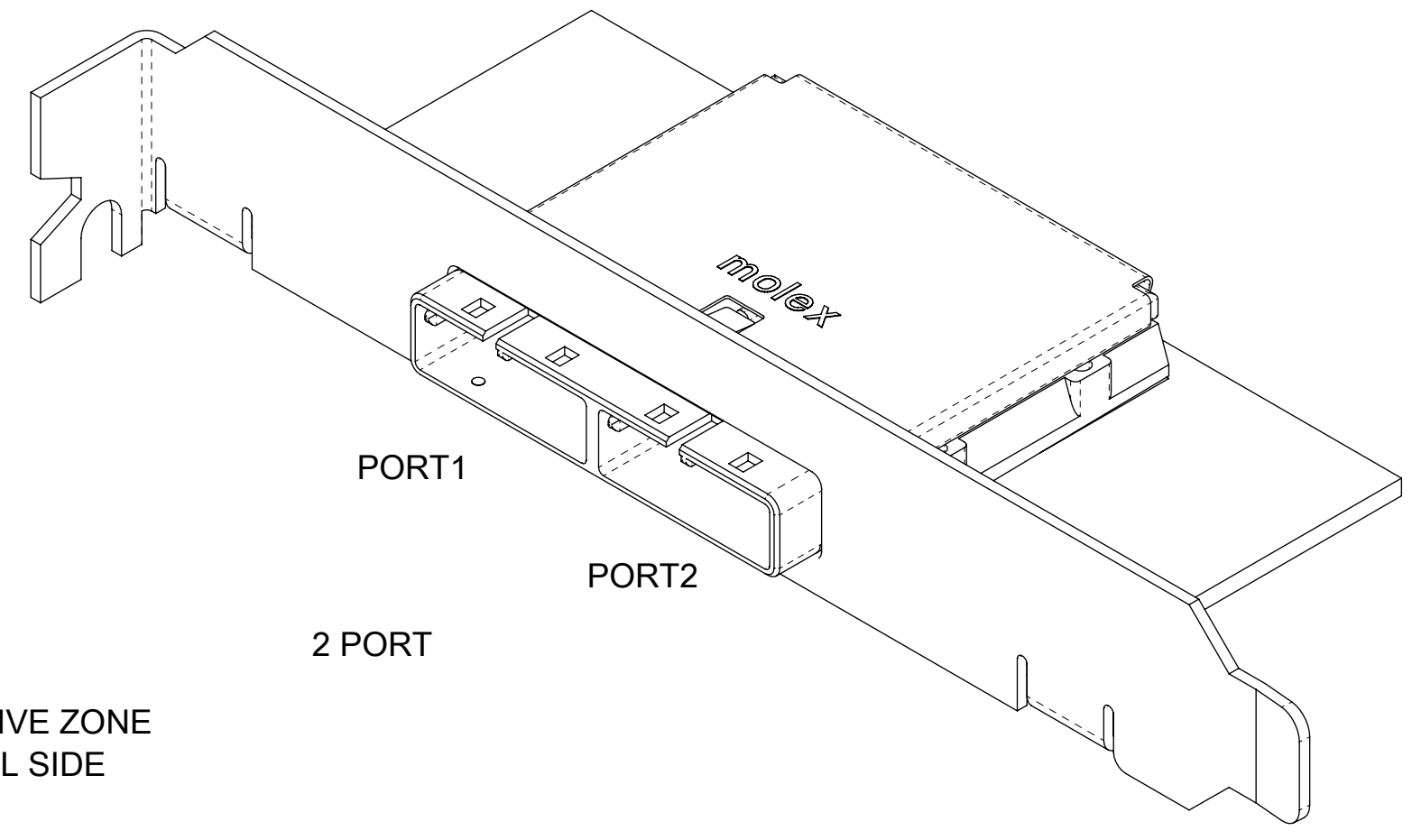
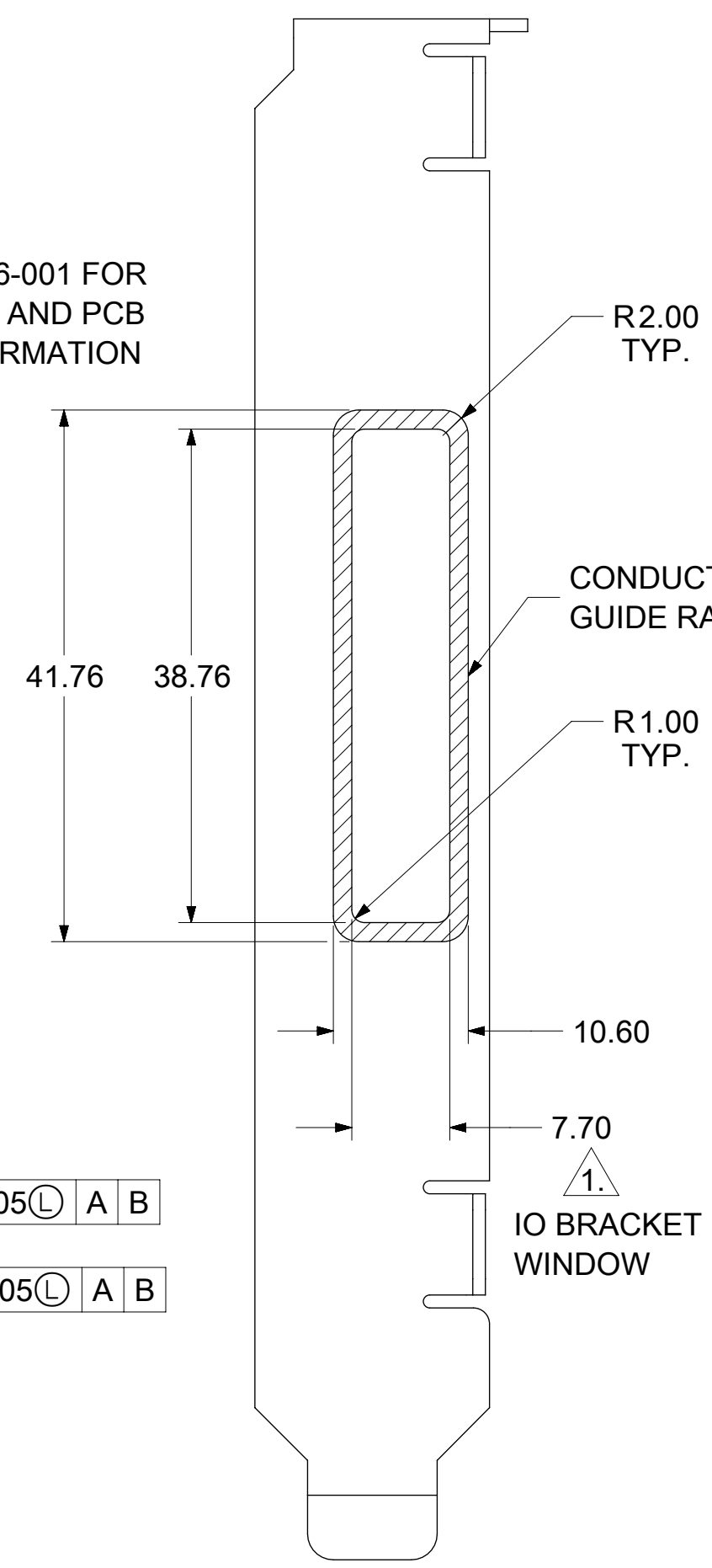
WEEK/YEAR DATE CODE TABLE	
WK	WEEK OF THE YEAR 01 THRU 52 (EXAMPLE: 01= FIRST WEEK OF YEAR 52= LAST WEEK OF YEAR)
YR	19, 20, 21 ETC.. (EXAMPLE: YEAR 2019= 19)

THIS DRAWING CONTAINS INFORMATION THAT IS PROPRIETARY TO MOLEX ELECTRONIC TECHNOLOGIES, LLC AND SHOULD NOT BE USED WITHOUT WRITTEN PERMISSION													
DIMENSION UNITS		SCALE		CURRENT REV DESC: OBSOLETE PART NUMBER				molex					
mm		1.5:1											
GENERAL TOLERANCES (UNLESS SPECIFIED)				EC NO: 638770 DRWN: VLOKESHA 2020/04/27 CHK'D: GGA 2020/07/21 APPR: GGA 2020/07/21 INITIAL REVISION: DRWN: NMUTHARAYAPP 2018/12/24 APPR: RCHEN08 2019/01/15				DOCUMENT NUMBER		DOC TYPE	DOC PART	REVISION	
ANGULAR TOL		± °						1110490100		PSD	ASY	D1	
4 PLACES		±						SEE CHART					
3 PLACES		±											
2 PLACES		±											
1 PLACE		±											
0 PLACES		±											
DRAFT WHERE APPLICABLE MUST REMAIN WITHIN DIMENSIONS				THIRD ANGLE PROJECTION		DRAWING		SERIES		SHEET NUMBER			
						C-SIZE		111049		2 OF 5			

DOCUMENT STATUS	P1	RELEASE DATE	2020/07/21	04:44:26
-----------------	----	--------------	------------	----------



43.22
(MIN CENTER TO CENTER RAIL SPACING USING M2X0.4 FLAT HEAD OR BUTTON HEAD SCREWS)



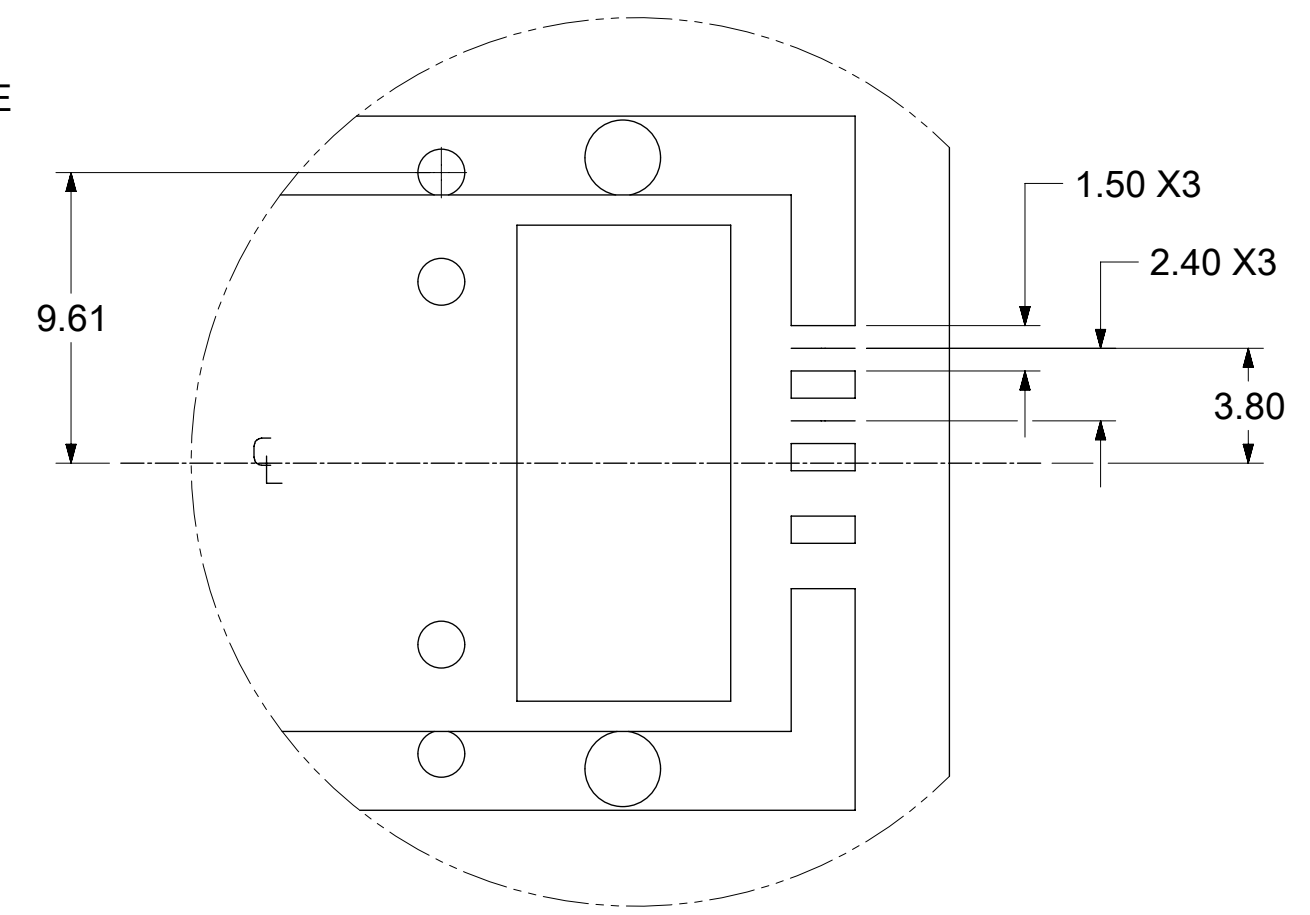
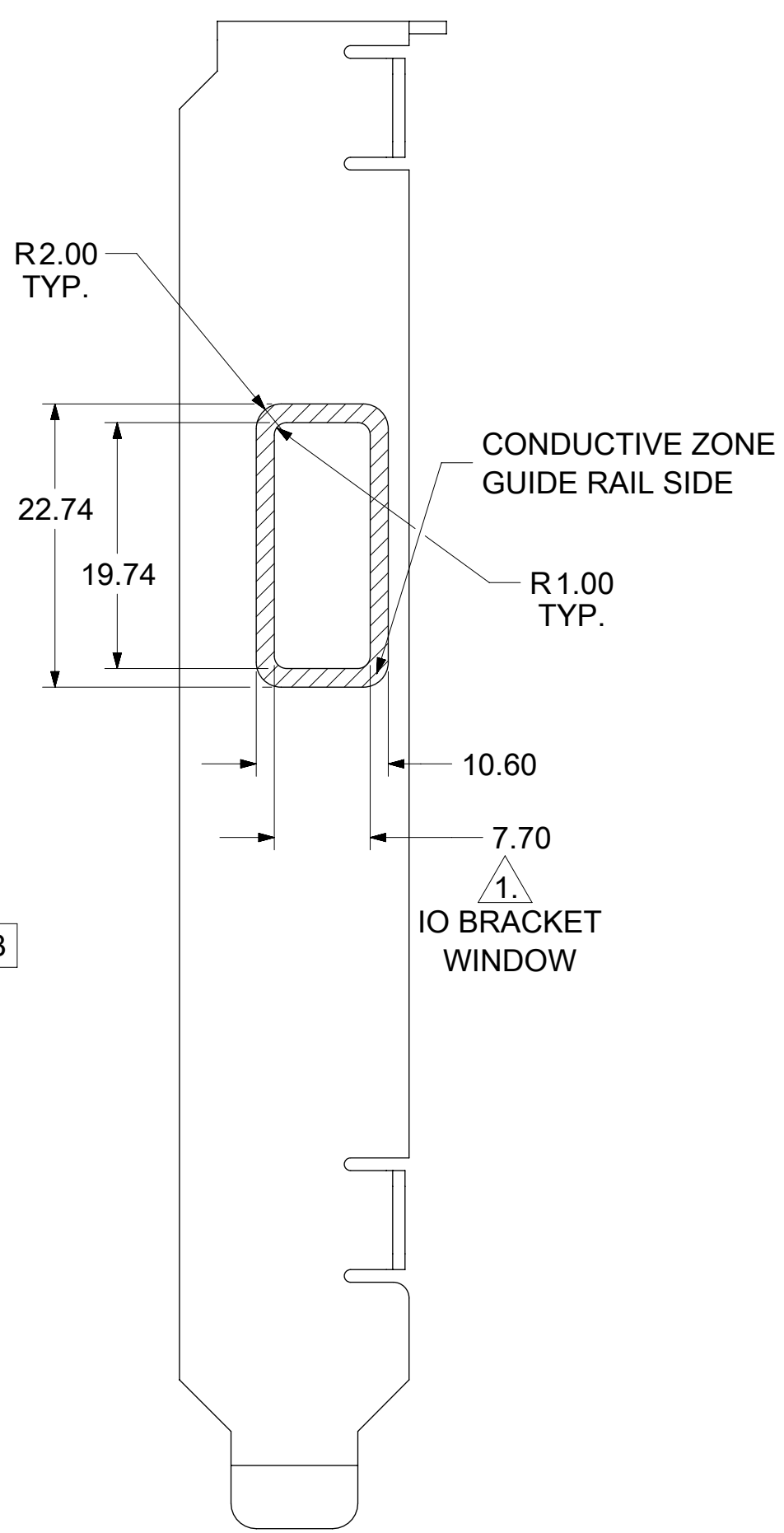
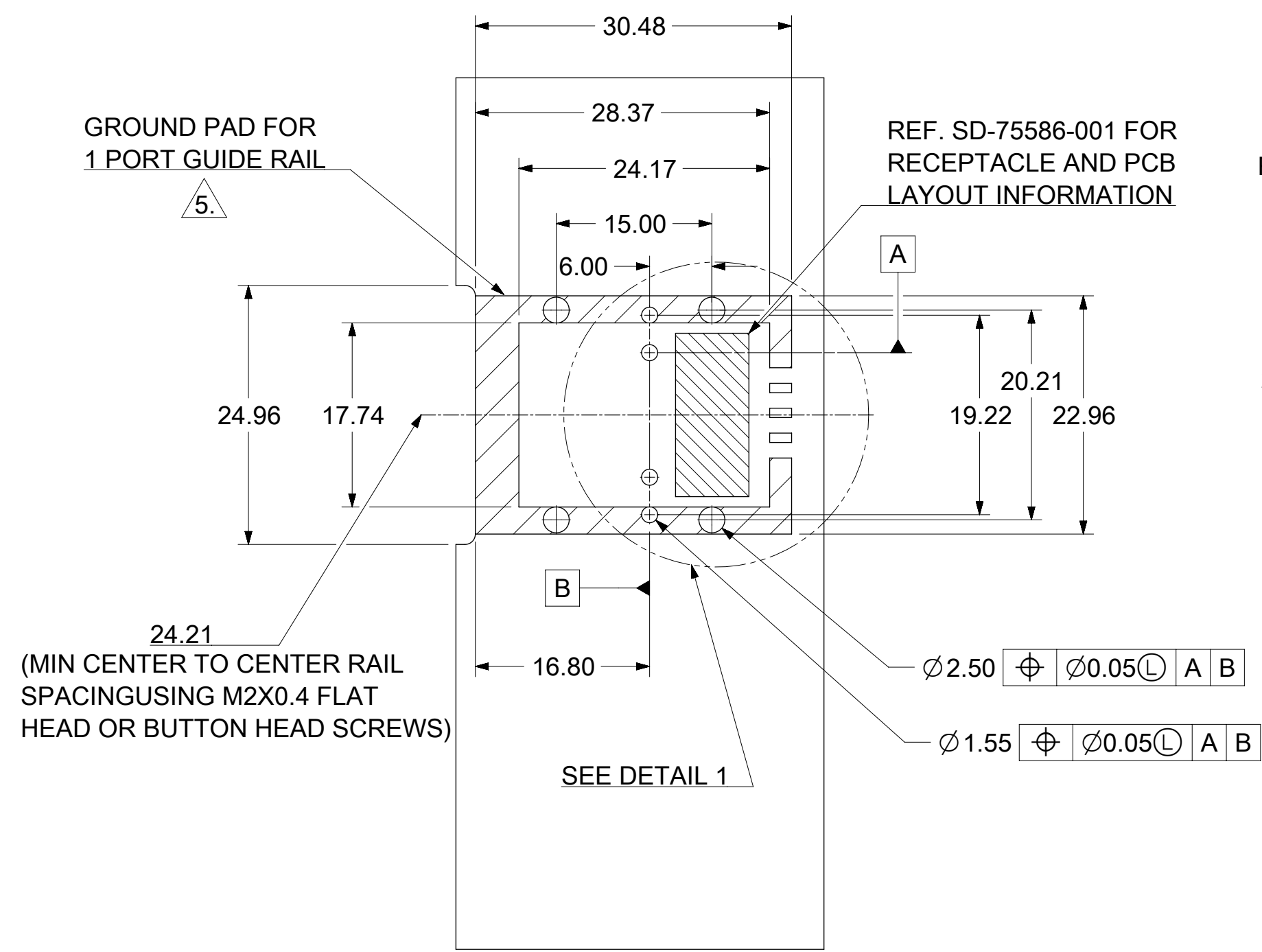
P/N AND WEEK/YEAR DATE CODE TO BE PRINTED ON THE TOP OF COMPLETED CAGE ASSEMBLY AS SHOWN. SEE TABLE BELOW FOR DATE CODE INFORMATION.

WEEK/YEAR DATE CODE TABLE	
WK	WEEK OF THE YEAR 01 THRU 52 (EXAMPLE: 01= FIRST WEEK OF YEAR 52= LAST WEEK OF YEAR)
YR	19, 20, 21 ETC.. (EXAMPLE: YEAR 2019= 19)

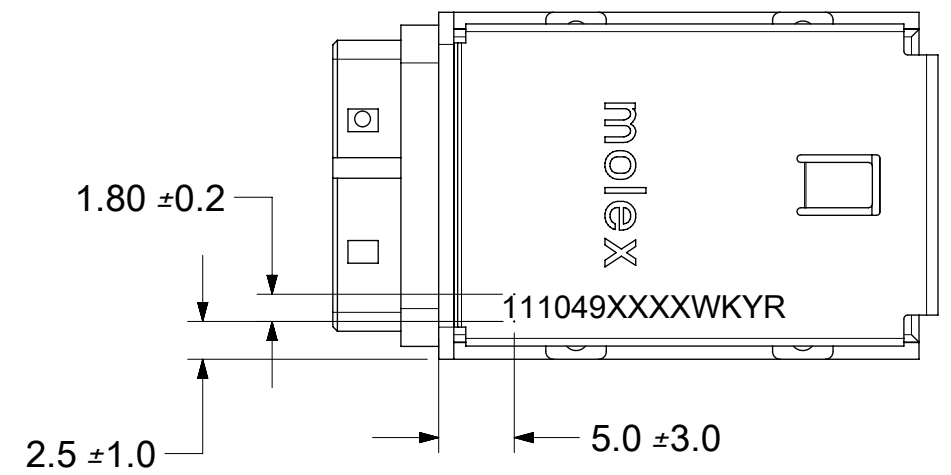
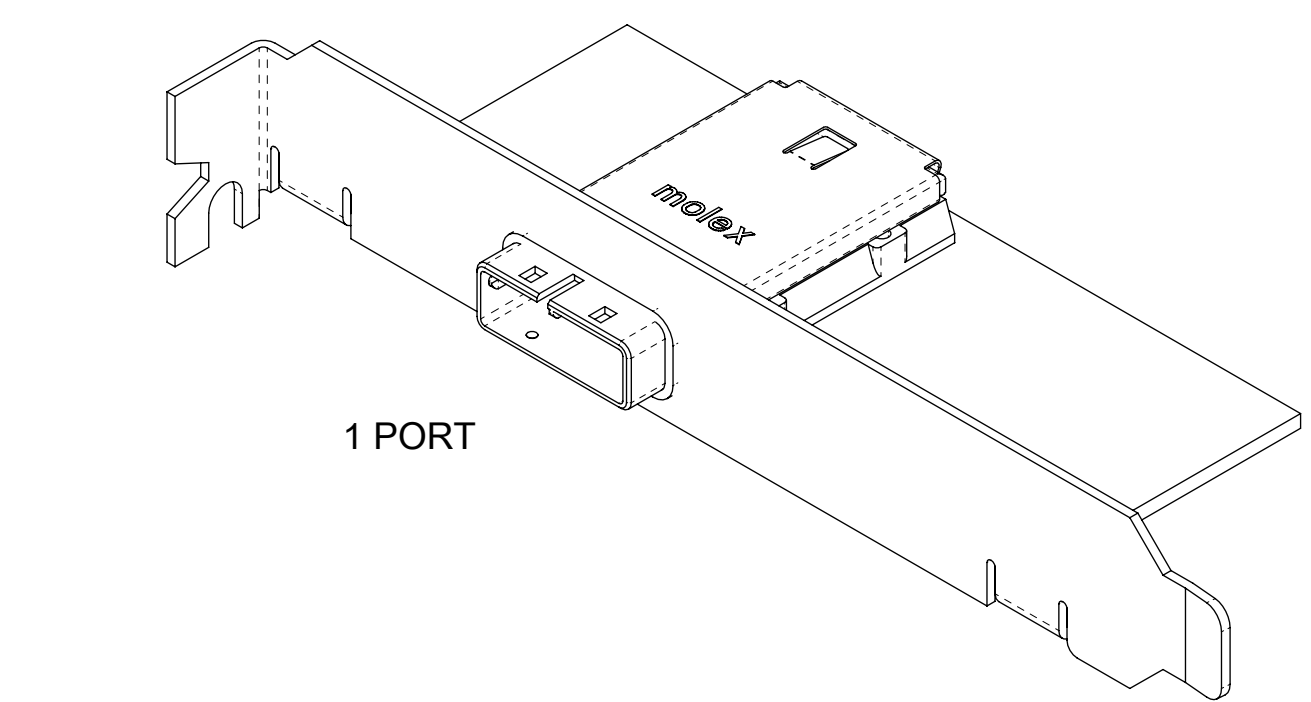
PART NUMBER	PORT SIZE	KEY(S) PORT1	KEY(S) PORT2	IDENTIFIERS
1110490114 VO	2	2,4	2,4	SAS 2.0 OUT PORT/END DEVICE
1110490115 VO	2	4,6	4,6	SAS 2.0 IN PORT/END DEVICE
1110490116	2	4	4	SAS 2.0 UNIVERSAL PORT

THIS DRAWING CONTAINS INFORMATION THAT IS PROPRIETARY TO MOLEX ELECTRONIC TECHNOLOGIES, LLC AND SHOULD NOT BE USED WITHOUT WRITTEN PERMISSION

DIMENSION UNITS	SCALE	CURRENT REV DESC: OBSOLETE PART NUMBER		molex	
mm	2:1				
GENERAL TOLERANCES (UNLESS SPECIFIED)				IPASS SAS 2.0 26CKT GUIDE HOUSING ASSEMBLY 1 DEGREE, MULTI PORT	
ANGULAR TOL	± °			PRODUCT CUSTOMER DRAWING	
4 PLACES	±	EC NO: 638770	2020/04/27	DOCUMENT NUMBER	
3 PLACES	±	DRWN: VLOKESHA	2020/07/21	1110490100	
2 PLACES	±	CHK'D: GGA	2020/07/21	DOC TYPE	DOC PART
1 PLACE	±	APPR: GGA	2020/07/21	PSD	ASY
0 PLACES	±	INITIAL REVISION:			D1
DRAFT WHERE APPLICABLE MUST REMAIN WITHIN DIMENSIONS		DRWN: NMUTHARAYAPP	2018/12/24	MATERIAL NUMBER	
THIRD ANGLE PROJECTION		APPR: RCHEN08	2019/01/15	CUSTOMER	SHEET NUMBER
		C-SIZE	111049	SEE CHART	3 OF 5



DETAIL 1
SCALE 4:1



P/N AND WEEK/YEAR DATE CODE TO BE PRINTED ON THE TOP OF COMPLETED CAGE ASSEMBLY AS SHOWN. SEE TABLE BELOW FOR DATE CODE INFORMATION.

WEEK/YEAR DATE CODE TABLE	
WK	WEEK OF THE YEAR 01 THRU 52 (EXAMPLE: 01= FIRST WEEK OF YEAR 52= LAST WEEK OF YEAR)
YR	19, 20, 21 ETC.. (EXAMPLE: YEAR 2019= 19)

PART NUMBER	PORT SIZE	KEY(S)	IDENTIFIERS
4110490114 VO	1	2,4	SAS 2.0 OUT PORT/END DEVICE
4110490112 VO	1	4,6	SAS 2.0 IN PORT/END DEVICE
1110490113	1	4	SAS 2.0 UNIVERSAL PORT

PCB THICKNESS	SCREW LENGTH	TORQUE(IN LBS)
1.6	5MM	2.3
2.38	6MM	2.3
3.2	6MM	2.3
X	+4MM MAX	2.3

THIS DRAWING CONTAINS INFORMATION THAT IS PROPRIETARY TO MOLEX ELECTRONIC TECHNOLOGIES, LLC AND SHOULD NOT BE USED WITHOUT WRITTEN PERMISSION

DIMENSION UNITS mm	SCALE 1:1	CURRENT REV DESC: OBSOLETE PART NUMBER	molex		
GENERAL TOLERANCES (UNLESS SPECIFIED)					
ANGULAR TOL ± °	4 PLACES ±	EC NO: 638770	PRODUCT CUSTOMER DRAWING		
3 PLACES ±	2 PLACES ±	DRWN: VLOKESHA 2020/04/27	DOCUMENT NUMBER		
1 PLACE ±	0 PLACES ±	CHK'D: GGA 2020/07/21	1110490100		
DRAFT WHERE APPLICABLE MUST REMAIN WITHIN DIMENSIONS		APPR: GGA 2020/07/21	CUSTOMER		SHEET NUMBER
THIRD ANGLE PROJECTION		INITIAL REVISION: DRWN: NMUTHARAYAPP 2018/12/24 APPR: RCHEN08 2019/01/15	SEE CHART		4 OF 5
DRAWING SERIES C-SIZE 111049		MATERIAL NUMBER		REVISON	

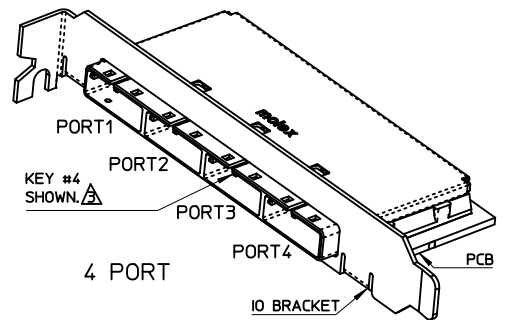
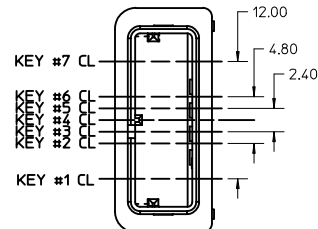
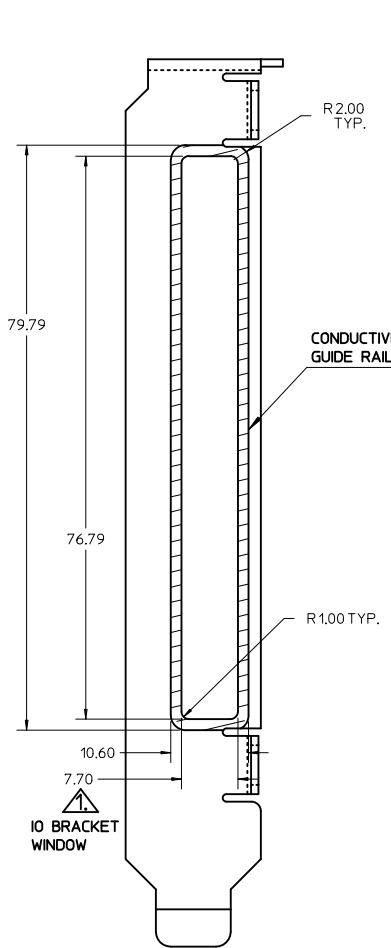
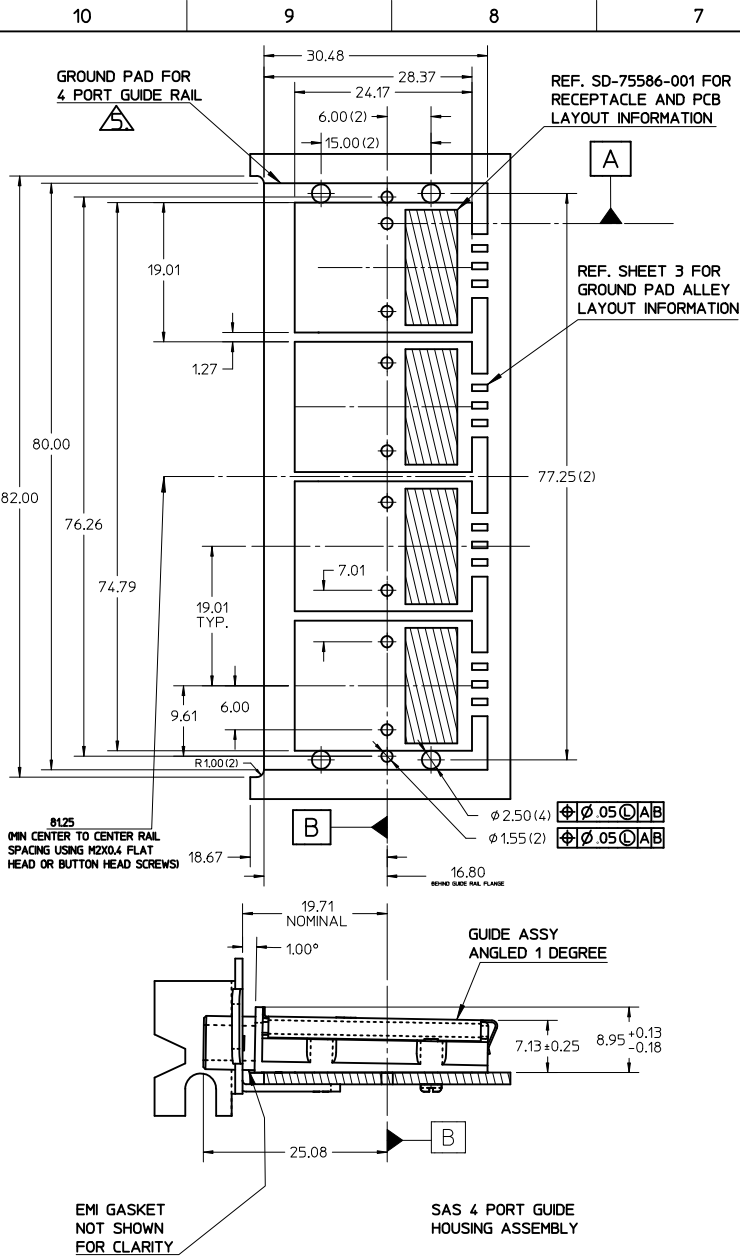
H
G
F
E
D
C
B
A

REV	DATE	DESCRIPTION
D	2018/12/24	1. REMASTERD FROM SD-111049-100 REV_C TO 1110490100 PSD ASY REV_D IN NX 2. SHEET 2 ADDED FOR FOR DATE CODE REPRESENTATION ON TOP VIEW. 3. SHEET 3 : D3: ADDED TOP VIEW FOR DATE CODE REPRESENTATION. 4. SHEET 4 : D2: ADDED TOP VIEW FOR DATE CODE REPRESENTATION. 5. SHEET 5 : ADDED REVISION HISTORY
D1	2020/04/27	OBSOLETED PART NUMBER 1110490111/12/14/15/17/18/19

THIS DRAWING CONTAINS INFORMATION THAT IS PROPRIETARY TO MOLEX ELECTRONIC TECHNOLOGIES, LLC AND SHOULD NOT BE USED WITHOUT WRITTEN PERMISSION

DIMENSION UNITS		SCALE	CURRENT REV DESC: OBSOLETED PART NUMBER		molex			
mm		1:1						
GENERAL TOLERANCES (UNLESS SPECIFIED)					IPASS SAS 2.0 26CKT GUIDE HOUSING ASSEMBLY 1 DEGREE, MULTIPORT			
ANGULAR TOL ± °			EC NO: 638770		PRODUCT CUSTOMER DRAWING			
4 PLACES ±			DRWN: VLOKESHA 2020/04/27		DOCUMENT NUMBER			
3 PLACES ±			CHK'D: GGA 2020/07/21		1110490100			
2 PLACES ±			APPR: GGA 2020/07/21		DOC TYPE		DOC PART	
1 PLACE ±			INITIAL REVISION:		PSD		ASY	
0 PLACES ±			DRWN: NMUTHARAYAPP 2018/12/24		CUSTOMER		D1	
			APPR: RCHEN08 2019/01/15		MATERIAL NUMBER		SHEET NUMBER	
DRAFT WHERE APPLICABLE MUST REMAIN WITHIN DIMENSIONS			THIRD ANGLE PROJECTION		SEE CHART		5 OF 5	
			DRAWING		SERIES			
			C-SIZE		111049			

DOCUMENT STATUS	P1	RELEASE DATE	2020/07/21	04:44:26
-----------------	----	--------------	------------	----------

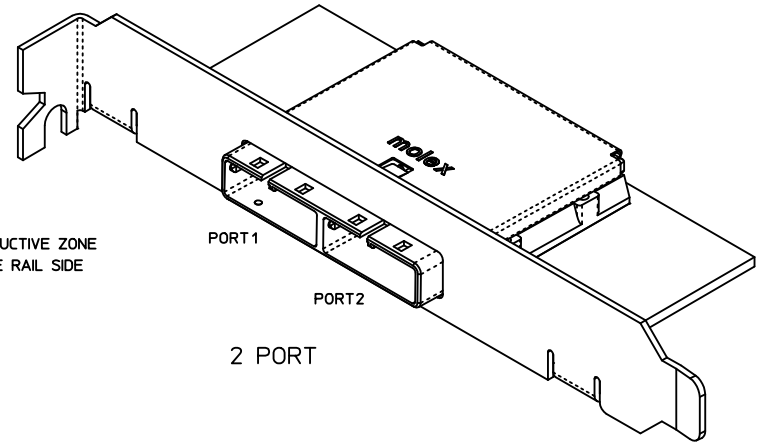
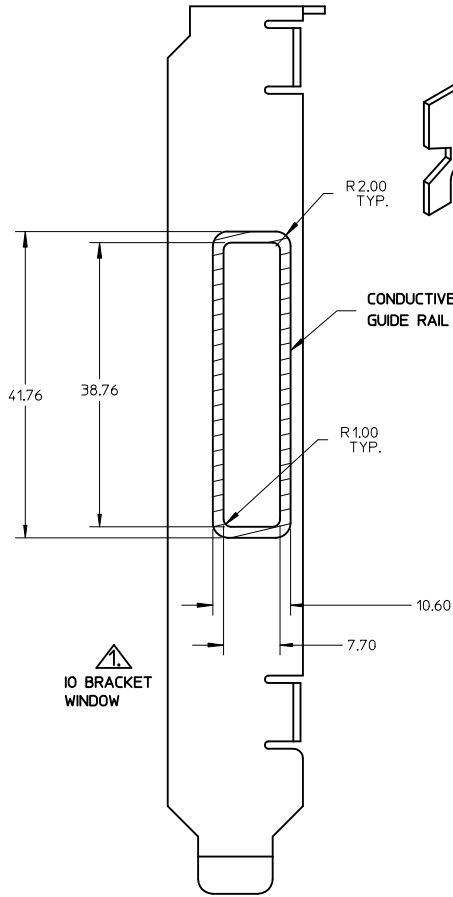
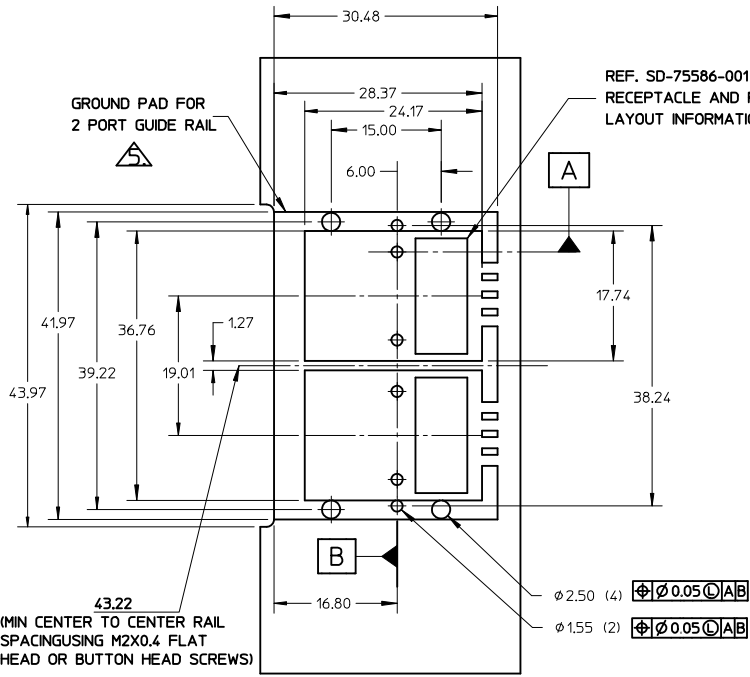


SAS 2.0 KEYWAY IN KEY #3 POSITION

- NOTES:
- REF. PCI EXPRESS CARD ELECTROMECHANICAL SPECIFICATION, REV 1.0a FOR BRACKET WINDOW LOCATION.
 - PCB AND BRACKET SHOWN FOR REFERENCE ONLY.
 - REF. SD-111048-100 FOR KEY POSITIONS
 - GUIDE HOUSING MOUNTING THREAD=M2 X 0.40, SEE SHEET 3 FOR SCREW LENGTH + TORQUE SPEC.
 - PLATE GROUND PAD WITH EMERSON SILVER OR GOLD.
 - MATERIAL:
GUIDE HOUSING - ZINC DIECAST, NICKEL PLATED
COVER - STAINLESS STEEL
 - THIS PRODUCT MEETS THE RESTRICTION OF HAZARDOUS SUBSTANCES IN ELECTRICAL AND ELECTRONIC EQUIPMENT (RoHS) DIRECTIVE (2002/95/EC)
 - GUIDE HOUSING PEGS FOR ALIGNMENT ONLY, DO NOT SOLDER.

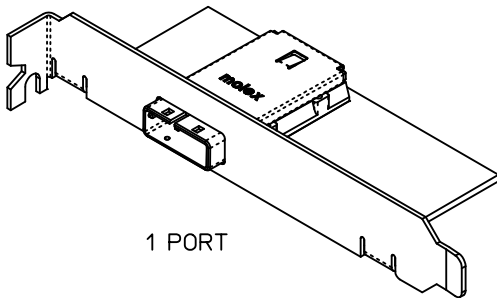
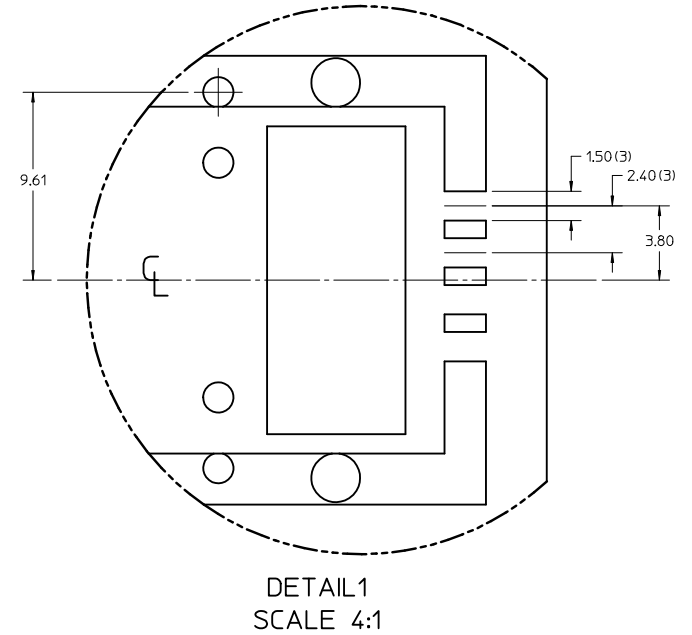
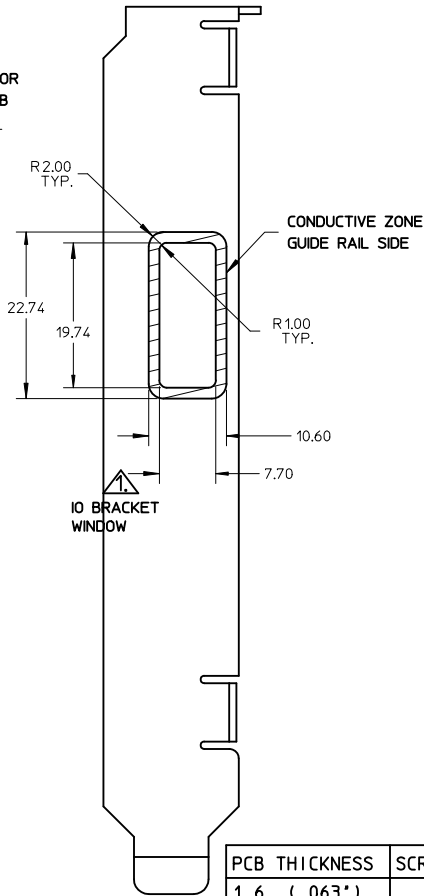
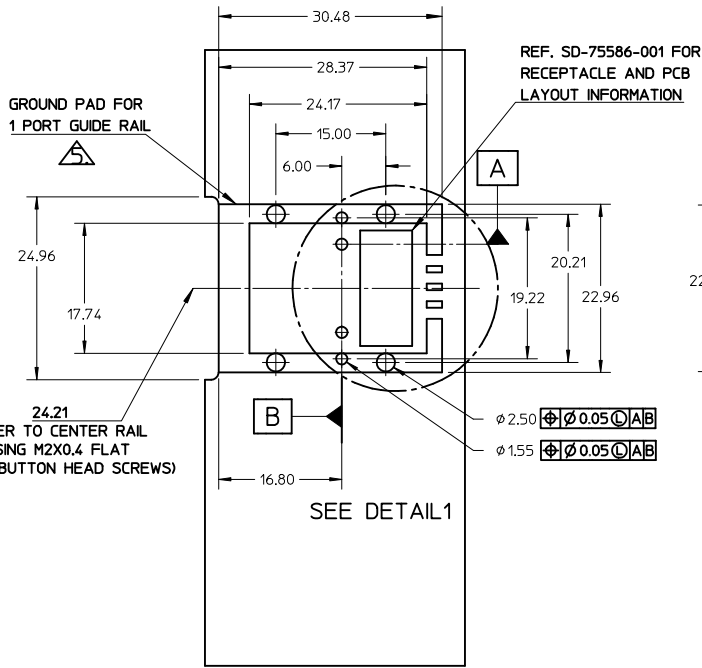
PART NUMBER	PORT SIZE	KEY(S) PORT1	KEY(S) PORT2	KEY(S) PORT3	KEY(S) PORT4	IDENTIFIERS
1110490117	4	2,4	2,4	2,4	2,4	SAS 2.0 OUT PORT/END DEVICE
1110490118	4	4,6	4,6	4,6	4,6	SAS 2.0 IN PORT/END DEVICE
1110490119	4	4	4	4	4	SAS 2.0 UNIVERSAL PORT

UPDATE TOLERANCE EC NO: USY2010-0481 DRWNR:SECRET 2010/01/21 CHKDR:SYTSMH 2010/01/21 APPR:DDOYE 2010/04/22	QUALITY SYMBOLS ▽=0 ▽=0	GENERAL TOLERANCES (UNLESS SPECIFIED) mm INCH 4 PLACES ± --- ± --- 3 PLACES ± --- ± --- 2 PLACES ± 0.13 ± --- 1 PLACE ± 0.25 ± --- ANGULAR ± 1°	DIMENSION STYLE MM ONLY DRAWN BY DATE BREED 2008/10/06 CHECKED BY DATE DDOYE 2008/10/06 APPROVED BY DATE DDOYE 2008/10/06	SCALE 1:1 DESIGN UNITS METRIC THIRD ANGLE PROJECTION	TITLE IPASS SAS 2.0 26CKT GUIDE HOUSING ASSEMBLY 1 DEGREE, MULTIPORT
	DRAFT WHERE APPLICABLE MUST REMAIN WITHIN DIMENSIONS	MATERIAL NO. SEE CHART	DOCUMENT NO. SD-111049-100	SHEET NO. 1 OF 3	
	MOLEX INCORPORATED				
	THIS DRAWING CONTAINS INFORMATION THAT IS PROPRIETARY TO MOLEX INCORPORATED AND SHOULD NOT BE USED WITHOUT WRITTEN PERMISSION				



PART NUMBER	PORT SIZE	KEY(S) PORT1	KEY(S) PORT2	IDENTIFIERS
1110490114	2	2.4	2.4	SAS 2.0 OUT PORT/END DEVICE
1110490115	2	4.6	4.6	SAS 2.0 IN PORT/END DEVICE
1110490116	2	4	4	SAS 2.0 UNIVERSAL PORT

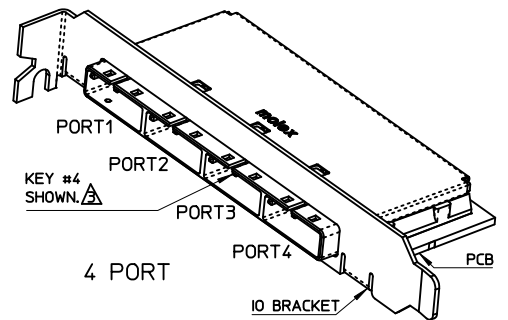
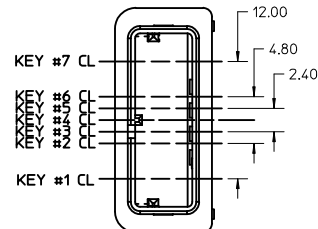
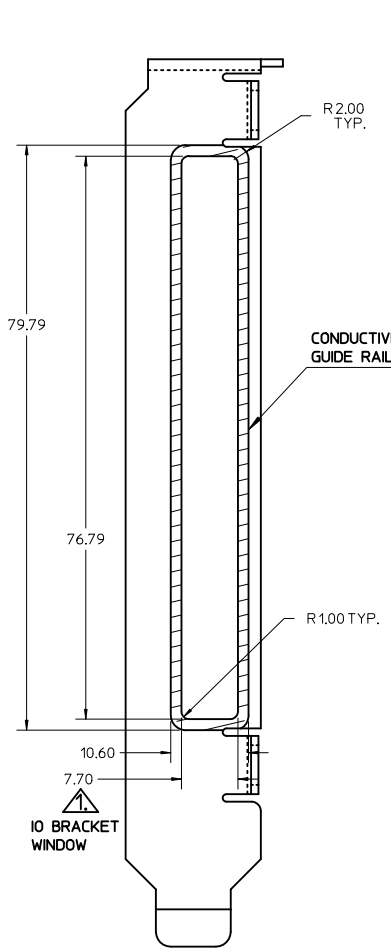
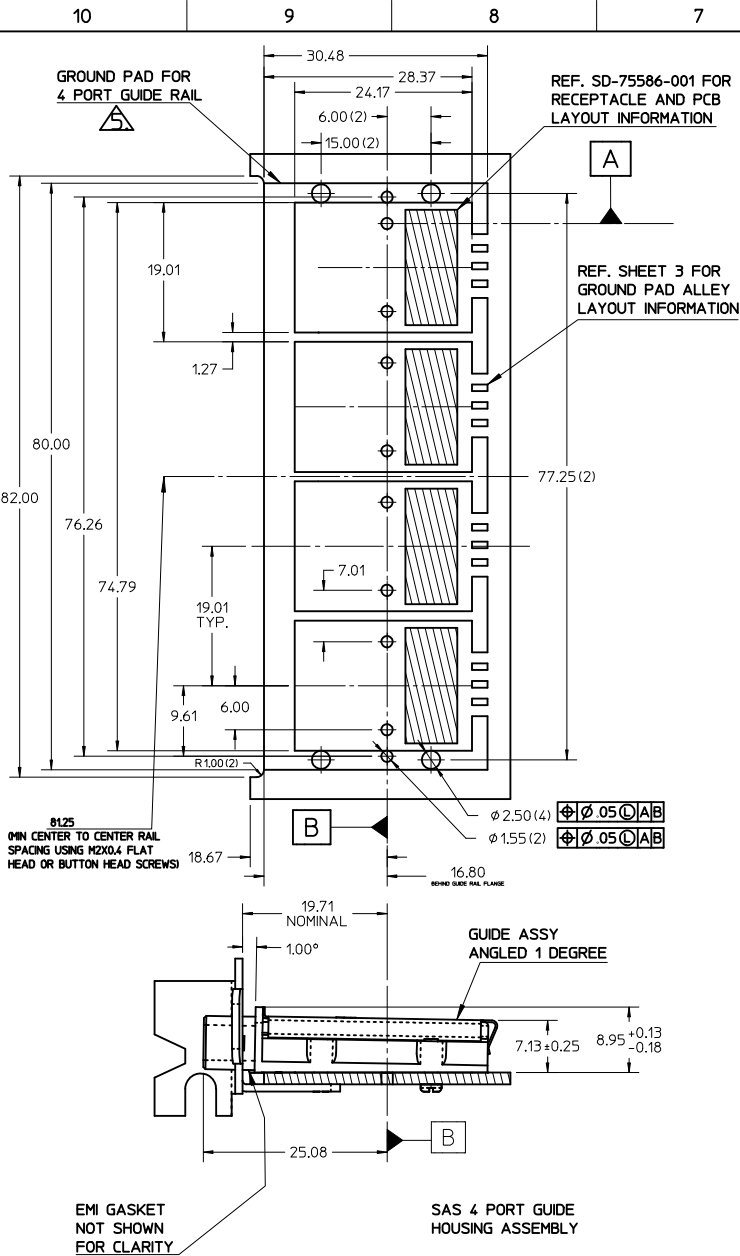
UPDATE TOLERANCE EC NO: USY2010-0481 DRWNR:SECRET 2010/01/21 CHKDR:PSYISMA 2010/01/21 APPR:DDOYE 2010/04/22	QUALITY SYMBOLS	GENERAL TOLERANCES (UNLESS SPECIFIED)	DIMENSION STYLE	SCALE	DESIGN UNITS	THIRD ANGLE PROJECTION
	$\nabla = 0$ $\nabla 7 = 0$	mm INCH 4 PLACES \pm --- \pm --- 3 PLACES \pm --- \pm --- 2 PLACES ± 0.13 \pm --- 1 PLACE ± 0.25 \pm --- ANGULAR $\pm 1^\circ$	MM ONLY	1:1	METRIC	
	DESCRIPTION	DRAFT WHERE APPLICABLE MUST REMAIN WITHIN DIMENSIONS	DRAWN BY DATE BREED 2008/10/06 CHECKED BY DATE DDOYE 2008/10/06 APPROVED BY DATE DDOYE 2008/10/06	TITLE	IPASS SAS 2.0 26CKT GUIDE HOUSING ASSEMBLY 1 DEGREE, MULTIPORT	
	REV		MATERIAL NO.	SEE CHART	DOCUMENT NO.	MOLEX INCORPORATED SD-111049-100
		SIZE	B	THIS DRAWING CONTAINS INFORMATION THAT IS PROPRIETARY TO MOLEX INCORPORATED AND SHOULD NOT BE USED WITHOUT WRITTEN PERMISSION		
						SHEET NO. 2 OF 3



PCB THICKNESS	SCREW LENGTH	TORQUE (IN LBS)
1.6 (.063')	5MM	2.3
2.38 (.093')	6MM	2.3
3.2 (.125')	6MM	2.3
X	+4MM MAX	2.3

PART NUMBER	PORT SIZE	KEY(S)	IDENTIFIERS
1110490111	1	2, 4	SAS 2.0 OUT PORT/END DEVICE
1110490112	1	4, 6	SAS 2.0 IN PORT/END DEVICE
1110490113	1	4	SAS 2.0 UNIVERSAL PORT

UPDATE TOLERANCE EC NO: USY2010-0481 DRWNR:SECRET 2010/01/21 CHKDR:PSYISMA 2010/01/21 APPR:DDOYE 2010/04/22	QUALITY SYMBOLS ▽=0 ▽=0	GENERAL TOLERANCES (UNLESS SPECIFIED) mm INCH 4 PLACES ± --- ± --- 3 PLACES ± --- ± --- 2 PLACES ± 0.13 ± --- 1 PLACE ± 0.25 ± --- ANGULAR ± 1°	DIMENSION STYLE MM ONLY DRAWN BY DATE BREED 2008/10/06 CHECKED BY DATE DDOYE 2008/10/06 APPROVED BY DATE DDOYE 2008/10/06	SCALE 1:1 DESIGN UNITS METRIC THIRD ANGLE PROJECTION
	DRAFT WHERE APPLICABLE MUST REMAIN WITHIN DIMENSIONS		MATERIAL NO. SEE CHART	TITLE IPASS SAS 2.0 26CKT GUIDE HOUSING ASSEMBLY 1 DEGREE, MULTIPORT MOLEX INCORPORATED
			DOCUMENT NO. SD-111049-100	SHEET NO. 3 OF 3
	THIS DRAWING CONTAINS INFORMATION THAT IS PROPRIETARY TO MOLEX INCORPORATED AND SHOULD NOT BE USED WITHOUT WRITTEN PERMISSION			

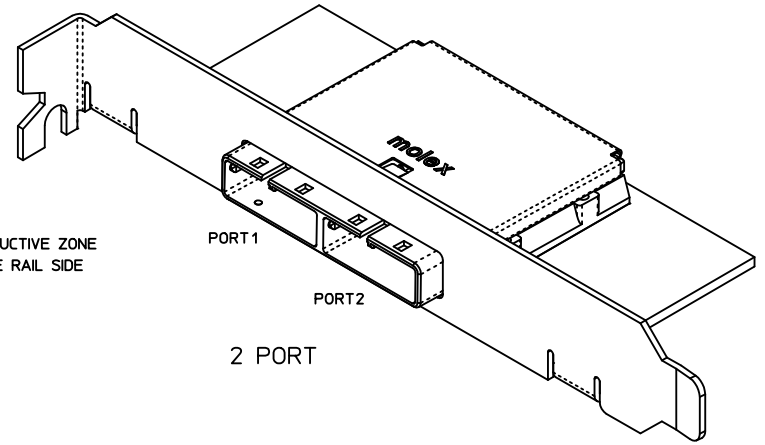
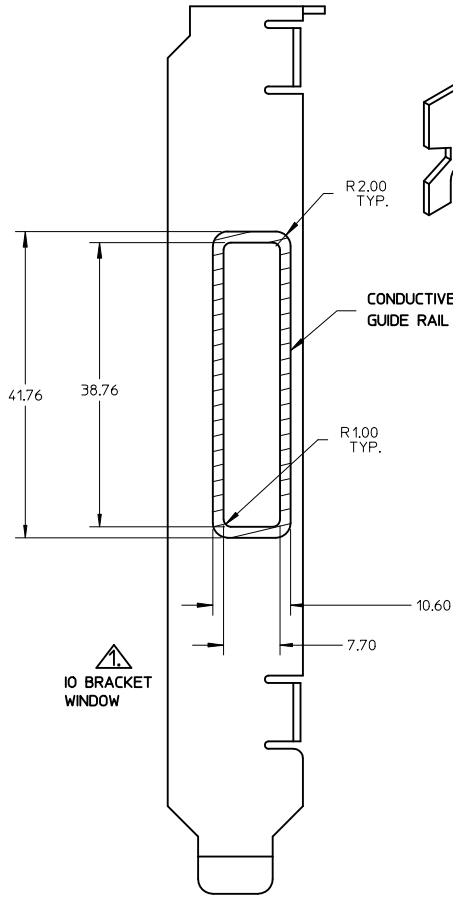
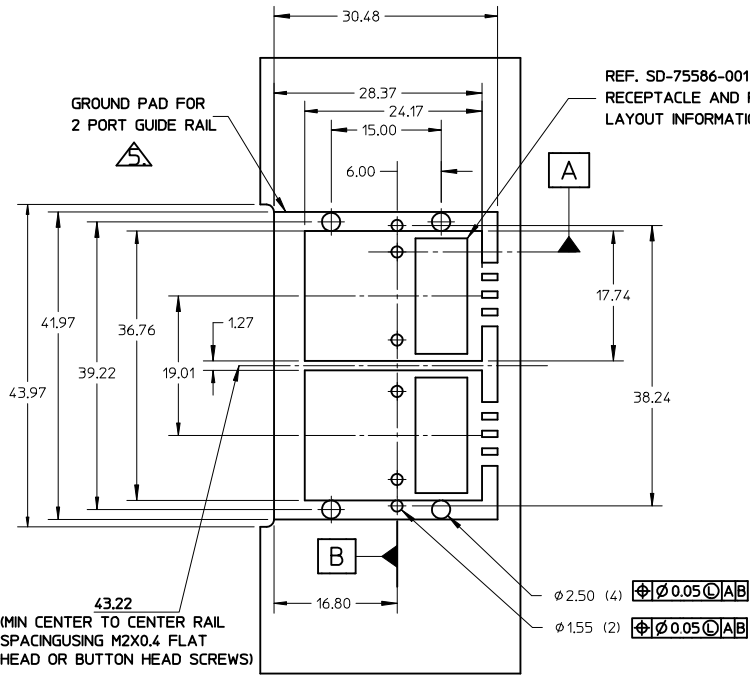


SAS 2.0 KEYWAY IN KEY #3 POSITION

- NOTES:
- REF. PCI EXPRESS CARD ELECTROMECHANICAL SPECIFICATION, REV 1.0a FOR BRACKET WINDOW LOCATION.
 - PCB AND BRACKET SHOWN FOR REFERENCE ONLY.
 - REF. SD-111048-100 FOR KEY POSITIONS
 - GUIDE HOUSING MOUNTING THREAD=M2 X 0.40, SEE SHEET 3 FOR SCREW LENGTH + TORQUE SPEC.
 - PLATE GROUND PAD WITH EMERSON SILVER OR GOLD.
 - MATERIAL:
GUIDE HOUSING - ZINC DIECAST, NICKEL PLATED
COVER - STAINLESS STEEL
 - THIS PRODUCT MEETS THE RESTRICTION OF HAZARDOUS SUBSTANCES IN ELECTRICAL AND ELECTRONIC EQUIPMENT (RoHS) DIRECTIVE (2002/95/EC)
 - GUIDE HOUSING PEGS FOR ALIGNMENT ONLY, DO NOT SOLDER.

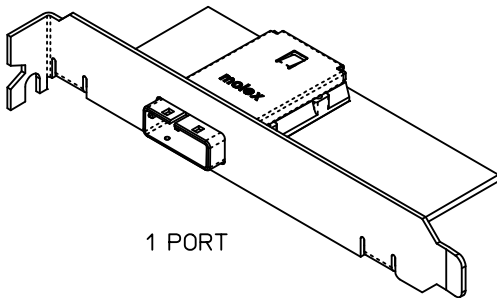
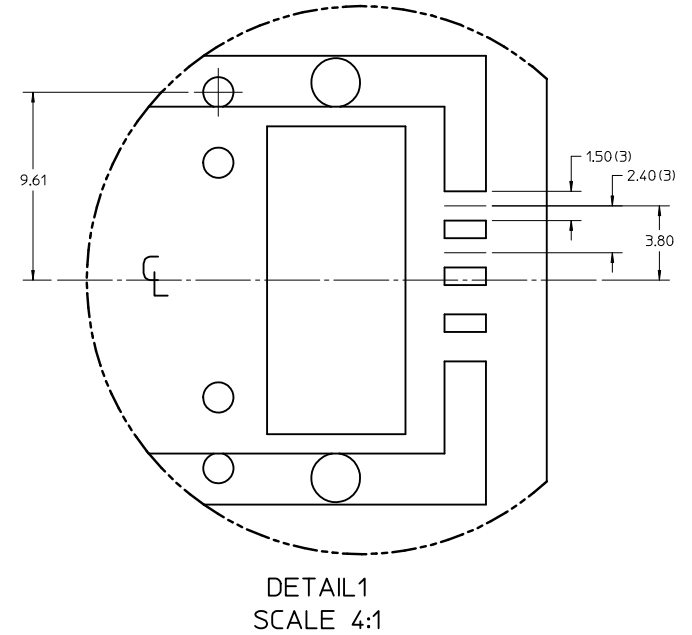
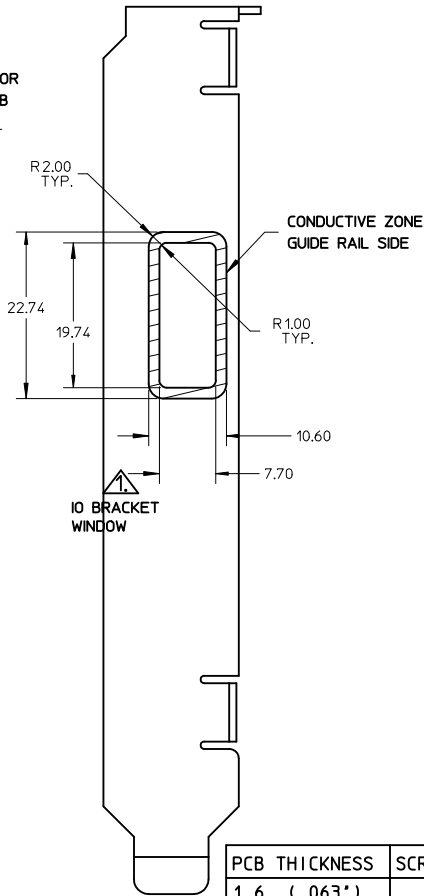
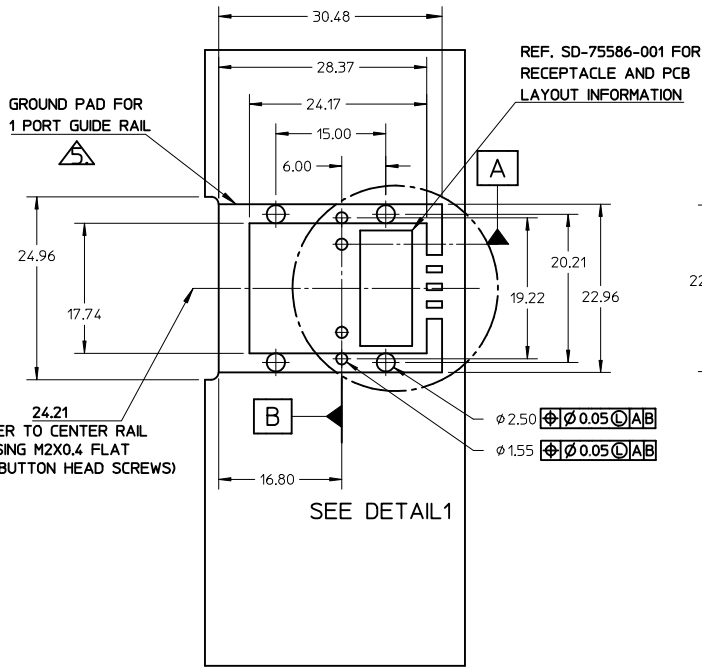
PART NUMBER	PORT SIZE	KEY(S) PORT1	KEY(S) PORT2	KEY(S) PORT3	KEY(S) PORT4	IDENTIFIERS
1110490117	4	2,4	2,4	2,4	2,4	SAS 2.0 OUT PORT/END DEVICE
1110490118	4	4,6	4,6	4,6	4,6	SAS 2.0 IN PORT/END DEVICE
1110490119	4	4	4	4	4	SAS 2.0 UNIVERSAL PORT

UPDATE TOLERANCE EC NO: USY2010-0481 DRWNR:SECRET 2010/01/21 CHKDR:SYTSMH 2010/01/21 APPR:DDOYE 2010/04/22	QUALITY SYMBOLS ▽=0 ▽=0	GENERAL TOLERANCES (UNLESS SPECIFIED) mm INCH 4 PLACES ± --- ± --- 3 PLACES ± --- ± --- 2 PLACES ± 0.13 ± --- 1 PLACE ± 0.25 ± --- ANGULAR ± 1°	DIMENSION STYLE MM ONLY DRAWN BY DATE BREED 2008/10/06 CHECKED BY DATE DDOYE 2008/10/06 APPROVED BY DATE DDOYE 2008/10/06	SCALE 1:1 DESIGN UNITS METRIC THIRD ANGLE PROJECTION	TITLE IPASS SAS 2.0 26CKT GUIDE HOUSING ASSEMBLY 1 DEGREE, MULTIPORT
	DRAFT WHERE APPLICABLE MUST REMAIN WITHIN DIMENSIONS	MATERIAL NO. SEE CHART	DOCUMENT NO. SD-111049-100	SHEET NO. 1 OF 3	
	THIS DRAWING CONTAINS INFORMATION THAT IS PROPRIETARY TO MOLEX INCORPORATED AND SHOULD NOT BE USED WITHOUT WRITTEN PERMISSION				
	MOLEX INCORPORATED				



PART NUMBER	PORT SIZE	KEY(S) PORT1	KEY(S) PORT2	IDENTIFIERS
1110490114	2	2.4	2.4	SAS 2.0 OUT PORT/END DEVICE
1110490115	2	4.6	4.6	SAS 2.0 IN PORT/END DEVICE
1110490116	2	4	4	SAS 2.0 UNIVERSAL PORT

UPDATE TOLERANCE EC NO: USY2010-0481 DRWNR:SECRET 2010/01/21 CHKDR:PSYISMA 2010/01/21 APPR:DDOYE 2010/04/22	DESCRIPTION REV	QUALITY SYMBOLS	GENERAL TOLERANCES (UNLESS SPECIFIED)	DIMENSION STYLE	SCALE	DESIGN UNITS	THIRD ANGLE PROJECTION	
		$\nabla = 0$ $\nabla 7 = 0$	mm INCH 4 PLACES \pm --- \pm --- 3 PLACES \pm --- \pm --- 2 PLACES ± 0.13 \pm --- 1 PLACE ± 0.25 \pm --- ANGULAR $\pm 1^\circ$	MM ONLY	1:1	METRIC	DRAWN BY DATE BREED 2008/10/06 CHECKED BY DATE DDOYE 2008/10/06 APPROVED BY DATE DDOYE 2008/10/06	TITLE
		DRAFT WHERE APPLICABLE MUST REMAIN WITHIN DIMENSIONS	SEE CHART	MATERIAL NO. MOLEX INCORPORATED	IPASS SAS 2.0 26CKT GUIDE HOUSING ASSEMBLY 1 DEGREE, MULTIPORT			
		SIZE B THIS DRAWING CONTAINS INFORMATION THAT IS PROPRIETARY TO MOLEX INCORPORATED AND SHOULD NOT BE USED WITHOUT WRITTEN PERMISSION	DOCUMENT NO. SD-111049-100	SHEET NO. 2 OF 3				



PCB THICKNESS	SCREW LENGTH	TORQUE (IN LBS)
1.6 (.063')	5MM	2.3
2.38 (.093')	6MM	2.3
3.2 (.125')	6MM	2.3
X	+4MM MAX	2.3

PART NUMBER	PORT SIZE	KEY(S)	IDENTIFIERS
1110490111	1	2, 4	SAS 2.0 OUT PORT/END DEVICE
1110490112	1	4, 6	SAS 2.0 IN PORT/END DEVICE
1110490113	1	4	SAS 2.0 UNIVERSAL PORT

UPDATE TOLERANCE EC NO: USY2010-0481 DRWNR:SECRET 2010/01/21 CHKD:PSYISMA 2010/01/21 APPR:DDOYE 2010/04/22	QUALITY SYMBOLS ▽=0 ▽7=0	GENERAL TOLERANCES (UNLESS SPECIFIED) mm INCH 4 PLACES ± --- ± --- 3 PLACES ± --- ± --- 2 PLACES ± 0.13 ± --- 1 PLACE ± 0.25 ± --- ANGULAR ± 1°	DIMENSION STYLE MM ONLY DRAWN BY DATE BREED 2008/10/06 CHECKED BY DATE DDOYE 2008/10/06 APPROVED BY DATE DDOYE 2008/10/06	SCALE 1:1 DESIGN UNITS METRIC THIRD ANGLE PROJECTION
	DRAFT WHERE APPLICABLE MUST REMAIN WITHIN DIMENSIONS		MATERIAL NO. SEE CHART	TITLE IPASS SAS 2.0 26CKT GUIDE HOUSING ASSEMBLY 1 DEGREE, MULTIPORT MOLEX INCORPORATED
	MOLEX INCORPORATED		DOCUMENT NO. SD-111049-100	SHEET NO. 3 OF 3
	THIS DRAWING CONTAINS INFORMATION THAT IS PROPRIETARY TO MOLEX INCORPORATED AND SHOULD NOT BE USED WITHOUT WRITTEN PERMISSION			