

MATERIAL AND FINISH:

Insulator: Polycarbonate, UL-94V-0 rated
Contacts: Brass

ELECTRICAL SPECIFICATIONS:

Current rating: 10 A/15 A
Voltage rating: 250 VAC
Insulation resistance: 100 Mohm min. at 500 VDC
Dielectric withstanding voltage: 2000 VAC for one minute

ORDERING CODE:

43R03-3
1 2 3 4

1) COLOR




- 1 = BLACK
- 2 = GRAY




2) TERMINAL OPTIONS

- 1 = .187(4.8) WITH Ø1.4
- 2 = .250(6.3) WITH Ø1.65

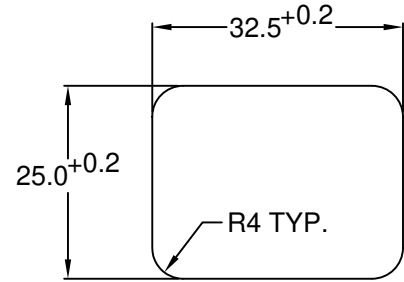
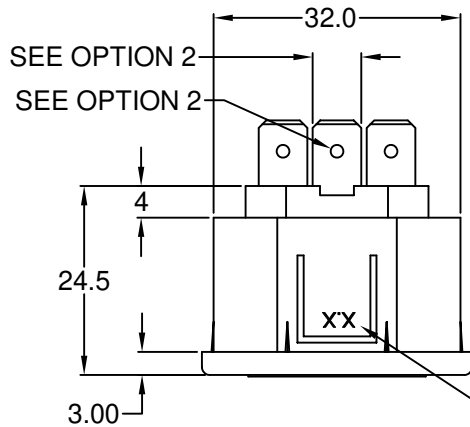
3) ELECTRICAL CIRCUIT CONFIGURATION

1 = 10A 250V 70°C 

15A 250V 70°C   

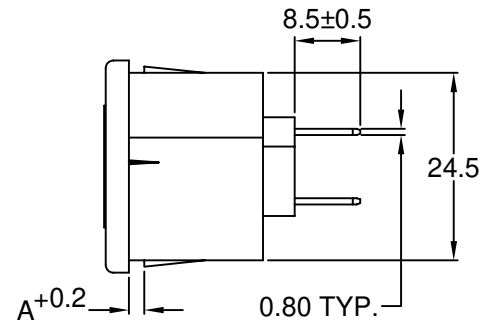
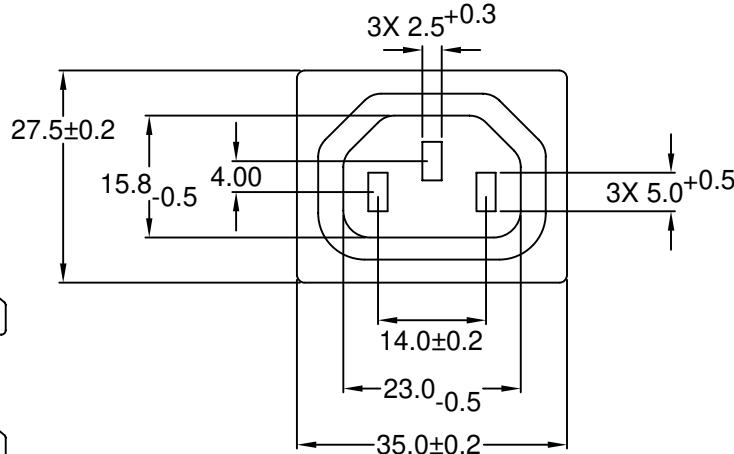
2 = 10A 250V 120°C   

4) PANEL THICKNESS



RECOMMENDED PANEL CUTOUT

REPLACE WITH CORRESPONDING PANEL THICKNESS



P/N	A	MAX. PANEL THICKNESS
43R03-3XXX-150	1.5	1.5
43R03-3XXX-200	2.0	2.0
43R03-3XXX-250	2.5	2.5

ADDITIONAL PANEL THICKNESS AVAILABLE ON REQUEST

REV	DATE	CHANGE	CHK	APPR
	A	10/8/04	ORDERING CODE #	PB

TOLERANCE UNLESS OTHERWISE SPECIFIED			
X	± 1		
X.X	± 0.4		
X.XX	± 0.20		
DRAWN BY	GQ	DATE:	10/05/01
CHECK BY	TD	DATE:	10/09/01
APPR BY	PB	DATE:	10/09/01

RoHS COMPLIANT

Power Dynamics, Inc.

Phone: 973 560-0019 Whippany, New Jersey Fax: 973 560-0076

PART: 10A/15A IEC 60320 APPL. OUTLET; QC TERMINALS; SNAP-IN, PANEL MOUNT

PART #: 43R03-3XXX-XXX		SHEET 1 of 1
SIZE: A	ALL DIMENSIONS FOR REFERENCE ONLY DIMENSIONS ARE IN MILLIMETERS	REV: A
SCALE: NTS		