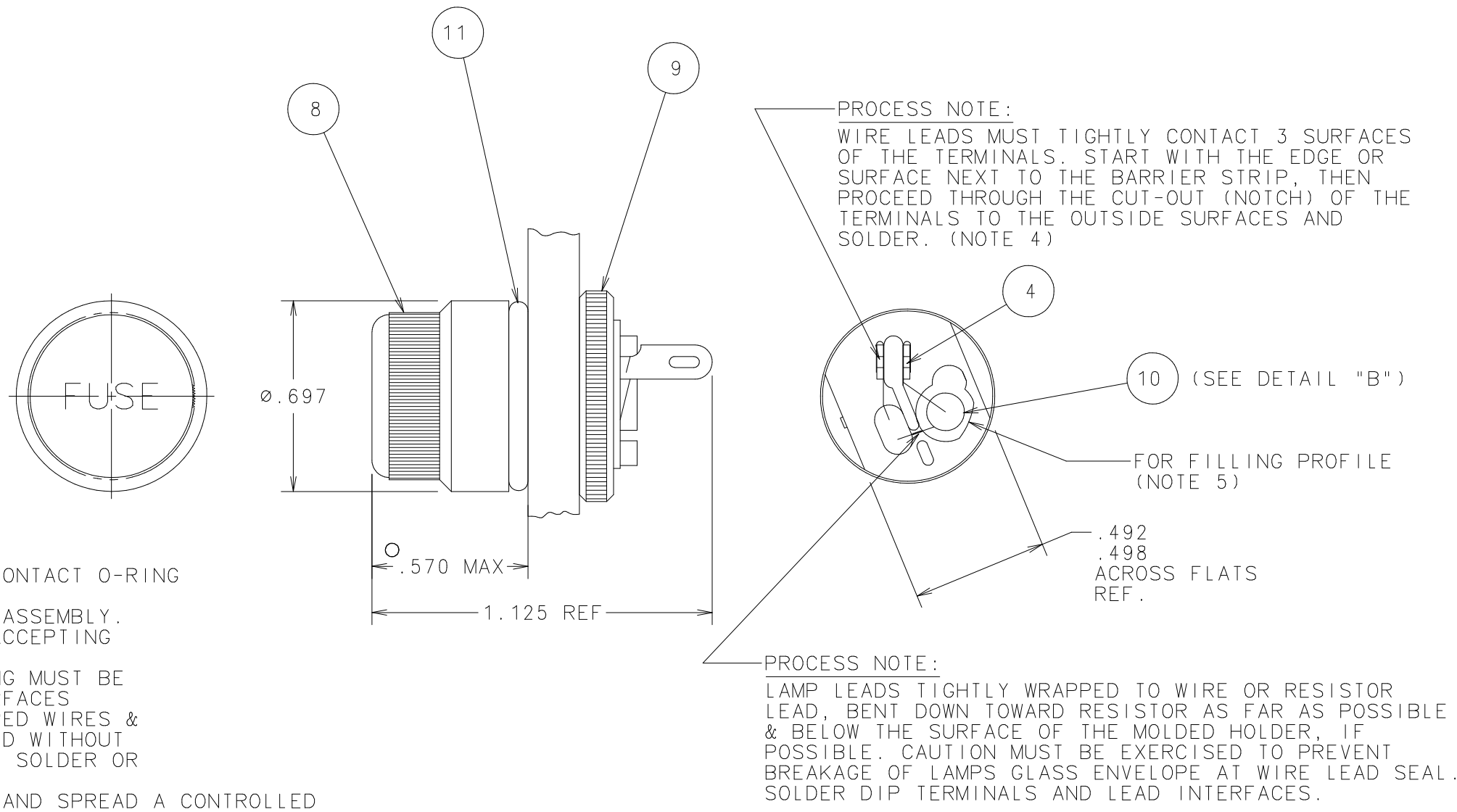
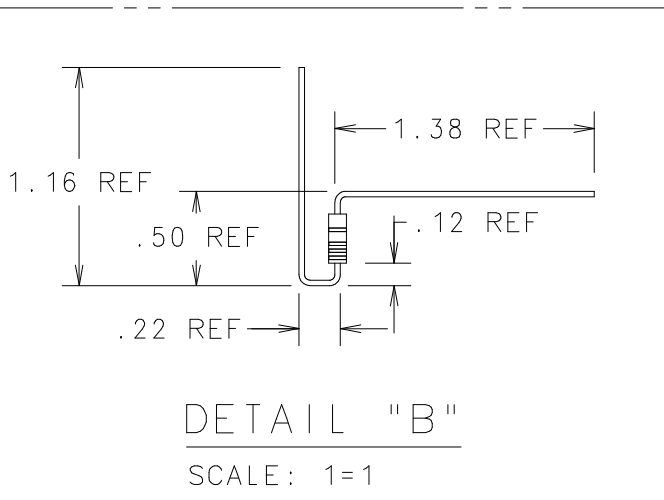
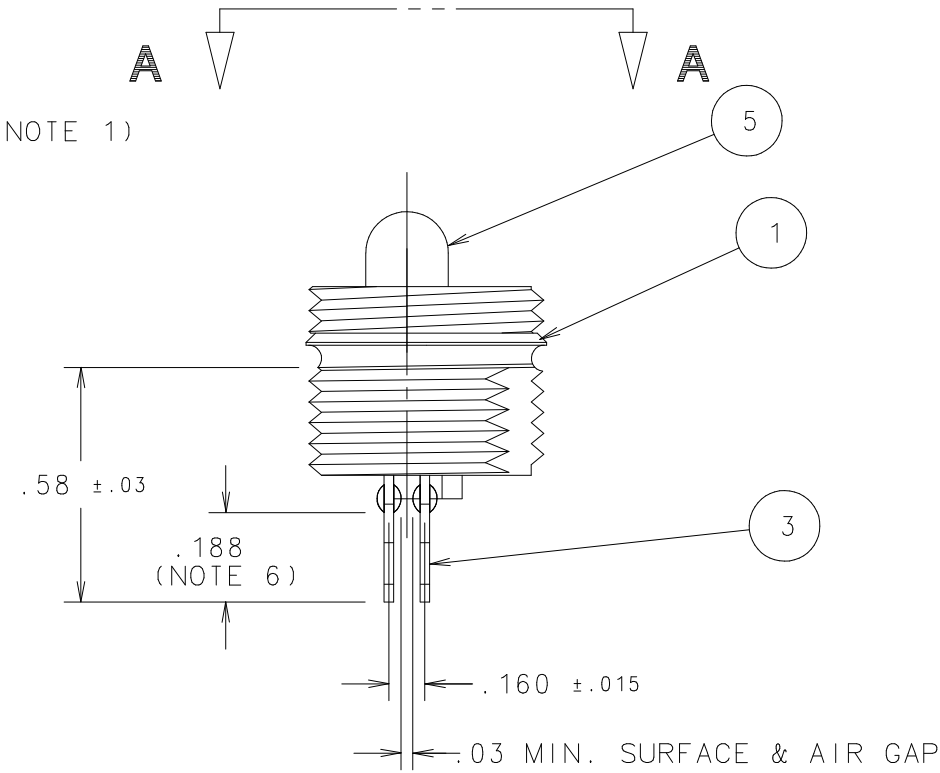
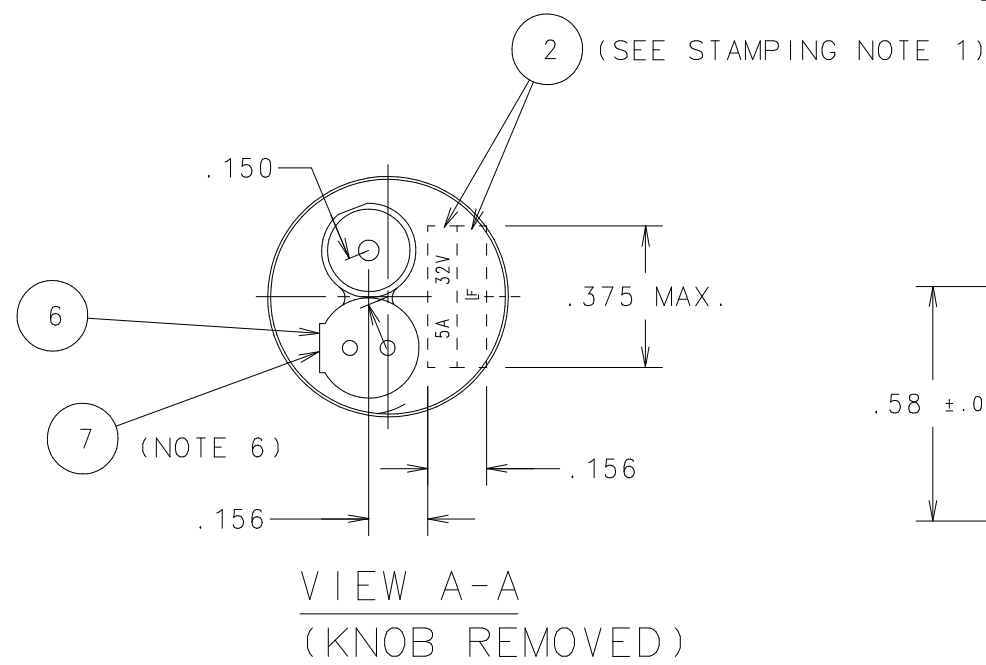


STAMPING NOTE:  
 1. INK PRINT: 1/16" CHARACTERS FOR TWO LINE STAMPING &  
 5/64" FOR ONE LINE. "LF" TRADEMARK TO HAVE  
 1/16" CLEARANCE BETWEEN LETTERS. SEE CHART  
 FOR DETAILS.



- NOTES:
- WHEN KNOB IS HAND TIGHTENED IT MUST CONTACT O-RING TO PROVIDE A DRIPPROOF SEAL.
  - LAMP TEST MUST BE PERFORMED FOR EACH ASSEMBLY.
  - FINAL ASSEMBLIES MUST BE CAPABLE OF ACCEPTING A L/F MICROFUSE.
  - EXCESS FLUX & RESIDUE FROM SOLDERING MUST BE REMOVED FROM THE TERMINALS & BODY SURFACES BETWEEN & AROUND THE TERMINALS. WRAPPED WIRES & TERMINALS TO BE FULLY WETTED & COVERED WITHOUT EVIDENCE OF COLD SOLDERING, EXCESSIVE SOLDER OR EXCESSIVE HEAT.
  - AFTER DISK IS PRESSED IN BODY, APPLY AND SPREAD A CONTROLLED AMOUNT OF ADHESIVE WITH A SYRINGE AROUND THE PERIMETER OF THE DISK AND BODY JOINT. AFTER GLUEING, THE ASSEMBLY CAN NOT BE SUBMERSED IN CLEANING SOLUTIONS. NO ADHESIVE ALLOWED IN THE FUSE TERMINAL HOLES.
  - THERE MUST NOT BE EXCESS SOLDER BUILD-UP FOR THIS DISTANCE: TERMINAL THICKNESS PLUS SOLDER MUST NOT EXCEED .035 TOTAL THICKNESS.

PACKAGING NOTE:  
 1. PLACE ASSEMBLED FUSEHOLDERS (150 PIECES MAX) INTO CARTON 580509 LINED WITH BAG 890-620, CLOSE & SEAL WITH TAPE 088120. AFFIX LABEL 914-796 PRINTED TO GENERAL LABEL SPECIFICATION LS-000003. FOR SMALLER QUANTITIES, USE THE SAME PACKING MATERIALS AND ADD BROWN PAPER TO FILL THE EMPTY SPACE IN THE CARTON.

LTR	DATE	REVISION	CHK	APD
K	10/25/02	82332C- REVISED & REDRAWN ON NEW FORMAT JMB		
L	03/07/07	85292B-CHG 692227 TO 692469	PJM	

NO	COMPONENT NO	DESCRIPTION	QTY/M	U/M
--	914-796	LABEL	6.700	EAD
--	580509	CARTON	6.700	EAD
--	580278	PARTITION	20.100	EAD
--	580219	FOAM	6.700	EAD
11	901-104	O-RING	1000	EA
10	899-045	RESISTOR	1000	EA
9	903-067	NUT	1000	EA
8	284000-4	KNOB	1000	EA
7	087232	ADHESIVE	.27	LB
6	281002-4	ORIENTATION DISC	1000	EA
5	915-008	LAMP	1000	EA
4	692469	SOLDER (TIN DIP)	.20	LB
3	281002-3	TERMINAL	2000	EA
2	425502	INK	.016	FOZ
1	284000-1	BODY	1000	EA

**BILL OF MATERIAL**

UNLESS OTHERWISE SPECIFIED, DIMENSIONS DO NOT INCLUDE PLATING.

○ DENOTES CRITICAL CHARACTERISTICS.  
 CPK DENOTES CPK DIMENSIONS, -MINIMUM CPK VALUE  
 (ST) DENOTES A CHARACTERISTIC THAT PROVIDES AN INDICATION OF PROCESS PERFORMANCE. PROCEDURE FOR MEASUREMENT AND TRACKING TO BE DEFINED IN LITTELFUSE INSPECTION INSTRUCTIONS.  
 CP DENOTES CP DIMENSIONS, -MINIMUM CP VALUE MUST BE WITHIN THE DIMENSIONAL LIMITATIONS SHOWN ON DRAWING AND INITIALLY LOCATED TO ALLOW FOR MAXIMUM TOOL LIFE.

COPIES TO		MATERIAL SPEC		
1	9 18			
2	10 19	FINISH		
3	12 20			
4	13 21	DRW	JMB	DATE 10/25/02 SCALE 2=1
5	14 23	CHK		DATE SUPER DR
6	15 33	APPD		DATE RAW STK WT
7	16 43			
8	17 53	LBS/M		

TOLERANCE UNLESS OTHERWISE SPECIFIED  
 TWO PLACE DEC ±.01 FRACTION ±  
 THREE PLACE DEC ±.005 ANGULAR ±1°

TITLE INDICATING MICRO-FUSE HOLDER 32V. WITH STRAIGHT TERMINALS

	REVISION	DRWG. NO.	FINAL
	L	02800004Z	

DES PLAINES, ILLINOIS 60016

CAD GENERATED DRAWING - NO PENCIL CHANGES ALLOWED