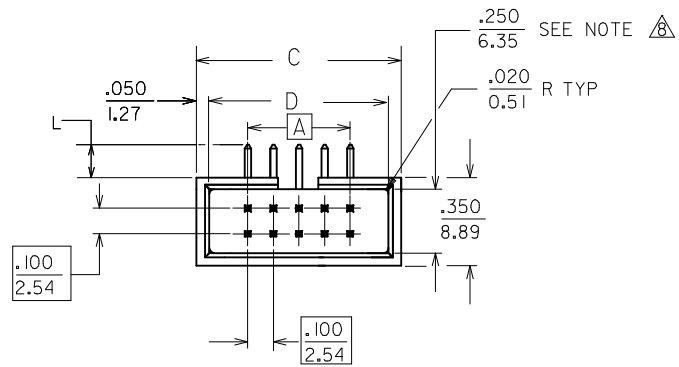
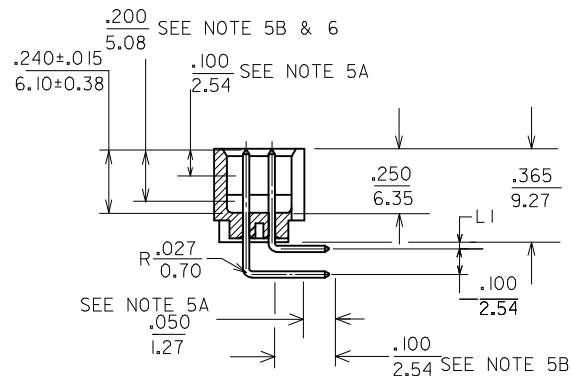
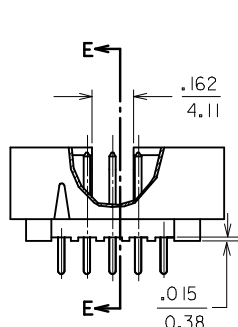
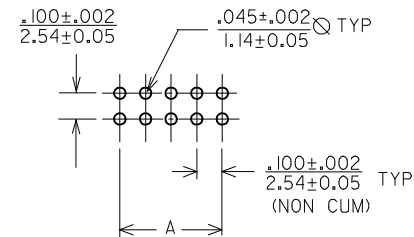


ASSEMBLY PART NO.	CKT SIZE	A	B	C	D	L	LI
70247-0869	08	.300/7.62	.580/14.73	.700/17.78	.600/15.24	.120/3.05	0
70247-3469	34	1.600/40.64	1.880/47.76	2.000/50.80	1.900/48.26	.120/3.05	0
70247-5069	50	2.400/60.96	2.680/68.07	2.800/71.12	2.700/68.58	.120/3.05	0



RECOMMENDED P.C. BOARD HOLE LAYOUT



SECTION E-E

NOTES:

- PIN PUSHOUT FORCE (.9072KG)/2LBS MIN.
- PIN SOLDERABILITY PER MOLEX SPEC. ES-152
- PRODUCT SPEC: PS-70246 APPLIES.
- WAFER TO BE FLAT WITHIN (0.03MM/CM) 0.003IN/IN
- DIMENSIONS FOR PLATING LOCATION : A-MEASURE POINT FOR THICKNESS. B-MINIMUM COVERAGE
- GOLD END OF PIN UNLESS OVERALL PLATED.
- PLATING : - 15µin MIN AU & 75µin MIN TIN IN SELECTED AREAS. WITH 50µin MIN NICKEL UNDERPLATE OVERALL.

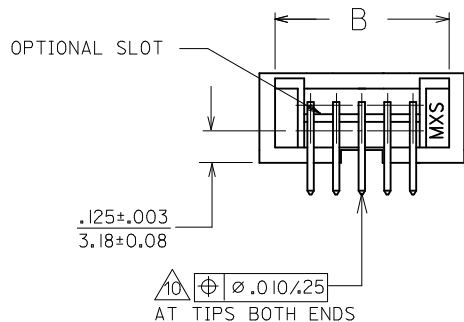
10. DIMENSION AT UPPER CENTER OF THE SHROUDED WALL CAN BE (5.81)/.228.

9. MATERIAL:

PINS: .025 SQ. 260 BRASS OR EQUIVALENT.

WAFER: PBT, GLASS FILLED, UL94V-0, COLOUR: BLACK.

10. SOLDER TAIL POSITION TOLERANCE TO BE GAUGED.



ADD NOTE 10. EC NO: S2009-0830 DRWN:SKANG CHKD:ATSEE APPR:MLONG 2009/09/28 2009/09/30 2009/10/02	QUALITY SYMBOLS	GENERAL TOLERANCES (UNLESS SPECIFIED)	DIMENSION STYLE	SCALE	DESIGN UNITS	THIRD ANGLE PROJECTION																		
	$\nabla=0$ $\sphericalangle=0$	<table border="1"> <thead> <tr> <th></th> <th>mm</th> <th>INCH</th> </tr> </thead> <tbody> <tr> <td>4 PLACES</td> <td>± ---</td> <td>± ---</td> </tr> <tr> <td>3 PLACES</td> <td>± ---</td> <td>± .008</td> </tr> <tr> <td>2 PLACES</td> <td>± 0.20</td> <td>± ---</td> </tr> <tr> <td>1 PLACE</td> <td>± ---</td> <td>± ---</td> </tr> </tbody> </table>		mm	INCH	4 PLACES	± ---	± ---	3 PLACES	± ---	± .008	2 PLACES	± 0.20	± ---	1 PLACE	± ---	± ---	IN/MM	NTS	METRIC				
		mm	INCH																					
	4 PLACES	± ---	± ---																					
3 PLACES	± ---	± .008																						
2 PLACES	± 0.20	± ---																						
1 PLACE	± ---	± ---																						
DESCRIPTION	<table border="1"> <thead> <tr> <th></th> <th>mm</th> <th>INCH</th> </tr> </thead> <tbody> <tr> <td>ANGULAR</td> <td>± 3 °</td> <td></td> </tr> </tbody> </table>		mm	INCH	ANGULAR	± 3 °		<table border="1"> <thead> <tr> <th>DRAWN BY</th> <th>DATE</th> <th>TITLE</th> </tr> </thead> <tbody> <tr> <td>JWAN</td> <td>1991/10/17</td> <td rowspan="2">C-GRID, SHROUDED HEADER R/A (SLOTTED W/O STANDOFFS)</td> </tr> <tr> <td>TAY</td> <td>1991/10/22</td> </tr> <tr> <td>APPROVED BY</td> <td>DATE</td> <td rowspan="2">MOLEX MOLEX INCORPORATED</td> </tr> <tr> <td>RWONG</td> <td>1991/10/22</td> </tr> </tbody> </table>	DRAWN BY	DATE	TITLE	JWAN	1991/10/17	C-GRID, SHROUDED HEADER R/A (SLOTTED W/O STANDOFFS)	TAY	1991/10/22	APPROVED BY	DATE	MOLEX MOLEX INCORPORATED	RWONG	1991/10/22			
	mm	INCH																						
ANGULAR	± 3 °																							
DRAWN BY	DATE	TITLE																						
JWAN	1991/10/17	C-GRID, SHROUDED HEADER R/A (SLOTTED W/O STANDOFFS)																						
TAY	1991/10/22																							
APPROVED BY	DATE	MOLEX MOLEX INCORPORATED																						
RWONG	1991/10/22																							
D1	REV	DRAFT WHERE APPLICABLE MUST REMAIN WITHIN DIMENSIONS	<table border="1"> <thead> <tr> <th>MATERIAL NO.</th> <th>DOCUMENT NO.</th> <th>SHEET NO.</th> </tr> </thead> <tbody> <tr> <td>SEE TABLE</td> <td>SD-70247-**-59</td> <td>1 OF 1</td> </tr> </tbody> </table>	MATERIAL NO.	DOCUMENT NO.	SHEET NO.	SEE TABLE	SD-70247-**-59	1 OF 1															
MATERIAL NO.	DOCUMENT NO.	SHEET NO.																						
SEE TABLE	SD-70247-**-59	1 OF 1																						