

**MATERIALS AND FINISHES**

**BODY: ZINC ALLOY  
PLATED NICKEL (70 μ-in MIN)**

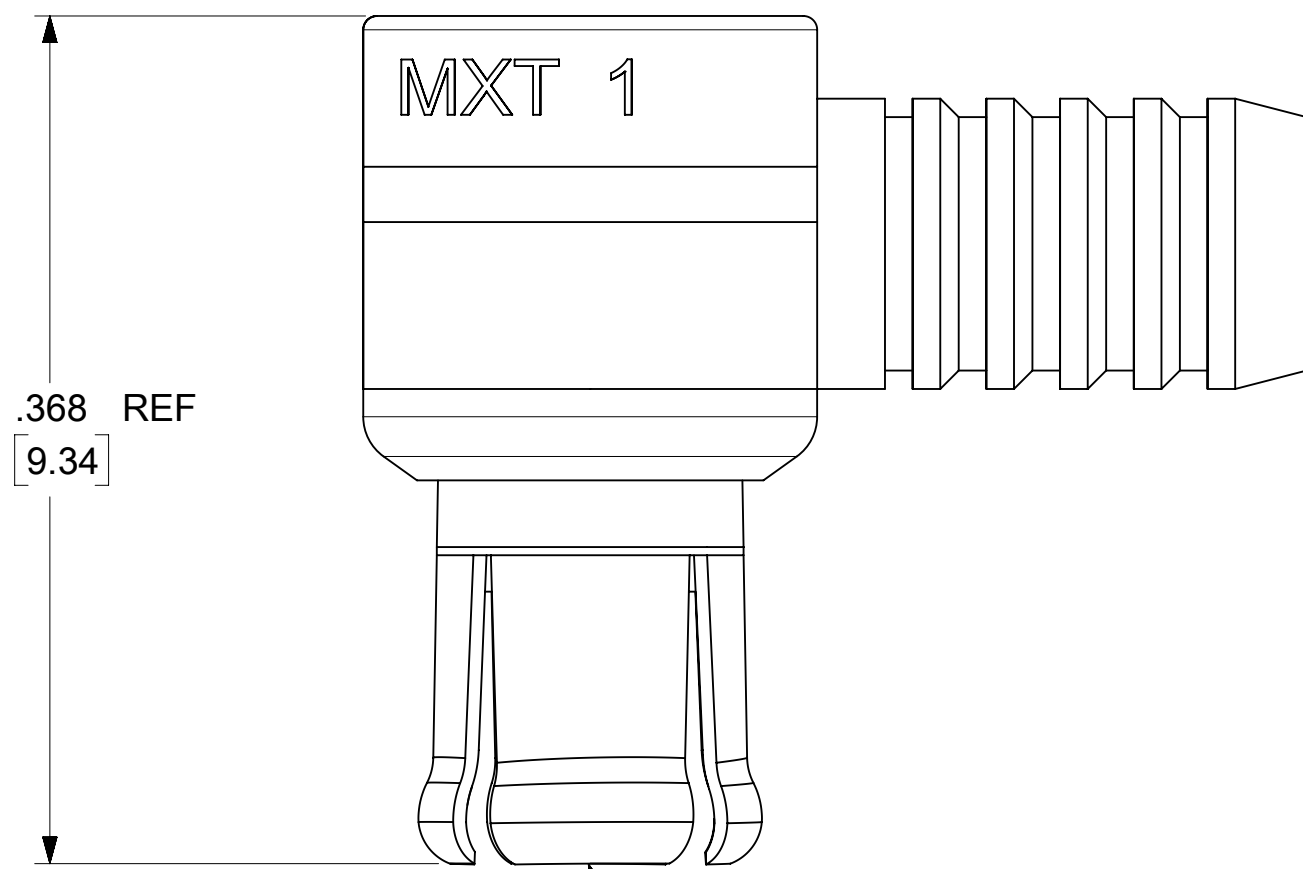
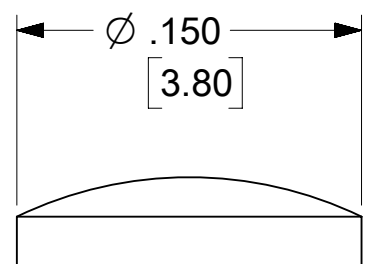
**CENTER CONTACT: BRASS  
PLATED GOLD (10 μ-in MIN)**

**INSULATOR: PTFE**

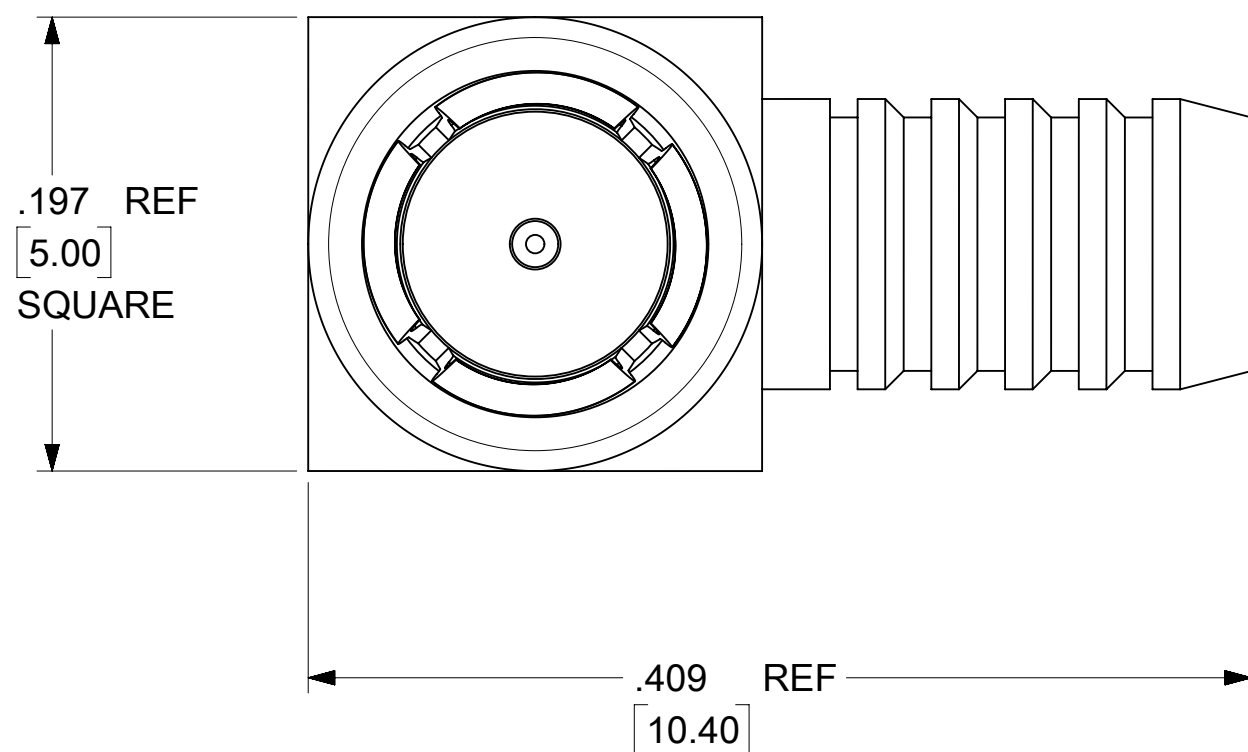
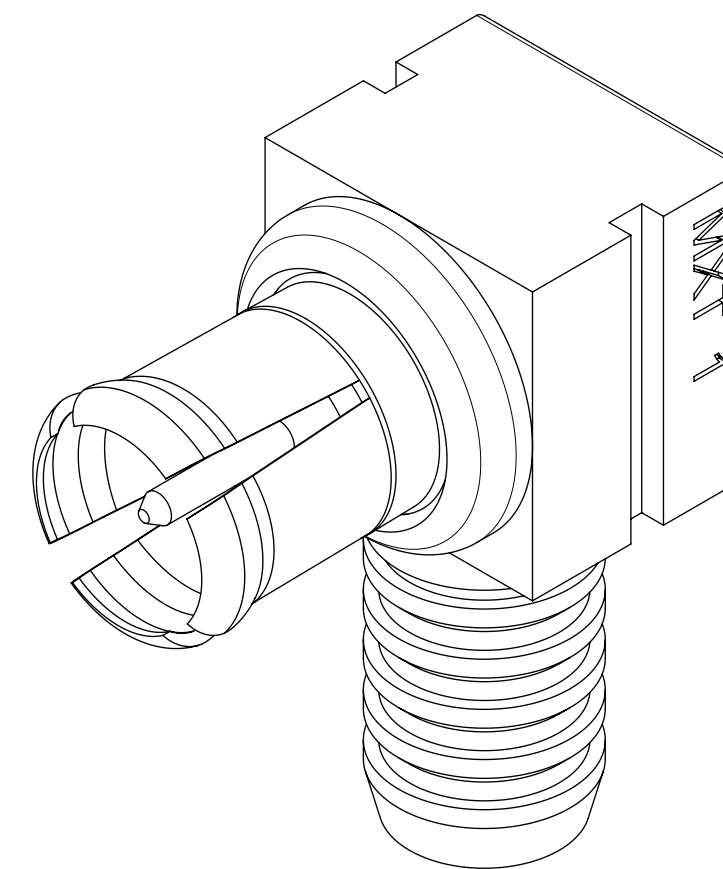
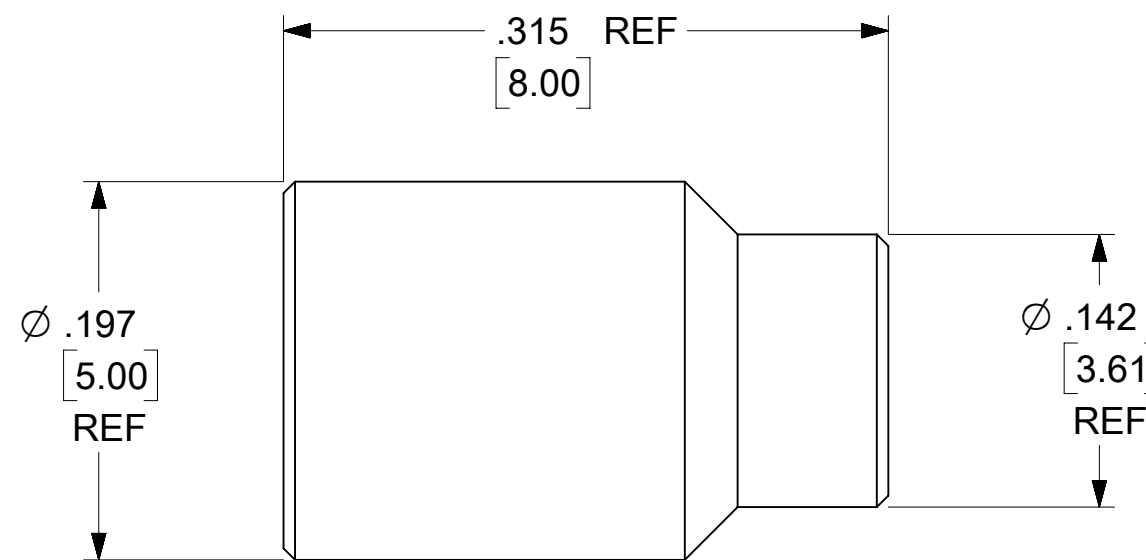
**OUTER CONTACT: BERYLLIUM COPPER  
PLATED GOLD (10 μ-in MIN)**

**CRIMP TUBE: BRASS  
PLATED NICKEL (70 μ-in MIN)**

**CAP: STAINLESS STEEL  
PASSIVATED**



MCX PLUG  
75 OHM  
INTERFACE



**PART # 73415-5190**

SEE SHEET 2 FOR ASSEMBLY INSTRUCTIONS

SYMBOLS										THIS DRAWING CONTAINS INFORMATION THAT IS PROPRIETARY TO MOLEX ELECTRONIC TECHNOLOGIES, LLC AND SHOULD NOT BE USED WITHOUT WRITTEN PERMISSION														
DIMENSION UNITS					SCALE					CURRENT REV DESC:														
IN/MM					NTS					EC NO: 628146 DRWN: LMEIER 2019/11/20 CHK'D: SSSHAH 2019/12/02 APPR: AROBERTSON 2019/12/02 INITIAL REVISION: DRWN: TEF 2004/10/27 APPR: JDW 2004/10/27														
GENERAL TOLERANCES (UNLESS SPECIFIED)																								
					MM															INCH				
4 PLACES ±																								
3 PLACES ±																				± 0.005				
2 PLACES ±					0.13															± 0.01				
1 PLACE ±					0.25					±														
0 PLACES ±										±														
ANGULAR TOL ± 2.0°										THIRD ANGLE PROJECTION														
DRAFT WHERE APPLICABLE MUST REMAIN WITHIN DIMENSIONS										DRAWING		SERIES		MATERIAL NUMBER		CUSTOMER		SHEET NUMBER						
C-SIZE		73415		734155190		PSD		001		A1		1 OF 2												

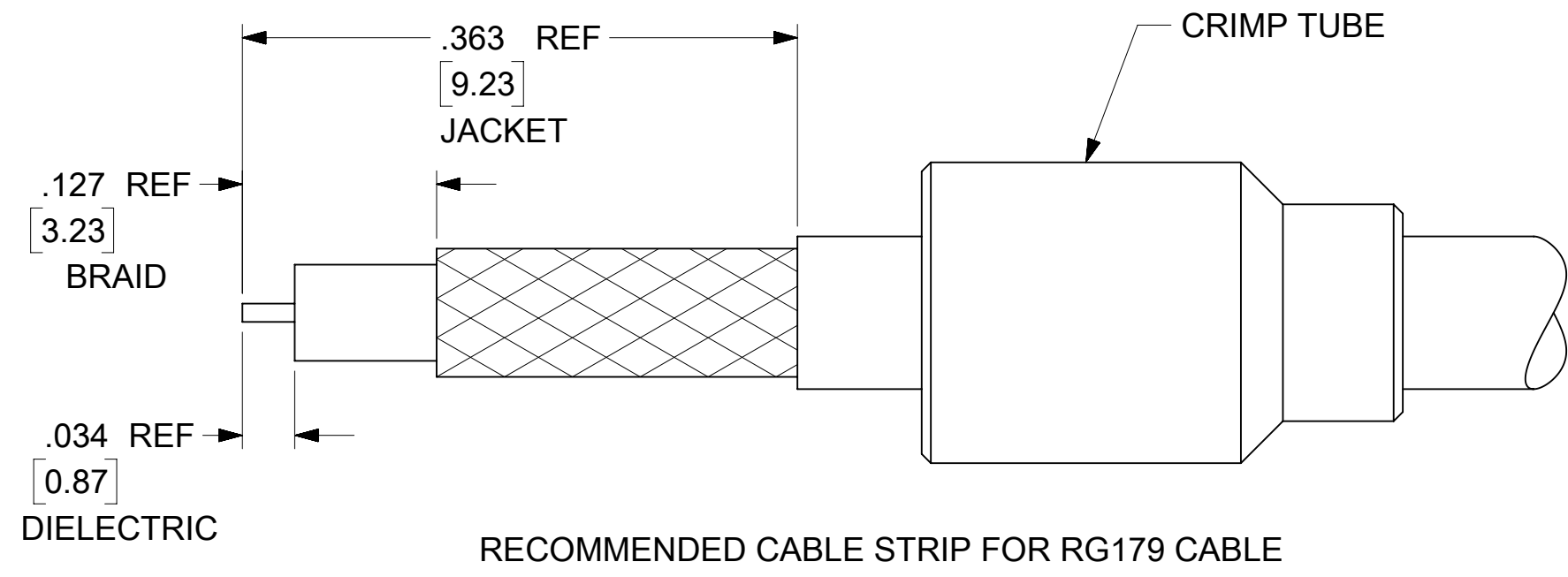
**molex**

MCX PLUG, R/A FOR RG179  
75 OHMS, MCX-PC, EWR-13455

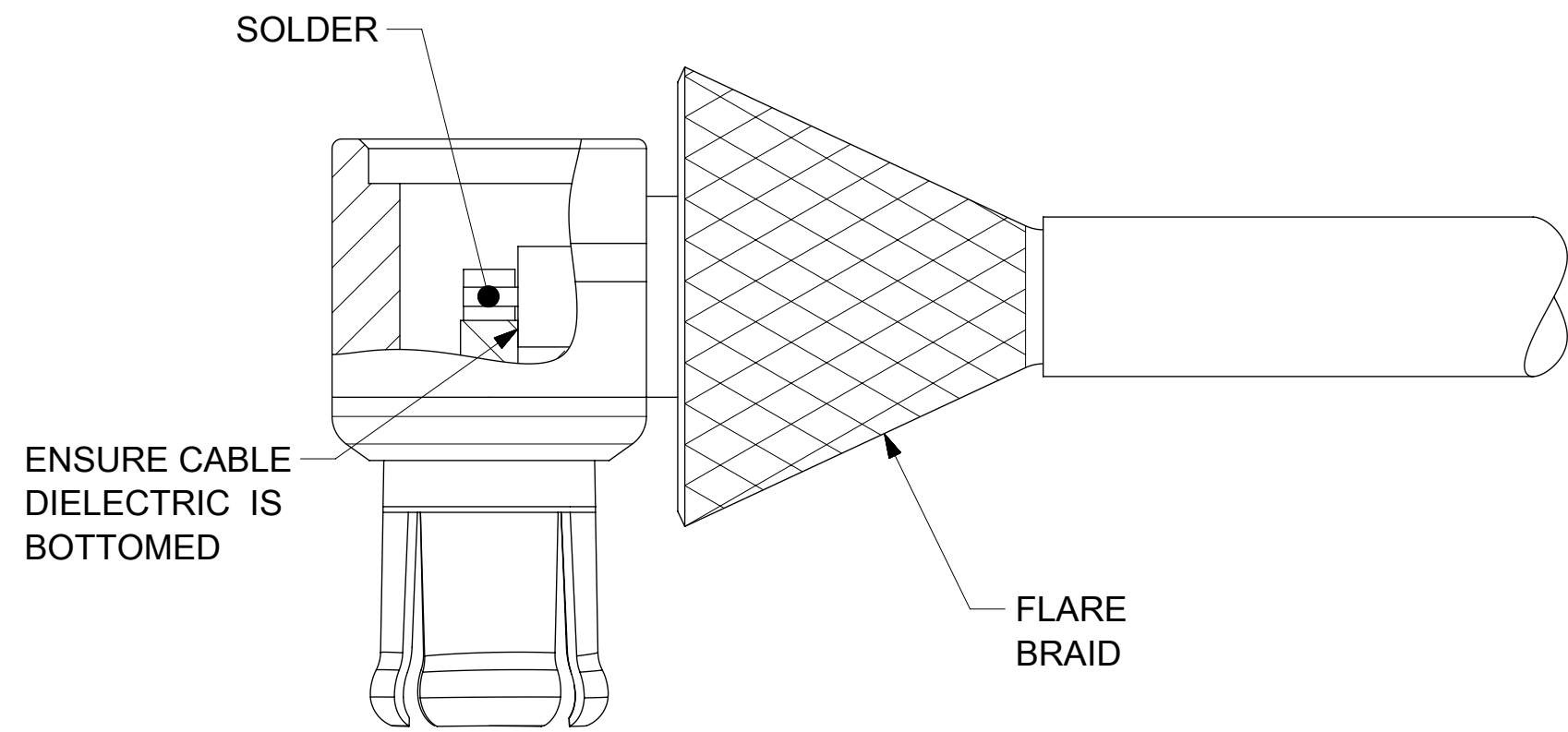
PRODUCT CUSTOMER DRAWING

DOCUMENT NUMBER: **SD-73415-519** DOC TYPE: PSD DOC PART: 001 REVISION: A1

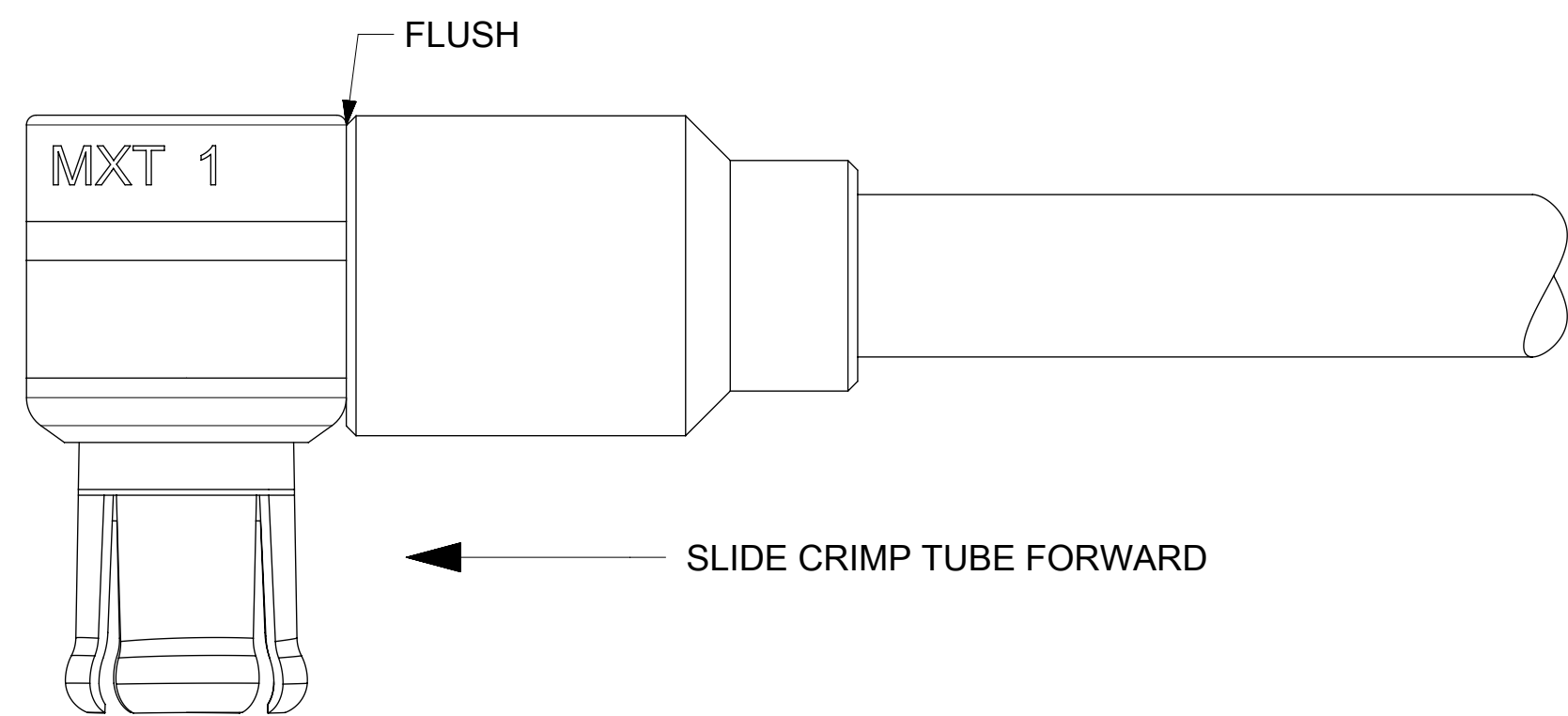
1. SLIDE CRIMP TUBE ONTO CABLE BEFORE CABLE STRIP OPERATIONS.  
NOTE ORIENTATION OF CRIMP TUBE. STRIP CABLE PER DIMENSIONS SHOWN.



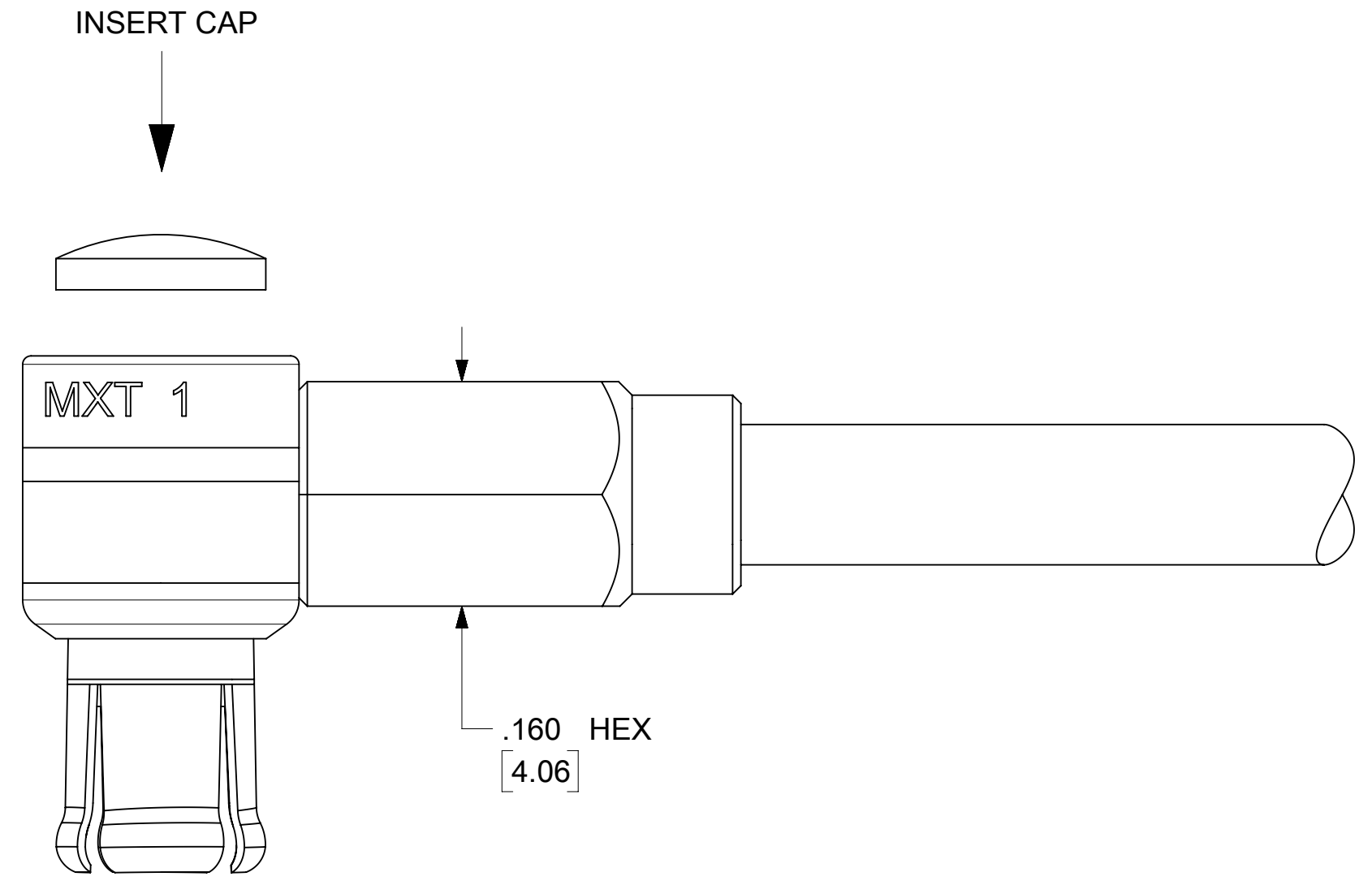
2. FLARE CABLE BRAID. INSERT CABLE INTO CONNECTOR UNTIL CABLE CENTER CONDUCTOR IS INSERTED THROUGH SLOT IN CONTACT AND CABLE DIELECTRIC BOTTOMS AGAINST CONTACT AS SHOWN. SOLDER CABLE CENTER CONDUCTOR TO CONNECTOR CONTACT.



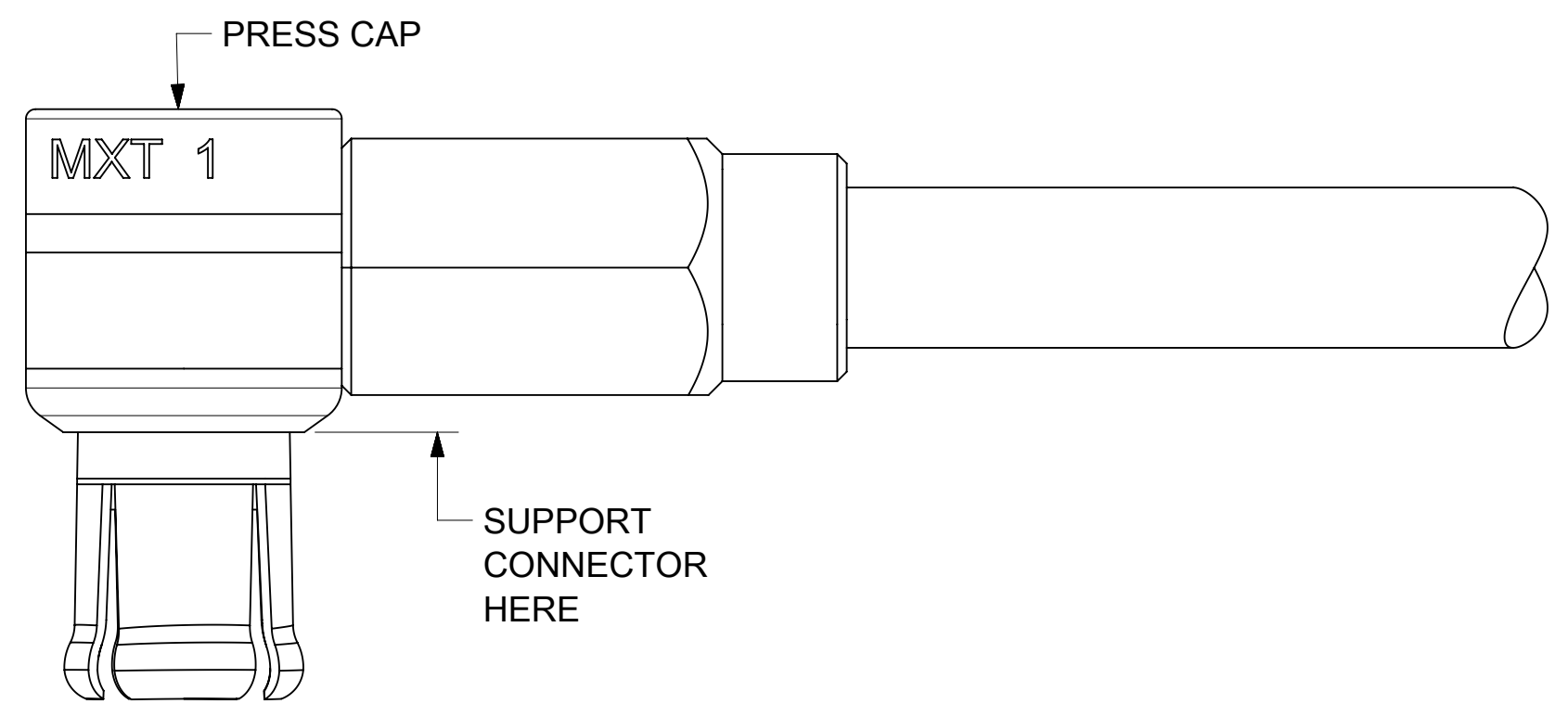
3. SLIDE CRIMP TUBE FORWARD UNTIL FLUSH AGAINST FACE OF BODY AS SHOWN.



4. CRIMP CONNECTOR USING A .160 [4.06] HEX CRIMP TOOL. INSERT CAP INTO OPENING IN REAR OF BODY AS SHOWN. NOTE ORIENTATION OF CAP.



5. SUPPORT CONNECTOR ON SURFACE SHOWN AND PRESS CAP INTO REAR OPENING IN BODY PER AS-89675-507.



SYMBOLS										THIS DRAWING CONTAINS INFORMATION THAT IS PROPRIETARY TO MOLEX ELECTRONIC TECHNOLOGIES, LLC AND SHOULD NOT BE USED WITHOUT WRITTEN PERMISSION														
DIMENSION UNITS					SCALE					CURRENT REV DESC:														
= 0					IN/MM					NTS					EC NO: 628146									
= 0					GENERAL TOLERANCES (UNLESS SPECIFIED)					DRWN: LMEIER					2019/11/20									
= 0										CHK'D: SSSHAH					2019/12/02									
= 0										APPR: AROBERTSON					2019/12/02									
= 0					4 PLACES ±					INITIAL REVISION:					DRWN: TEF					2004/10/27				
= 0					3 PLACES ±					DRWN: TEF					2004/10/27					SD-73415-519				
= 0					2 PLACES ± 0.13 ± 0.01					APPR: JDW					2004/10/27					PSD 001 A1				
= 0					1 PLACE ± 0.25 ±					THIRD ANGLE PROJECTION					DRAWING					SERIES				
= 0					0 PLACES ±					C-SIZE					73415					MATERIAL NUMBER				
= 0					ANGULAR TOL ± 2.0°					C-SIZE					73415					CUSTOMER				
= 0					DRAFT WHERE APPLICABLE MUST REMAIN WITHIN DIMENSIONS					C-SIZE					73415					SHEET NUMBER				
= 0										C-SIZE					73415					2 OF 2				

**molex**

MCX PLUG, R/A FOR RG179  
75 OHMS, MCX-PC, EWR-13455

PRODUCT CUSTOMER DRAWING

DOCUMENT NUMBER	DOC TYPE	DOC PART	REVISION
SD-73415-519	PSD	001	A1
MATERIAL NUMBER	CUSTOMER	SHEET NUMBER	
734155190		2 OF 2	