

# Sealing boots

For toggle or pushbutton switches



## DISTINCTIVE FEATURES

- Prevent dust, sand and water from getting into switches.
- On toggle versions, also prevent ice from blocking lever action
- Compatible with front sealing options (K and X408).
- Available in a wide range of colors.
- When necessary, a sealing ring or washer is supplied with the boot.



## ENVIRONMENTAL SPECIFICATIONS

- Operating temperature :
  - neoprene boots : -20 °C to +50 °C (-4 °F to 122 °F)
  - silicone boots : -40 °C to + 85 °C (-40 °F to +185 °F)



## MATERIALS

- Boot : neoprene or silicone (see comparative advantages below)
- Nut : brass, nickel plated or black

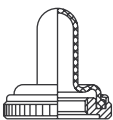
| COMPARATIVE ADVANTAGES | TEMPERATURE RANGE |      | ELASTICITY | MECHANICAL RESISTANCE |
|------------------------|-------------------|------|------------|-----------------------|
|                        | LOW               | HIGH |            |                       |
| Silicone               | ++                | ++   | ++         | -                     |
| Neoprene               | -                 | +    | -          | ++                    |

++ : excellent, + : good, - : poor

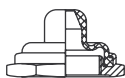
Lack of elasticity impacts the actuating force thus neoprene boots are not advised with maintained positions functions.



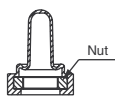
## DIFFERENT TYPES OF BOOTS



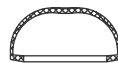
Full-toggle (standard) \*



Half-toggle \*



Two-part (no metal parts accessible) \*



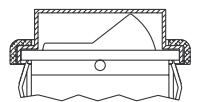
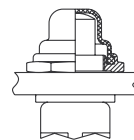
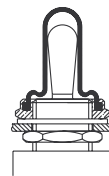
For double sealing \*

\* Color options available

The company reserves the right to change specifications without notice.



## EXAMPLES OF MOUNTING



## ABOUT THIS SERIES

- These sealing boots are designed to fit standard actuators (levers, pushbuttons, ...). Please contact us for specific actuators to confirm compatibility
- Sealing boots are not designed to be used with locking levers (toggle switches)

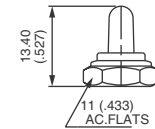
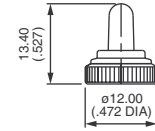
# Sealing boots

For toggle switches

FOR BUSHING Ø 6 X 0.75 (.236 X 0.75)  
55500 SERIES



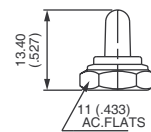
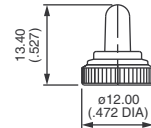
| NUT                   | FULL-TOGGLE SILICONE BOOTS |                        |                        |                        |
|-----------------------|----------------------------|------------------------|------------------------|------------------------|
|                       | Black                      | Red                    | Green                  | White                  |
| Knurled Nickel plated | N32161005<br>(U1341)       | N32162005<br>(U1341-6) | N3216V005<br>(U1341-3) | N3216B005<br>(U1341-7) |
| Knurled Black         | N32161002<br>(U1343)       | -                      | -                      | -                      |
| Hex Nickel plated     | N32121005<br>(U1302)       | N32122005<br>(U1302-6) | N3212V005<br>(U1302-3) | N3212B005<br>(U1302-7) |
| Hex Black             | N32121002<br>(U1304)       | -                      | -                      | -                      |



FOR BUSHING Ø 6.35-40 NS (1/4-40 UNS)  
55600, 5000 AND 11000 SERIES



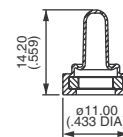
| NUT                   | FULL-TOGGLE SILICONE BOOTS |                        |                        |                        |
|-----------------------|----------------------------|------------------------|------------------------|------------------------|
|                       | Black                      | Red                    | Green                  | White                  |
| Knurled Nickel plated | N33161005<br>(U1331)       | N33162005<br>(U1331-6) | N3316V005<br>(U1331-3) | N3316B005<br>(U1331-7) |
| Knurled Black         | N33161002<br>(U1333)       | -                      | -                      | -                      |
| Hex Nickel plated     | N33121005<br>(U1229)       | N33122005<br>(U1229-6) | N3312V005<br>(U1229-3) | N3312B005<br>(U1229-7) |
| Hex Black             | N33121002<br>(U1231)       | -                      | -                      | -                      |



FOR BUSHING Ø 6.35-40 NS (1/4-40 UNS)  
5000 AND 11000 SERIES



| BOOTS SUPPLIED AS 2 SEPARATE PARTS |                        |                        |                        |  |
|------------------------------------|------------------------|------------------------|------------------------|--|
| NEOPRENE                           | SILICONE               |                        |                        |  |
| Black                              | Red                    | Green                  | White                  |  |
| N33136119<br>(U5149)               | N33137119<br>(U5149-6) | N3313V119<br>(U5149-3) | N3313B119<br>(U5149-7) |  |

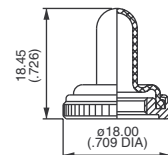


Once the boot is mounted onto the panel, no switch metal part is accessible any more.

FOR BUSHING Ø 10 X 0.75 (.393 X 0.75)  
10600 SERIES



| KNURLED NUT   | FULL-TOGGLE SILICONE BOOTS |                        |                        |                        |
|---------------|----------------------------|------------------------|------------------------|------------------------|
|               | Black                      | Red                    | Green                  | White                  |
| Nickel plated | N34151005<br>(U1612)       | N34152005<br>(U1612-6) | N3415V005<br>(U1612-3) | N3415B005<br>(U1612-7) |
| Black         | N34151002<br>(U1614)       | -                      | -                      | -                      |



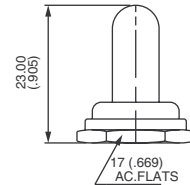
# Sealing boots

For toggle switches

FOR BUSHING Ø 11.9-32 NS (15/32-32 UNS)  
12000, 5000M, 3500 AND 6000 SERIES



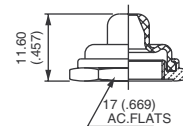
| HEX NUT       | FULL-TOGGLE SILICONE BOOTS |                     |                     |                     |
|---------------|----------------------------|---------------------|---------------------|---------------------|
|               | Black                      | Red                 | Green               | White               |
| Nickel plated | N35111005 (U1031)          | N35112005 (U1031-6) | N3511V005 (U1031-3) | N3511B005 (U1031-7) |
| Black         | N35111002 (U1024)          | -                   | -                   | -                   |



FOR BUSHING Ø 11.9-32 NS (15/32-32 UNS)  
12000, 3500 AND 6000 SERIES



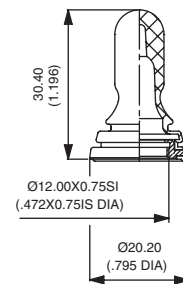
| HEX NUT       | HALF-TOGGLE SILICONE BOOTS |                     |                     |                     |
|---------------|----------------------------|---------------------|---------------------|---------------------|
|               | Black                      | Red                 | Green               | White               |
| Nickel plated | N35111015 (U1600)          | N35112015 (U1600-6) | N3511V015 (U1600-3) | N3511B015 (U1600-7) |
| Black         | N35111012 (U1602)          | -                   | -                   | -                   |



FOR BUSHING Ø12 X 0.75 SI (.472X.075 IS)  
12000, 3500, 3600 AND 600 SERIES



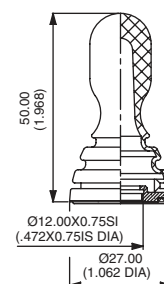
| FULL-TOGGLE BLACK NEOPRENE BOOT |  |
|---------------------------------|--|
| N36346009 (U2252)               |  |



FOR BUSHING Ø12 X 0.75 SI (.472X.075 IS)  
600 SERIES WITH -5 LONG LEVER



| FULL-TOGGLE BOOT  |                   |
|-------------------|-------------------|
| BLACK NEOPRENE    | BLACK SILICONE    |
| N36346209 (U2197) | N36343209 (U3093) |



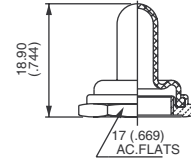
# Sealing boots

For toggle or pushbutton switches

FOR BUSHING Ø12 X 0.75 SI (.472X.075 IS)  
4450, 4650 AND 1600 SERIES



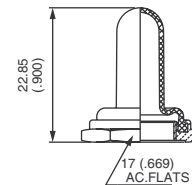
| HEX NUT       | FULL-TOGGLE BLACK NEOPRENE BOOTS |
|---------------|----------------------------------|
| Nickel plated | N36116045 (U09)                  |
| Black         | N36116042 (U223)                 |



FOR BUSHING Ø 12 X 0.75 SI (.472X.075 IS)  
600H, 660, 1000, 1500 AND 3600



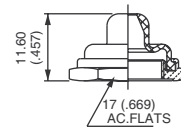
| HEX NUT                          | FULL-TOGGLE SILICONE BOOTS |                     |                     |                     |
|----------------------------------|----------------------------|---------------------|---------------------|---------------------|
|                                  | Black                      | Red                 | Green               | White               |
| Nickel plated                    | N36111005 (U1565)          | N36112005 (U1565-6) | N3611V005 (U1565-3) | N3611B005 (U1565-7) |
| Black                            | N36111002 (U1567)          | -                   | -                   | -                   |
| FULL-TOGGLE BLACK NEOPRENE BOOTS |                            |                     |                     |                     |
| Nickel plated                    | N36116005 (U851)           |                     |                     |                     |
| Black                            | N36116002 (U853)           |                     |                     |                     |



FOR BUSHING Ø 12 X 0.75 SI (.472X.075 IS)  
600H, 660, 1000 AND 3600 SERIES



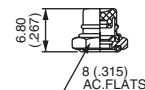
| HEX NUT                          | HALF-TOGGLE SILICONE BOOTS |                     |                     |                     |
|----------------------------------|----------------------------|---------------------|---------------------|---------------------|
|                                  | Black                      | Red                 | Green               | White               |
| Nickel plated                    | N36111015 (U1151)          | N36112015 (U1151-6) | N3611V015 (U1151-3) | N3611B015 (U1151-7) |
| Black                            | N36111012 (U1153)          | -                   | -                   | -                   |
| HALF-TOGGLE BLACK NEOPRENE BOOTS |                            |                     |                     |                     |
| Nickel plated                    | N36116015 (U598)           |                     |                     |                     |
| Black                            | N36116012 (U600)           |                     |                     |                     |



FOR BUSHING Ø 4 X 0.70 (.157 X 0.70)  
9500 SERIES



| HEX NUT       | PUSHBUTTON SILICONE BOOTS |                     |                     |                     |
|---------------|---------------------------|---------------------|---------------------|---------------------|
|               | Black                     | Red                 | Green               | White               |
| Nickel plated | N31221005 (U1829)         | N31222005 (U1829-6) | N3122V005 (U1829-3) | N3122B005 (U1829-7) |
| Black         | N31221002 (U1831)         | -                   | -                   | -                   |



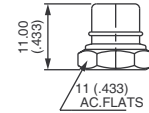
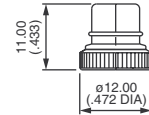
# Sealing boots

For toggle or pushbutton switches

FOR BUSHING Ø 6.35-40 NS (1/4-40 UNS)  
18000, 9000 AND 13000 SERIES



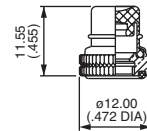
| NUT                      | PUSHBUTTON SILICONE BOOTS |                        |                        |                        |
|--------------------------|---------------------------|------------------------|------------------------|------------------------|
|                          | Black                     | Red                    | Green                  | White                  |
| Knurled<br>Nickel plated | N33261005<br>(U1401)      | N33262005<br>(U1401-6) | N3326V005<br>(U1401-3) | N3326B005<br>(U1401-7) |
| Knurled<br>Black         | N33261002<br>(U1403)      | -                      | -                      | -                      |
| Hex<br>Nickel plated     | N33221005<br>(U1318)      | N33222005<br>(U1318-6) | N3322V005<br>(U1318-3) | N3322B005<br>(U1318-7) |
| Hex<br>Black             | N33221002<br>(U1320)      | -                      | -                      | -                      |



FOR BUSHING Ø 6.35-40 NS (1/4-40 UNS)  
8000 SERIES



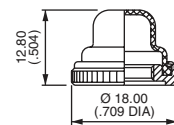
| KNURLED NUT   | PUSHBUTTON SILICONE BOOTS |                        |                        |                        |
|---------------|---------------------------|------------------------|------------------------|------------------------|
|               | Black                     | Red                    | Green                  | White                  |
| Nickel plated | N33261125<br>(U4301)      | N33262125<br>(U4301-6) | N3326V125<br>(U4301-3) | N3326B125<br>(U4301-7) |



FOR BUSHING Ø 10 X 0.75 (.393 X 0.75)  
10400 SERIES



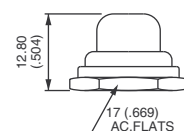
| KNURLED NUT   | PUSHBUTTON SILICONE BOOTS |                        |                        |                        |
|---------------|---------------------------|------------------------|------------------------|------------------------|
|               | Black                     | Red                    | Green                  | White                  |
| Nickel plated | N34251005<br>(U1624)      | N34252005<br>(U1624-6) | N3425V005<br>(U1624-3) | N3425B005<br>(U1624-7) |
| Black         | N34251002<br>(U1626)      | -                      | -                      | -                      |



FOR BUSHING Ø 11.9-32 NS (15/32-32 UNS)  
13000X778, 13000X768 AND 8000-6X934 SERIES



| HEX NUT       | PUSHBUTTON SILICONE BOOTS |                       |                       |                       |
|---------------|---------------------------|-----------------------|-----------------------|-----------------------|
|               | Black                     | Red                   | Green                 | White                 |
| Nickel plated | N35211005<br>(U589)       | N35212005<br>(U589-6) | N3521V005<br>(U589-3) | N3521B005<br>(U589-7) |
| Black         | N35211002<br>(U590)       | -                     | -                     | -                     |



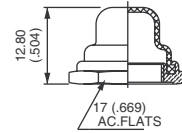
# Sealing boots

For toggle or pushbutton switches

FOR BUSHING Ø 12 X 0.75 SI (.472X.075 IS)  
1200, 4700 AND 4800 SERIES



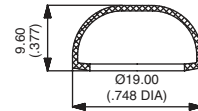
| HEX NUT                         | PUSHBUTTON SILICONE BOOTS |                     |                     |                     |
|---------------------------------|---------------------------|---------------------|---------------------|---------------------|
|                                 | Black                     | Red                 | Green               | White               |
| Nickel plated                   | N36211005 (U1654)         | N36212005 (U1654-6) | N3621V005 (U1654-3) | N3621B005 (U1654-7) |
| Black                           | N36211002 (U1656)         | -                   | -                   | -                   |
| PUSHBUTTON BLACK NEOPRENE BOOTS |                           |                     |                     |                     |
| Nickel plated                   | N36216005 (U31)           |                     |                     |                     |
| Black                           | N36216002 (U225)          |                     |                     |                     |
| Chrome plated                   | N36216001 (U224)          |                     |                     |                     |



FOR DOUBLE SEALING ON  
IC, IHS, IL, IM, IP AND IB-IS SERIES



| SILICONE BOOTS |         |
|----------------|---------|
| Transparent    | U5125   |
| Blue           | U5125-1 |
| Black          | U5125-2 |
| Red            | U5125-6 |

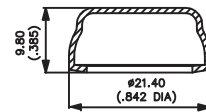


Operating temperature : -40 °C to +85 °C (-40 °F to +185 °F)  
The flat seal or O-Ring supplied with the switch should not be used with this boot.

FOR DOUBLE SEALING ON IR SERIES



| SILICONE BOOTS |         |
|----------------|---------|
| Transparent    | U7125   |
| Blue           | U7125-1 |
| Black          | U7125-2 |
| Red            | U7125-6 |

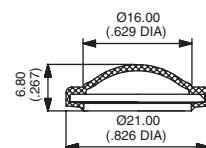


Operating temperature : -40 °C to +85 °C (-40 °F to +185 °F)  
The flat seal or O-Ring supplied with the switch should not be used with this boot.

FOR DOUBLE SEALING ON IA SERIES



| SILICONE BOOTS |       |
|----------------|-------|
| Black          | U6602 |
| Green          | U6603 |
| Yellow         | U6605 |
| Red            | U6606 |



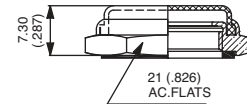
# Sealing boots

For toggle or pushbutton switches

## FOR IZ SERIES



| HEX NUT       | TRANSPARENT SILICONE BOOTS |
|---------------|----------------------------|
| Nickel plated | N3822D005                  |
| Black         | N3822D002                  |

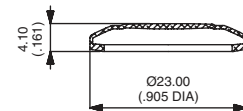


Panel thickness :  
For models IZP and IZN, panel thickness should be 4 mm (.157).  
No restriction for IZM models.

## FOR AV SERIES (MODELS WITH Ø 19 MM BUSHING)



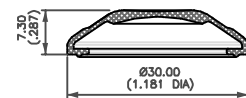
| SILICONE BOOTS |         |
|----------------|---------|
| Black          | U2187-2 |
| Green          | U2187-3 |
| Grey           | U2187-4 |
| Yellow         | U2187-5 |
| Red            | U2187-6 |
| White          | U2187-7 |
| Transparent    | U2187-8 |



## FOR FP 24 MM SERIES



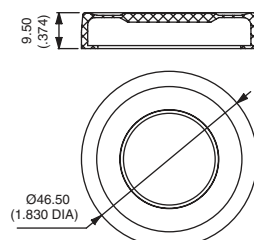
| SILICONE BOOTS |        |
|----------------|--------|
| Black          | FP0292 |
| Red            | FP0296 |
| Transparent    | FP0298 |



## FOR LPI SERIES



| SILICONE BOOTS |       |
|----------------|-------|
| Black          | U3082 |
| Transparent    | U3088 |



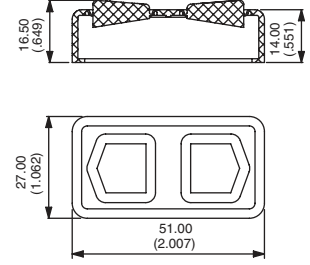
# Sealing boots

For toggle or pushbutton switches

FOR KG SERIES



|                     |
|---------------------|
| BLACK SILICONE BOOT |
| U3084               |



Also available with pad-printed symbols : on request.