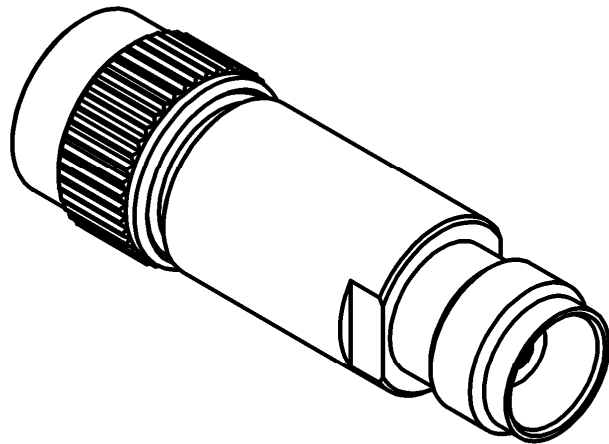
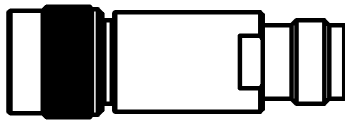
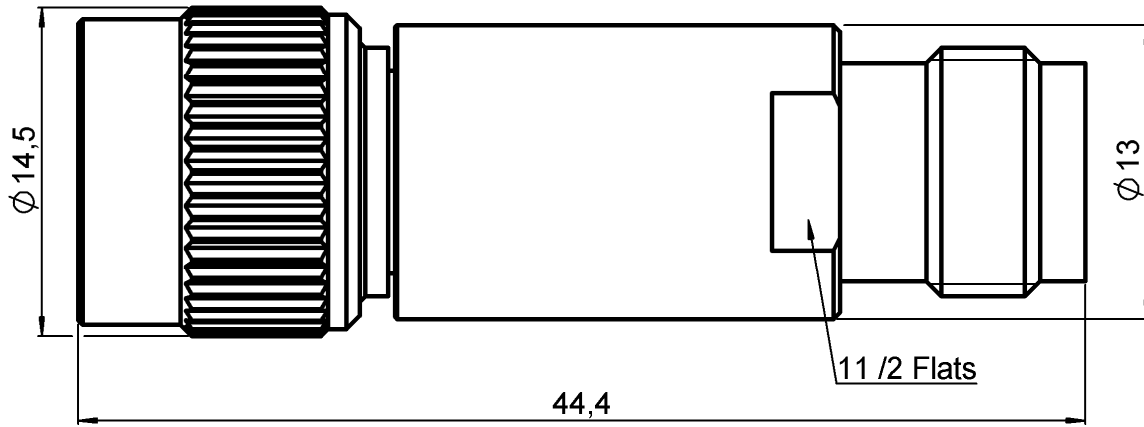


**TNC ATTENUATOR**  
**11 DB 12.4 GHZ 2W**

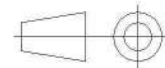
**R414.511.000**

Series : ATTENUATOR



SCALE 1/1

All dimensions are in mm.



| COMPONENTS            | MATERIALS        | PLATING(μm)                |
|-----------------------|------------------|----------------------------|
| BODY                  | BRASS            | NICKEL 5                   |
| MALE CENTER CONTACT   | BERYLLIUM COPPER | GOLD 2.5 OVER NICKEL 1     |
| FEMALE CENTER CONTACT | BERYLLIUM COPPER | GOLD 2.54 OVER NICKEL 1.27 |
| OUTER CONTACT         |                  |                            |
| INSULATOR             | PTFE             |                            |
| GASKET                | SILICONE RUBBER  |                            |
| SUBSTRATE             | ALUMINA          |                            |
| RESISTOR              | THIN FILM        |                            |
| OTHERS PARTS          |                  |                            |

Issue : 0836 B

In the effort to improve our products, we reserve the right to make changes judged to be necessary.



**TNC ATTENUATOR**  
**11 DB 12.4 GHZ 2W**

**R414.511.000**  
Series : ATTENUATOR

**ELECTRICAL CHARACTERISTICS**

|                 |        |       |          |
|-----------------|--------|-------|----------|
| Frequency (GHz) | DC - 4 | 4 - 8 | 8 - 12.4 |
| V.S.W.R (≤)     | 1.20   | 1.25  | 1.30     |
| Deviation(±dB)  | 0.30   | 0.50  | 0.70     |

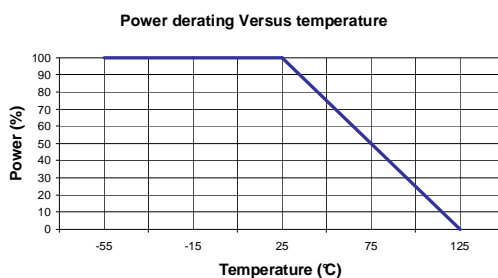
|                              |           |                       |
|------------------------------|-----------|-----------------------|
| Operating Frequency Range    | DC - 12.4 | GHz                   |
| Impedance                    | 50        | Ω                     |
| Nominal Attenuation          | 11        | dB                    |
| Peak power at 25°C (1μs, 1%) | 100       | W                     |
| Average power at 25°C        | 2         | W (Free Air Cooled)   |
|                              |           | W (Conduction Cooled) |

**MECHANICAL CHARACTERISTICS**

|            |           |             |             |
|------------|-----------|-------------|-------------|
| Connectors | TNC       | Male Female | MIL-C 39012 |
| Weight     | 29,9010 g |             |             |

**ENVIRONMENTAL CHARACTERISTICS**

|                             |              |
|-----------------------------|--------------|
| Operating temperature range | -55 /+125 °C |
| Storage temperature range   | -55 /+125 °C |



**SPECIFICATION**

**OTHER CHARACTERISTICS**

Issue : 0836 B

In the effort to improve our products, we reserve the right to make changes judged to be necessary.

