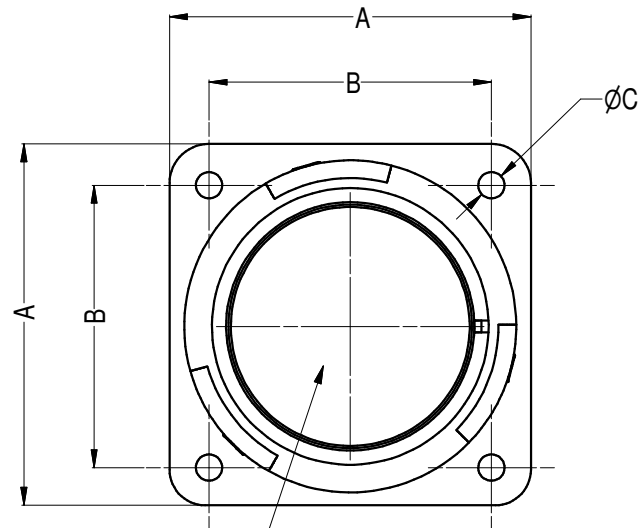
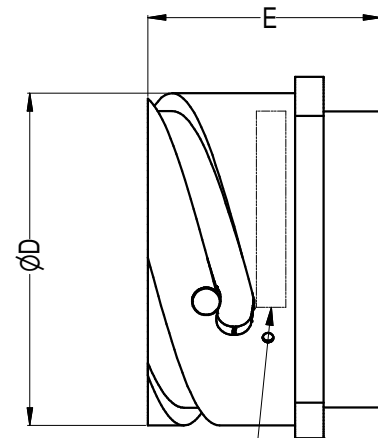


ISOMETRIC VIEW



CONTACT HOLES NOT SHOWN,
FOR No OF CONTACTS REFER TO TABLE



Amphenol LOGO & PART No



Parts No List, Dimensions in mm								
ITEM	CATALOGUE P/	No OF CONTACT	A	B	DIA C	DIA D	E	DIA F
1	MP- 4102- 13P	13	38.0	29.4	3.23	34.2	34.5	29.0
2	MP- 4102- 19P	19	41.0	31.8	3.23	37.4	34.5	32.2
3	MP- 4102- 25P	25	44.5	34.9	3.73	40.9	35.7	35.3
4	MP- 4102- 37P	37	50.8	39.7	3.73	46.7	35.7	41.4
5	MP- 4102- 54P	54	57.0	44.5	4.30	53.4	38.5	47.8
6	MP- 4102- 85P	85	69.8	55.5	4.30	65.5	38.5	59.0
7	MP- 4102- 150P	150	69.8	55.5	4.30	65.5	38.5	59.0

4	CHANGE FINISH TO BLACK COATING	T.N	17/ 02/ 2006	8478
3	CHANGE FINISH NOTES ADD STAINLESS STEEL WEAR PINS	T.N	09/ 09/ 2005	8422
2	CHANGE FINISH FROM PLATING TO COATING	L.V	16/ 04/ 2004	8277
1	CHANGE DIM 56.50 TO 55.50 ADD NOTE (ZONE D3)	T.N	18/ 11/ 2003	8236
0	FIRST ISSUE	T.N	21/ 08/ 2003	----
REV.	CHANGE DETAILS	BY	DATE	CHG No

CUSTOMER DRAWING

NOTES:

1. MATERIAL AND FINISH: DIE CAST ALUMINUM ALLOY, BLACK FINISH
2. SUPPLIED WITH GOLD PLATED CRIMP PIN CONTACTS

UNLESS OTHERWISE SPECIFIED TOLERANCE TO BE		THIS DOCUMENT IS THE PROPERTY OF AMPHENOL AUSTRALIA PTY. LTD. NO PART THEREOF MAY BE REPRODUCED AND USED WITHOUT THE PRIOR WRITTEN CONSENT OF THE OWNER			
LINEAR	ANGULAR	CAD FILE: 55010250000214	DRN: T.N	DATE: 21/ 08/ 2003	TITLE: PANEL RECP PLUG WITH PIN CONTACTS
X ±	X' ± 1	MATL: SEE NOTE 1	CKD: P.M	DATE: 20/ 02/ 06	 Amphenol Australia Pty Ltd, 2 Freeways Blvd, Keysborough, Vic3173
XX ±	X'X' ± 30'	FINISH: SEE NOTE 1	APP'D: P.M	DATE: 20/ 02/ 06	
XXX ±	X'X'X' ± 15'	DIMENSIONS IN MILLIMETRES		SCALE:	PART No: SEE TABLE
BREAK ALL SHARP EDGES AND REMOVE ALL BURRS		THIRD ANGLE PROJECTION		SIZE: A4	
DO NOT SCALE		DRAWING NO: 55010250- 000- 2		SHEET: 2/ 2	