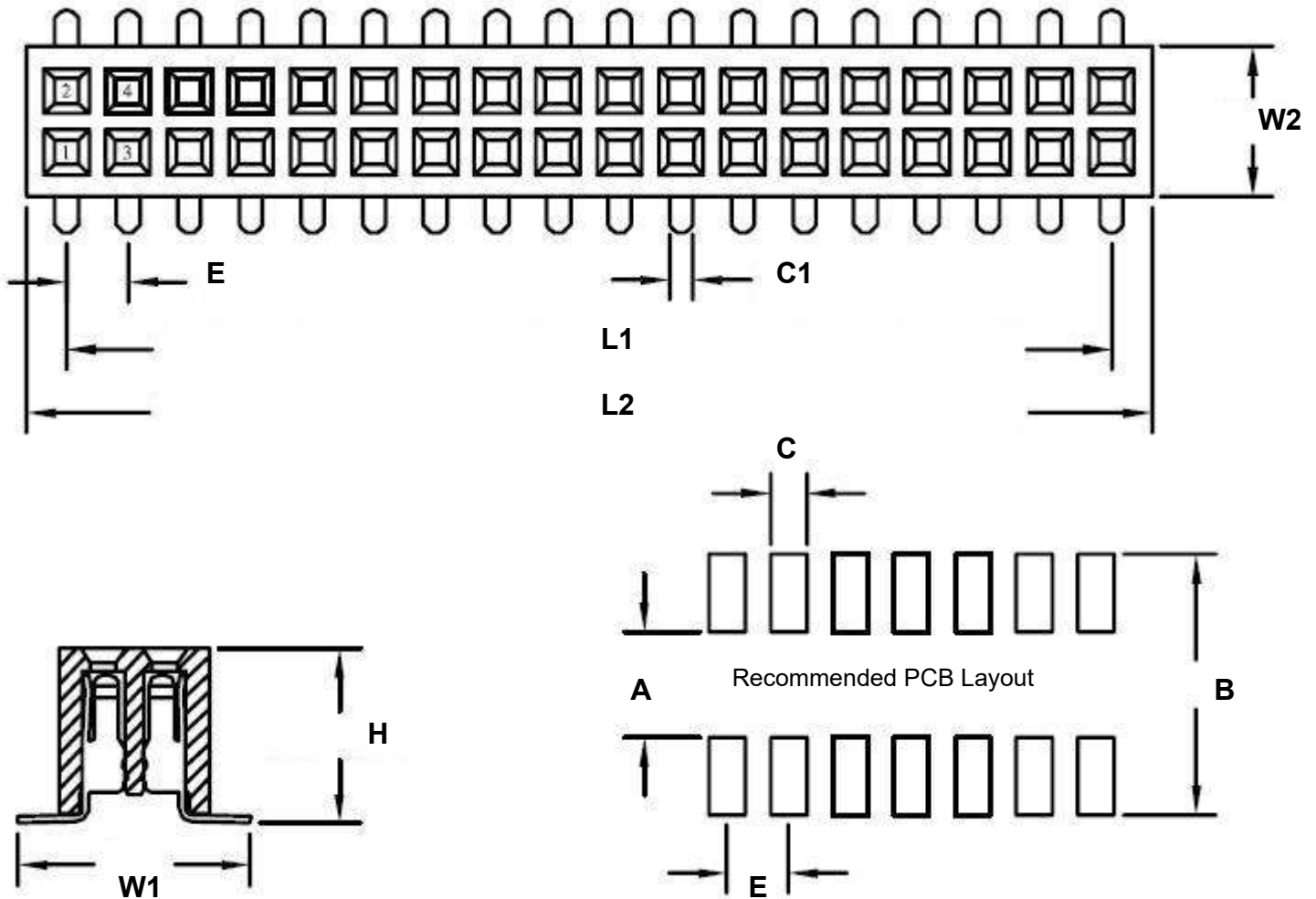


## 0.1" 40 pin Vertical Female Header Surface Mount Gold

REF.	DIMENSIONS					
	mm			inches		
	MIN.	TYP.	MAX.	MIN.	TYP.	MAX.
A		3.80				
B		7.60				
C		1.02				
C1		0.68				
E		2.54			0.100	
H		5.20				
L1		48.26			1.900	
L2		50.80			2.000	
W1		6.60				
W2		5.00				



## **SPECIFICATIONS**

Plastic body construction: PA6T plastic (320°C melting point)

Pin construction: Gold plated (brass pin, with 1um gold over 50um nickel)

Operating temperature range: -40°C to +130°C

Reflow maximum temperature: +260°C